



EXA'lence

Breakthrough Technology

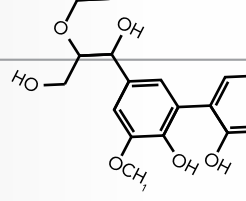


Intrinsically Hydrophilic.

EXA'lence™

Vinyl PolyEther Silicone (VPES™)
Impression Material



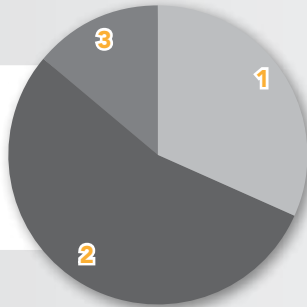


A New Category of Impression Material VPES™ - A Breakthrough Technology

Key Concern in Taking Consistent and Accurate Impressions

#1 Concern When Taking an Impression Involving Sub-gingival Margins¹

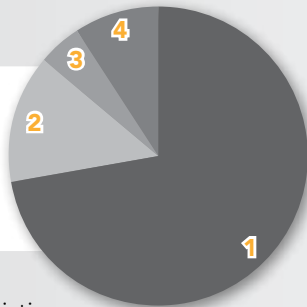
- 1) Controlling bleeding - 32%
- 2) Creating and maintaining space - 55%
- 3) Gingival trauma - 14%



Solution: The inherent hydrophilicity and wettability of VPES will enable you to capture the finer details of the tooth surface, even in a moist environment.

#1 Need for Improvement in Current Impression Materials¹

- 1) Predictably flows sub-gingivally, minimizing voids and bubbles - 73%
- 2) Extended work times/faster setting times - 14%
- 3) Operator controlled work time/set time - 5%
- 4) Taste - 9%



Solution: The combination of intrinsic hydrophilicity and excellent flow characteristics allow EXA'lence™ to flow deep into the sulcus to capture detail and clear, crisp margins.

VPES Vinyl PolyEther Silicone

Problems and Solutions – Why VPES?

The rationale for the development of our new VPES material, EXA'lence, was simple and clear: to take you to a new level of distinctively predictable impressions.

A Whole New Chemistry

EXA'lence combines the best features of both VPS and PolyEther, bringing elasticity, high tear strength, high hydrophilicity and excellent flow.

VPS

- 1) Variability in flow and thixotropic characteristics
- 2) All VPS materials rely on surfactants for wettability
- 3) Not intrinsically hydrophilic and does not always perform well in moisture - resulting in possible voids and loss of detail

PolyEther

- 1) Has low tear strength
- 2) Poor taste
- 3) Need to use mixing machine or hand mix

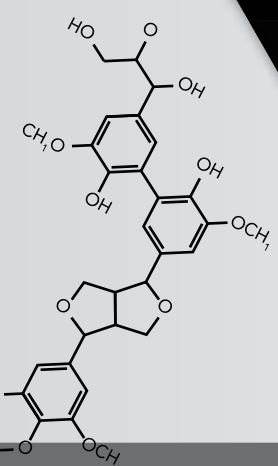
VPES

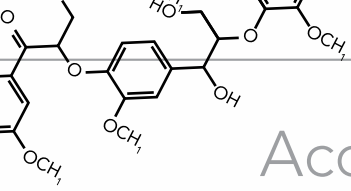
- 1) Intrinsically hydrophilic without surfactants
- 2) Handling of VPS with the detail of Polyether
- 3) High tear strength with flexibility to get you in and out of tight places under unpredictable conditions
- 4) Predictable flow subgingivally minimizes voids and bubbles
- 5) Mild, minty taste

RESULT: Minimizes retakes, fewer adjustments to margins and ensures better fitting crowns



A world leader in dental technology.





Accurate & Detailed Reproduction in Any Environment

EXA'lence™ Light Body Hydrophilic



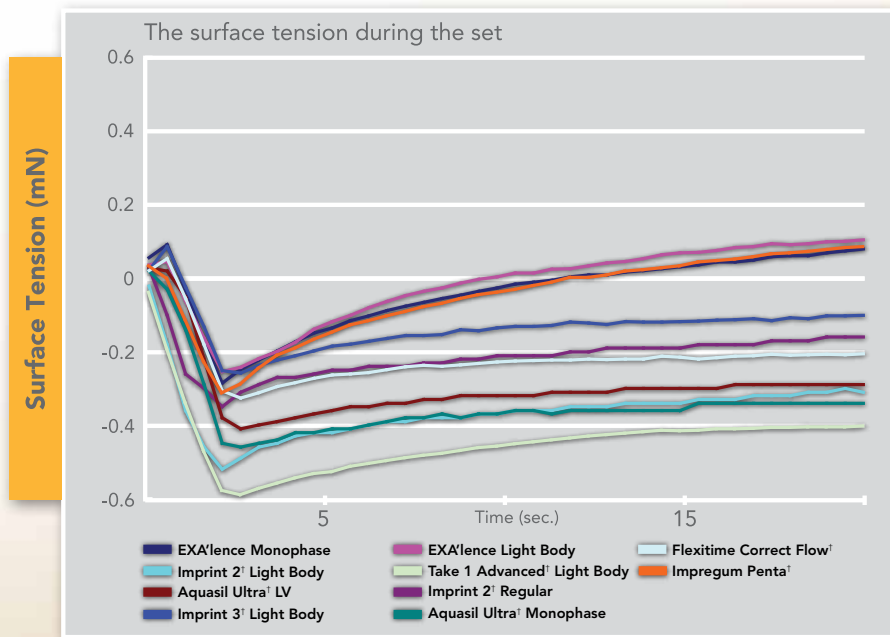
In traditional VPS materials, a surfactant is added that makes a hydrophobic material act hydrophilic. The surfactant actually leaches out when in contact with moisture, which may cause poor flow, voids or bubbles.

In our new VPES™ material, hydrophilicity occurs during the material set time, which captures all the fine detail.

Traditional VPS Materials Hydrophobic



Surface Tension*



Hydrophilicity is evaluated by measuring the surface tension between the mixing material, while the material is setting and while in contact with water. As the material becomes wet, the surface tension becomes lower. EXA'lence starts wet and stays wet during the most important part of the procedure - while it is being syringed into the sulcus.

Colors (In Fast or Regular Set)

- Extra Light Body
- Light Body
- Medium/Monophase Body
- Heavy Body
- Heavy Body Rigid

* Test method followed ISO34. Testing data on file. • ¹ Survey results courtesy of Focused Evolution. • [†] Not a registered trademark of GC America Inc.



Predictable Fit with Minimal or No Adjustments

Flow Test*

When margins are below the gingiva, EXA'lence™ provides superior flow.



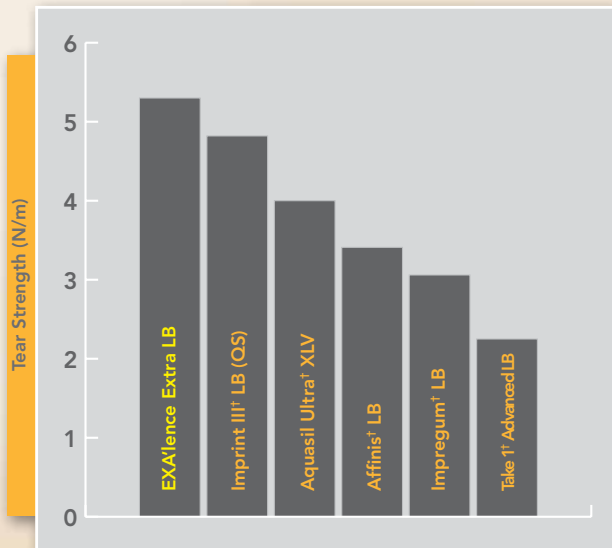
EXA'lence provided better flow, better handling, and better crown margins. The margin integrity was distinctly superior in a side-by-side comparison to Aquasil[†] with B4.

— Dr. Lawrence Kolar
Chicago, IL

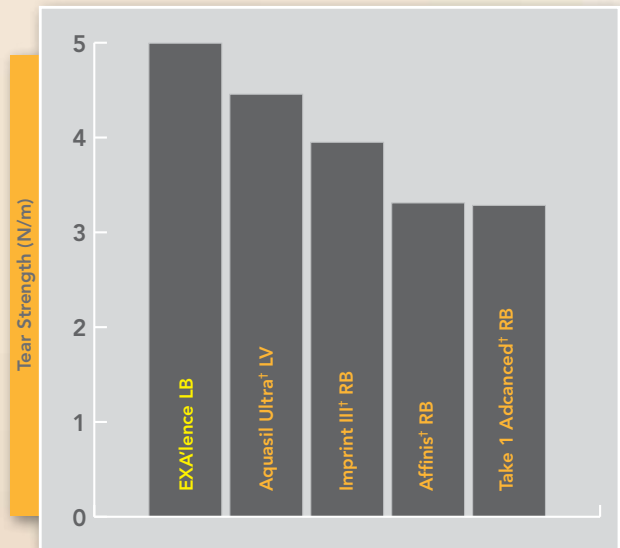
I have been loving the new impression material... I use it on the difficult isolation areas because I know I'll get an accurate impression.

— Dr. Gregory Gillespie, Vancouver, WA

Tear Strength of Extra Light Body^{2*}



Tear Strength of Light Body^{2*}



VPES™ provides superior elasticity with a high degree of toughness to resist tearing with no distortion.

² "Tear Strength of new elastometric impression materials" by D. NATHANSON, Y. TAKAHAMA, R. LHERAULT, and M. ATTAR, BOSTON UNIVERSITY, RES ISSUE 88 (Special Issue B), 039, 2009

Clinically Proven to be the Best Choice



For Your Practice

For dentists and dental teams that are on the path to clinical distinction, EXA'lence™ is a premium impression material that you can use in your practice that provides your solution to the challenges of producing a perfect impression. EXA'lence possesses high elasticity and tear strength, combined with constant hydrophilicity and exceptional flow – the result being one of the most accurate impressions obtainable in the market today. EXA'lence is predictable in an unpredictable environment.



“I have been very impressed with the handling of this material. The detail in the occlusal surfaces and in the crevicular area appears clinically to be excellent. Our laboratory restorations have been outstanding and without defect. I would say this material has the potential to change the market by advancing the science of dental impression materials.”

— **Dr. Richard Brown**, Tulsa, OK

For Your Lab

For labs and lab technicians, EXA'lence provides an incredible level of detail that virtually eliminates retakes and provides an optimal fitting restoration. Because EXA'lence is predictably hydrophilic and provides exceptional surface tension, a master model's level of detail is more easily obtained. Every aspect of EXA'lence's unique chemistry is designed to make it the ideal material for all your lab needs.

“EXA'lence has much sharper detail than Aquasil Ultra. The difference was quite noticeable.”

— **Ed Larson**, Ideal Dental Lab, Chicago, IL

“This material looks like a winner. It was easier to use than Polyether.”

— **Dr. Brian Gagaliardi**, Canandaigua, NY



Photos courtesy of James Pavlatos, DDS

A new impression material from one of the world's leaders in dental technology.

Product Codes & Ordering Information



FAST SET

ITEM #	DESCRIPTION
137902	Intro Kit Fast Set
137014	Fast Set Heavy 48mL Refill
137104	Fast Set Heavy Rigid 48mL Refill
137204	Fast Set Extra Light 48mL Refill
137304	Fast Set Light 48mL Refill
137404	Fast Set Monophase 48mL Refill
137700	Fast Set Heavy 48mL Bulk Package
137701	Fast Set Heavy Rigid Bulk Package
137702	Fast Set Extra Light 48mL Bulk Package
137703	Fast Set Light 48mL Bulk Package
137704	Fast Set Monophase 48mL Bulk Package
137710	Fast Set Heavy 48mL Bulk w/tips
137711	Fast Set Heavy Rigid 48mL Bulk w/tips
137712	Fast Set Extra Light 48mL Bulk w/tips
137713	Fast Set Light 48mL Bulk w/tips
137714	Fast Set Monophase 48mL Bulk w/tips
137175	Fast Set Heavy 75mL Refill
137370	Fast Set Heavy 370mL Standard Package
137470	Fast Set Heavy 370mL Refill
137519	Fast Set Monophase 370mL Standard Package
137570	Fast Set Monophase 370mL Refill
137864	Fast Set Heavy 370mL Clinic Package
137865	Fast Set Monophase 370mL Clinic Package

REGULAR SET

ITEM #	DESCRIPTION
137402	Intro Kit Regular Set
137004	Regular Set Heavy 48mL Refill
137114	Regular Set Heavy Rigid 48mL Refill
137224	Regular Set Extra Light 48mL Refill
137334	Regular Set Light 48mL Refill
137444	Regular Set Monophase 48mL Refill
137669	Regular Set Heavy Rigid 48mL Bulk Package
137705	Regular Set Heavy 48mL Bulk Package
137707	Regular Set Extra Light 48mL Bulk Package
137708	Regular Set Light 48mL Bulk Package
137709	Regular Set Monophase 48mL Bulk Package
137715	Regular Set Heavy 48mL Bulk w/tips
137716	Regular Set Heavy Rigid 48mL Bulk w/tips
137717	Regular Set Extra Light 48mL Bulk w/tips
137718	Regular Set Light 48mL Bulk w/tips
137719	Regular Set Monophase 48mL Bulk w/tips
137375	Regular Set Heavy 75mL Refill
137170	Regular Set Monophase 370mL Standard Package
137270	Regular Set Heavy 370mL Standard
137862	Regular Set Heavy 370mL Clinic Package
137863	Regular Set Monophase 370mL Clinic Package
137870	Regular Set Heavy 370mL Refill
137970	Regular Set Monophase 370mL Refill

ACCESSORIES

ITEM #	DESCRIPTION
153248	Aqua Mixing Tips (48)
159048	Yellow Mixing Tips (48)
150300	Intraoral Yellow Tips (100)
150004	Dynamic Mixing Tips (50)
150005	370mL Bayonet Locking Rings (5)

PUTTY

ITEM #	DESCRIPTION
137405	Putty Clinic Package
137805	Putty Standard Package

Putty Clinic Packages contain: (5) 278mL Base, (5) 278mL Catalyst and (10) Scoops.
Putty Standard Packages contain: (1) 278mL Base, (1) 278mL Catalyst and (2) Scoops.

Intro Kits contain: (2) 48mL Heavy Body Cartridges, (1) 48mL Extra Light Body Cartridges, (1) 48mL Light Body Cartridges, (6) Aqua Mixing Tips, (6) Yellow Mixing Tips and (6) Intraoral Tips.
48mL Refills contain: (4) 48mL Cartridges and (12) Mixing Tips. **48mL Bulk Packages contain:** (32) 48mL Cartridges.
48mL Bulk Packages w/tips contain: (32) 48mL Cartridges and (96) Mixing Tips.
75mL Refills contain: (2) 75mL Cartridges and (9) Mixing Tips.
370mL Standard Packages contain: (1) 370mL Cartridge, (1) Locking Ring and (10) Dynamic Mixing Tips.
370mL Refills contain: (2) 370mL Cartridges. **370mL Clinic Packages contain:** (6) 370mL Cartridges.

Polysulfide
First Elastomeric
Impression Material

C-Silicones
Snap Set, Elasticity

Polyether
Hydrophilicity

A-Silicones (VPS)
Dimensional Accuracy



**A NEW
GENERATION
IS HERE!**

SKU #601002
800.323.7063

www.gcamerica.com
www.gcamerica.com/training
© 2011 GC America Inc.

