

From the World's Leading Dental Cement Company:

Easier.

Faster.

Better.

G-CEM™
Self-Adhesive
Resin Luting Cement



G-CEM

The Right Mix for Long-Lasting Restorations

Easy to use ... strong ... versatile

With G-CEM™ Self-Adhesive Resin Cements, you can simplify your practice with advanced formulations and your choice of application process. G-CEM's unparalleled self-adhesive properties seal and protect the tooth while eliminating sensitivity. G-CEM allows you to quickly and efficiently handle a variety of restorations with far better results — generating more satisfied patients in the process.

With G-CEM's advanced formulations you'll experience:

- **Easy-to-Use Versatility** – One-step application that seats quickly and cleans up easily makes it ideal for crowns, bridges, inlays, onlays and endodontic posts. Available in capsules and now easier-to-use automix deliveries
- **No Risk of Post-op Sensitivity** – A unique hydrophilic chemistry provides a strong seal to all tooth surfaces for superb patient comfort
- **Powerful Adhesive Strength** – Chemical and micromechanical bonding to enamel, dentin, and restoration surface, producing enormous bond strength with a fast set time and reliable results
- **High Aesthetic Quality and Color Stability** – Low water uptake and reduced chance of stain uptake for better color stability and resistance to external stains
- **Strong Dual-Cure Chemistry** – A no-compromise result with excellent adhesion that stays in place permanently whether light-cured or left to self-cure
- **Durability and Dimensional Stability** – No HEMA and the lowest linear expansion of any self-adhesive resin cement
- **Maximum Fluoride Release** – The highest fluoride release capabilities of any self-adhesive resin cement

**Bonds to the tooth structure
as well as it does to the
restoration surface**



A world leader in dental cement technology.

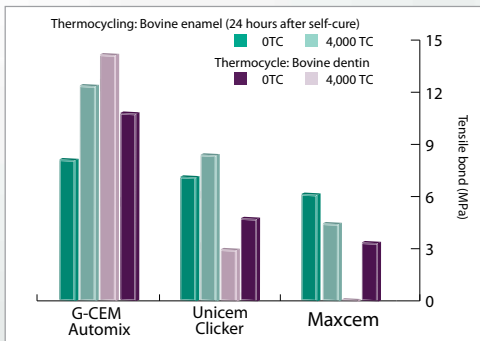
An Innovation in Restorations: Bi-layer Bonding.

Bond strengths to the restoration are as strong as to the tooth structure.

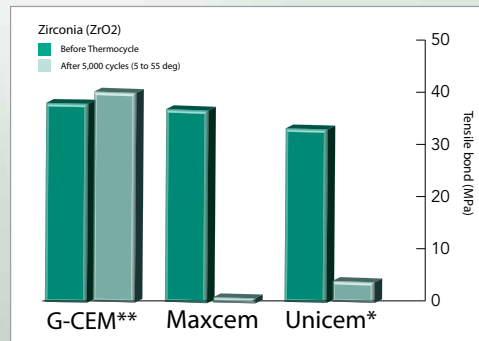
With G-CEM™ Self-Adhesive Resin Cement, whether light-cured or left to self-cure, there is no compromise in adhesion strength to dentin, enamel or the restoration. The strength of the bond is also evident in thermocycling tests, with G-CEM's bond strength outperforming both the RelyX™ Unicem Clicker and Maxcem™ before and after thermocycling†.

G-CEM is the only self-adhesive resin cement that actually improves bond strengths to the dentin, enamel and Zirconia restoration after thermocycling.

Enamel & Dentin Thermocycling†

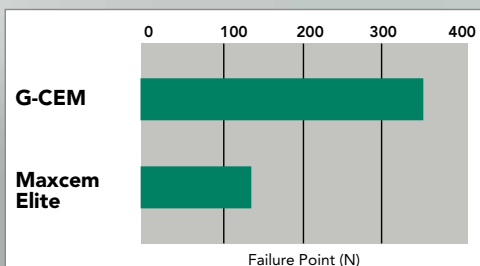


Restoration Thermocycling†

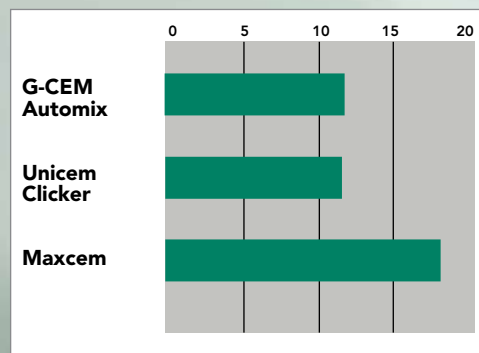


With this strong, resilient bond, G-CEM Automix seals and protects the tooth while eliminating post-op sensitivity — and does so with the lowest film thickness of any self-adhesive resin cement.

Crown Retention to Tooth Structure†



Film Thickness [µm]†



*RelyX™ and Maxcem™ are not registered trademarks of GC America Inc.





Applies Fast — Then Lasts and Lasts

G-CEM™ comes in two delivery options, capsule and automix syringe, allowing you to work more efficiently and effectively.

Two Delivery Options – One Powerful Restoration Solution.



Choose your preferred delivery method — capsule or automix syringe.



For capsule, activate, triturate and place into capsule applicator.



For syringe, simply apply automix tip.



For easier intraoral access, apply the optional automix tip with elongation tip.



Dispense desired amount of G-CEM into restoration.



Seat crown and tack cure for 2 – 4 seconds.



Easily remove excess material with scaler tip and perform final light cure.



Here's a tip for you...

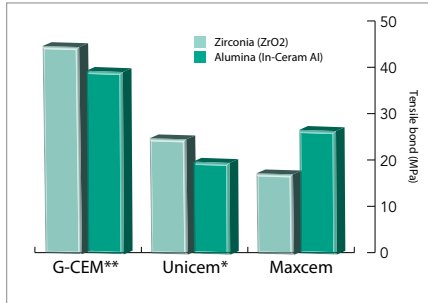
G-CEM's automix tip is almost 30% shorter than those of the competition. Smaller tip = less waste.



For All Indications and No Sensitivity

Tensile Bond to Restoratives†

Superior bonds to ceramic restorations



Tests prove superior bond strength of G-CEM Capsule and G-CEM Automix for ceramic restorations.

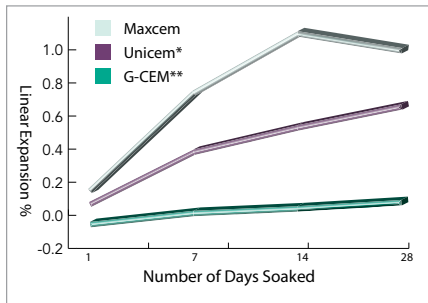
Just Pick Your Mix

Both G-CEM™ Capsules and G-CEM Automix provide numerous benefits to your patients – and to you. Both set fast and complement a variety of restorations, allowing you to see more patients in less time, while never compromising the quality of their procedure. G-CEM and G-CEM Automix offer:

- Lowest lineal expansion
- G-CEM capsules contain 70% more cement than Unicem's Aplicaps
- 25% more radiopacity than Unicem Clicker
- Lowest solubility

Expansion Percentages (water)†

The LOWEST linear expansion of any self-adhesive resin cement



G-CEM Capsule and G-CEM Automix have a much lower linear expansion than other cements.

G-CEM Capsule



Ideal for single-unit applications.

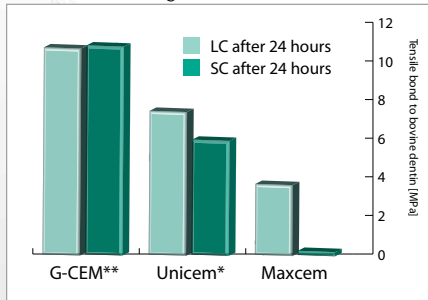
G-CEM Automix



Ideal for multiple-unit applications.

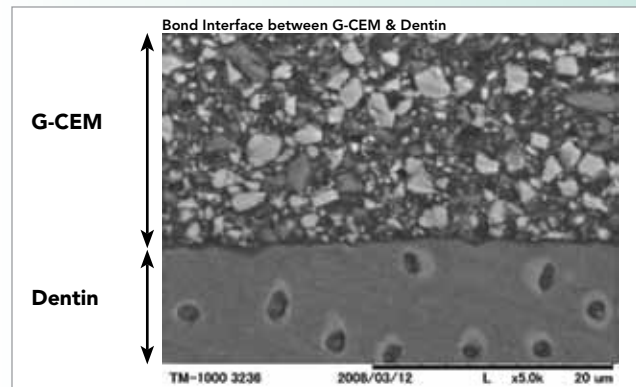
Enamel Light-Cure & Dentin Self-Cure Results†

Strong bonds to dentin and enamel with self-cure and light-cure



After thermocycling, G-CEM Automix has a higher bond strength than both RelyX™ Unicem and Maxcem™.

SEM on Bovine Dentin



*Clicker, **Automix

†Internal and or independent testing data on file

For longer-lasting restorations, pick your mix: G-CEM Capsule and G-CEM Automix.

What the Experts are Saying:

"G-CEM™ may well be the best combination of versatility and ease of use ever in a crown and bridge cement."

— **Dr. Edmond R. Hewlett**, Associate Professor and Vice-Chair, UCLA School of Dentistry

"G-CEM is as easy to use as conventional glass ionomer cement products with the added benefit of strong, self-etching resin technology. Cleanup is as easy as flicking away excess with an explorer."

— **Dr. Robert Lowe**, North Carolina

"G-CEM is an easy-to-use, self-adhesive resin cement. The variety of G-CEM shades and its color stability allow for nice results with aesthetic all-ceramic restorations."

— **Dr. Wynn Okuda**, Past President – AACD, Hawaii

"Cementing crowns with G-CEM is a fast and comfortable experience for my patients and, in most cases, without the need for injections. Regardless of whether the prep is moist or dry, post-treatment sensitivity has been virtually eliminated."

— **Dr. William Bennett**, Illinois

Use the information below to order G-CEM today.

G-CEM Product Codes:

G-CEM Capsule Refill Package (50 capsules in one shade)

002584 Shade A2
002585 Shade AO3
002586 Shade Translucent
002587 Shade BO1

002588 G-CEM Capsule Assorted Refill Package (50 capsules in assorted shades)

20 - Shade A2 20 - Shade Translucent
5 - Shade AO3 5 - Shade BO1

439003 G-CEM Capsule Starter Kit

1 - Box 50 Capsules Assorted Refill Package (002588)
1 - GC Capsule Applier

G-CEM Automix — 4.8 g Syringe (2.7 mL) x 2, G-CEM Automix tip x 20

002898 Shade A2
002899 Shade Translucent

002902 G-CEM Automix Mixing Tips Refill x20

002903 G-CEM Automix Mixing Tips Refill with Endo Extension Tip x 10



SKU #603004
800.323.7063
www.gcem.com
www.gcamerica.com
www.gcamerica.com/training
© 2010 GC America Inc.