



G-ænial™

Universal Flo • Flo • Bond

Your composite restoratives have ævolved.



G-ænial™ Universal Flo & G-ænial™ Flo
Nano-Hybrid Flowable Composites

Exclusive new filler technology
**used for the first time in composite
chemistry**, that results in unparalleled
aesthetics, strength and handling.

3M

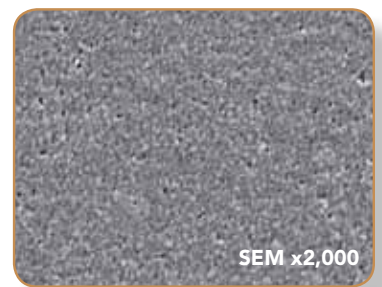
Finally... a flowable with no sacrifices.

G-ænial™ Universal Flo

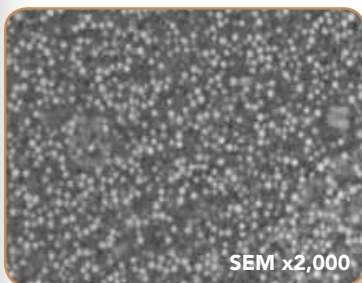
Finally... a flowable with truly unique filler properties.

GC America's new advanced filler consists of 200nm strontium glass particles that are silanated using a new proprietary technology, highly dispersed and have a low refractive index for beautiful final restorations. These particles and their homogeneous dispersion inhibit clustering and prevent loss of particles at the surface during polishing and everyday wear.

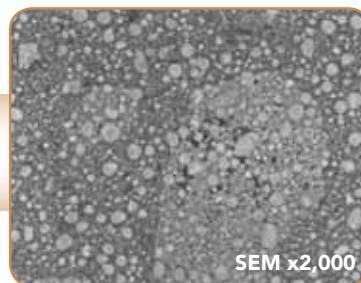
Conversely, spherical nano-clusters and conventional micro-hybrids result in a surface that is rougher, with lower polishability, and lower wear resistance.



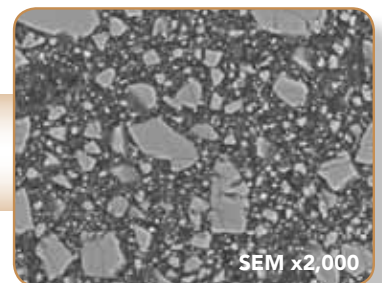
G-ænial Universal Flo
Completely homogeneous dispersion for increased wear resistance, high gloss retention and flexural strength.



Spherical nano-hybrid
Many air bubbles and loss of filler can be observed.



Spherical nano-cluster
The fillers form large clusters, causing a rougher surface, decreased polishability and lower wear resistance.



Micro-hybrid
The large fillers result in a rougher surface, lower wear resistance and decreased polishability.

"G-ænial Universal Flo is an outstanding flowable composite. It's unique handling characteristics along with it's beautiful aesthetics, polishability and strength make it an indispensable part of my restorative armamentarium."

- Hal Stewart, DDS, Flower Mound, Texas.

Finally... a flowable for Class I, II, III, IV & V restorations.

Due to its advanced physical properties, G-ænial Universal Flo is recommended for multiple class restorations as well as splinting of mobile teeth, use as a fissure sealant and minimum intervention dentistry.



Class I

Class II

Class III

Class IV

Class V

Splinting

Aesthetics & Wear

Finally... a flowable with superior aesthetics.

The silanated and homogeneously dispersed filler particles in G-ænial Universal Flo result in:

- Easy polishing
- Less filler plucking
- High polish and polish retention
- High translucency



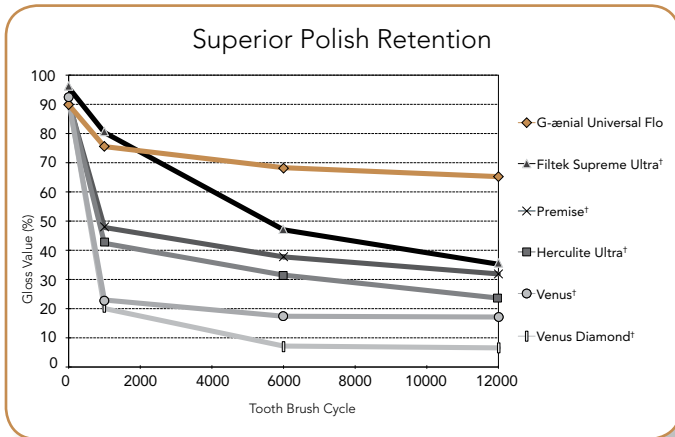
Replacement of Class I amalgam due to secondary caries using G-ænial Universal Flo, shades A3 and A4. Courtesy of Dr. S. Koide, Nagano, Japan.



Class V restorations using G-ænial Universal Flo. Courtesy of Wynn Okuda, DMD, Honolulu, Hawaii.

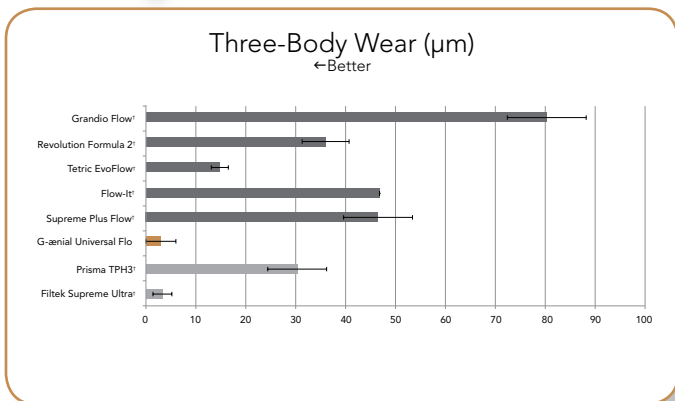


Anterior portion of full-mouth restoration. Following orthodontic treatment to correct mid-face collapse and increase vertical dimension a full-mouth composite addition rehabilitation was undertaken. G-ænial Universal Flo was used to create 360° veneers on the upper, and facial veneers on the lower anteriors. Courtesy of Dr. Robert McBride, Long Beach, California.

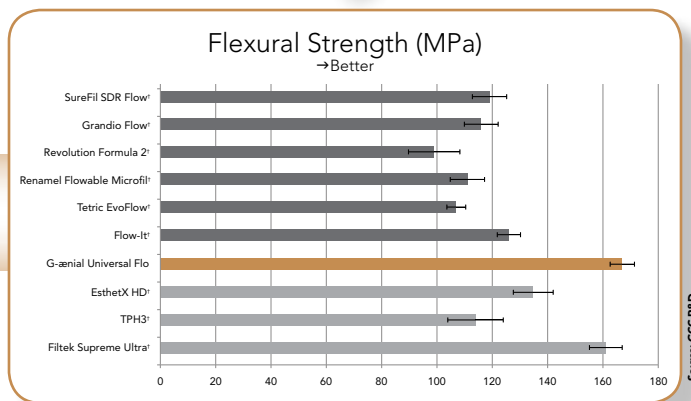


"Simply great! G-ænial Universal Flo has made it easy for me to achieve success with Minimal Invasive Dentistry." - Wynn Okuda, DMD
Past President (2002-03) and Accredited Member of the American Academy of Cosmetic Dentistry.

Finally... incredible wear resistance & strength.



Testing using the standard three-body wear test for 100,000 cycles has shown that the wear resistance of G-ænial Universal Flo (3.0 µm) is significantly lower than for these flowable composites tested and significantly lower or equal to conventional composites tested.



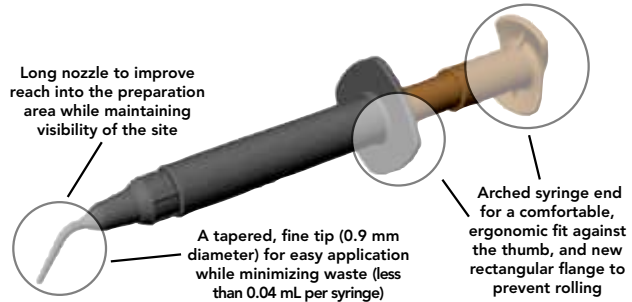
The flexural strength of G-ænial Universal Flo is higher than leading flowable and conventional composites. This is a result of the homogeneously dispersed nano-hybrid particles in G-ænial Universal Flo and the proprietary silanating treatment of the particles.

Strength



Finally... easy handling, easy delivery and an easy shading system.

- High viscosity suitable for Class I - V restorations
- Can be applied directly from the syringe for ease of use and convenience
- Adapts well to the shape of the cavity wall and is easy to contour
- Excellent thixotropic property and flows well under pressure
- The new syringe design makes delivery easy, efficient and ergonomic

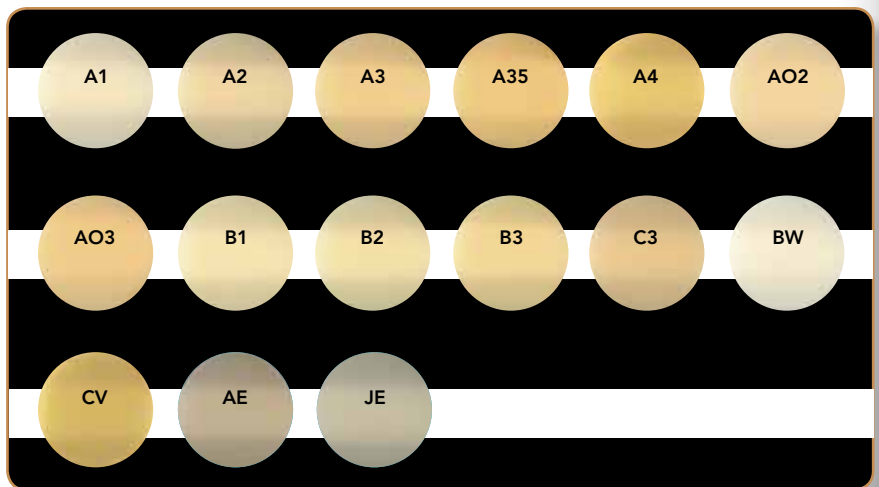


"Compare G-aenial Universal Flo side by side with any of the other flowable composites out there and you will immediately notice the difference in its density, naturalness and polishability." - Dr. Robert McBride, Long Beach, California.

G-aenial Universal Flo uses an incredibly easy 15-shade system based on the familiar VITA® shade guide.

In addition to nine standard universal shades, it also has opaque, enamel, bleaching and cervical shades available to meet all of your aesthetic needs. It can be used as a single-shade restorative material or for an aesthetic multi-shade layering technique.

- A1, A2, A3, A3.5, A4, B1, B2, B3, C3
- Opaque: AO2, AO3
- Bleaching: BW (Bleach White)
- Cervical: CV
- Enamel: AE (Adult Enamel), JE (Junior Enamel)



Finally... the flowable composites category has ævolved.

Never before has a material with the handling of a flowable been combined with the strength and aesthetics of a universal composite. No other material offers all of these advantages.

Superior ++	Good +
Fair -	Poor --

Physical Properties Summary

	Filler Type	Gloss Retention	Polishability	Flexural Strength	Wear Resistance
G-aenial Universal Flo	Nano-hybrid (homogeneous dispersion)	++	++	++	++
Estelite Flow Quick†	Nano	+	++	-	+
Majesty LV† (flowable)	Micro	--	--	+	--
Beautiful Flow Plus F00†	Micro	--	--	--	-
Filtek Supreme Flow†	Nano Cluster	-	+	-	--

G-ænial™ Bond



G-ænial Bond is a 7th generation, one-step, self-etch bonding agent for all your bonding needs. The new formulation results in improved bond strengths to both enamel and dentin due to the inclusion of a less hydrophobic monomer. This advanced HEMA-free formulation is incredibly efficient and easy to use.

New Technique: Selective Etching

G-ænial Bond was designed specifically to provide the option of selective etching to allow the clinician to use the best possible technique to gain the maximum advantage: self-etch on dentin and etch-and-rinse on enamel. Independent clinical tests have proven that G-ænial Bond's unique formulation ensures that bond strength does not decrease if the dentin is etched inadvertently.

Selective Etching Advantages

Dentin: Self-etch	Enamel: Etch-and-rinse
<ul style="list-style-type: none"> • Easy, saves time • Reduced risk of post-op sensitivity 	<ul style="list-style-type: none"> • Higher bond strength to uncut enamel

Effective, Economical and Easy to Use

- No post-op sensitivity (two independent clinical trials found zero reported cases of post-op sensitivity in 90 Class I and Class V restorations)¹
- Thin film layer for easy clean-up
- 300 drops per bottle for economic benefits
- Rapid, easy application

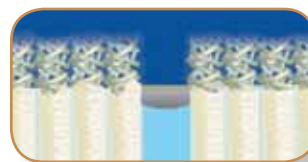


Key Formulation Improvements

To enhance the bond strength to enamel, the amount of phosphoric ester monomer increased. As a result, pH value decreased from 2.0 to 1.5. To get better permeability to dentin and enamel, a less hydrophobic monomer was used. This HEMA-free formulation also avoids degeneration of the collagen fibrils and water is not attracted to the area, therefore improving bond strength.



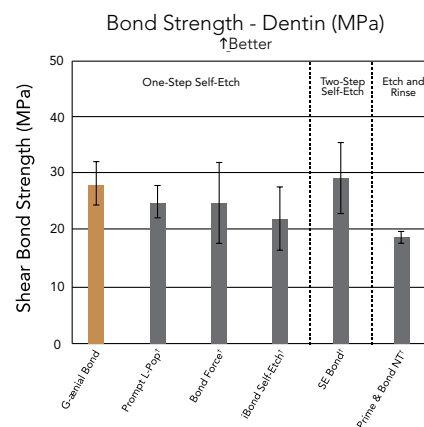
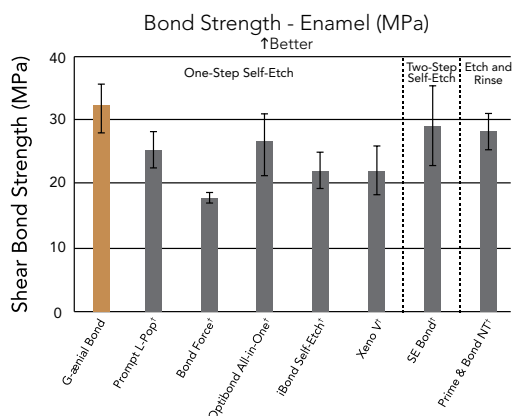
HEMA poly gel – attracts water
Collagen fibers degrade over time



G-ænial Bond - HEMA-free
No degradation of collagen

Increased Bond Strength

In clinical testing G-ænial Bond has shown higher shear bond strengths to enamel than these one-step and two-step self-etch competitors. Additionally, dentin bond strength testing showed that G-ænial Bond outperformed many leading competitors.



G-ænial™ Flo

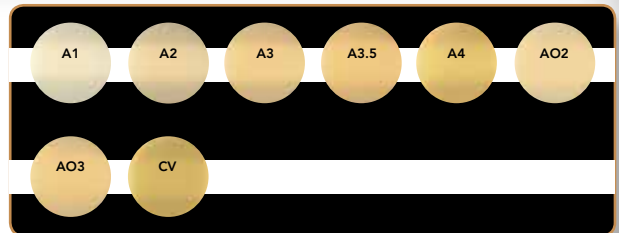


G-ænial Flo is a partner product to G-ænial Universal Flo. It is indicated for use in small restorations and as a cavity liner. This highly radiopaque and highly flowable composite enables easy placement and flow into preparations for excellent handling.

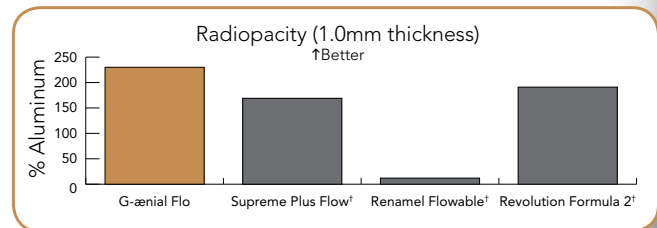
G-ænial Flo offers superior handling, and is also delivered using the same innovative syringe design. Its flexural strength and wear resistance are superior to all leading flowable composites.



Liner Restore small defects Fissure sealant Block undercuts Tunnel restoration



G-ænial Flo is available in eight shades for your aesthetic needs, following the VITA® shade system.



G-ænial Flo demonstrates higher radiopacity for easy follow-up.



G-ænial Universal Flo Refills, Contains: 1 Syringe (3.4g, 2mL) and 10 Dispensing Tips.

004202 Shade A1	004211 Shade AO2	004210 Shade C3
004203 Shade A2	004212 Shade AO3	004214 Shade CV
004204 Shade A3	004207 Shade B1	004216 Shade AE*
004205 Shade A3.5	004208 Shade B2	004215 Shade JE*
004206 Shade A4	004209 Shade B3	004213 Shade BW

* AE: Adult Enamel, JE: Junior Enamel

G-ænial Flo Refills, Contains: 1 Syringe (3.8g, 2mL) and 10 Dispensing Tips.

004194 Shade A1	004197 Shade A3.5	004200 Shade AO3
004195 Shade A2	004198 Shade A4	004201 Shade CV
004196 Shade A3	004199 Shade AO2	

004193 Dispensing Tips Refill, Contains: 15 Dispensing Tips.



400222 G-ænial Bond & Universal Flo Kit

Contains: 1 G-ænial Bond Kit (5mL) and 1 G-ænial Universal Flo Syringe (Shade A2, 3.4g, 2mL)

400221 G-ænial Bond & Flo Kit

Contains: 1 G-ænial Bond Kit (5mL) and 1 G-ænial Flo Syringe (Shade A2, 3.8g, 2mL)



004217 G-ænial Bond Kit

Contains: 1 G-ænial Bond Bottle (5mL), 50 applicators and 20 trays.

004220 G-ænial Bond Refill

Contains: 1 G-ænial Bond Bottle (5mL).

1 Data on file.

† Not a registered trademark of GC America Inc.



SKU #606004
800.323.7063

www.gcamerica.com
www.gcamerica.com/training
© 2011 GC America Inc.