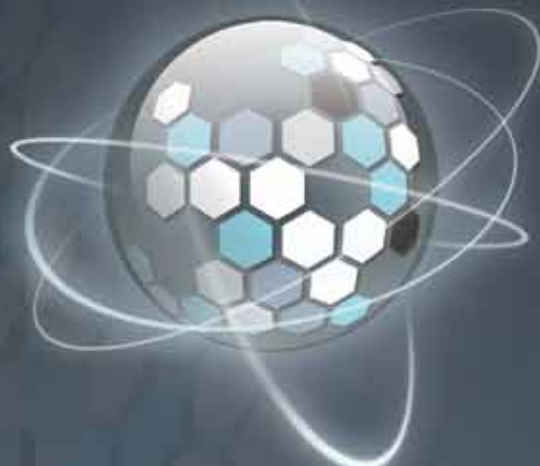




# KALORE™

THE SCIENCE BEHIND THE SMILE™



WITH NEW  
MONOMER  
TECHNOLOGY  
FROM **DuPont**



Universal  
Light-Cured  
Nano Composite



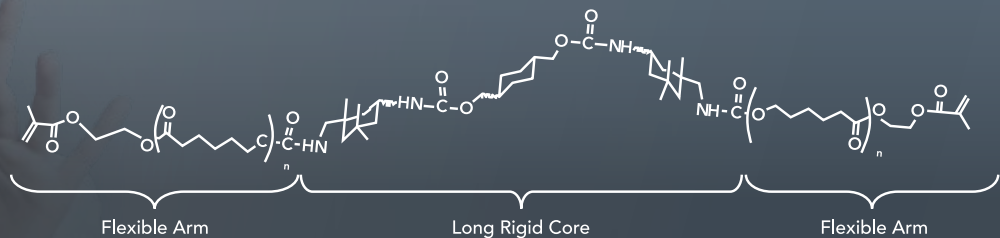
# Witness the Discovery of a Revolutionary Composite



## Your Search is Over – KALORE™ is Here.

Dentistry has relied on the same basic monomer technology in its materials for decades with advances in resin technology being primarily on the filler side (filler size, filler shape, filler type, etc.). The newest innovation from GC America utilizes an exclusive new monomer technology from DuPont to create a truly revolutionary TOTAL PACKAGE in aesthetic restorations.

### NEW Monomer Technology from DuPont\*



KALORE challenges the status quo by taking aesthetic restorations to the next level – making them more sculptable, easier to polish with exceptional gloss and highly resistant to wear.

Three components factor into KALORE's unique design. First, DuPont's new monomer technology licensed exclusively to KALORE. Second, GC America's newly-developed, patented HDR (High Density Radiopaque) prepolymerized fillers. Finally, the proprietary interface between the filler and the matrix is a critical factor in the success and longevity of this composite. With innovation from every angle, KALORE truly offers the total package of:

- **Superior handling**
- **Unsurpassed aesthetics**
- **Significant longevity & durability**

# An Innovation in Restorations

## Using Exclusive, New Monomer Technology from DuPont

**KALORE™ represents the perfect discovery of science and beauty – the total package in aesthetic restorations that has eluded you for so long. Until now.**

### Benefit #1: Superior Handling – Complete Control is in Your Hands

- KALORE is non-sticky due to the new, patented HDR filler technology
- The DuPont monomer's stiff core and flexible arms create putty-like properties and make it easier to spread

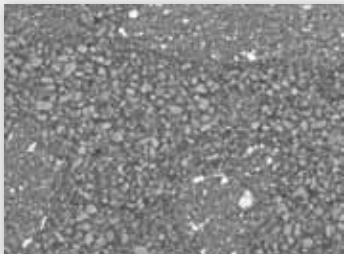
**Result: KALORE's unique properties allow for easy shaping and adaptation to the restoration surface. KALORE is highly sculptable with no slumping.**

### Benefit #2: Unsurpassed Aesthetics – Flawless Beauty, So Easy to Create

- Exceptional gloss: } The lower shrinkage stress of the filler-matrix interface allows for less risk of filler dropout.
- Easy polishability: }
- Sustained luster: }
- Chameleon effect: The optimized refractive index of the filler and monomer matrix result in near-perfect color matching

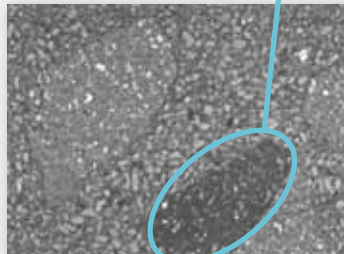
**Result: Unmatched aesthetic success and perfect restorations for you and your patients.**

SEM #1



KALORE with DuPont Monomer – No gap on prepolymerized filler interface; no dropout fillers were observed.

SEM #2



KALORE without new DuPont Monomer – Slight gap on prepolymerized filler surface; dropout prepolymerized fillers were observed.



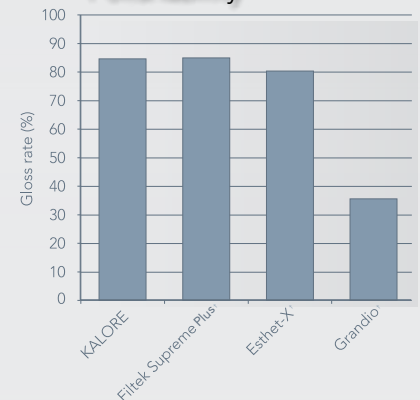
Courtesy of douglas design Technique International



Courtesy of Dr. Frank J. Milnar, St. Paul, MN

At the end of the day, it all comes down to how well a composite looks when the patient smiles. KALORE delivers the superior results the dental community has come to expect from GC America.

### Polishability



*"I believe this new monomer formulation has solved the shrinkage challenge by removing the weak link – the shorter chain methacrylate matrix. This new system provides the potential for reducing the clinical challenges such as marginal gap, microleakage, stain and secondary caries while enhancing the aesthetics and wear resistance."*

– douglas design Technique International

# The Science Behind the Smile – PROVEN!



The proof is in the result and the perfect results achieved by using KALORE™ are exemplified in Aureana Tseu – Miss Hawaii, 2009 (see photos at right). In an arena where perfection is a requirement, the qualities of KALORE made it the material of choice to highlight and complement her exceptional beauty as she pursued her quest for Miss USA 2009.



*“Amazing! KALORE is not only so easy to use, it polishes and feels like porcelain. With its remarkable chameleon effect and low marginal shrinkage, this composite resin has tremendously moved the bar up to a new plateau in aesthetic restorative materials.”*

– Dr. Wynn Okuda, DMD, Past President, AACD, Honolulu, HI



Courtesy of Dr. Wynn Okuda,  
Honolulu, HI

## Benefit #3: Significant Longevity and Durability – Sustained Form and Function

During polymerization of composite resin, the resin matrix reduces in volume while the particles retain their prepolymerization volume. This results in stress at the filler and resin matrix interface. This stress remains within the cured composite resin and can lead to early replacement of restorations, as particles will be lost from the matrix. To reduce polymerization stress at the filler/matrix interface, lower levels of polymerization shrinkage are required.

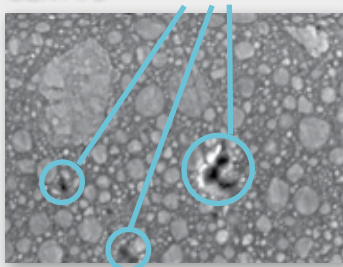
The average restoration loses form, function and aesthetics between three to four years as the particles drop out due to shrinkage stress. This causes:

- Surface to lose luster
- Surface to become rough
- Stains to become evident
- Greater wear and tear overall

KALORE's unique design results in the lowest shrinkage stress vs. the competition which means less stress around the fillers and better durability and longevity for the restoration.

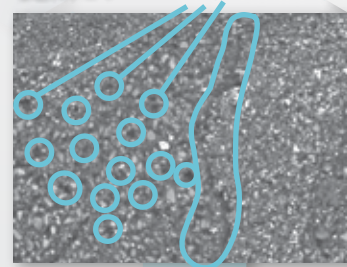
**Result: KALORE keeps your restorations beyond compare longer by maintaining their form and function over time.**

SEM #3



Filtek Supreme Plus<sup>†</sup>

SEM #4

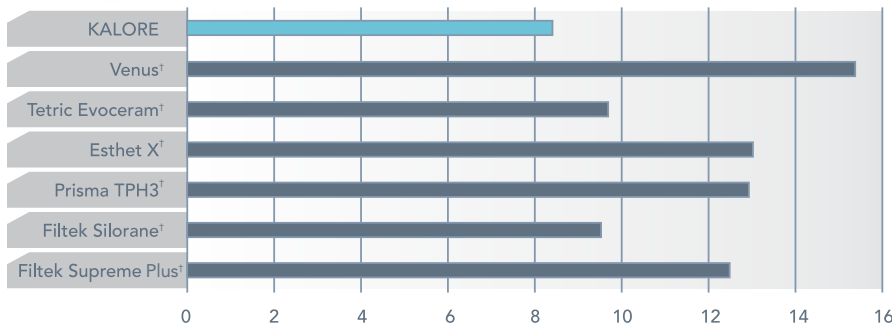


Tetric EVO Ceram<sup>†</sup>

# KALORE™ : A Recipe for Your Success



## Shrinkage Stress



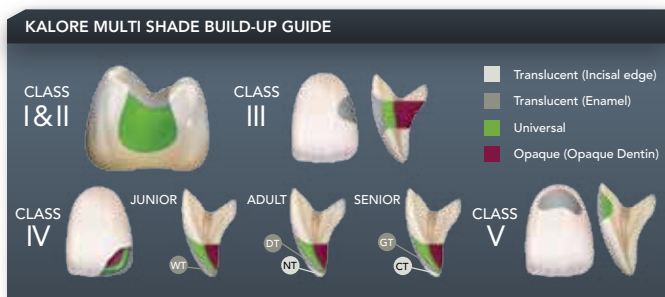
KALORE clearly exhibits the lowest shrinkage stress amongst those tested.

KALORE offers three opacities for precision shade matching and blending. Whether you choose to use a single shade or multiple shades for polychromatic stratification, your restorations will look as beautiful as a ceramic restoration, as smooth and perfect as porcelain.

In 90% of cases, the use of a Universal shade will be sufficient. In the remaining 10% – those “special” cases – a combination of Universal, Opaque and/or Translucent shades would be selected. KALORE’s simplified shade system gives you a “recipe” to follow for perfection and total control in your restoration aesthetics.

## KALORE's Simplified Shade System

	A1	A2	A3	A3.5	A4	B1	B2	B3	C2	C3	D2	CV	CVD	BW	XBW
Opaque	OBW	AO2	AO3	AO3	AO4	OBW	AO2	AO3	AO3	AO4	AO2	AO4	AO4	OBW	OXBW
Universal	A1	A2	A3	A3.5	A4	B1	B2	B3	C2	C3	D2	CV	CVD	BW	XBW
Translucent	WT	WT	DT	DT	DT	WT	WT	DT	DT	DT	WT	DT	DT	WT	WT



Courtesy of Dr. Wynn Okuda, Honolulu, HI  
Tooth restored with one shade only.

*“As an artist, I look for materials that can complement my creativity. Essentials such as handling, the ability to match tooth structure and capture the correct reflective index of light are attributes of a great composite. KALORE definitely meets these standards of excellence.”*

– Dr. Frank J. Milnar, DDS, AACD, St. Paul, MN

# KALORE™ Product Codes:

Use the information below to order KALORE today.

## KALORE Syringe Packages



### Opaque

- 003572 Shade AO2 Package
- 003573 Shade AO3 Package
- 003574 Shade AO4 Package
- 003575 Shade OBW Package
- 003576 Shade OXBW Package

### Translucent

- 003592 Shade WT Package
- 003593 Shade DT Package
- 003594 Shade CT Package
- 003595 Shade NT Package
- 003596 Shade GT Package
- 003597 Shade CVT Package

### Universal

- 003577 Shade A1 Package
- 003578 Shade A2 Package
- 003579 Shade A3 Package
- 003580 Shade A3.5 Package
- 003581 Shade A4 Package
- 003582 Shade B1 Package
- 003583 Shade B2 Package
- 003584 Shade B3 Package
- 003585 Shade C2 Package
- 003586 Shade C3 Package
- 003587 Shade D2 Package
- 003588 Shade CV Package
- 003589 Shade CVD Package
- 003590 Shade BW Package
- 003591 Shade XBW Package

## KALORE Unitip Packages



### Opaque

- 003598 Shade AO2 Package (10 Count)
- 003599 Shade AO3 Package (10 Count)
- 003600 Shade AO4 Package (10 Count)
- 003601 Shade OBW Package (10 Count)
- 003602 Shade OXBW Package (10 Count)

### Translucent

- 003607 Shade WT Package (10 Count)
- 003608 Shade DT Package (10 Count)
- 003609 Shade CT Package (10 Count)
- 003610 Shade NT Package (10 Count)
- 003611 Shade GT Package (10 Count)
- 003612 Shade CVT Package (10 Count)

### Universal

- 003613 Shade A1 Package (20 Count)
- 003614 Shade A2 Package (20 Count)
- 003615 Shade A3 Package (20 Count)
- 003616 Shade A3.5 Package (20 Count)
- 003617 Shade A4 Package (20 Count)
- 003618 Shade B1 Package (20 Count)
- 003619 Shade B2 Package (20 Count)
- 003620 Shade B3 Package (20 Count)
- 003621 Shade C2 Package (20 Count)
- 003622 Shade C3 Package (20 Count)
- 003623 Shade D2 Package (20 Count)
- 003603 Shade CV Package (10 Count)
- 003604 Shade CVD Package (10 Count)
- 003605 Shade BW Package (10 Count)
- 003606 Shade XBW Package (10 Count)

### KALORE Trial Kits

- 003624 Syringe Trial Kit\*\*
- 003569 Unitip Trial Kit\*\*

\*\*Trial Kit contains A1, A2 and BW (Bleach White)

### Misc. Items

- 003571 KALORE Shade Guide

**GC**  
GC America Inc.

3737 West 127th Street  
Alsip, IL 60803

800.323.7063  
www.gcamerica.com  
www.gcamerica.com/training  
www.kalore.net

© 2011 GC America Inc.  
SKU #606100

\*Monomer Technology under license from E. I. du Pont de Nemours and Company  
† not a registered trademark of GC America Inc.