



REINFORCEMENT WHERE CORE STRENGTH MATTERS

everX Flow™

Short-Fiber Reinforced Flowable Composite
For Dentin Replacement





THE TOUGHEST COMPOSITE SUBSTRUCTURE TO REINFORCE YOUR RESTORATIONS

everX Flow™ is a highly fracture resistant composite substructure which incorporates unique glass microfibers and full silane coverage technologies. Following the same principles as rebar in construction, the fibers in everX Flow™ strengthen restorations and weakened tooth structure from within to help prevent them from cracking.

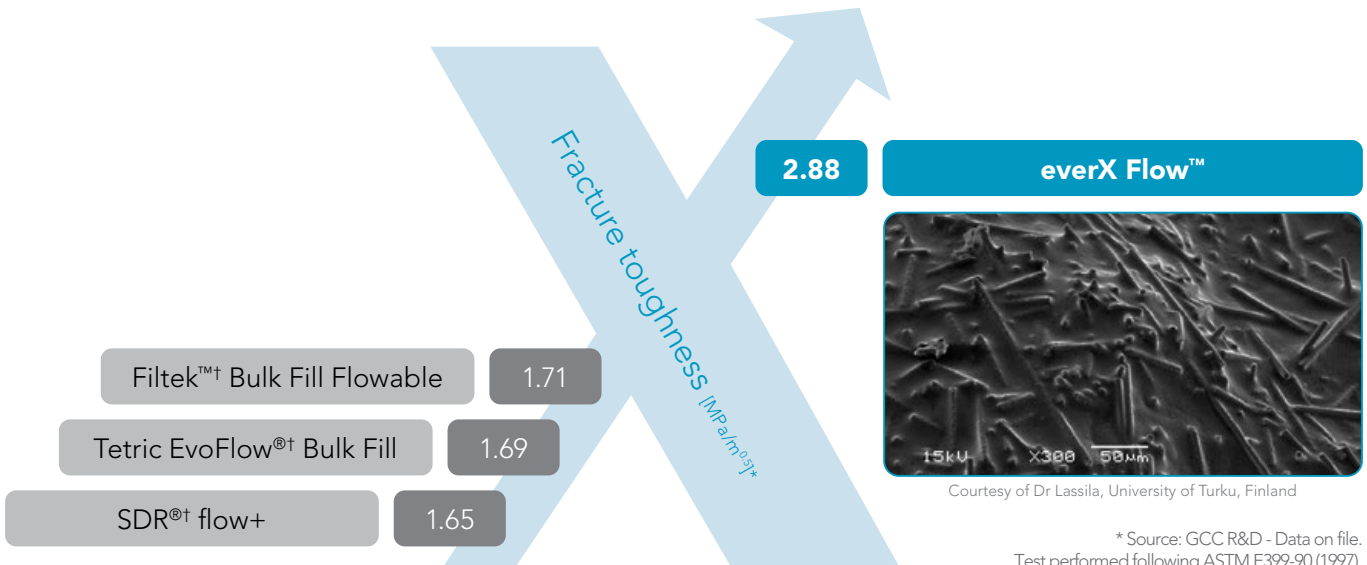
everX Flow™ may be used as a dentin replacement material in bulk filling and core build-up applications. It may also be used in cases where endodontic stability must be restored; for example, in cases where amalgam fillings are being replaced and cracked dentition is present.



Courtesy of
Dr Javier Tapia Guadix, Spain

Perfect Thixotropy For Easy Placement and Great Adaptation

everX Flow™ features a unique thixotropy that will easily adapt to challenging preparations and helps to avoid porosities. Its injectable viscosity allows complete control, providing ease of placement without slumping. Whether you're delivering material to a maxillary molar, or to a posterior tooth on the mandibular, everX Flow™ will stay where you place it.

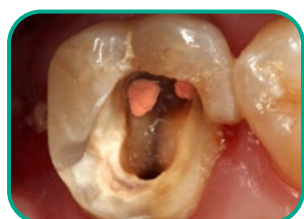


* Source: GCC R&D - Data on file.
Test performed following ASTM E399-90 (1997).



PROVIDES X-TRA STRENGTH WHERE IT MATTERS MOST!

The biomimetic restorative technique using short-fiber reinforced composite substructures may be used routinely for coronal restorations and teeth with large cavities in high stress-bearing areas*.



Before



Fiber post cemented with GC FujiCEM® Evolve



everX Flow™ base application



Ready for crown preparation

Courtesy of
Dr. Robert Marus, USA



Before



everX Flow™ base application



Layered with G-aenial Sculpt®



Final restoration

Courtesy of
Dr. Victor Cerdillo Félix, USA

Two Shades To Address All Your Needs

Bulk shade

Depth of cure
5.5 mm

Optimal for deep posterior cavities



Dentin shade

Depth of cure
2.0 mm

Optimal for more esthetic results and for core build-up



Prepare the cavity



In case of a Class II cavity, build the missing walls with a conventional composite



Fill the cavity with everX Flow™



Final result after covering with a conventional composite

everX Flow™ provides an excellent foundation for your larger restorations

- Core build-up:
 - » Under indirect prostheses
 - » Including post and core substructures
- Bulk filling
- Dentin replacement
- Substructure for endodontically-treated teeth

*Ganoush S, Gargoum A, Valitlu P, Lassila L. Short fiber-reinforced composite restorations: A review of the current literature. Dental Biomaterials; 2018.)



ORDERING INFORMATION



everX Flow™

everX Flow™ Refills

Contains: One 2.0mL syringe and 20 disposable tips.
 012898 Bulk Shade (Translucent) 012899 Dentin Shade



G-aenial™ Universal Injectable

G-aenial™ Universal Injectable Unitip Refills

Contains: 15 0.16mL unitips.

012348 A1	012349 A2	012350 A3
012351 A3.5	012352 A4	012353 B1
012354 B2	012355 CV	012356 CVD
012357 AO1	012358 AO2	012359 AO3
012360 JE	012361 AE	012362 XBW
012363 BW		

G-aenial™ Universal Injectable Syringe Refills

Contains: Two 1.7g (1.0mL) syringes, 10 long dispensing tips and 10 short dispensing tips.

012364 A1	012365 A2	012366 A3
012367 A3.5	012368 A4	012369 B1
012370 B2	012371 CV	012372 CVD
012373 AO1	012374 AO2	012375 AO3
012376 JE	012377 AE	012378 XBW
012379 BW		

G-aenial™ BULK Injectable

G-aenial™ BULK Injectable Refills

Contains: One 3.4g (2.0mL) syringe, 20 Dispensing Tips III (plastic) and one light protective cap.

012394 A1	012395 A2
-----------	-----------



G-aenial Sculpt®

G-aenial Sculpt® Syringe Refills

Contains: One 2.0mL Syringe.

009152 A1	009153 A2	009154 A3	009155 A3.5
009156 A4	009168 AE	009161 AO1	009162 AO2
009163 AO3	009157 B1	009158 B2	009159 B3
009164 BW	009160 C3	009166 CV	009167 JE
009165 XBW			

G-aenial Sculpt® 20-Unitip Refills

Contains: 20 0.16 mL unitips.

009169 A1	009170 A2	009171 A3	009172 A3.5
009173 A4	009174 B1	009175 B2	009176 B3
009177 C3			

G-aenial Sculpt® 10-Unitip Refills

Contains: 10 0.16mL unitips.

009185 AE	009178 AO1	009179 AO2	009180 AO3
009181 BW	009183 CV	009184 JE	009182 XBW

G-Premio BOND™

012691 G-Premio BOND™ Kit

Contains: One 5mL bottle, 50 disposable applicators (fine), 20 disposable dispensing dishes.

012696 G-Premio BOND™ 5mL Bottle Refill

009276 G-Premio BOND™ Unit Dose Package

Contains: 50 unit doses (0.1 mL each).