



Simplicity,  
esthetics and  
performance in  
your hands

## G-ænial™ A'CHORD

The advanced universal composite  
with unishade simplicity



Since 1921  
100 years of Quality in Dental

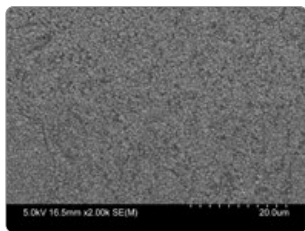
# A'CHORD Revolutionary technology

## Proprietary filler and coating

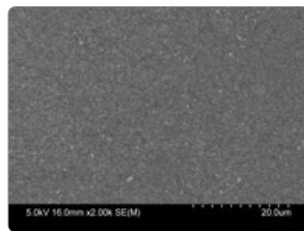
G-ænial™ A'CHORD represents another significant step forward in the advancement of composite materials. It is the combination of two remarkable proprietary technologies created by GC; **Full-Coverage Silane Coating (FSC)** and **High-performance Pulverised CERASMART® (HPC)**. The result? The ideal synergy between advanced physical properties such as wear resistance\*, gloss retention\* and low discoloration<sup>1</sup> with simplified handling, providing the clinician excellent adaptation to the cavity preparation. Reducing placement time, it provides excellent marginal integrity and consistently yields natural-looking restorations!

<sup>1</sup> Mizukami et al. IADR2020. Evaluation of Water Sorption and Colour Stability of Paste-Resin Composite. J Dent Res. 2020;99 Spec Issue A: #2471.

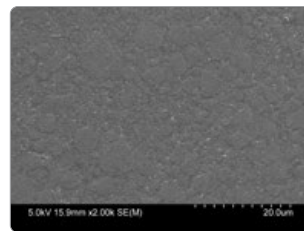
\*Source: GC R&D, Japan, 2019. Data on file.



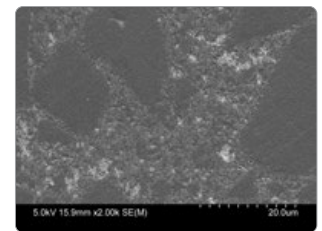
G-ænial™ A'CHORD



Tetric® EvoCeram®†

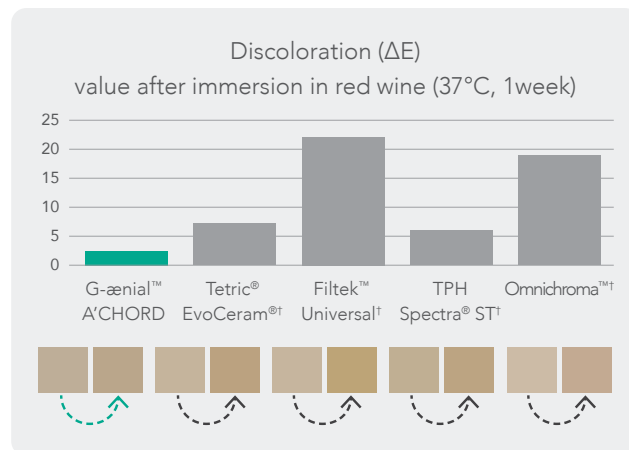


Filtek™ Universal†



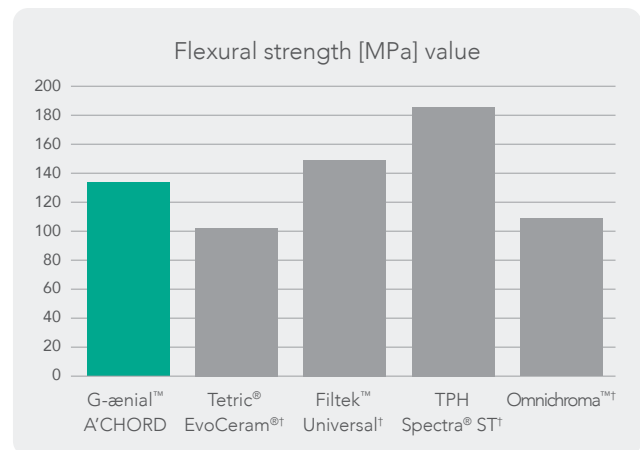
Clearfil™ Majesty ES-II†

## G-ænial™ A'CHORD High Stain and Wear Resistance

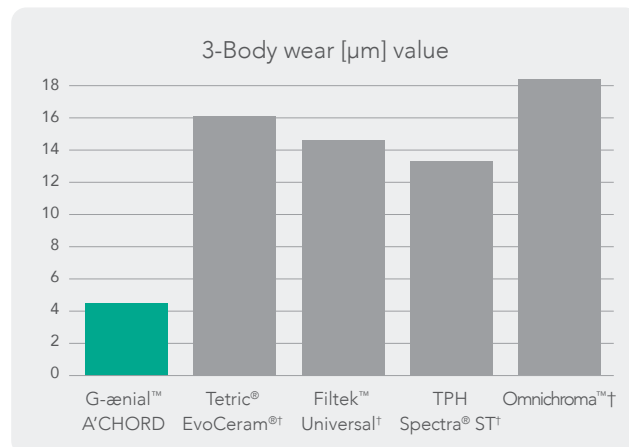


Source: GC R&D, Japan, 2020. Data on file.

## G-ænial™ A'CHORD High Strength and Radiopacity



Source: GC R&D, Japan, 2020. Data on file.



Source: GC R&D, Japan, 2020. Data on file.

Radiopacity (318 % Al) optimizes the radiographic follow-up over time.



Courtesy of Dr W. Boujema, France

# G-ænial™ A'CHORD revolution from GC

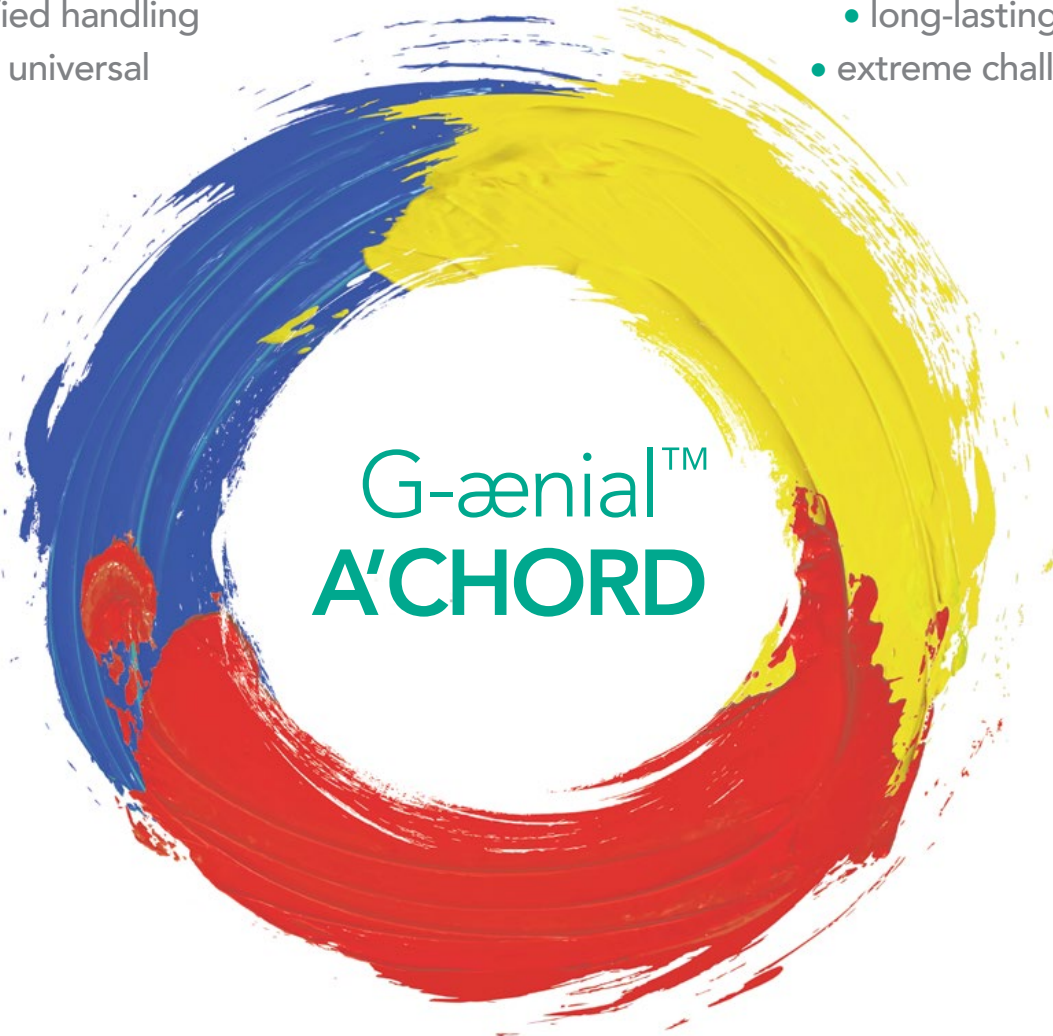
With more than 100 years of experience in serving dentistry and **over one billion composite restorations worldwide**, GC introduces its proprietary **High-performance Pulverised CERASMART® (HPC) filler** and **Full-Coverage Silane Coating (FSC)** technologies with its latest universal composite G-ænial™ A'CHORD which brings together simplification, invisible fillings, natural fluorescence and **advanced technologies in one syringe**.

## A'CHORD Simplification

- simplified unishade system
- simplified handling
- simply universal

## A'CHORD Esthetics

- natural fluorescence
  - long-lasting gloss
- extreme challenges



## A'CHORD Revolutionary technology

- proprietary filler and coating
- high stain and wear resistance
- excellent radiopacity

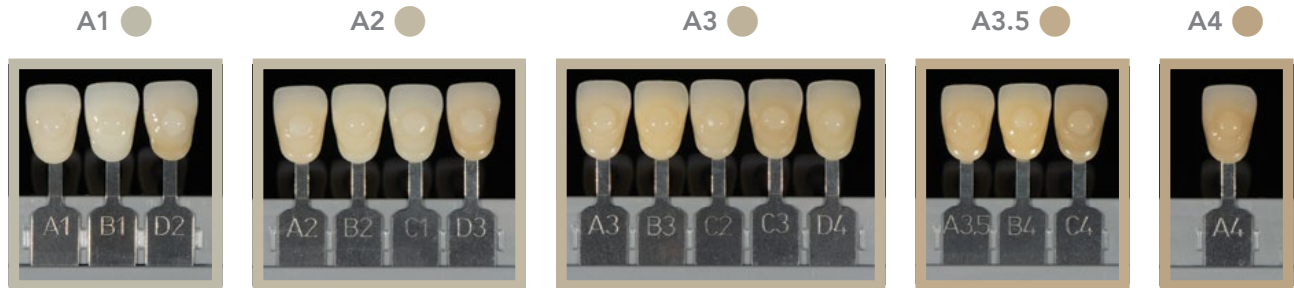
G-ænial™ A'CHORD is a **universal composite that delivers long lasting, invisible restorations**. Designed to save time and therefore costs, it brings together superior technology in a straightforward product. Now you can feel truly confident using a material with **effortless handling** even in challenging cases.

**Impress your patients with this simplified solution.**

# A'CHORD Simplification

## Simplified unishade

G-ænial™ A'CHORD always delivers more: a simplified unishade system of **5 core shades** that achieves the esthetics of the 16 classic Vita shades **with ease**. With this reduced inventory, you will save time and costs. Its unique filler technology mimics natural light reflection resulting in impressive invisible restorations.



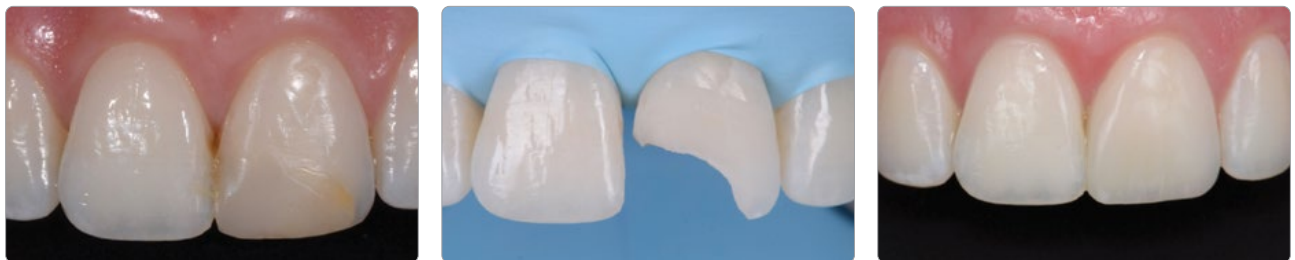
## Simplified handling

G-ænial™ A'CHORD provides consistently simplified handling, whether sculpting with a hand instrument or using a brush. This is enabled by the non-sticky Bis-MEPP monomer and optimized filler-monomer combination of proprietary FSC and HPC technology (GC data on file).



## Simply universal

G-ænial™ A'CHORD offers the combination of esthetics and strength for both anterior and posterior restorations in one straightforward package.



Courtesy of Dr A. Mak, Australia



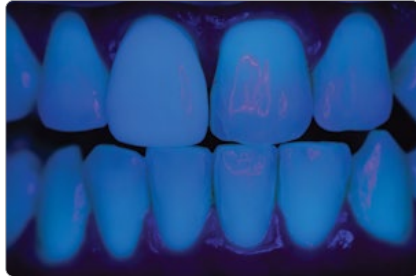
Courtesy of Dr R. Asparuhov, Bulgaria

## A'CHORD Esthetics

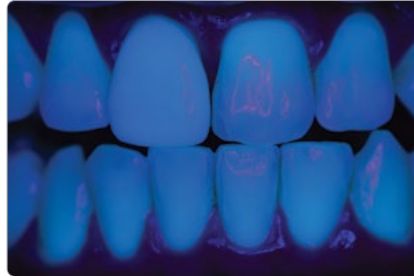
### Natural fluorescence

G-ænia™ A'CHORD creates a **beautifully invisible and naturally fluorescent** end result under any lighting conditions, including black light, giving patients a **truly confident smile**.

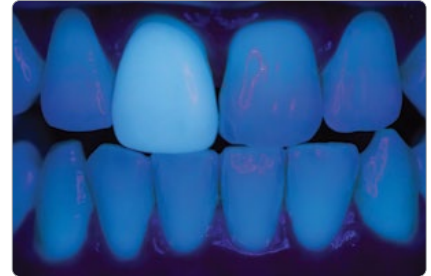
Near-UV 404 nm initial situation



G-ænia™ A'CHORD veneer on tooth 11



Conventional composite veneer on tooth 11



Courtesy of J. Tapia Guadix, Spain

### Long-lasting gloss

G-ænia™ A'CHORD **polishes exceptionally** and **retains a high gloss** thanks to its specialised proprietary technology with uniform nano-filler distribution and high filler load.

Time-saving results: The remarkable high gloss achieved with minimal polishing.



### Invisible esthetics even for extreme challenges

In addition to its 5 core shades G-ænia™ A'CHORD extends its portfolio with 2 cervical shades for elderly patients, 3 opaque for masking discoloration, 2 enamel for life-like translucency and 2 bleach shades for brighter smiles, thus making it possible to create invisible fillings even for extreme challenges.



Courtesy of Dr W. Boujemaa, France



Courtesy of Dr G. Benjamin, Germany

**Syringe  
(1/shade)**

952258  
952259  
952262

**Unitip  
(15/shade)**

952263  
952264

**Kit**

G-ænia™ A'CHORD Layering Kit  
G-ænia™ A'CHORD Core Kit  
G-ænia™ A'CHORD Bleach Kit

**Content**

A2; A3; AO2; AE; JE  
A1; A2; A3; A3,5; A4  
BW, BOW,JE

**Syringe  
2.1ml/4g**

952230  
952231  
952232  
952233  
952234  
952235  
952236  
952238  
952239  
952240  
952242  
952243  
952237  
952241

**Unitip  
15 x 0.16mL**

952244  
952245  
952246  
952247  
952248  
952249  
952250  
952252  
952253  
952254  
952256  
952257  
952251  
952255

**Refill**

G-ænia™ A'CHORD A1  
G-ænia™ A'CHORD A2  
G-ænia™ A'CHORD A3  
G-ænia™ A'CHORD A3.5  
G-ænia™ A'CHORD A4  
G-ænia™ A'CHORD A5  
G-ænia™ A'CHORD A6  
G-ænia™ A'CHORD AO1  
G-ænia™ A'CHORD AO2  
G-ænia™ A'CHORD AO3  
G-ænia™ A'CHORD JE (Junior Enamel)  
G-ænia™ A'CHORD AE (Adult Enamel)  
G-ænia™ A'CHORD BW (Bleach)  
G-ænia™ A'CHORD BOW (Opaque Bleach)

**Category**

Standard  
Standard  
Standard  
Standard  
Standard  
Standard  
Standard  
Opaque  
Opaque  
Opaque  
Enamel  
Enamel  
Bleach  
Bleach



**Related products**



**G-Premio BOND™**  
Universal  
bonding agent



**G-ænia™ Universal  
Injectable**  
High-strength  
Injectable restorative

