

# G-ænial™ Universal Injectable

Universal Light-Cured Radiopaque Injectable Composite

Transform the way  
you work



# Welcome to the future

**G-ænial™ Universal Injectable** is destined to be a game-changer in restorative dentistry. With its unique characteristics it will truly transform the way you work.

World-leading technologies have enabled GC to define a new benchmark composite offering **exceptional strength, unsurpassed polishability** and fantastic, tooth-blending aesthetics.

But you'll be amazed at how it is **injectable and shapeable all at the same time**. It adapts perfectly to the cavity floor, but lets you build, shape and contour while you are injecting – because G-ænial Universal Injectable doesn't slump!

It will also save you time and money because placement is so much faster and because you don't waste any material at all – you only use what is needed.

Try it for yourself and embrace the future! You'll never look back.

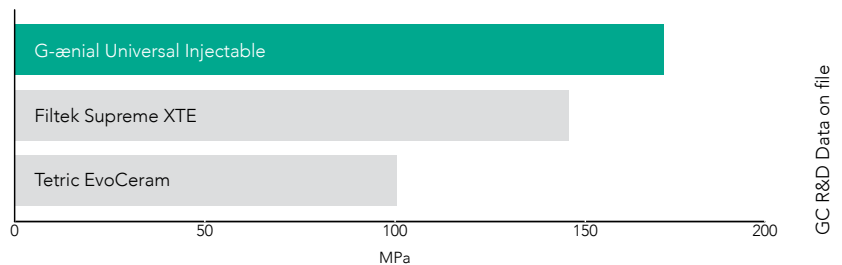


# Our strongest direct restorative ever\*

GC's world-leading filler technologies have allowed us to develop an injectable material that is significantly stronger than most conventional paste composite materials. It's a new paradigm in thinking that a composite with a more flowable consistency is actually your strongest option!

## Exceptional strength and wear resistance

Flexural strength



Filtek Supreme XTE & Tetric EvoCeram are not trademarks of GC.

## Inject, shape and contour all at once

Because **G-ænial™ Universal Injectable** doesn't slump or string, you have total control to adapt, shape and contour as you inject for fast, effortless restorations. It adapts perfectly to the cavity floor and allows you to easily build contours, cusps and even proximal walls.

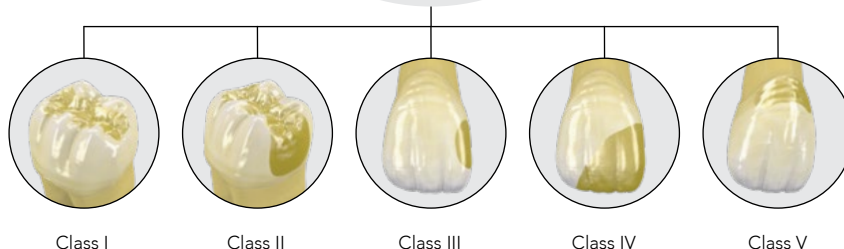
## 3 steps in 1 – shape and contour as you inject



Unsurpassed  
polishability  
with beautiful  
aesthetics

Universal  
application  
for all cavity  
classes

Faster  
placement  
time with  
no wastage

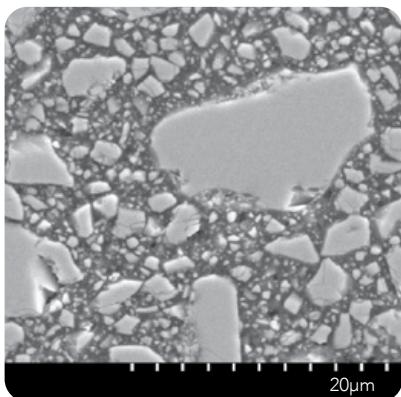
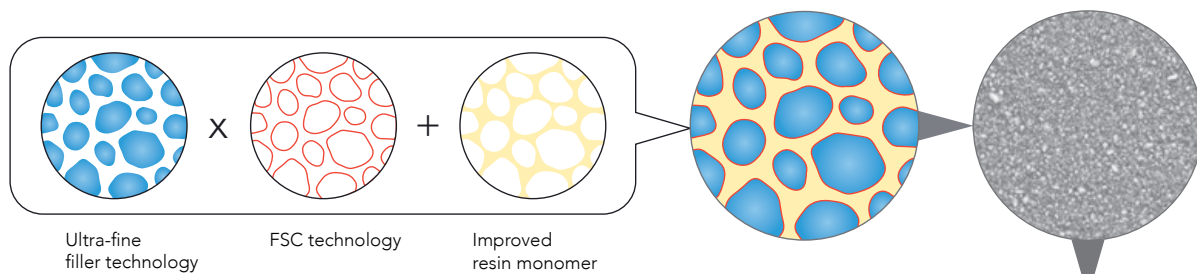


\*based on ISO 4049 testing

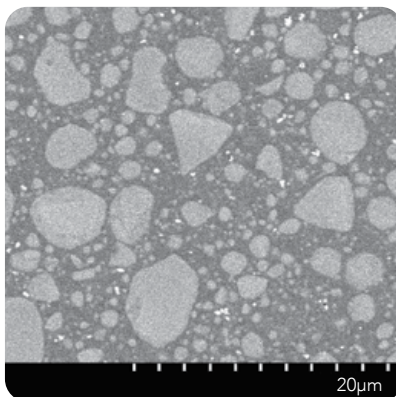
# World-leading innovation and technology

Our latest full-coverage silane coating (FSC) technology makes it possible to homogeneously and densely disperse ultra-fine 150nm fillers in the improved resin monomer matrix giving unparalleled strength, durability and energy-absorbing resilience with high radiopacity – 252% Al.

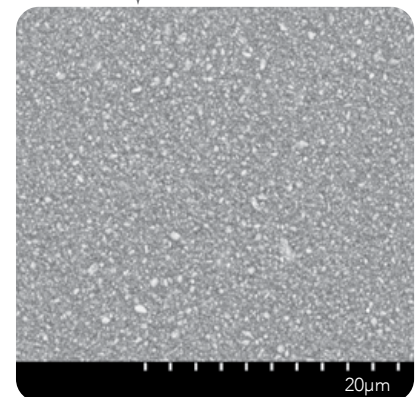
**3 in 1 Technologies** Ultra-fine fillers + Full silane coating + Improved resin monomer



**Micro Hybrid** – Typically contains a range of glass and nano fillers of varying sizes



**Nano composite** – Typically contains spherical nano clusters made up of agglomerated nano fillers of varying sizes



**G-aenial Universal Injectable** – Ultra-fine 150nm homogeneously dispersed glass fillers

## Innovative syringe design delivers with ease and no slumping

With effortless extrusion, our new syringe is a joy to use - and the bendable tips make precise delivery easy.



# Superior strength, wear resistance and polish retention

**G-ænial Universal Injectable's** high-density structure not only provides exceptional strength, but also greater wear resistance, unmatched high polish retention and high resistance to discoloration for long-lasting aesthetics.

## 3 in 1 Benefits

Exceptional strength

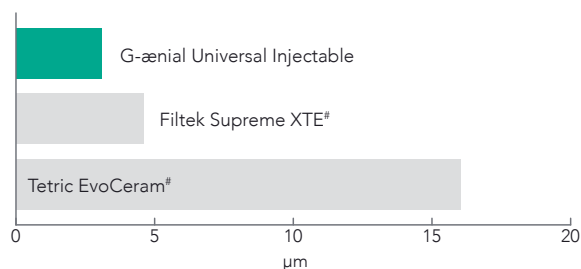


Unsurpassed surface integrity

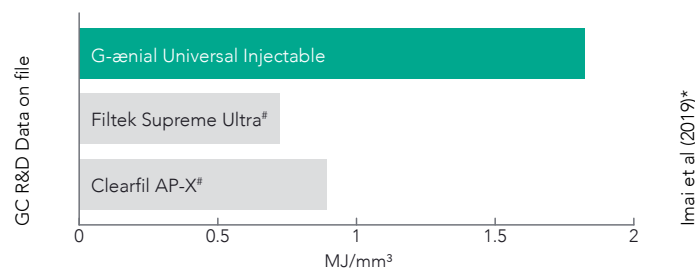


Long lasting aesthetics

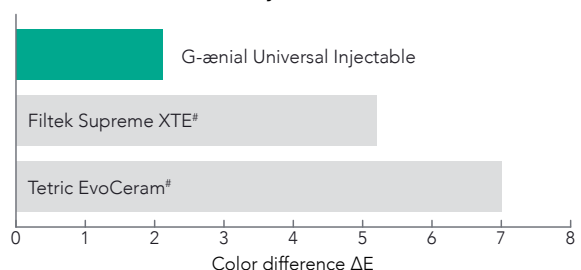
3-body wear



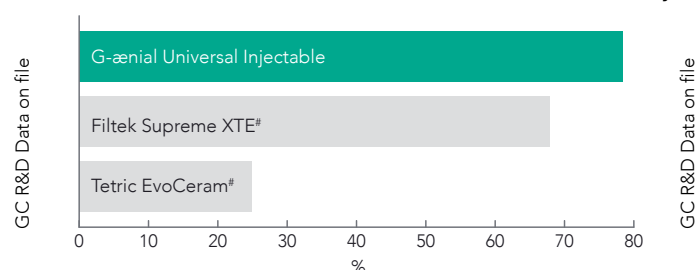
Resilience (Toughness)



Discoloration (at 7 days, 2% coffee solution)



Gloss Retention (After toothbrush wear – 12,000 cycles)



## 3 in 1 Savings

Less time



No waste

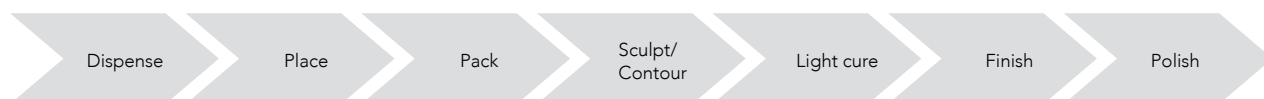


Less stress

## Save time, save material, save stress

With far fewer steps than conventional composite, the time savings for restorations are significant. **G-ænial™ Universal Injectable** also eliminates wastage. You only use what you need! And because **G-ænial™ Universal Injectable** doesn't string or slump the whole process is easier and the end result is less stress in your day.

Conventional pastes



G-ænial Universal Injectable



<sup>#</sup> Not trademarks of GC Corporation

\* Interrelation among the handling, mechanical, and wear properties of the newly developed flowable resin composites. Imai et al. Journal of the Mechanical Behavior of Biomedical Materials 89 (2019) 72–80



# Case Studies

## Class II restoration

Dr. Javier Tapia Guadix – Spain



1. Removal of the old restoration & caries removal.



2. Undercuts can easily be reached thanks to the bendable tips.



3. Building the proximal wall using the enamel shade JE.



4. Removal of the sectional matrix after building the wall.



5. A class I procedure can now be followed; the dentin layer is created with the A4 shade.



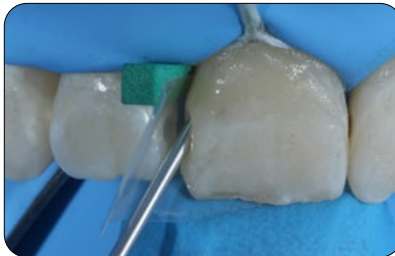
6. Final situation after finishing and polishing of the margins.

## Class III restorations

Dr. Ahmed Al-Jaff, Iraq



1. Initial Class III cavities.



2. Injecting G-aenial™ Universal Injectable (A2).



3. Recall situation showing perfect integration.

## Management of early worn dentition

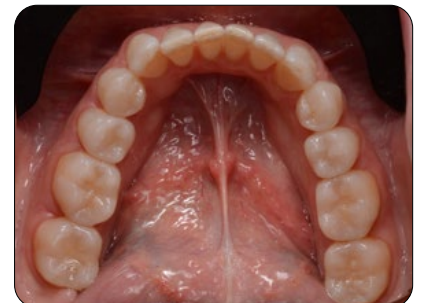
Dr. Anthony Mak – Australia



1. Early wear evident on 40-year old patient needing conservative management.



2. Old composite restorations removed and teeth micro-etched. Build up and restorations on the occlusal surface using alternate teeth technique.



3. Final restorations using a single shade injection technique, shade A1.

## Injection molding technique

Dr. Ali Salehi – France



1. Model with wax-up of the desired tooth shape.



2. An impression tray is filled with EXACLEAR™.



3. The desired shape is copied. The mould can be easily removed from the impression tray and the model.



4. Holes are drilled in the EXACLEAR™ mould through which the composite will be injected.



5. Etching the enamel.



6. Application of the adhesive (G-Premio BOND™).



7. Injection of the composite into the mould. This process is repeated for each tooth.



8. Finishing the vestibular and palatal margins.



9. Finishing the approximal margins.



10. Polishing the composite restorations.



11. Result after polishing.



12. Smile after treatment.

# G-ænial™ Universal Injectable

Ordering information



## G-ænial™ Universal Injectable Syringe Refills

Contains: Two 1.7g (1.0mL) syringes, 10 long dispensing tips and 10 short dispensing tips.

012364 A1	012365 A2	012366 A3	012367 A3.5
012368 A4	012369 B1	012370 B2	012371 CV
012372 CVD	012373 AO1	012374 AO2	012375 AO3
012376 JE	012377 AE	012378 XBW	012379 BW

## G-ænial™ Universal Injectable Unitip Refills

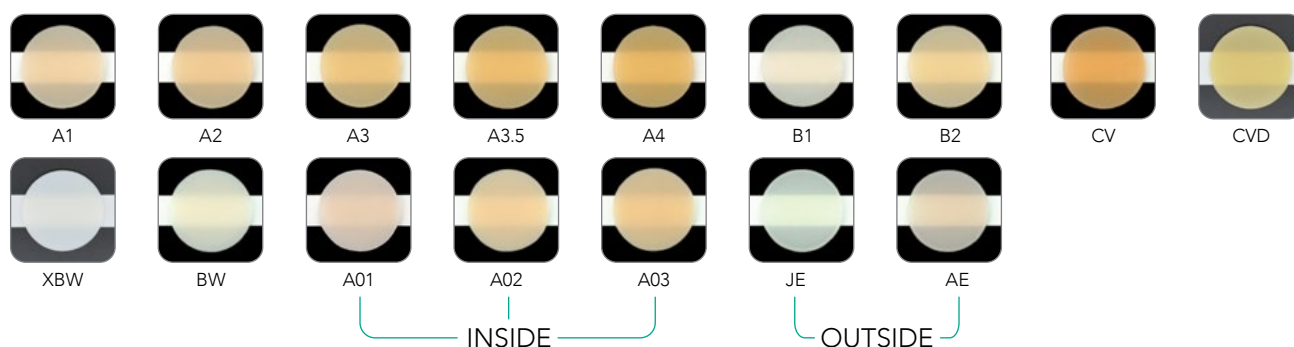
Contains: 15 0.16mL unitips.

012348 A1	012349 A2	012350 A3	012351 A3.5
012352 A4	012353 B1	012354 B2	012355 CV
012356 CVD	012357 AO1	012358 AO2	012359 AO3
012360 JE	012361 AE	012362 XBW	012363 BW

425000 Unitip **APPLIER II**

## Shades:

A1, A2, A3, A3.5, A4, B1, B2, CV, CVD, XBW, BW, AO1, AO2, AO3, JE, AE



## GC America Inc.

3737 West 127th Street

Alsip, IL 60803

800.323.7063

[www.gc.dental/america](http://www.gc.dental/america)

[www.gc.dental/america/training](http://www.gc.dental/america/training)

© 2024 GC America Inc.