

CEMENTATION TECHNIQUE FOR VENEERS

► TRIAL FIT

Remove the temporary restoration and clean thoroughly.



Check the fit and occlusion. As necessary, use G-CEM Try-In Paste.



Remove the restoration and rinse with water.



► PREPARATION OF THE RESTORATION

Prepare the restoration according to the manufacturer's instructions.

► Glass ceramics

Etch with hydrofluoric acid.



Rinse and dry.



► Hybrid ceramics and Composite

Sandblast*
*For CERASMART, alternatively apply hydrofluoric acid.



Blow clean with air syringe. Rinse and dry.



Apply G-Multi PRIMER.



Dry with an air syringe.

► PREPARATION OF TOOTH SURFACE



Rinse and dry the prepared tooth.



Select either Selective Etch or Total Etch technique. Rinse and dry.



Apply G-Premio BOND. Wait 10 seconds.



Dry with a MAXIMUM AIR PRESSURE for 5 seconds.



Light cure for 10 seconds (Halogen/LED 700mW/cm²).

► CEMENTATION



Apply cement directly to the bonding surface of the veneer and/or tooth surface.



Immediately seat onto prepared tooth. Maintain moderate pressure.



Remove excess. Excess can be tack cured for 1-2 seconds.



Light cure each surface/margin for 20 seconds (Halogen/LED 700mW/cm²).



Finish and polish the margins.

G-CEM LinkForce™ TECHNIQUE GUIDE

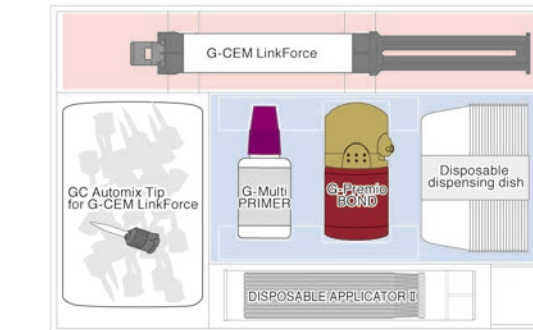


STORAGE CONDITION

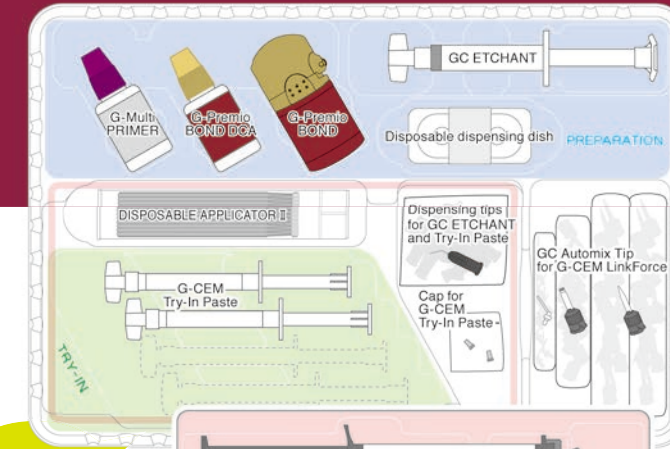
Store the System Kit/Starter Kit or G-CEM LinkForce syringes in refrigerator. Other components can also be stored at room temperature. Refer to respective instructions for use.



LAYOUT of STARTER KIT



LAYOUT of SYSTEM KIT



Empty slots are for storage of additional shades as you like.

The tray can be removed and stored separately in the refrigerator.

CEMENTATION

CEMENTATION TECHNIQUE FOR INLAYS, ONLAYS, CROWNS AND BRIDGES

► TRIAL FIT

Remove the temporary restoration and clean thoroughly.

1



Check the fit and occlusion. As necessary, use G-CEM Try-In Paste.

2



Remove the restoration and rinse with water.

3



► PREPARATION OF THE RESTORATION

Prepare the restoration according to the manufacturer's instructions.

► Glass ceramics

Etch with hydrofluoric acid.

1



Rinse and dry.

2



► Metal, Zirconia, Alumina, Hybrid ceramics and Composite

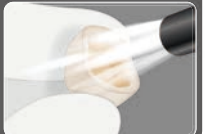
Sandblast*
*For CERASMART, alternatively apply hydrofluoric acid.

1



Blow clean with air syringe. Rinse and dry.

2



Apply G-Multi PRIMER.

Dry with an air syringe.

3



4

► PREPARATION OF TOOTH SURFACE



Rinse and dry the prepared tooth.

5



Select from three etching techniques: self etching, selective etching or total etching. Rinse and dry.

6

► CEMENTATION



Extrude G-CEM LinkForce directly into the restoration.

10



Immediately seat onto prepared tooth/abutment. Maintain moderate pressure.

11



Remove excess while maintaining moderate pressure. Excess can be tack cured for 1-2 seconds for an easier excess removal.

12



Light cure each surface/margin for 20 seconds (Halogen/LED 700mW/cm²).

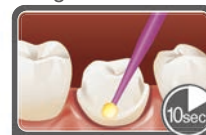
13



If light curing is not used, let it set for 4 minutes after seating. Finish and polish margins if necessary.

14

► Light-cure mode



Apply G-Premio BOND. Wait 10 seconds.

7



Dry with a MAXIMUM AIR PRESSURE for 5 seconds.

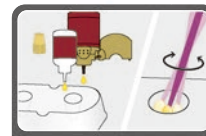
8



Light cure for 10 seconds (Halogen/LED 700mW/cm²).

9

► Alternative dual-cure mode



Mix G-Premio BOND and DCA in a 1:1 ratio.

7



Apply the mixture. Wait 20 seconds.

8



Dry with a MAXIMUM AIR PRESSURE for 5 seconds.

9

CEMENTATION TECHNIQUE FOR POSTS AND CORES

► PREPARATION OF THE RESTORATION

Prepare the restoration according to the manufacturer's instructions.

Clean with alcohol.

1



Apply G-Multi PRIMER.

2



Dry with an air syringe.

3



► PREPARATION OF POST SPACE



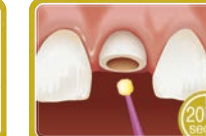
Clean the root canal with NaClO or EDTA. Rinse and thoroughly dry.

4



Mix G-Premio BOND and DCA in a 1:1 ratio.

5



Apply the mixture to the post space and leave for 20 seconds.

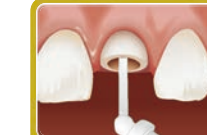
6



Dry with a MAXIMUM AIR PRESSURE for 5 seconds. Remove any excess bonding agent using paper points.

7

► CEMENTATION



Extrude G-CEM LinkForce into the post space.

8



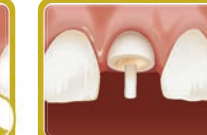
Insert post immediately into the post space. Remove excess cement.

9



Light cure each surface/margin for 20 seconds (Halogen/LED 700mW/cm²).

10



Leave the material undisturbed for 4 minutes after inserting the post. Continue to build up.

11