

# GC Fuji IX GP® Family

Self-Cured Packable Glass Ionomer Restorative

A metamorphic change  
in glass ionomers



Since 1921

100 years of Quality in Dental



# Break Through

The benefits of glass ionomer restoratives have been known for years – superior flexibility and esthetics, outstanding fluoride protection, strong ionic bond and simple technique – and GC America has led the way in offering premier packable posterior, light-cured and metal-reinforced ionomers for virtually any restoration. Now, GC America has another breakthrough.

**GC Fuji IX GP® EXTRA** is an innovative, new ionomer that is the perfect complement to the current GC Fuji family of bioactive materials that restores and protects as part of GC America's new modern approach to caries management, Minimum Intervention (MI).



## Minimum Intervention (MI)

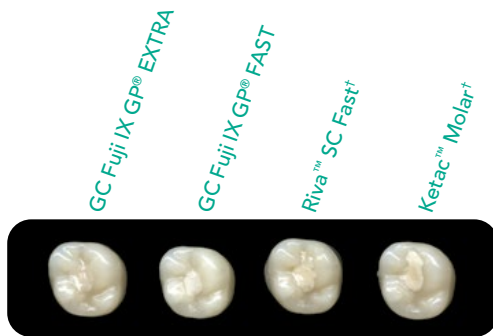
In contrast to the traditional 'surgical' approach of 'drilling and filling,' MI seeks to do the following:

- Identify and assess any potential caries risk factors early
- Prevent or minimize these risk factors to keep caries from occurring
- Restore the tooth with bioactive materials that preserve natural tooth structure

To implement Minimum Intervention effectively, all three elements must be fully integrated into your patient treatment plans.

# Fly Higher

GC America's new **GC Fuji IX GP® EXTRA** features the same excellent handling and high physical properties of their dynamic GC Fuji IX GP® REGULAR SET and GC Fuji IX GP® FAST, but contains a next-generation glass filler, SmartGlass™, that elicits higher translucency, fluoride release, reactivity and a faster setting time. The unique optical properties of the new filler have also allowed GC America to create a new, lighter shade. B1 is ideal for children and patients who may have undertaken whitening procedures.

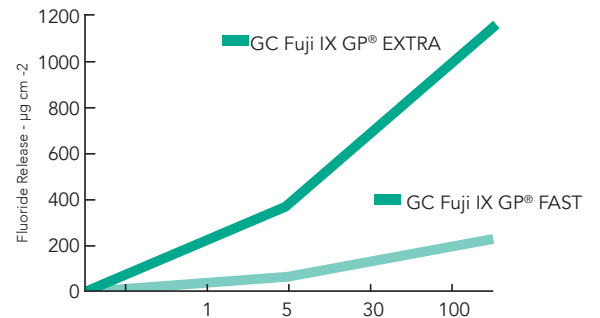


## EXTRA Shade Matching Capability

Higher translucency allows improved esthetics and shade matching (available in shades A1, A2, A3, A3.5, B2, B3, C4 and the new B1 shade).

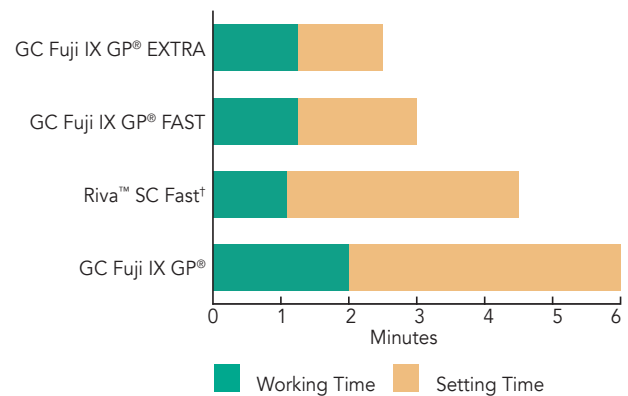
Packable GC Fuji IX GP® EXTRA is the easy-to-use, handle and place fluoride-releasing alternative to expensive compomers, composites and amalgam. Its excellent surface hardness and wear resistance make it ideal for:

- Geriatric and pediatric restorations
- Caries control restorations
- Final restorations (avoid high-stress areas)
- Core build-up and dentin substitute in sandwich technique
- Emergency restorative (I.R.M.)
- Long-term temporary restoration



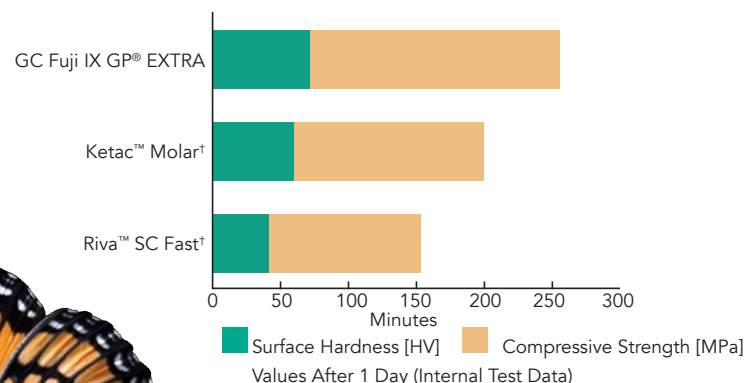
## EXTRA High Fluoride Release

Six times higher than current GC Fuji IX GP® FAST for even better protection against continuing caries.



## EXTRA Fast Setting Time

Finishing and polishing can be started only 2 1/2 minutes after the start of mixing (the fastest setting glass ionomer on the market today).



## EXTRA Strong Performance

Robust physical properties maximize durability for optimum performance.

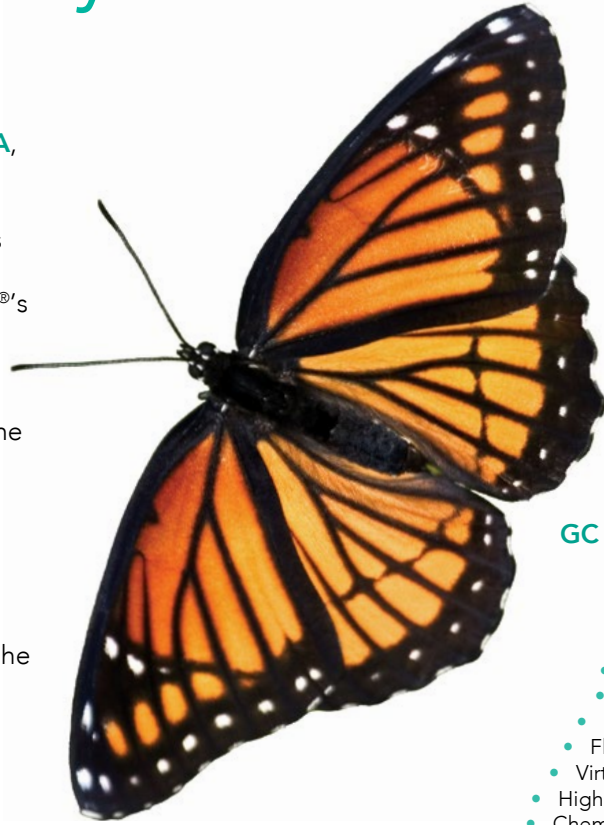
# GC Fuji IX GP® Family

The GC Fuji family of restoratives, **GC Fuji IX GP® EXTRA**, **GC Fuji IX GP® FAST** and **GC Fuji IX GP®**, offers unsurpassed wear resistance and durability in a glass ionomer. The non-sticky, packable restorative mix adapts readily to internal aspects of the preparation and will not slump. Dental dam isolation is optional, as GC Fuji IX GP®'s chemistry allows bonding to moist, conditioned enamel and dentin. GC Fuji IX GP® is useful as a caries-control restorative, for long-term provisionalization, minimally invasive measures and as a high-strength foundation in the sandwich technique.

Specifically designed for conservative cavity preparation, such as air abrasion, all GC Fuji IX GP®'s bond directly to the tooth structure without need for undercuts or timeconsuming bonding agents. Cutting a much smaller prep reduces chair time and the trauma associated with the handpiece. Just condition, place, pack and contour.



GC Fuji IX GP® Prep    Amalgam Prep    Composite Prep



## GC Fuji IX GP®

- Packable
- Stabilizing
- Non-sticky
- Radiopaque
- Less invasive
- Biocompatible
- Fluoride release
- Virtually insoluble
- Highly compressive
- Chemically bonding
- Fast prep/chair time

## GC Fuji IX GP® EXTRA

## GC Fuji IX GP® FAST

## GC Fuji IX GP®

Condition		GC Fuji IX GP® EXTRA	GC Fuji IX GP® FAST	GC Fuji IX GP®
Mixing Time (seconds)	23° C, 73.4° F	10 sec.	10 sec.	10 sec.
Working Time (min:sec)	23° C, 73.4° F	1 min. 15 sec.	1 min. 15 sec.	2 min.
Final Finishing Commencing Time (min:sec)	37° C, 98.6° F after starting mix	2 min. 30 sec.	3 min.	6 min.
Surface Hardness (Hv)	After 1 day	72(5)	74(3)	74(3)
Compressive Strength (MPa)	After 1 day After 1 week	255(14) 265(15)	268(10) 274(11)	220(9) 230(14)
Modulus of Elasticity (GPa)	After 1 day	7.8(0.1)	8.6(0.3)	8.3(0.5)
Diametral Tensile Strength (MPa)	After 1 day	23(1)	23(2)	22(2)
Flexural Strength (MPa)	After 1 day	25(1)	26(3)	26(4)
Solubility (%)	Distilled Water 1mmol/L Lactic Acid	0.08 0.32	0.02 0.21	0.02 0.21
Radiopacity (mm)		2.3(0.2)	3.7(0.3)	3.7(0.3)
Bonding Strength (MPa) with Cavity Conditioner	To Bovine Enamel, After 1 day  6.4(2.2) 6.9(1.6) 5.9(1.7) To Bovine Dentin, After 1 day	6.4(2.2)  6.0(1.4)	6.9(1.6)  5.8(2.2)	5.9(1.7)  4.4(1.6)

# Fly Free



Available in premeasured capsules or hand-mix powder liquid (GC Fuji IX GP® only), the GC Fuji family of glass ionomers is the most versatile general-purpose posterior restorative on the market today.



Prepare the cavity.

GC CAVITY CONDITIONER, then rinse and dry. (Do not desiccate.)

Place mixed GC Fuji IX GP®, pack, condense and carve to shape.

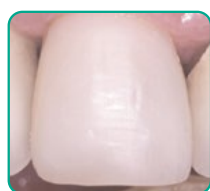
Seal the surface with light-cured GC Fuji COAT™ LC or self-cured GC Fuji VARNISH™.

Final finish under water spray, then apply final coat of GC Fuji VARNISH™, GC Fuji COAT™ LC or G-COAT PLUS™.

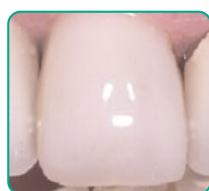
**Clinical Tip:** For maximum protection, apply a final coat of GC's self-adhesive, light-cured G-COAT PLUS™. Its nanofillers increase wear resistance while providing an esthetic high-gloss coating.

## G-COAT PLUS™

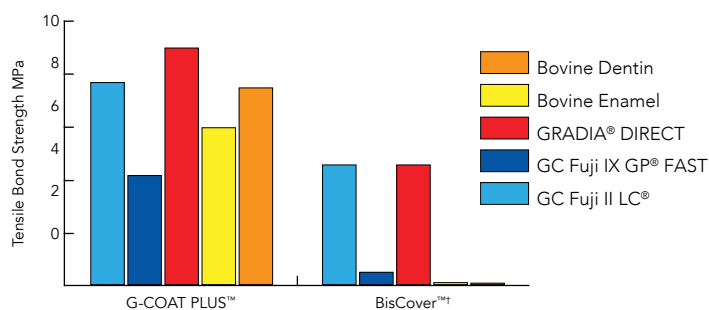
G-COAT PLUS™ is the only light-cured, protective clear coating formulated with adhesive monomer and nanofillers. Formulated for glass ionomers, composite resins and provisional materials, G-COAT PLUS™ locks on fast, providing lasting beauty and wear resistance. One thin coat protects margins, prevents staining and provides a high gloss comparable to intense polishing. G-COAT PLUS™ is compatible with halogen and LED curing lights.



Composite restoration after polishing



Final coating using G-COAT PLUS™



The exclusive adhesive monomer in G-COAT PLUS™ results in superior adhesion to many surfaces.



# GC Fuji IX GP® Family

## Ordering Information

### GC Fuji IX GP® EXTRA Capsule Assortment Starter Package

Contains: Quantity of 48 refill capsules (10 of each Shade: A2, A3 and A3.5; 9 of each Shade: B1 and B3; 0.14 mL per capsule), 1 GC CAPSULE APPLIER III, 1 CAVITY CONDITIONER and 1 GC Fuji COAT™ LC.

425050 US / 442050 CA

### GC Fuji IX GP® EXTRA Capsule Refill Packages

Contains: Quantity of 48 capsules (0.14 mL per capsule).

425041 US / 442041 CA Shade A1

425042 US / 442042 CA Shade A2

425043 US / 442043 CA Shade A3

425044 US / 442044 CA Shade A3.5

425045 US / 442045 CA Shade B1

425046 US / 442046 CA Shade B2

425047 US / 442047 CA Shade B3

425048 US / 442048 CA Shade C4

425040 US / 442040 CA Assorted (Assorted Shades - 10 each of A2, A3, A3.5, B1 and B3)

### GC Fuji IX GP® FAST Capsule Assortment Starter Package

Contains: Quantity of 48 refill capsules (10 of each Shade: A2, A3 and A3.5; 9 of each Shade: B2 and B3; 0.14 mL per capsule), 1 GC CAPSULE APPLIER III, 1 CAVITY CONDITIONER and 1 GC Fuji COAT™ LC.

425070 US / 442070 CA

### GC Fuji IX GP® FAST Capsule Refill Packages

Contains: Quantity of 48 capsules (0.14 mL per capsule).

425066 US / 442066 CA Shade A1

425061 US / 442061 CA Shade A2

425062 US / 442062 CA Shade A3

425063 US / 442063 CA Shade A3.5

425064 US / 442064 CA Shade B2

425065 US / 442065 CA Shade B3

425060 US / 442060 CA Assorted (Assorted Shades - 10 each of A2, A3, A3.5, B2 and B3)

### GC Fuji IX GP® Powder Refill (A2)

Contains: One (15 g) refill powder bottle (A2).

000158 15g

### GC Fuji IX GP® Liquid Refill

Contains: One (6.4 mL) refill liquid bottle.

000164 6.4mL

### GC Fuji IX GP® Capsule Assortment Starter Package

Contains: Quantity of 48 capsules (10 of each Shade: A2, A3 and A3.5; 9 of each Shade: B2 and B3; 0.14 mL per capsule), 1 GC CAPSULE APPLIER III, 1 CAVITY CONDITIONER and 1 GC Fuji COAT™ LC.

425090 US / 442090 CA

### GC Fuji IX GP® Capsule Refill Packages

Contains: Quantity of 48 capsules of the same shade (0.14 mL per capsule).

425081 US / 442081 CA Shade A2

425082 US / 442082 CA Shade A3

425083 US / 442083 CA Shade A3.5

425084 US / 442084 CA Shade B2

425085 US / 442085 CA Shade B3

425080 US / 442080 CA Assorted (Assorted Shades - 10 each of A2, A3, A3.5, B2 and B3)

### GC Fuji IX GP® Powder/Liquid Starter Package

Contains: Package of Powder - Liquid (1:1), 1 CAVITY CONDITIONER and 1 GC Fuji COAT™ LC.

439901

### GC Fuji IX GP® Powder/Liquid Intro 1:1 Package

Contains: One (15 g) powder (A2), 1 (6.4 mL) bottle of liquid and 1 mixing pad.

000152

### GC CAPSULE APPLIER III

437555

### GC CAPSULE APPLIER V

013764

### GC CAVITY CONDITIONER

000110 5.7mL bottle

### GC Fuji COAT™ LC

000176 5.2mL bottle

### GC Fuji VARNISH™

000026 10g bottle

### G-COAT PLUS™ Esthetic Sealer

Contains: 4mL bottle, Disposable Dispensing Dish (20), Micro Tip Applicator (50) and Applicator Holder (1).

002583

#### GC America Inc.

3737 West 127th Street

Alsip, IL 60803

800.323.7063

www.gc.dental/america

© 2026 GC America Inc.

†Riva™ SC Fast is a trademark of SDI. Ketac™ Molar is a trademark of 3M. BisCover™ is a trademark of Bisco, Inc.

