

initial LRF Block

Leucite-Reinforced Glass Ceramic CAD/CAM Block

Fast, strong, beautiful



Since 1921
100 years of Quality in Dental



GC Initial® LRF Block

The GC Initial® LRF Block from GC America is an exceptionally aesthetic and strong leucite-reinforced feldspar CAD/CAM block. It has a fast milling time, doesn't require firing and is easily finished saving time without compromising strength and beauty.

This innovative new leucite-reinforced feldspar ceramic block offers the highest aesthetics of traditional feldspathic porcelain with added flexural strength by adding the perfect combination of leucite ceramic. Leucite reinforcement of glass ceramic offers increased flexural strength and resistance against possible crack formations and chipping at the margins.

The particle size and particle distribution of the leucite crystals contribute to the aesthetic appearance as they reflect the incident light in nature the same way. These ceramic particles are homogeneously distributed and dense providing your patients restorations that are not only beautiful and aesthetic, but strong and durable as well.

Fast and Easy: Just Mill, Polish, and Cement

- High density - less risk of cracking and chipping
- Extremely smooth surfaces after milling
- Easy-to-polish or glaze with dedicated glaze paste
- Chameleon effect offers optimal color integration



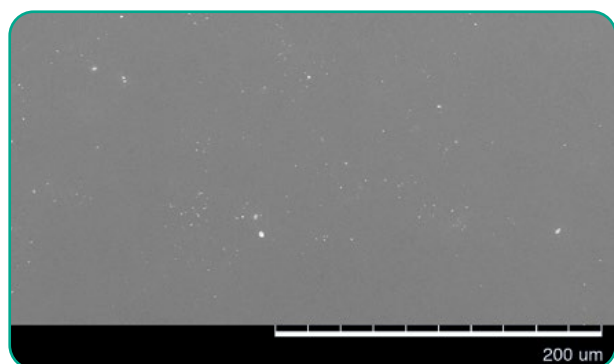
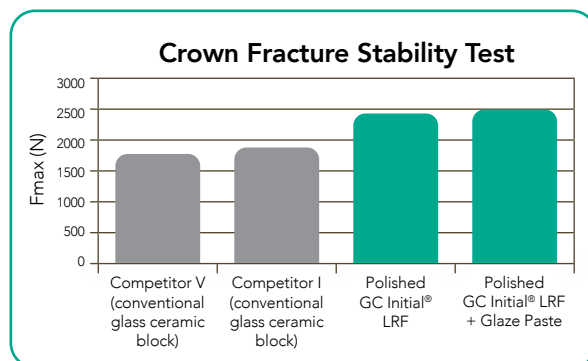
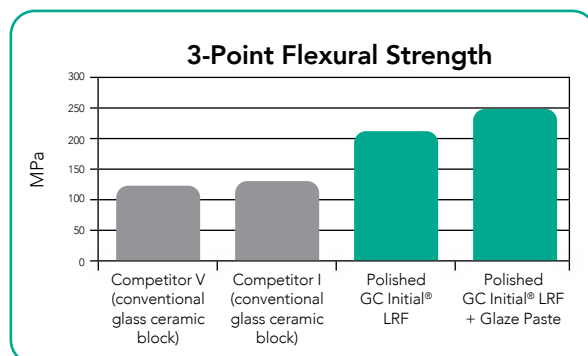
Physical Properties

Best of Both Worlds

- Combines qualities of high and low-strength CAD/CAM ceramic blocks
- GC Initial® LRF is stronger than traditional feldspar glass ceramic blocks

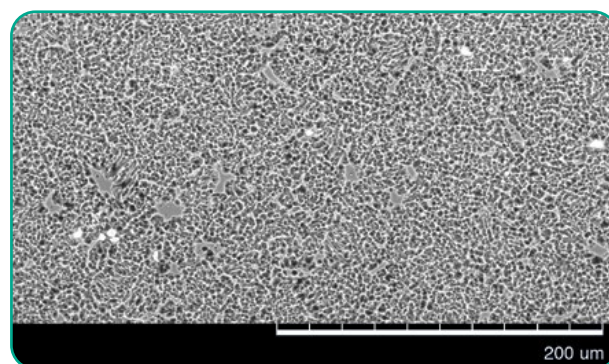
Stability and Strength

- Highest fracture stability & flexural strength in its category, whether polished or glazed
- High density block (less risk of chipping)



SEM Image 1

Milled and polished, shows a highly compacted and dense glass ceramic surface.



SEM Image 2

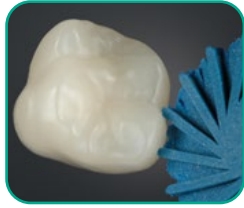
Milled and etched, shows a perfectly crystallized dense micro-structure.

Excellent Surface Quality

- Extremely smooth surface right after milling
- No firing necessary to get outstanding physical properties



Aesthetics



Excellent Polishing Capabilities

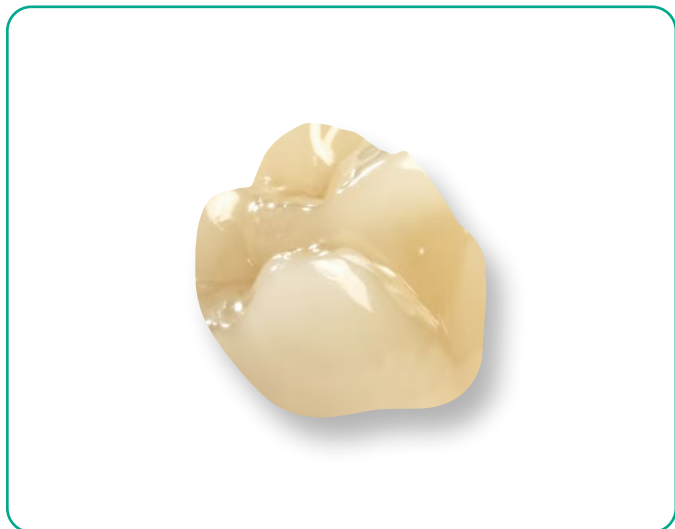
- Easy polishing with conventional manual and mechanical tools
- Manual polishing quickly produces excellent gloss and aesthetics



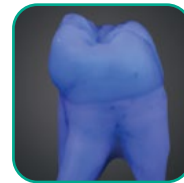
Color

Excellent Color Capabilities

- Natural chameleon effect for optimal color integration
- Natural light dynamics with perfectly balanced translucency, fluorescence and opalescence



Opalescence



Fluorescence



Translucency



GC Initial® LRF A2



GC Initial® LRF A2



GC Initial® LRF A2



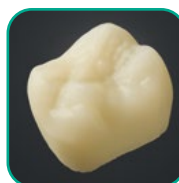
Competitor V A2



Competitor V A2



Competitor V A2



Competitor I A2



Competitor I A2



Competitor I A2

Indications & Shades

Indications

- Single anterior and posterior crowns - partial and full
- Inlays/Onlays
- Veneers
- Endo crowns on molars

Shades

HIGH TRANSLUCENCY (HT)	A1 HT, A2 HT, A3 HT, A3.5 HT, B1 HT
LOW TRANSLUCENCY (LT)	A1 LT, A2 LT, A3 LT, A3.5 LT, B1 LT
BLEACH SHADE:	BL

Indications available in 12, 14, and 14L



Clinical Case



First upper molar showing a defective amalgam restoration. Decision to create a ceramic only directly in CAD/CAM.



Cavity preparation following an all ceramic criteria.



GC Initial® LRF Block just after milling.



Contact, occlusion, and anatomy are finalized intra-orally.



Luting using G-CEM LinkForce®.
Clinical case courtesy of M. Quini, Spain



Final result after glazing (not characterized in this case).

initial[®] LRF Block

Ordering Information

GC Initial[®] LRF Block - CEREC^{®†}

5-block packages

876501 12 A1 HT	876502 14 A1 HT	876503 14L A1 HT
876507 12 A2 HT	876508 14 A2 HT	876509 14L A2 HT
876513 12 A3 HT	876514 14 A3 HT	876515 14L A3 HT
876519 12 A3.5 HT	876520 14 A3.5 HT	876521 14L A3.5 HT
876525 12 B1 HT	876526 14 B1 HT	876527 14L B1 HT
876504 12 A1 LT	876505 14 A1 LT	876506 14L A1 LT
876510 12 A2 LT	876511 14 A2 LT	876512 14L A2 LT
876516 12 A3 LT	876517 14 A3 LT	876518 14L A3 LT
876522 12 A3.5 LT	876523 14 A3.5 LT	876524 14L A3.5 LT
876528 12 B1 LT	876529 14 B1 LT	876530 14L B1 LT
876531 12 Bleach	876532 14 Bleach	876533 14L Bleach



GC Initial[®] LRF Block - Universal

5-block packages

876551 12 A1 HT	876552 14 A1 HT	876553 14L A1 HT
876557 12 A2 HT	876558 14 A2 HT	876559 14L A2 HT
876563 12 A3 HT	876564 14 A3 HT	876565 14L A3 HT
876569 12 A3.5 HT	876570 14 A3.5 HT	876571 14L A3.5 HT
876575 12 B1 HT	876576 14 B1 HT	876577 14L B1 HT
876554 12 A1 LT	876555 14 A1 LT	876556 14L A1 LT
876560 12 A2 LT	876561 14 A2 LT	876562 14L A2 LT
876566 12 A3 LT	876567 14 A3 LT	876568 14L A3 LT
876572 12 A3.5 LT	876573 14 A3.5 LT	876574 14L A3.5 LT
876578 12 B1 LT	876579 14 B1 LT	876580 14L B1 LT
876581 12 Bleach	876582 14 Bleach	876583 14L Bleach



GC Initial[®] LRF Glaze Paste & Liquid

876590 Glaze Paste and Liquid

G-CEM LinkForce[®]

009541 System Kit
010118 Starter Kit A2
010119 Starter Kit Translucent

GC Automix Tips

002902 GC Automix Tips
002903 GC Automix Tips for Endo

G-Premio BOND[™]

009552 Dual Care Activator (DCA)
009275 Kit
009276 Unit Dose
009277 Bottle

GC America Inc.

3737 West 127th Street
Alsip, IL 60803
800.323.7063
www.gc.dental/america

© 2026 GC America Inc.

†CEREC[®] is a registered trademark of Dentsply Sirona.

G-CEM LinkForce[®] Cement Refill

010120 A2
010121 Translucent
010122 Opaque
010123 Bleach

G-CEM LinkForce[®] Try-In Paste

009548 A2
009549 Translucent
009550 Opaque
009551 Bleach

G-Multi PRIMER[™]

009553 5mL Bottle