
SUPER-SOFT™

RESILIENT DENTURE LINER

SUPER-SOFT can be successfully used with any denture resin presently available. It can be processed as a reline on an existing denture or with a new denture. The powder-liquid proportions recommended will produce a lining of "average" softness.

If a **softer** lining is desired, use more liquid.

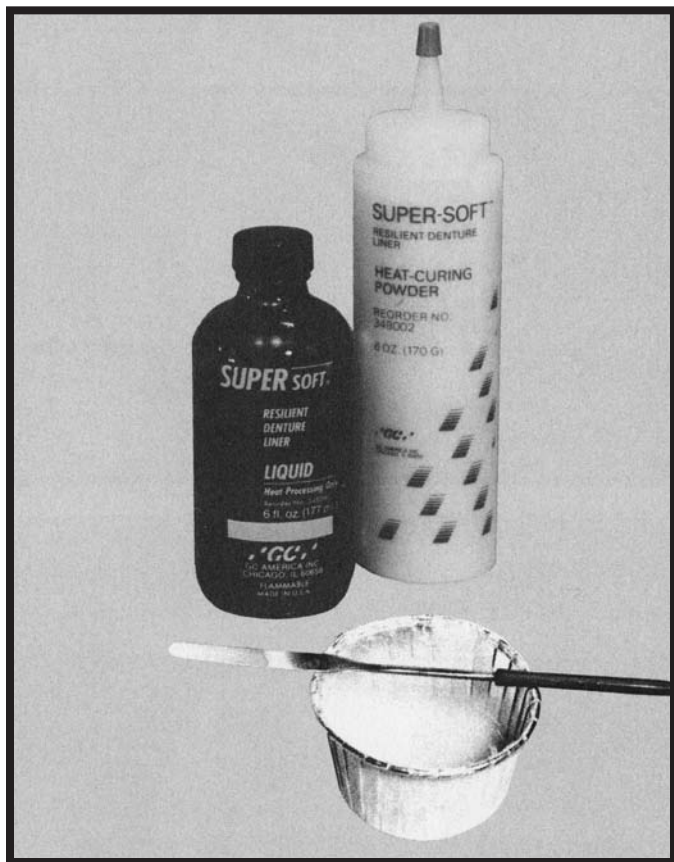
If a **firmer** lining is desired, use less.

Instructions

Relining existing dentures . . .

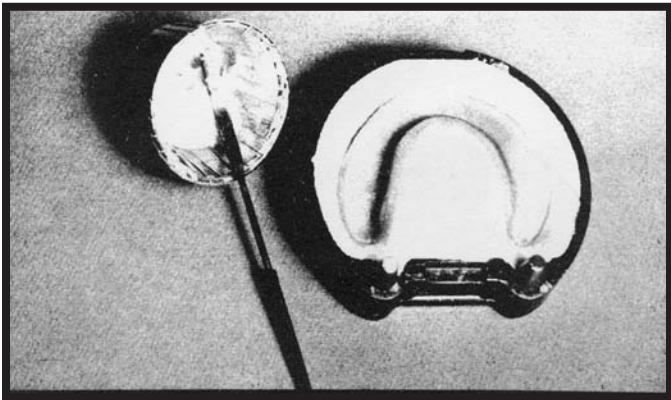
PREPARATIONS: After the denture is flaked and separated, roughen with a sharp bur the peripheral border and tissue surface of the denture base. Remove sufficient material to provide a SUPER-SOFT lining at least 1 mm thick if possible. Clean and dry the denture base thoroughly. Do not flush out the case with monomer, or use detergents, or cleaning solvents.

Place the top half of the flask in warm water (160° F.) for a few minutes. Remove the excess water and paint COE-SEP™ liberally on the cast to prevent SUPER-SOFT from adhering to the stone. Allow the COE-SEP to dry to a glossy surface.

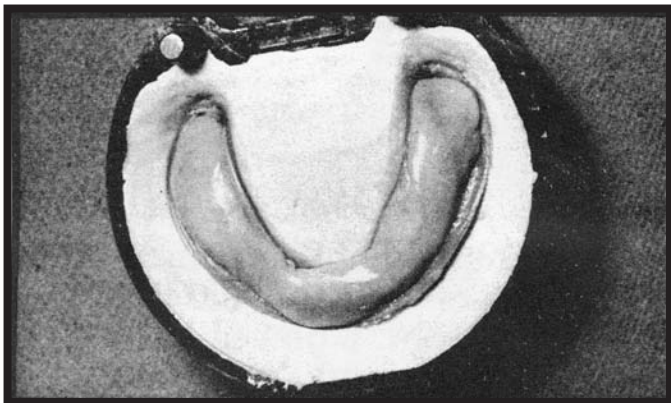


MIXING: Mix SUPER-SOFT in approximate proportions of 4 ml of liquid to one red measure (weight: 5 gm) of powder. More liquid will produce a softer liner. Pour the liquid into a mixing cup. Slowly add the powder.

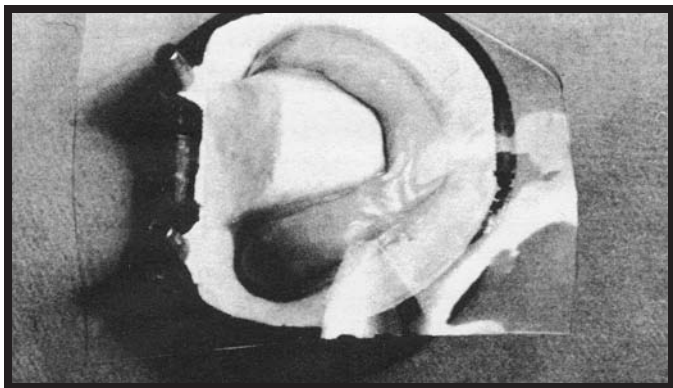
Stir the mixture thoroughly for 20 to 30 seconds.



PACKING: When the mixture is no longer tacky and doesn't stick to the sides of the cup, it will be ready to

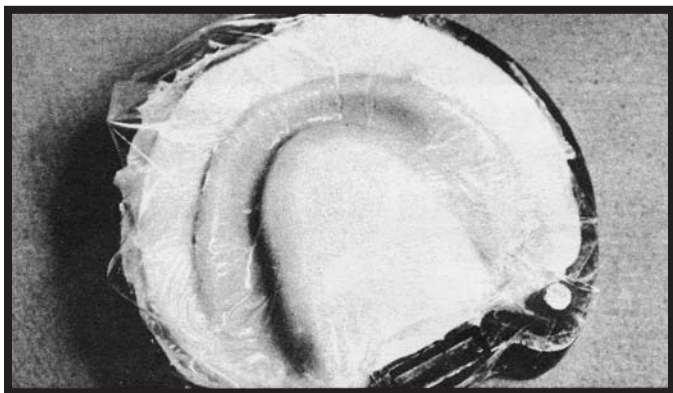


pack. This usually is 30 to 40 minutes after mixing. Cover the resin with a



sheet of dry polyethylene.

Close the flask slowly to distribute SUPER-SOFT evenly.

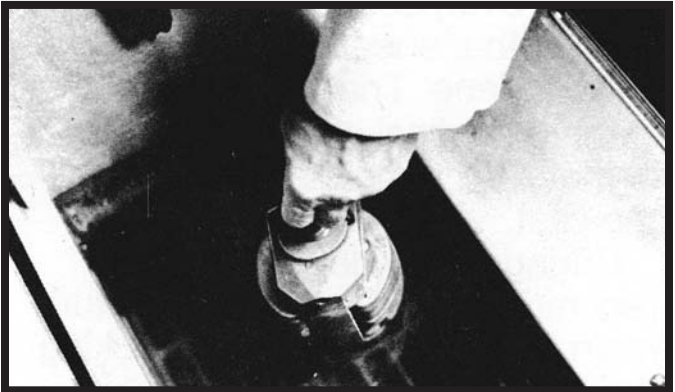


Open flask carefully and examine the denture. The denture should be covered completely with SUPER-SOFT. If an area has not been covered sufficiently because of lack of resin,

add more resin to fill this void. Repeat the trial packs until the desired flash develops at the periphery.



Before final closure, remove the polyethylene sheet and trim the flash within the flask.



CURING: Place the flasked denture in hot water (165° F.) for approximately 30 minutes. Over the period of the next 30 minutes, slowly increase the temperature of the water to boiling. Boil for 10 minutes. If you prefer, the denture may be cured for 6 hours, or overnight, in water at 165° F.

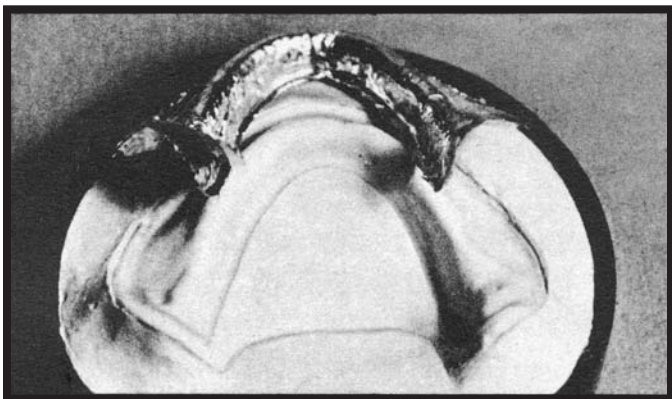
FINISHING AND POLISHING: Place the denture in ice water for 5 minutes prior to polishing. Keep the denture wet and cold during the polishing procedures. This will provide a firmer surface for polishing. At room temperature, SUPER-SOFT will gradually recover its resiliency. At mouth temperature, it will be more resilient.

Processing SUPER-SOFT with a new denture . . .

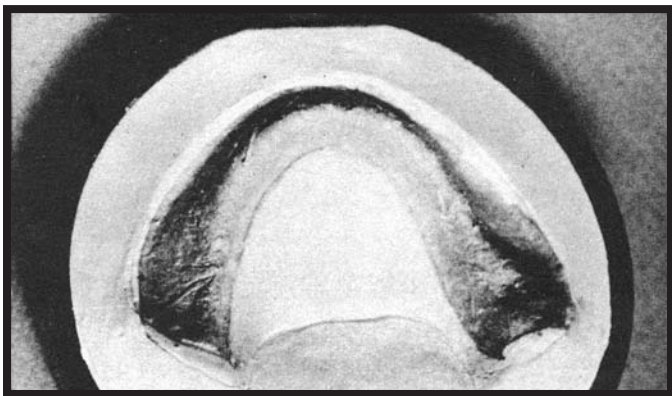
Wax-up and flask the denture in your usual manner.

Separate the flask and boil out the

wax with fresh, clean water.
Detergents should not be used.
While the flask is still warm, paint the
portion containing the denture cavity
with COE-SEP.



Carefully adapt several sheets of
heavy metal foil to the cast to produce
a lining of SUPER-SOFT at least



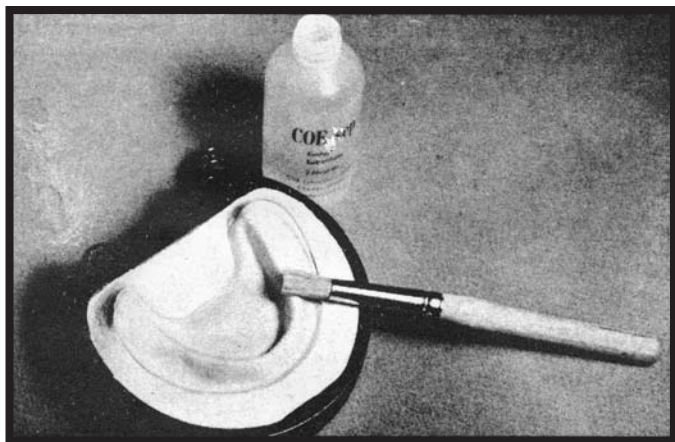
1 mm thick.

Spacer sheet (dampen to adapt) can also be used.

Prepare the denture resin and slightly overpack the flask. Cover the resin with a sheet of dry polyethylene. Trial pack in the usual manner. At final closure the spacer of metal foil should still be on the cast.

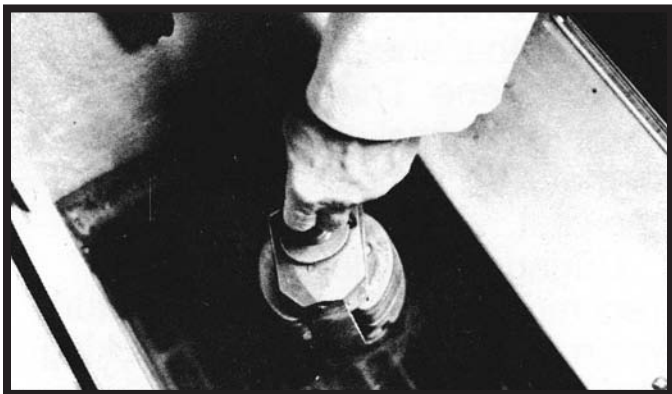
Curing of the denture resin is recommended. The cured denture resin gives a firm base for packing the SUPER-SOFT.

See sections MIXING (p.3) and CURING (p.7). Remove, open flask.

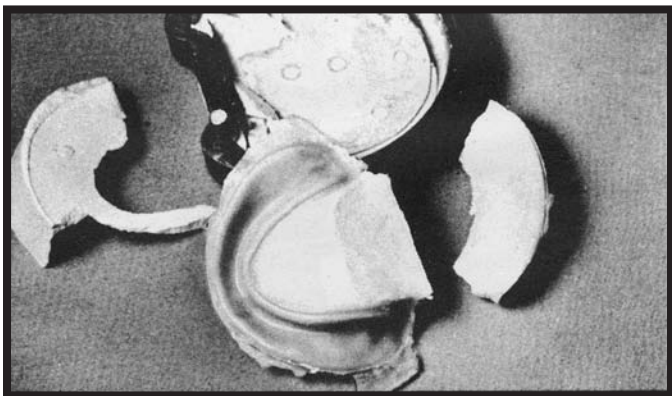


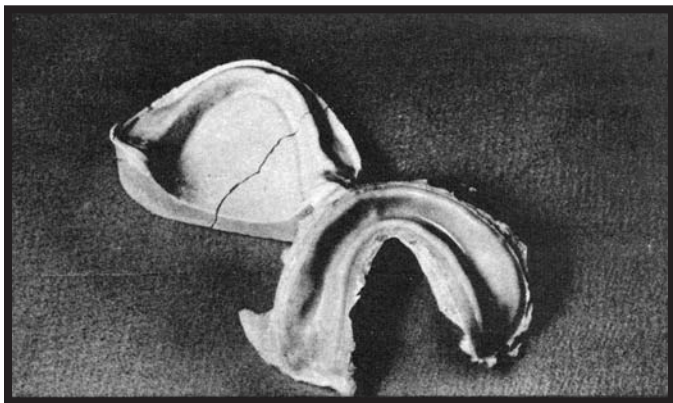
Remove the spacer.

Apply COE-SEP liberally to the cast.
Pack SUPER-SOFT.



Place the flasketed denture in the
curing tank for 6 hours or overnight
with the water at 165° F.





FINISHING AND POLISHING: Place the denture in ice water for 5 minutes prior to polishing. Keep the denture wet and cold during the polishing procedures. This will provide a firmer surface for polishing. At room temperature, SUPER-SOFT will gradually recover its resiliency. At mouth temperature, it will be more resilient.

NOTE: Sensitivity to some of the components of this product has been reported. The reported sensitivity varies from simple dermal redness, to rash, swelling and nausea and/or vomiting. The practitioner should assure, **prior to use**, no such sensitivity to this product is present in the intended patient.

If you are not already using them, don't forget to try resins from the new family of **NATURE-CRYL™** Denture Base Materials.

NATURE-CRYL™ HI-PLUS-Superior Impact Strength, Heat-cured dough packed system

NATURE-CRYL™ HI-20ET-High Impact Strength with Extended working Time & 20 minute boiling water cure option

NATURE-CRYL™ POUR-Pour/Reline and Repair Resin (Self-cured)

NATURE-CRYL™ MC-Microwave Cured Denture Base Material System

All materials are available in the **NATURE-CRYL SHADE SYSTEM** featuring the following esthetic and nature tissue colors.

COE LIGHT FIBERED +	ORIGINAL
COE-LOR™ MILD*	LIGHT
COE-LOR™ MODERATE*	LIGHT REDDISH PINK
COE-LOR™ HEAVY*	

*ETHNIC SHADES TO MIMIC HEAVILY PIGMENTED TISSUE.



GC AMERICA INC.
3737 WEST 127TH STREET
ALSIP, ILLINOIS 60803