

G-ÆNIAL A'CHORD

SIMPLICITY, AESTHETICS AND PERFORMANCE IN YOUR HANDS

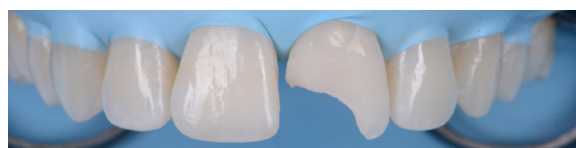


With more than 100 years of experience in serving dentistry and over one billion composite restorations worldwide, GC introduces its proprietary High-performance Pulverised Cerasmart (HPC) filler and Full Coverage Silane Coating (FSC) technologies with its latest universal composite G-ænial A'CHORD which brings together simplification, invisible fillings, natural fluorescence and advanced technologies in one composite.

Class IV controlled layer concept utilising G-ænial A'CHORD in 3 shades



Pre-Operative presentation, exhibiting a failed direct composite restoration on the upper left central incisor (Tooth 21).



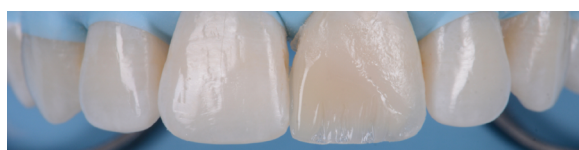
Tooth surface cleaned and prepared with 37% Phosphoric Acid prior to application of the adhesive with G-Premio BOND.



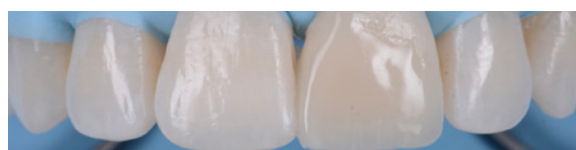
Completion of the palatal shelf and interproximal wall with the application of G-ænial A'CHORD composite, shade JE. The interproximal wall was formed with the use of a plastic myeloid strip and pull through technique to help develop an anatomical contour.



The dentine layer was then completed by the application of an opaque shade of G-ænial A'CHORD AO2. This is to provide the correct opacity and "block out" effect of the final restoration.



A chromatic body shade, G-ænial A'CHORD shade A2 was then applied and extended beyond the bevel to mask the transition line. Internal anatomy in the incisal third was also sculpted and formed in this increment of composite resin. White tints, Essentia White Modifier (WM) was then utilised to accentuate the mamelons and to replicate similar characteristics present in the adjacent right central incisor.



A final translucent shade of G-ænial A'CHORD shade JE was then placed to bring the anatomy to full contour.



2-week review demonstrating the complete optical and functional G-ænial A'CHORD restoration on the tooth 21.

Case Study by Dr Anthony Mak and Dr Andrew Chio



Download
Product
Brochure

DR ANTHONY MAK



DR ANDREW CHIO

