



Transform the way you work

Start injecting with our strongest
direct restorative ever*

**G-ænial® Universal
Injectable**



3M

Welcome to the future

G-ænial® Universal Injectable is destined to be a game-changer in restorative dentistry. With its unique characteristics it will truly transform the way you work.

World-leading technologies have enabled GC to define a new benchmark composite offering **exceptional strength, unsurpassed polishability** and fantastic, tooth-blending aesthetics.

But you'll be amazed at how it is **injectable and shapeable all at the same time**. It adapts perfectly to the cavity floor, but lets you build, shape and contour while you are injecting – because **G-ænial® Universal Injectable** doesn't slump!

It will also save you time and money because placement is so much faster and because you don't waste any material at all – you only use what is needed.

Try it for yourself and embrace the future!
You'll never look back.

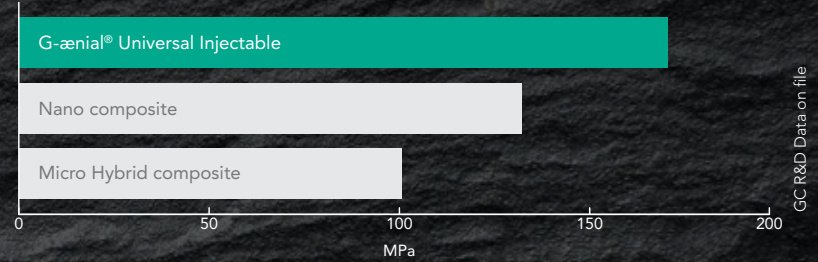


Exceptional strength and wear resistance

Our strongest direct restorative ever*

GC's world-leading filler technologies have allowed us to develop an injectable material that is significantly stronger than most conventional paste composite materials. It's a new paradigm in thinking that a composite with a more flowable consistency is actually your strongest option!

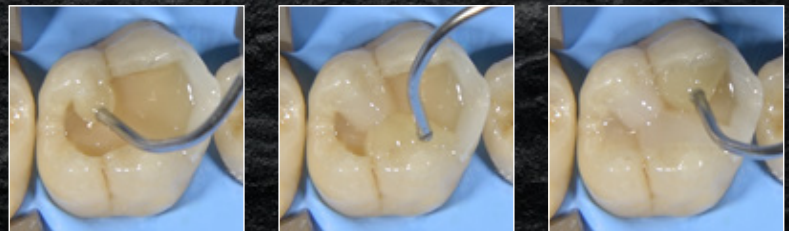
Flexural Strength



3 steps in 1 - shape and contour as you inject

Inject, shape and contour all at once

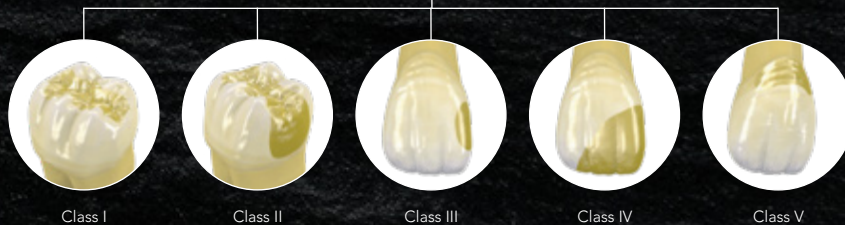
Because **G-ænial® Universal Injectable** doesn't slump or string, you have total control to adapt, shape and contour as you inject for fast, effortless restorations. It will adapt perfectly to the cavity floor and allows you to easily build contours, cusps and even proximal walls.



Unsurpassed polishability with beautiful aesthetics

Universal application for all cavity classes

Faster placement time with no wastage



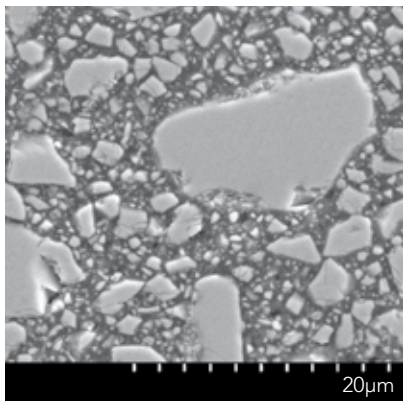
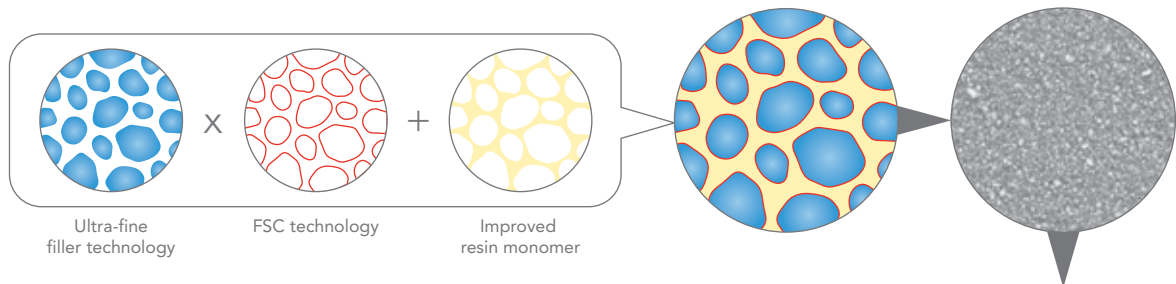
*based on ISO 4049 testing

3in1 Technologies

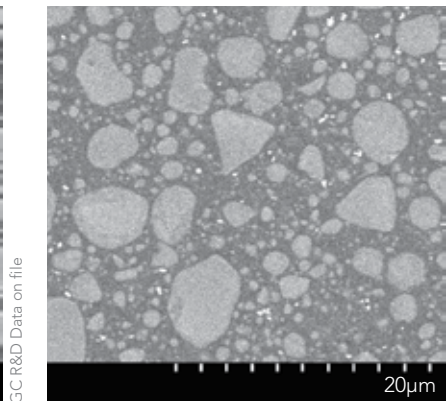


World-leading innovation and technology

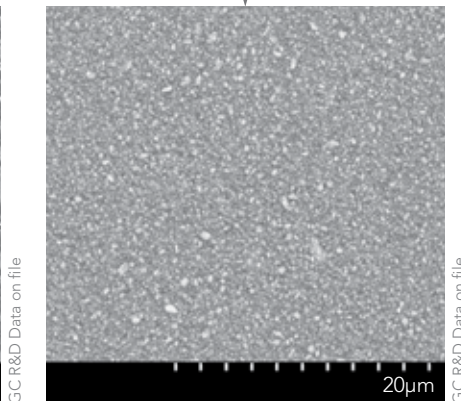
Our latest full-coverage silane coating (FSC) technology makes it possible to homogeneously and densely disperse ultra-fine 150nm fillers in the improved resin monomer matrix giving unparalleled strength, durability and energy-absorbing resilience with high radiopacity – 252% AI.



Micro Hybrid – Typically contains a range of glass and nano fillers of varying sizes



Nano composite – Typically contains spherical nano clusters made up of agglomerated nano fillers of varying sizes



G-aenial® Universal Injectable – Ultra-fine 150nm homogeneously dispersed glass fillers

Innovative syringe design delivers with ease and no slumping

With effortless extrusion, our new syringe is a joy to use - and the bendable tips make precise delivery easy.

No stringing, no slump, no stress

Bendable tips for superior cavity adaptation

Easy extrusion for maximum comfort

3in1 Benefits

Exceptional strength



Unsurpassed surface integrity

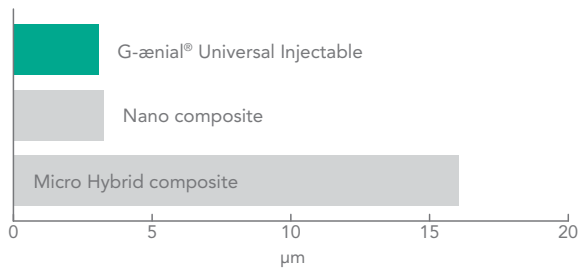


Long lasting aesthetics

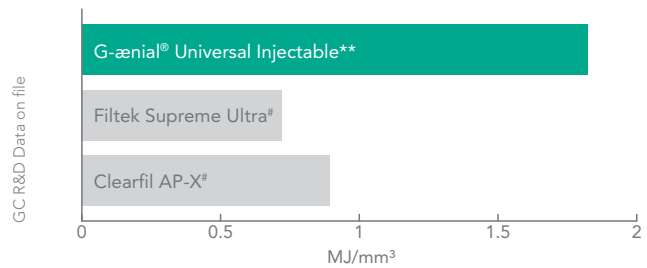
Superior strength, wear resistance and polish retention

G-ænial® Universal Injectable's high-density structure not only provides exceptional strength, but also greater wear resistance, unmatched high polish retention and high resistance to discoloration for long-lasting aesthetics.

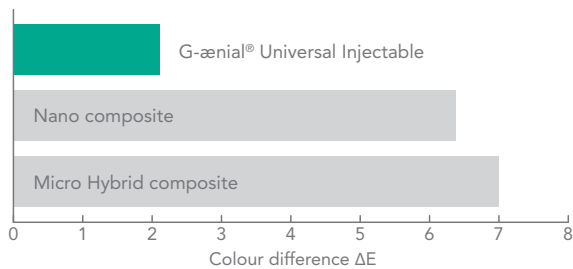
Wear Loss



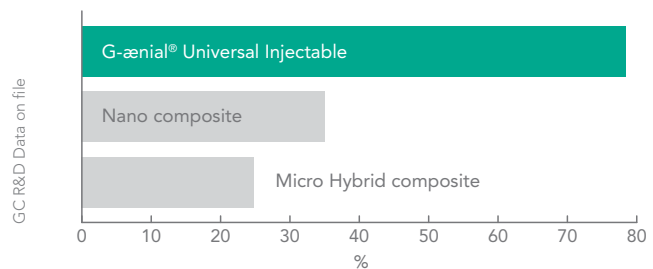
Resilience (Toughness)



Discolouration (at 7 days, 2% coffee solution)



Polish Retention (After toothbrush wear – 12,000 cycles)



3in1 Savings

Less time



No waste



Less stress

Save time, save material, save stress

With far fewer steps than conventional composite, the time savings for restorations are significant. G-ænial® Universal Injectable also eliminates wastage. You only use what you need! And because G-ænial® Universal Injectable doesn't string or slump the whole process is easier and the end result is less stress in your day.

Conventional pastes



G-ænial® Universal Injectable



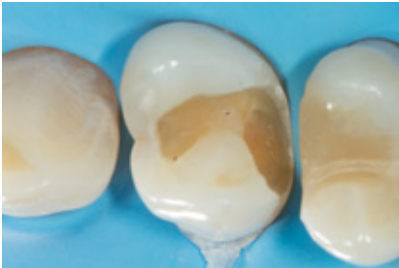
* Interrelation among the handling, mechanical, and wear properties of the newly developed flowable resin composites. Imai et al. Journal of the Mechanical Behavior of Biomedical Materials 89 (2019) 72–80

** Gaenial Universal Injectable is referenced as Gracefil Flow

Not trademarks of GC Corporation

Case Studies

Class II restoration



1. Removal of the old restoration & caries removal



2. Undercuts can easily be reached thanks to the bendable tips



3. Building the proximal wall using the enamel shade JE



4. Removal of the sectional matrix after building the wall



5. A class I procedure can now be followed; the dentin layer is created with the A4 shade



6. Final situation after finishing and polishing of the margins

Dr Javier Tapia Guadix – Spain

Full-incisal build up and cervical restorations with single shade



1. Pre-operative showing lower incisal wear and cervical lesions requiring conservative restorations.



2. Full build up and VDO increase of lower incisors using a single shade and cervical lesions requiring restorations.



3. Final conservative management of different types of restorations using a single shade.

Dr Anthony Mak – Australia

Management of early worn dentition



1. Early wear evident on a 40-year old patient needing conservative management.



2. Old composite restorations removed and teeth micro-etched. Build up and restorations on the occlusal surface using alternate teeth technique.



3. Final restorations using a single shade injection technique, shade A1.

Dr Anthony Mak – Australia

Injection moulding technique



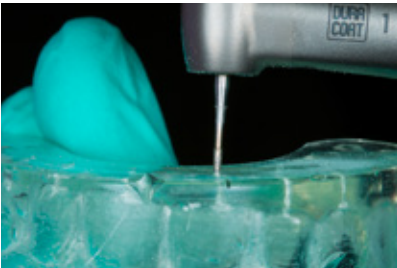
Model with wax-up of the desired tooth shape.



An impression tray is filled with EXACLEAR.



The desired shape is copied. The mould can be easily removed from the impression tray and the model.



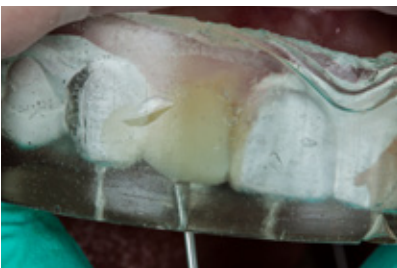
Holes are drilled in the EXACLEAR mould through which the composite will be injected.



Etching the enamel.



Application of the adhesive (G-Premio BOND).



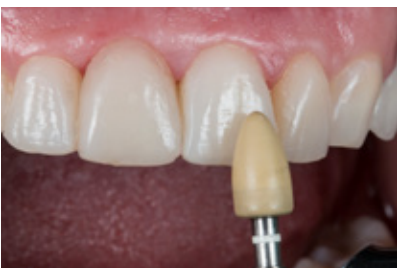
Injection of the composite into the mould. This process is repeated for each tooth.



Finishing the vestibular and palatal margins.



Finishing the approximal margins.



Polishing the composite restorations.



Result after polishing.



Smile after treatment.



DA DENTAL ADVISOR
Product insights you can trust.



Packages:

1 Syringe Pack

1x Syringe 1.7g (1.0 ml), 5x Dispensing Tip Needle,
5x Dispensing Tip Long Needle, 1x Light-protective Cap

2 Syringe Pack

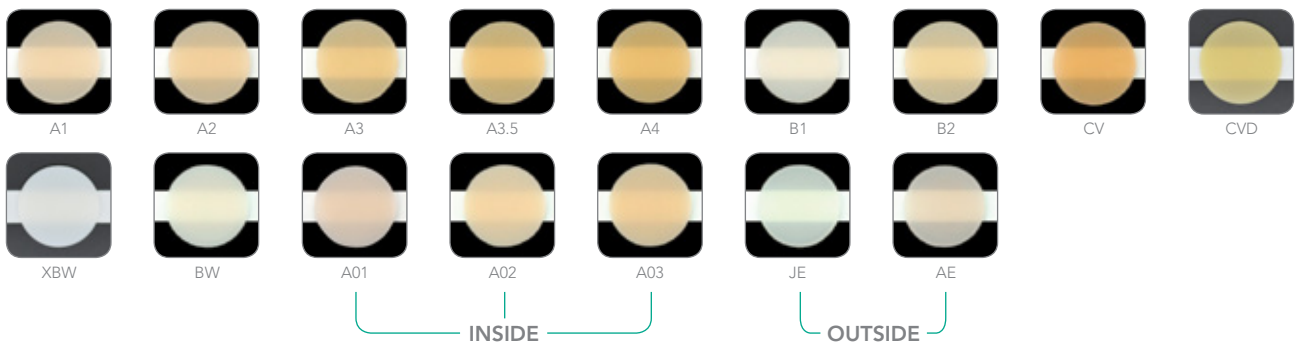
(available in shades A1, A2, A3)
2x Syringe 1.7g (1.0ml), 10x Dispensing Tip Needle,
10x Dispensing Tip Long Needle

Dispensing Tip Refill

20x Dispensing Tip Long Needle
20x Dispensing Tip Regular Needle

Shades:

XBW, BW, A1, A2, A3, A3.5, A4, B1, B2, CV, CVD, AO1, AO2, AO3, JE, AE



G-Premio BOND Refill

5mL liquid (1)

* <https://www.dentaladvisor.com/evaluations/g-aenial-universal-injectable/>



Since 1921
Towards Century of Health

GC Australasia Dental Pty Ltd
1753 Botany Road Banksmeadow
NSW 2019 Australia

T: +61 2 9301 8200
E: info.australasia@gc.dental
www.gcaustralasia.com