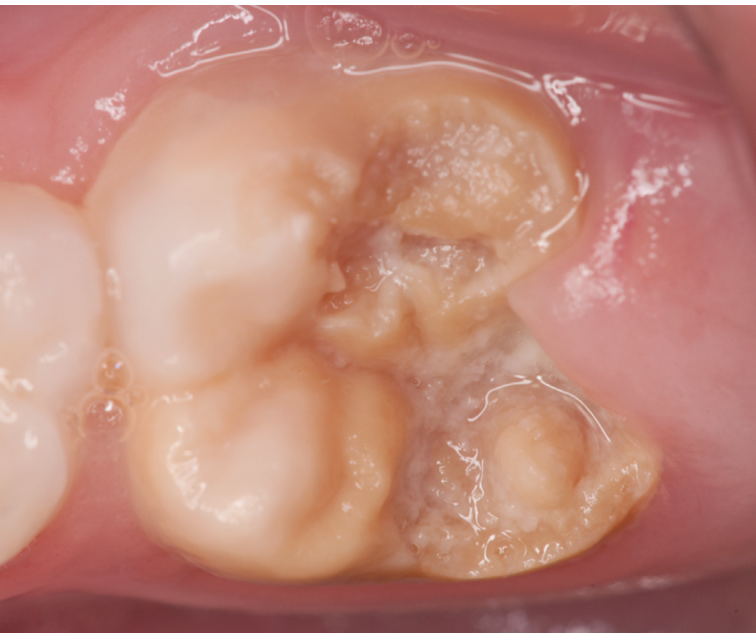


GC

CHALKY TEETH AND MOLAR HYPOMIN

A silent epidemic damaging
1 in 5 children's teeth*



Chalky teeth and
GC Tooth Mousse™
FAQs



What is Molar Hypomin?

Often called Chalky Teeth, Molar Hypomin is short for Molar Hypomineralisation, a developmental dental defect (D3) that mainly affects “molars” which are our back teeth. “Hypomin” describes tooth enamel that is soft and porous rather than hard and shiny white; and it’s that softness which can cause problems.



www.thed3group.org/sam-has-molar-hypomin

What should I look for in my child's mouth?

Most prone to Molar Hypomin are the “6-year molars” – otherwise known as the first “adult” or “permanent” molars whose eruption into the mouth typically occurs at 6–7 years of age. The commonest sign is chalky spots (creamy-yellow/ brown or extra-white patches) on a child’s teeth.



Where can I find more information about Molar Hypomin?

The **Chalky Teeth Campaign** website has important information to help educate families about chalky teeth. A children’s storybook, ‘**It’s just one of those things Sam. A Kids’ Guide to Chalky Molars**’, is also available for purchase. For further information, please visit www.chalkyteeth.org and www.thed3group.org.





What is GC Tooth Mousse™?

GC Tooth Mousse is a delicious tasting crème that contains calcium and phosphate; the major minerals teeth are made from. Because calcium and phosphate are carried in a special milk-derived protein called RECALDENT™ (CPP-ACP), they are available in a soluble form. This means GC Tooth Mousse can provide extra protection for teeth, buffer dental plaque acid from bacteria in the mouth and also protect teeth from acidic foods and drinks.

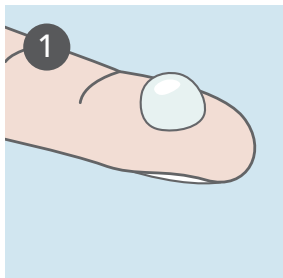
Why is GC Tooth Mousse recommended for treatment of Molar Hypomin?

Chalky molars are at much higher risk of tooth decay, so additional protection and home care are needed.

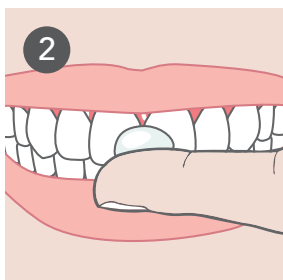
GC Tooth Mousse provides extra protection for chalky molars. In addition, regular applications of GC Tooth Mousse can help soothe and provide comfort for children suffering from Molar Hypomin.



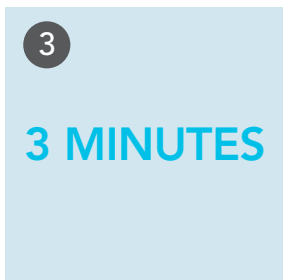
How do I apply GC Tooth Mousse?



Squeeze a small amount of GC Tooth Mousse onto your clean finger.



Apply to all chalky teeth with your finger and then use your tongue to spread evenly around all your teeth.



Leave GC Tooth Mousse on teeth for a minimum of 3 minutes avoiding spitting out and swallowing. For a more effective result, allow GC Tooth Mousse to remain in contact with your saliva for an additional 1–2 minutes.

How often do I apply GC Tooth Mousse?

You should discuss with your dentist how often and for how long you should apply GC Tooth Mousse. Application should occur after brushing teeth. In most situations, morning and night application is advised.

Source:

* For 2-year and 6-year molars: <https://www.thed3group.org/prevalence.html>

The D3 Group is proud to be associated with this educational initiative. This educational partnership does not imply endorsement of specific products.

When is GC Tooth Mousse Plus preferred to GC Tooth Mousse?

GC Tooth Mousse Plus contain 900 ppm fluoride and is recommend for:

- children older than 6 years old
- patients where additional fluoride exposure is desired.

For how long should I continue using GC Tooth Mousse?

Home application of GC Tooth Mousse could be a transitional step prior to restorative treatment, or it could be part of a longer term treatment strategy. Your dental professional will guide you on this.



- ☐ Apply GC Tooth Mousse
- ☐ Apply GC Tooth Mousse Plus
- ☐ Every night following tooth brushing
- ☐ Every morning AND night following tooth brushing

Notes: _____

GC Tooth Mousse

Topical crème with calcium and phosphate



Tooth Mousse Plus

Assorted pack 10pcs contains: 4 x Mint, 4 x Strawberry, 2 x Vanilla, 40g tube (35ml)

Single flavour 10 pack: Strawberry, Vanilla or Mint

Tooth Mousse

Assorted pack 10pcs contains: 2 x Melon, 2 x Strawberry, 2 x Frutti Tutti, 2 x Mint, 2 x Vanilla, 40g tube (35ml)

Single flavour 10 pack: Strawberry, Vanilla, Mint, Milkshake or Chocolate



Go to:
www.chalkyteeth.org
to read or purchase
the storybook.



Scan to visit
www.toothmousse.com.au

Distributed in New Zealand by
Henry Schein Dental
243-249 Bush Rd, Rosedale
Auckland 0632,
NEW ZEALAND
Free Phone: 0800 808 855
www.henryschein.co.nz/contact



ALWAYS READ THE LABEL AND FOLLOW THE DIRECTIONS FOR USE.

RECALDENT and RECALDENT logo are trademarks of Mondelēz International group used under license.



GC Australasia Dental Pty Ltd
1753 Botany Road, Banksmeadow
NSW 2019, Australia

T: +61 2 9301 8200
www.gc.dental/australasia

HS Code: GC-MOLARHYPOMIN