





100 years of Quality in Dental



Contents



1. Aesthetic Crown Workflows	4
2. Onlay & Overlay - from A to Z	6
3. Injection moulding technique	8
4. Small changes, big smile	10
5. Fall in love with your next restorative	12
6. Molar Incisor Hypomineralisation	14
7. Back to your roots!	16

IDS 2025 – Highlights & Innovations you shouldn't miss

Dear Reader,



While the doors of IDS 2025 in Cologne have closed, the momentum and excitement from this year's event continues—and we're thrilled to share some of the key moments and innovations with you in this Get Connected – IDS Special Edition.

For those who couldn't attend, this magazine offers a glimpse into what made our presence at the world's leading dental show truly special. From hands-on demonstrations and expert lectures to in-depth presentations of clinical workflows, the GC booth was a hub of inspiration, learning, and practical solutions.

At the heart of our showcase were comprehensive treatment approaches designed to address real-world clinical challenges—ranging from preventive care to advanced restorative and prosthetic dentistry. Visitors engaged with focus topics such as Root Caries Treatment, IMT Application, Cusp by Cusp, and Anterior Diastema Closure—each demonstrating the clinical power and versatility of the GC product portfolio.

Our tried-and-tested Class I and II restorative solutions, along with our extensive prosthetic and luting systems, continue to raise the standard in dental care. Paired with our high-awareness campaigns, they are driving a growing shift toward minimally invasive, patient-centered dentistry.

Even if you weren't in Cologne, we invite you to explore the innovation and synergy behind One GC. This edition brings you closer to the workflows, products, and concepts that drew attention and praise at IDS 2025.

If you like to get more insights on our practical solutions for some of your daily routines, contact the GC team member in your neighborhood for an individual review of options at your disposal!

Thank you for your continued interest in GC. We're proud to support dental professionals worldwide in building a healthier, longer-living society—together.

Warm regards,

Josef Richter

Chief Operating Officer & President
GC Europe AG

Aesthetic crown workflows

Strong solutions for beautiful teeth

In the realm of modern dentistry, full ceramic crowns have become a routine restoration, offering both durability and aesthetic appeal. At GC, we understand the importance of providing practitioners with a comprehensive workflow tailored to their needs. Our range of high-quality products ensures that every aspect of the restoration process is met with precision and excellence, empowering practitioners to deliver optimal patient outcomes.

1

MATERIAL SELECTION

Balance between beauty and strength with **Initial Zirconia Disk** or **Initial LiSi Block**



2

PREPARATION

Remove the least amount of tissue while respecting the framework requirements



3

FINISHING

Finishing options from monolithic to classic cut-back with **Initial Ceramics**



4

PLACEMENT

Conventionally or adhesively luted



Scan to check out the workflows!



Initial Zirconia Disk

Surface roughening:

Sandblasting with 50 µm Al₂O₃

Chemical adhesion:

Apply MDP

FujiCEM Evolve: no primer required

G-CEM ONE: no primer required (contains MDP)

Initial LiSi Block and LiSi Press

Etching:

Etching with hydrofluoric acid

Chemical adhesion:

Apply silane

FujiCEM Evolve: no primer required

G-CEM ONE: use G-Multi PRIMER

Cement with FujiCEM Evolve

- Ideal when margins are subgingival
- When retention/resistance shape are sufficient
- High bond strength to zirconia
- Low chance of post-op sensitivity
- Preferred when the caries risk is high

Bond with G-CEM ONE

- Universal, versatile option
- Can be used with **G-Premio BOND** or **G-CEM ONE Adhesive Enhancing Primer** if retention/resistance shape are insufficient
- 4 aesthetic shades, colour stable over time
- Excellent dark-cure performance (for thick/opaque crowns)



Onlay & overlay - from **A₁** to **Z₁₀**

Smart solutions from GC for your partial indirect restorations

Advances in adhesive technology, the demand for minimally invasive preparations and an escalation in aesthetic demands have noticeably increased the indications for partial indirect restorations. This requires a paradigm shift that needs to be considered in the treatment planning.

Next to high-quality materials for this treatment from the start to the finish, GC also offers comprehensive education to ensure that you have all support you need to deliver exceptional results. Experience the difference that we can make in your practice and elevate it to the next level!

P₃repare



Preparation is a crucial step in your indirect partial posterior restoration workflow. GC makes it easy with its smart solutions and tips & tricks to guide you from A to Z of every step!

S₁elect



Choosing the material for a posterior partial restoration can be a real challenge. GC offers you two excellent options that will correspond to all the decisive factors: Initial LiSi Block & CERASMART270



Scan for more information





F₄inish



Polish or paint? The choice is yours!
Both Initial LiSi Block and CERASMART270 can be either painted or simply polished for a quick, easy and aesthetic result

L₁ute



Simply the ONE!
GC offers you a universal luting solution: G-CEM ONE. Use it as a self-adhesive cement or combine it with G-CEM ONE Adhesive Enhancing Primer or G-Premio BOND.



Injection moulding technique

Transform the way you work!

IMT is an easy and predictable method to create direct restorations as aesthetic as indirect ones, yet created more quickly and more cost-effectively, while working in a minimally invasive way.

Indications



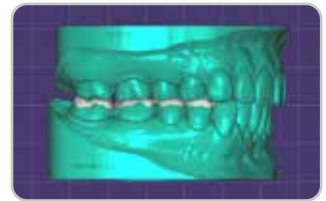
Detailed surface or shape creation



Large aesthetic cases



Wear cases



Vertical dimension of occlusion changes

Courtesy: from left to right: Dr. Miloš Ljubičić, Serbia; Dr. Antonio Saiz-Pardo, Spain; Dr. Lucile Dahan, France; Dr. Anthony Mak, Australia

Materials

Mould EXACLEAR

- **Stable**
Detailed reproduction of anatomy
- **Firm**
Remove, reposition and inject without dimensional changes
- **Transparent**
Visual control during injection and efficient light-curing



Composite G-aenial Universal Injectable

- **Strong**
No chipping or fracturing, excellent wear resistance
- **Aesthetic**
Superior gloss and colour stability
- **Versatile**
Many shades and opacities to handle any substrate



Cases



Courtesy: Dr. Antonio Saiz-Pardo, Spain



Courtesy: Dr. Kostas Karagiannopoulos, UK

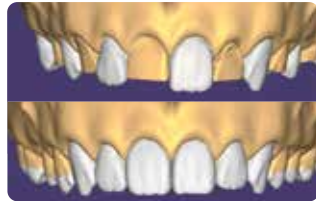


Injection Moulding Technique
Scan to find out more!





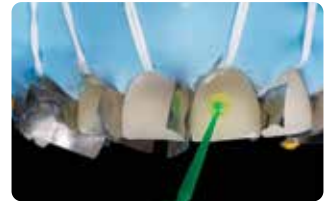
Initial situation.



Partial and complete wax-up of the teeth.



EXACLEAR impressions of the models based on the respective wax-ups.



Bonding with **G-Premio BOND** of the alternate teeth after selective etching.



G-aenial Universal Injectable injection into the partial silicone index.



Removal of excess composite.



Finishing, polishing and adjustments.



Final result.



Small changes, big smiles

Minimally invasive restorations for maximum aesthetic impact

A significant number of people are unhappy with their smile, which has a considerable psychosocial impact. Although many seek cosmetic dental treatment, costs, fear and duration of total treatment are often barriers to the patients. Nevertheless, many could benefit from small and subtle changes to their teeth. With simple direct and freehand techniques, quick but significant results can be obtained that ultimately greatly improve the overall smile aesthetics.

Single shade restorations

G-ænial A'CHORD

- Pleasant consistency, adapted to the use
 - Simplified shade selection due to excellent blending with the surrounding tooth
 - Quickly polished to sustained brilliance
- The true-to-nature fluorescence contributes to consistent colour matching in any circumstances



G-ænial Universal Injectable

- Exceptional strength and wear resistance
 - 3 steps in 1: shape & contour as you inject
 - Easy to polish to lasting high gloss
- Due to highly controlled placement it is particularly convenient for the restoration of smaller defects in high-load areas



Single visit smile sculpting



Restoring incisal wear and closing diastema with G-ænial A'CHORD.
Courtesy: Dr Aleksandra Ślaczan, Poland

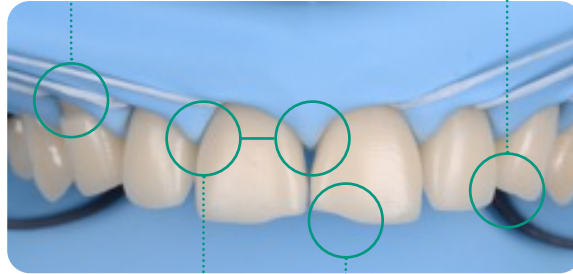


Reshaping of teeth and diastema closure with G-ænial A'CHORD.
Courtesy: Dr Andres Silva, Spain



The restoration of **abfractions** in the anterior area is important for aesthetic appearance especially in patients with high smile lines. Moreover, restoring abfractions strengthens the cervical area of the tooth, prevents further loss of enamel and ameliorates unpleasant sensitivity.

Black triangles and **diastemas** can cause entrapment of the food and accumulation of bacteria, which leads to gingivitis and ultimately periodontitis. By eliminating the black triangles and diastemas with composite bonding, the dentist not only improves the aesthetics, but also protects the long-term health of the periodontal tissues.



Worn canine cusp restoration is of special functional importance. Creating functional canine guidance with a minimally invasive composite addition to the canine cusp will protect the posterior teeth during lateral movements of the jaw.

Incisal wear restorations return the youthful appearance to the smile and prevent further loss of enamel and exposure of the dentine.



Small changes, big smiles
Scan to find out more!



Fall in love with your next restorative

Simplified and efficient solutions for posterior restorations

everX Flow

BENEFITS

- Dentine replacement that **strengthens your restorations from within**
- **Crack-stopping** fibers
- **Easy bulk placement** up to 5.5 mm
- **Perfectly adapts** to cavity walls without slumping

INDICATIONS

- Endo-treated teeth
- Large cavities
- Core build-ups



Courtesy of
Dr J. Tapia Guadix, Spain



Courtesy of
Dr R. Novotny, Slovakia

G-ænial Universal Injectable

BENEFITS

- **Shape and contour** as you **inject**
- **High-strength composite** to restore the entire cavity
- Long bendable tip to **reach every spot**
- **Unsurpassed polishability**

INDICATIONS

- Cusp-by-cusp
- Injection moulding
- All direct posterior indications



Courtesy of
Dr M. Kudelis, Lithuania



Courtesy of
Dr M Peumans, Belgium

EQUIA Forte HT

BENEFITS

- **Proven longevity** with a synergistic protective coat
- **Biocompatible and moisture-tolerant**
- Bulk-fill and self-adhesive for **quick and easy placement**
- Smart strengthening with **ion exchange**
- **Cost-effective**

INDICATIONS

- Challenging applications
- MIH
- Root caries
- Stamp technique



Courtesy of
Dr A. Patel, United Kingdom



Courtesy of
Dr P. Rouas, France

Scan to find out more!





everX Flow
Fiber-reinforced flowable
composite for dentin
replacement



G-ænial Universal Injectable
High-strength restorative
composite



EQUIA Forte HT
Bulk-fill glass hybrid
long-term restorative system



Molar Incisor Hypomineralisation

MI treatment solutions for MIH



Clinical appearance



Mild MIH
Courtesy of Prof. van Amerongen,
the Netherlands



Moderate MIH
Courtesy of Prof. Baroni, Italy



Severe MIH
Courtesy of Prof. Baroni, Italy



Affected incisors as part of MIH
Courtesy of Prof. Baroni, Italy

Symptoms

- Hypersensitivity
- Decreased response to local anaesthesia
- Rapid caries progression
- Postoperative breakdown



Treatment modalities

Prevention in office



Courtesy of Dr. Rouas, France

Prevention at home



Courtesy of Prof. Gatón Hernández,
Spain

Surface protection



Courtesy of Dr. Rouas, France

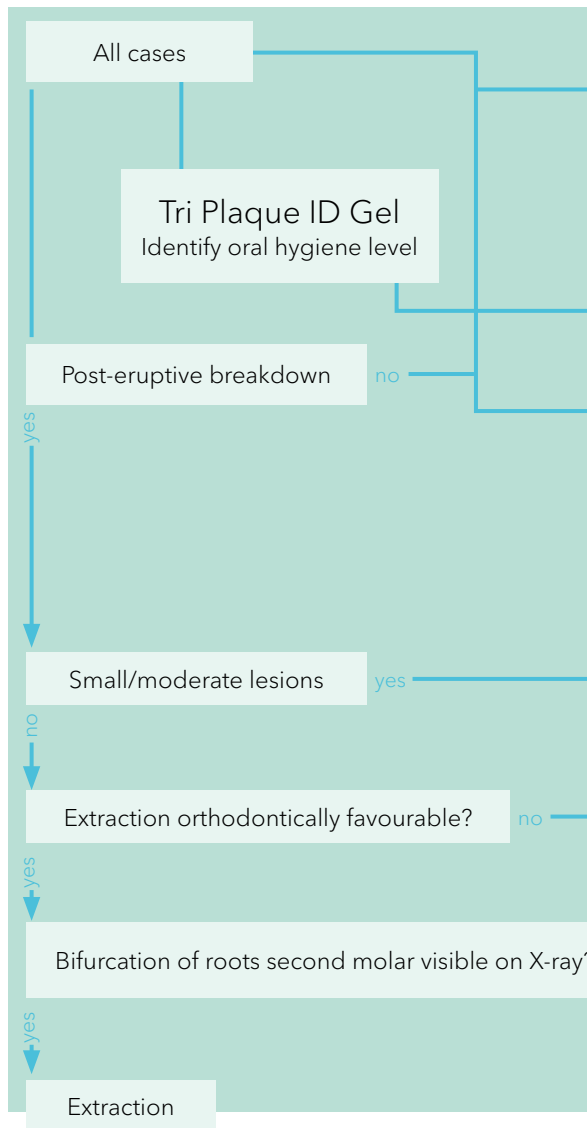
Minimally invasive restoration



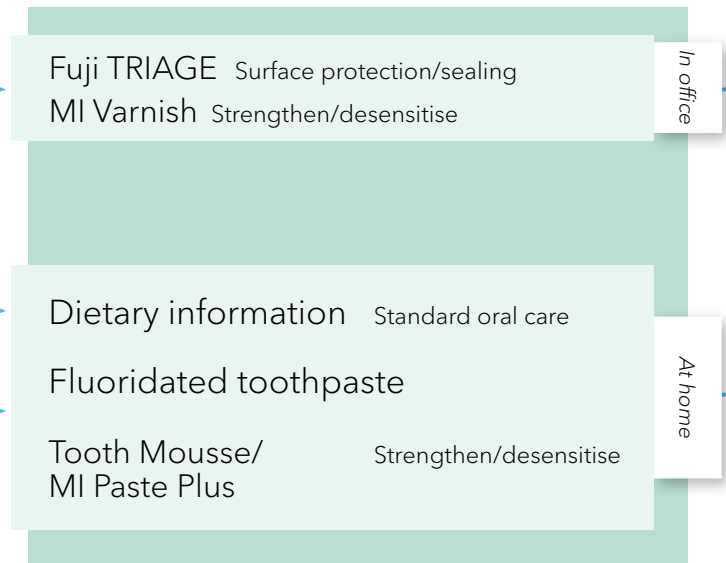
Courtesy of Dr. Marciano, Spain



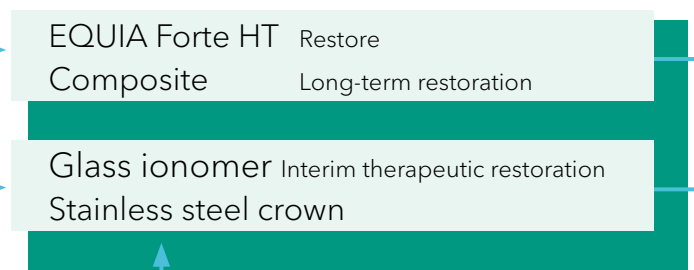
IDENTIFY



PREVENT



RESTORE



RECALL

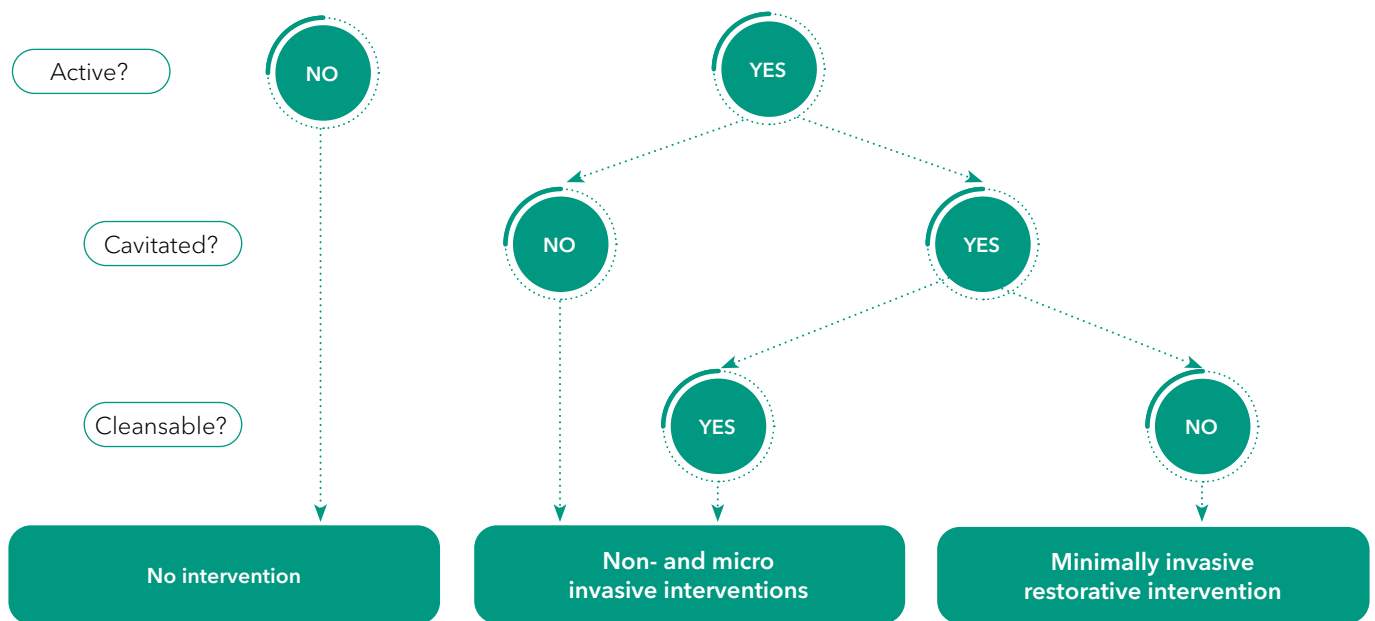
Back to your roots!

MI treatment solutions for root caries

Steady increases in both the absolute and relative numbers of older people – together with increased tooth retention into old age – pose particular challenges for the dental practice. Root caries will become a daily challenge within the ageing population. It is essential to approach root caries in a holistic way: identify the risk factors, prevent them from occurring and restore the already present cavities in a minimally invasive way.



Decision tree for caries lesion assessment*



- Assess dietary habits and recommend low-sugar foods and drinks.
- Promote excellent oral hygiene through in-office appointments and patient/caregiver education.
- Boost remineralisation at the office with MI Varnish and at home with MI Paste Plus at home.

- Apply MI Varnish to incipient carious lesions.
- Protect exposed root surfaces with the flowable glass ionomer GC Fuji TRIAGE.

- Use resin-modified GIC Fuji II LC for quick and easy placement.
- Restore deep root carious lesions with moisture-tolerant, strong glass hybrid EQUIA Forte HT.
- For high aesthetic demands and good isolation, use injectable composite G-aenial Universal Injectable.



Schwendicke, Falk & Splieth, Christian & Breschi, Lorenzo & Banerjee, Avijit & Fontana, Margherita & Paris, Sebastian & Burrow, Michael & Crombie, Felicity & Foster Page, Lyndie & Gatton, Patricia & Giacaman, Rodrigo & Gugnani, Neeraj & Hickel, Reinhard & Jordan, Andreas & Leal, Soraya & Lo, Edward & Tassery, Herve & Thomson, William & Manton, David. (2019). When to intervene in the caries process? An expert Delphi consensus statement. Clinical Oral Investigations. 23. 10.1007/s00784-019-03058-w.

Prevention is key for root caries. However, if it occurs, careful assessment is needed. Not all lesions require restoration, but active and cavitated lesions must be treated to prevent further damage and restore dental health.

The procedure, step by step



1. Assess the restorability of the affected tooth.



2. Remove carious tissue. If the pulp is healthy, a selective caries removal technique can be used.



3. Clean the cavity.
OPTIONAL STEP:
Apply Cavity Conditioner (10 sec.)
or Dentin Conditioner (20 sec.).
Rinse and dry gently.



4. Apply EQUIA Forte HT directly into the cavity.



5. Contour and model with a modeling instrument. Working time is 1 min 30 sec from start of the mix.



6. After complete setting do the final shaping and contouring with a fine grit diamond bur. Setting time is 2 min 30 sec from start of mix.



7. Place EQUIA Forte Coat onto the restoration with a microbrush (do not air-blow and light cure for 20 sec. (> 500mW/cm²: Halogen/LED)



8. Final result.



Unique view from the exhibition

Hands-on-courses



All the tools you need within hand's reach



GET CONNECTED

SMILE
PROGRAM

Learn. Share. Earn.



Get the app

GC Europe

GC EUROPE N.V.

Head Office
Researchpark
Haasrode-Leuven 1240
Interleuvenlaan 33
B-3001 Leuven
Tel. +32 16 74 10 00
Fax. +32 16 40 48 32
info.gce@gc.dental
www.gc.dental/europe

**GC EUROPE N.V.
East European Office**

Siget 19B
HR-10020 Zagreb
Tel. +385 1 46 78 474
Fax. +385 1 46 78 473
info.eeo@gc.dental

GC Germany GmbH

Seifgrundstraße 2
D-61348 Bad Homburg
Tel. +49 61 72 99 59 60
info.germany@gc.dental

GC Sverige AB

c/o Lundin Revisionbyrå
Erik Dahlbergsgatan 11B
SE-411 26 Göteborg
Tel. +46 768 54 43 50
info.nordic@gc.dental

GC AUSTRIA GmbH

Swiss Office
Zürichstrasse 31
CH-6004 Luzern
Tel. +41 41 520 01 78
info.switzerland@gc.dental

**GC EUROPE N.V.
Rep. Office Poland**

Spółka Akcyjna /
Przedstawicielstwo w Polsce
ul. W.Tetmajera 65D/2,
PL-31-352 Kraków
Tel. +48 12 425 14 74
info.poland@gc.dental

GC FRANCE s.a.s.

8 rue Benjamin Franklin
FR-94370 Sucy en Brie Cedex
Tel. +33 1 49 80 37 91
Fax. +33 1 45 76 32 68
info.france@gc.dental

GC IBÉRICA

Dental Products, S.L.
Edificio Codesa 2
Playa de las Américas 2, 1º, Of. 4
ES-28290 Las Rozas, Madrid
Tel. +34 916 364 340
Fax. +34 916 364 341
comercial.spain@gc.dental

GC Danmark ApS

c/o Andersen Partners
Advokatpartnerselskab
Buen 11, 6,
DK-6000, Kolding
Tel. +45 51 15 03 82
info.denmark@gc.dental

GC AUSTRIA GmbH

Tallak 124
A-8103 Gratwein-Strassengel
Tel. +43 3124 54 020
info.austria@gc.dental

**GC EUROPE N.V.
Rep. Office Romania**

Str. Carol Davila 21A, etaj 2,
ap.17, sector 5
RO-050451 București
Tel. +40 31 425 75 27
info.romania@gc.dental

GC Finland Oy

Lemminkäisenkatu 46
FIN-20520 Turku
Tel. +358 40 900 07 57
info.finland@gc.dental

GC ITALIA S.r.l.

Via Calabria 1
I-20098 San Giuliano
Milanese
Tel. +39 02 98 28 20 68
Fax. +39 02 98 28 21 00
info.italy@gc.dental

GC TURKEY Ltd.

Caferağa Mah.
Albay Faik Sözdener Cad.
İffet Gülhan İş Merkezi No:9 D:4
TR-34710 Kadıköy / İstanbul
Tel. +90 216 504 06 01
info.turkey@gc.dental

GC EUROPE N.V.**Benelux Sales Department**

Researchpark
Haasrode-Leuven 1240
Interleuvenlaan 33
B-3001 Leuven
Tel. +32 16 74 18 60
info.benelux@gc.dental

**GC EUROPE N.V.
Scientific Office in Saudi Arabia**

6901 King Abdul Aziz
2484 Al Maseef Dist.
KSA-12467 Riyadh
Tel. +961 1 331 889
info.middleeast@gc.dental

GC EUROPE N.V.**Israeli Branch**

Koifman Street 4
IL-68012 Tel Aviv
Tel. +972 3 797 96 10
info.israel@gc.dental

GC UNITED KINGDOM Ltd.

Coopers Court
Newport Pagnell
UK-Bucks. MK16 8JS
Tel. +44 1908 218 999
Fax. +44 1908 218 900
info.uk@gc.dental