



CERASMART™
from GC

The new hybrid ceramic
CAD/CAM solution

**Are you
sure it's not
ceramics?**

GC

Smart material for Smart applications.



Introducing a new hybrid ceramic block, GC welcomes you into the Smart Age, where you choose the right type of CAD/CAM block for each specific case.

Ceramics - the gold standard in CAD/CAM - and CERASMART look similar in some way. But CERASMART offers unprecedented opportunities for some clinical situations.

- Being capable of absorbing shocks, CERASMART is perfectly suited to challenging occlusal situations
- Its sharp adaptation and resistance to chipping ensure a long-lasting marginal seal
- Its balanced surface hardness will be especially beneficial in reducing the wear of the opposing dentition, while also ensuring a long lasting gloss of the restoration

And on top of that, **CERASMART** also offers you

- Efficient milling process with a short milling time and enhanced service life of milling tools
- Excellent polishability displaying an impressive gloss after a short polishing time
- Easy characterisation using Optiglaze Color, in just a few minutes

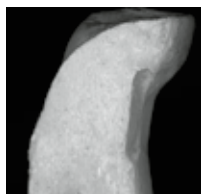
When **precision** and **durability** ought to unite.

CERASMART proves that you do not have to choose between precision and speed: a **short milling time unites with extremely sharp margins**, with no visible chipping, even at high magnification.

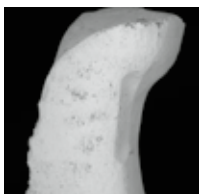
Milling Precision

Source: GCC R&D.

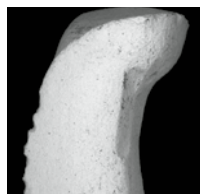
CERASMART™



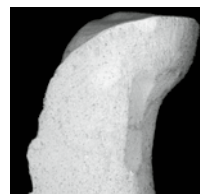
VITABLOCS® Mark II*



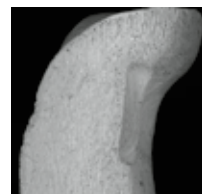
IPS e.max® CAD*



VITA ENAMIC®*



LAVA™ Ultimate*



Unique Technology

SEM images;
Source: GCC R&D

CERASMART is based on the latest GC filler technology, featuring ultra-fine homogeneously dispersed fillers offering both a **long-lasting polish** and less wear to the opposing dentition. Its **high radio-opacity** will also make the follow-up of your restorations easier.

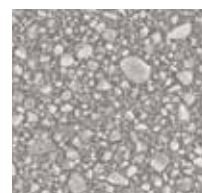
CERASMART™
(Flexible hybrid ceramics)



VITA ENAMIC®*
(Hybrid Ceramics)



LAVA™ Ultimate*
(Resin Nano Ceramics)



When **aesthetics** and **CAD/CAM** should connect

Cerasmart offers your patient aesthetic restorations, invisible under all circumstances thanks to its **optimal balance of fluorescence and opalescence** and natural shade integration.

CERASMART™
A2 HT

LAVA™ Ultimate
A2 HT*

VITA ENAMIC®
1M2 H*

IPS e.max® CAD
A2 HT*



TRANSMITTED LIGHT

CERASMART™
A3LT

LAVA™ Ultimate
A3 LT*

VITA ENAMIC®
2M2 T*

IPS e.max® CAD
A3 LT*



BLACK LIGHT

*Not a trademark of GC Europe

Increase your CAD/CAM restorative options with CERASMART™!

BEFORE



AFTER



Top left: Inlay restoration, courtesy of Dr. Gumpei Koike, Japan

Top right: Endo-crown, courtesy of Dr. Gilles Aldié, (e-Dentisterie), France

BEFORE



AFTER



BEFORE



AFTER



Below Left: Onlay restoration, courtesy of Dr. Rich Rosenblatt, USA

Below right: Crown restoration, courtesy of Prof. Marleen Peumans, Belgium

BEFORE



AFTER



A smarter system for a smarter workflow

No glazing, no firing

The **final steps for an aesthetic restoration are made easier** with two options to choose from: easy manual polishing or quick characterisation with the stroke of a brush ... using the wear resistant colouring glaze, Optiglaze Color.

Characterisation



> Ceramic Primer II



> Optiglaze Color



> Result



CERASMART™

> Finishing & Polishing



> DiaPolisher Paste



> Result



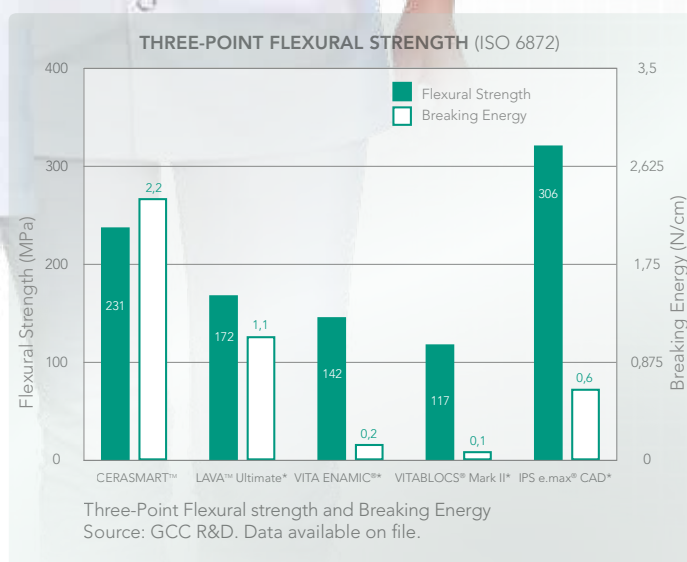
Polishing

SAME looks, **SAME** approach.
So where is the **difference**?



When **strength** and **flexibility** need to blend together.

CERASMART features the highest flexural strength in its category, and is superior to the classical feldspathic ceramic blocks. Most importantly, it also offers a **high flexibility (breaking energy)** to buffer masticatory pressure and sustain the most challenging clinical situations.



Welcome to the **SMART** age

Discover **CERASMART™** and the products that make it stand out
www.gceurope.com



Ceramic Primer II is the latest primer from GC, which can be used for all types of ceramics (including glass ceramics, zirconia and alumina), composites and hybrid ceramics.

A specialised primer offering strong and durable adhesion...

The perfect partner for your **CERASMART™** restorations!



Discover Optiglaze Color, the new light-cured characterisation material from GC!

Colouring, increased wear resistance and high surface gloss with the stroke of a brush...

Because everything looks better in colour!



DiaPolisher is GC's polishing paste featuring ultra-fine diamond particles – just follow your usual polishing procedure and use DiaPolisher Paste to achieve a higher gloss.

Improve your aesthetic results in one easy step!

CERASMART™ – the best of class hybrid ceramic material from GC



SHADES:

High Translucency (HT):

A1 HT, A2 HT, A3 HT, A3.5 HT, B1 HT

- Mainly to replace enamel
- Use in cases of inlays, onlays, veneers, partial and full crowns

Low Translucency (LT):

A1 LT, A2 LT, A3 LT, A3.5 LT, B1 LT

- For replacement of dentin and enamel structures
- Use to mask discoloured preparations, in particular for crowns

Bleach Shade (BL)

SIZES:

available in sizes 12, 14, and 14L

PACKAGES:

CERASMART for Cerec, refill of 5 blocks

CERASMART Universal, refill of 5 blocks

CERASMART Advanced Kit

CERASMART Starter Kit

GC EUROPE N.V.

Head Office
Researchpark
Haasrode-Leuven 1240
Interleuvenlaan 33
B-3001 Leuven
Tel. +32.16.74.10.00
Fax. +32.16.40.48.32
info.gce@gc.dental
<http://www.gceurope.com>

