

# CERASMART™270

Force absorbing hybrid ceramic CAD/CAM block

Natural fit  
and flexibility



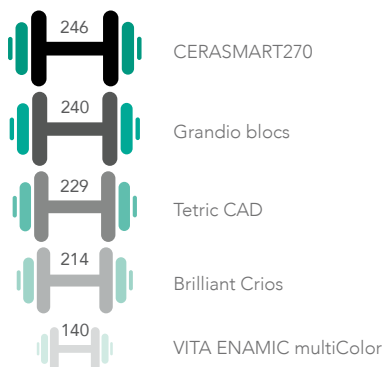
# CERASMART270

## Smart material for smart applications!

**CERASMART270** is an aesthetic hybrid block made to provide fast and long lasting clinical success. Thanks to the newly developed “**Full Coverage Silane Coating**” (FSC) with **improved nanofiller technology**, CERASMART270 offers high physical and aesthetic properties. The milling is fast and efficient, making it possible to create a qualitative restoration with fine margins and optimal fit in a very short time. Additionally, it can be polished or characterised for more vibrant aesthetics. CERASMART270 is the right block to use, be it for a quick onlay or a challenging wear case.

### Superior strength to endure mastication forces

- **High filler rate** thanks to FSC technology
- **Improved flexural strength** for restorations that resist time
- **High resistance to fracture**

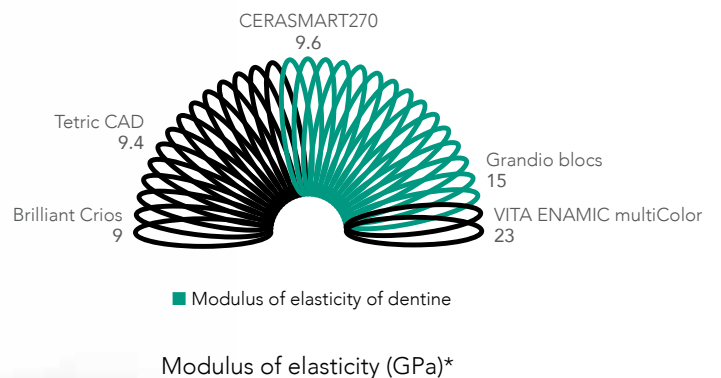


Three point flexural strength (MPa)\*

\*Source: GC R&D, Japan, 2018. Data on file

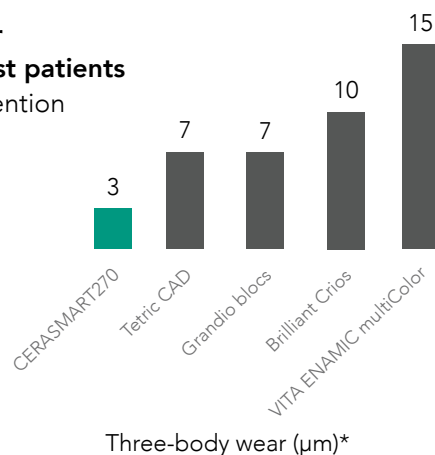
### Flexibility to absorb shock effects

- **Less stress peaks** during chewing
- Decreased risk of **material fatigue**
- Extremely well suited **for implant restorations**



### Wear resistance for long lasting restorations

- **Very low wear**
- Ideal for **bruxist patients**
- High gloss retention



Three-body wear (µm)\*

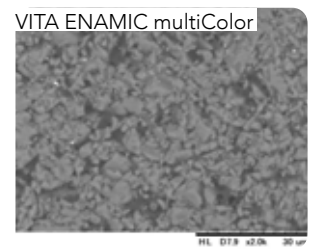
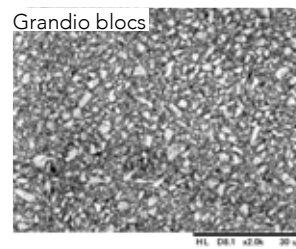
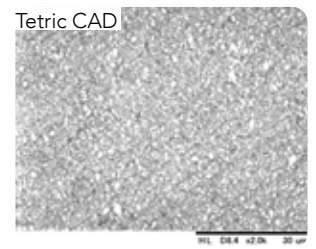
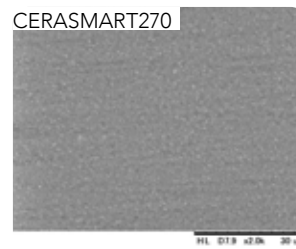
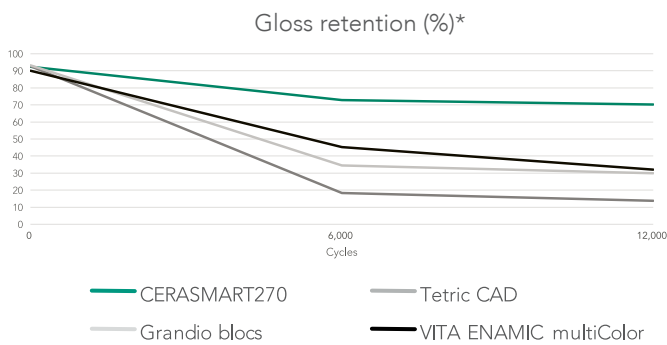
## Flexible and Precise

## Sharp margins that ensure a smooth transition



Very precise and smooth margins, without chipping, after quick and easy milling to guarantee a natural fit.

## Superior polishability and gloss retention



SEM images of CERASMART270 in comparison to competitors\*

Thanks to its fine-filler content, CERASMART270 is very easily polished and maintains a much higher gloss rate than its competitors for the same amount of time.

## Shades that blend in naturally



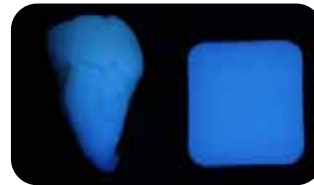
For a **natural smile** using only one shade.



Courtesy of MDT C. Hannker, Germany

## Optimal fluorescence and translucency

Natural tooth CERASMART270



**Beautiful colours** for a natural appearance. Warm, lifelike shades with an **optimally balanced fluorescence and opalescence.**

Natural tooth CERASMART270



Precise and Beautiful

## Choose your finishing path

### Characterisation

Because everything looks better in colour

Add character to your restoration with the stroke of a brush using OPTIGLAZE color, a ready to use and wear resistant glossy coating.



You can choose from a wide variety of colours or use the Clear glaze to add gloss only.

### Polishing

Fast and easy polishing

An impressive gloss level can be obtained by just some simple polishing steps.



Polishing can be done with your standard polishing wheels and burs.

## Easy and fast pre-treatment and luting options

### Etch or Sandblast



CERASMART270 is the only hybrid ceramic material that can be **etched** with hydrofluoric acid **or** can be **sandblasted**.

### Silane or MDP



In both cases, the use of the universal **G-Multi PRIMER** will always be a good choice, since it contains both silane and MDP.

### Pre-treat the tooth



**Choose your etching mode** depending on the presence of enamel and dentin on your preparation. Apply a bonding agent such as **G-Premio BOND**.

### Lute



Use an **adhesive luting agent** such as G-CEM LinkForce or G-CEM Veneer.

*Courtesy of Dr. P. Dimitrov, Bulgaria*

## Luting options for restorations that last



**G-CEM LinkForce**  
Universal dual cure resin cement with trusted performance.



**G-CEM Veneer**  
Light-cured resin cement for high aesthetic demands.



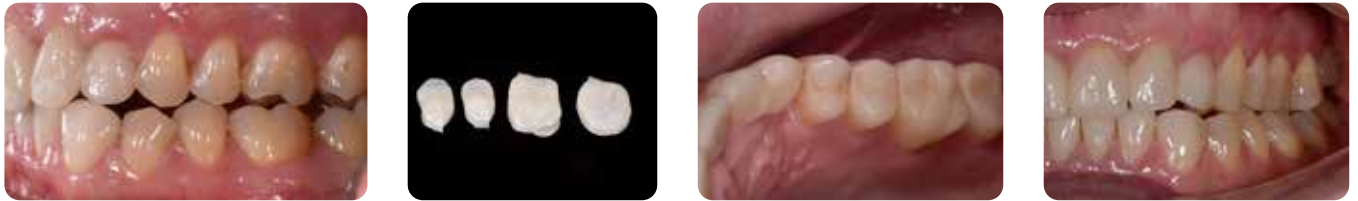
Whenever in doubt the GC Luting App is there to help you for a correct protocol.

# Beautiful and Easy

# Precision that lasts. Aesthetics that do not fade.

## Increase of the vertical dimension

With its high flexural strength and breaking energy, CERASMART270 is perfectly suited to solve challenging occlusal situations. Its balanced surface hardness will be especially beneficial in reducing the wear of the opposing dentition, while ensuring a long-lasting gloss of the restoration.



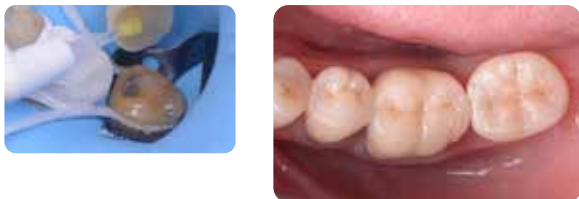
*Courtesy of Dr. C. Moussally, France*

## Single visit restorations

With CERASMART270 you can create durable aesthetic restorations with optimal fit in a single visit. The restoration will be milled in a few minutes and yet it will be very friendly to your milling burs.

Replacement of a large composite restoration with parapulpal pins

The right choice for large, load-bearing restorations.



*Courtesy of Dr. D. Gerdolle, Switzerland*

Implant-supported crown

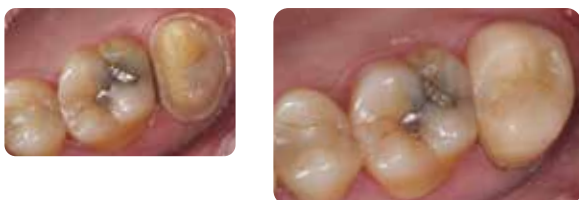
The elasticity of CERASMART270 is especially useful when placing an implant supported crown.



*Courtesy of Dr. J. Tapia Guadix, Spain*

Restoration of a second molar

Natural blending with only one shade make it a great material for a standard molar restoration.



*Courtesy of Dr. Y. Roos, Spain*

Restoration of a quadrant

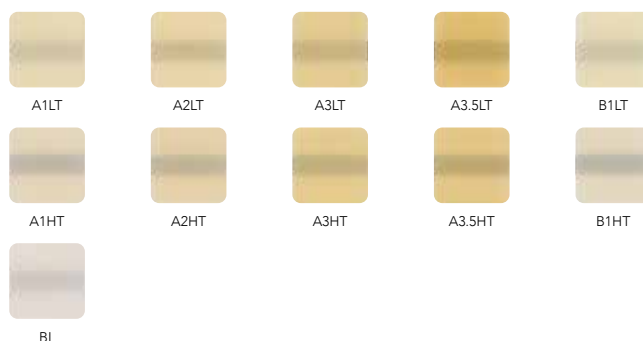
Perfect for creating several restorations in one appointment.



*Courtesy of Dr. G. Witkowski, Poland*

# CERASMART270

## Natural fit and flexibility



CEREC						
Shade	Size	Ref.	Size	Ref.	Size	Ref.
A1 HT	12	10001391	14	10001413	14L	10001435
A2 HT	12	10001392	14	10001414	14L	10001436
A3 HT	12	10001393	14	10001415	14L	10001437
A3.5 HT	12	10001394	14	10001416	14L	10001438
B1 HT	12	10001395	14	10001417	14L	10001439
A1 LT	12	10001396	14	10001418	14L	10001440
A2 LT	12	10001397	14	10001419	14L	10001441
A3 LT	12	10001398	14	10001420	14L	10001442
A3.5 LT	12	10001399	14	10001421	14L	10001443
B1 LT	12	10001400	14	10001422	14L	10001444
BL	12	10001401	14	10001423	14L	10001445

Universal						
Shade	Size	Ref.	Size	Ref.	Size	Ref.
A1 HT	12	10001402	14	10001424	14L	10001446
A2 HT	12	10001403	14	10001425	14L	10001447
A3 HT	12	10001404	14	10001426	14L	10001448
A3.5 HT	12	10001405	14	10001427	14L	10001449
B1 HT	12	10001406	14	10001428	14L	10001450
A1 LT	12	10001407	14	10001429	14L	10001451
A2 LT	12	10001408	14	10001430	14L	10001452
A3 LT	12	10001409	14	10001431	14L	10001453
A3.5 LT	12	10001410	14	10001432	14L	10001454
B1 LT	12	10001411	14	10001433	14L	10001455
BL	12	10001412	14	10001434	14L	10001456

### Related products



G-CEM LinkForce



G-CEM Veneer



OPTIGLAZE color



DIAPOLISHER Paste

CERASMART270, DIAPOLISHER Paste, G-CEM LinkForce, G-CEM Veneer, G-Premio BOND, G-Multi PRIMER and OPTIGLAZE color are trademarks of GC. Brilliant Crios, Grandio blocs, Tetric CAD, VITA Enamic multiColor and CEREC are not trademarks of GC.

#### GC EUROPE N.V.

Head Office  
 Researchpark,  
 Haasrode-Leuven 1240  
 Interleuvenlaan 33, B-3001 Leuven  
 Tel. +32 16 74 10 00  
 Fax. +32 16 40 48 32  
 info.gce@gc.dental  
<https://www.gc.dental/europe>

#### GC UNITED KINGDOM Ltd.

Coopers Court Newport Pagnell  
 Buckinghamshire  
 MK16 8JS  
 United Kingdom  
 Tel. +44 1908 218 999  
 Fax. +44 1908 218 900  
 info.uk@gc.dental  
<https://www.gc.dental/europe/en-GB>