

GC FujiCEM™ Evolve

The zirconia luting solution from the leader in Glass Ionomer technology

A step ahead



GC FujiCEM™ Evolve

A step ahead

Glass ionomers are GC's legacy, with proven quality as seen in independent studies all over the world. Taking a step ahead, GC FujiCEM Evolve has been designed to be your preferred partner when luting zirconia restorations.



Handmix or automix



- Openings are far apart: pastes do not contaminate each other, hand mixing is possible

- Easy to place
"Push and Click" mixing tip
- Can be dispensed directly into the restoration or the root canal (with the endo tip)



The resin-modified glass ionomer you can trust

- Less technique-sensitive than resin cements
- No need for pre-treatment: one-step application
- Long working time, fast setting time
- Moisture tolerant: rubber dam is not required
- Less risk of post-operative sensitivity
- Excellent sealing and marginal adaptation



Courtesy of Dr. J. Tapia Guadix, Spain

Optimal viscosity

- Controlled extrusion for an easier procedure
- Low film thickness & precise adaptation
- Tack-cure option for easier excess removal



Courtesy of Dr. J. Tapia Guadix, Spain

High wettability to zirconia

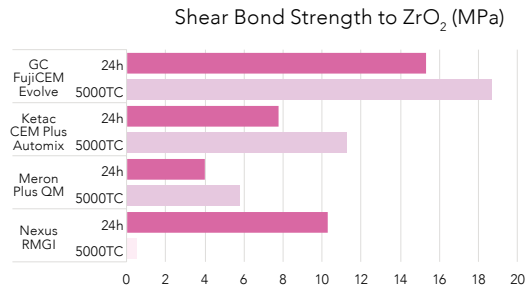


Composite resin luting cement does not penetrate the microporosities of zirconia.



Polyacrylic acid improve wettability to penetrate the microporosities on the surface of the tooth and restoration, and create a strong interlocking.

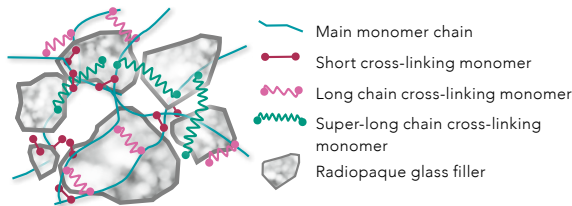
Optimised adhesion to zirconia



Source: G. Joshi et al. J Dent Res, 2020;99(Spec Iss A):1316.

Long-chain monomer technology

- Super-long monomer chains for strength and stability of the cement.



- Radiopaque glass filler for excellent visibility on X-ray (> 250% Al)

"This is really my go to for cementation now. I love the easy clean-up and handling and the confidence of a moisture tolerant. Bacterial resistant bond gives huge confidence. It really ticks all the boxes." – Dr. Jacques Smith, South Africa

"In my surgery the material of choice for the cementation of zirconium oxide, metal and PFM restoration is GC FujiCEM Evolve. Very limited post-operative sensitivity and the easy manipulation." – Dr. Sven Baumgartner, Germany

"With GC FujiCEM Evolve I am enjoying a luting comfort zone. Everyday luting of metal and Zirconia-based works is with this product much less stressed. Additional setting time, tack cure option and no post op sensitivity give me added value to my work." – Dr. Mislav Perić, Croatia

GC FujiCEM™ Evolve

A step ahead

Cementation of Monolithic tetragonal zirconia crown with GC FujiCEM Evolve



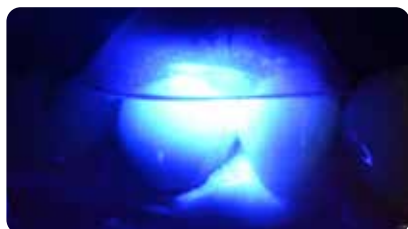
Initial situation



Dispensing with automix



Seating of the restoration



Rubbery state is reached after just 3 s of tack-curing



Easy to remove excess at once



Final result

Courtesy of Prof. R. Sorrentino, Italy



GC FujiCEM Evolve syringe (9.2 g / 5.0 ml)

- 10004926 GC FujiCEM Evolve Single pack: Syringe (1), Tips Regular (15)
- 10004916 GC FujiCEM Evolve Triple pack Handmix: Syringe (3), Mixing Pad (1)
- 10004928 GC FujiCEM Evolve Triple pack Automix: Syringe (3), Tips Regular (45)
- 10004917 GC Push and Click Tip Regular (15)
- 10004929 GC Push and Click Tip Endo (15)



Find the step-by-step for all luting procedures on the **GC Luting Guide**

GC FujiCEM Evolve is a trademark of GC.
Ketac CEM Plus Luting, Meron Plus QM and Riva Cem are not trademarks of GC.

GC EUROPE N.V.

Head Office

Researchpark,
Haasrode-Leuven 1240
Interleuvenlaan 33, B-3001 Leuven
Tel. +32.16.74.10.00
Fax. +32.16.40.48.32
info.gce@gc.dental
<https://www.gc.dental/europe>

GC UNITED KINGDOM Ltd.

Coopers Court Newport Pagnell
Buckinghamshire
MK16 8JS
United Kingdom
Tel. +44.1908.218.999
Fax. +44.1908.218.900
info.uk@gc.dental
<https://www.gc.dental/europe/en-GB>