

# GC Fuji TRIAGE®

Guiding the way to caries stabilisation and surface protection

## More than just a sealant Works where others won't



Since 1921  
100 years of Quality in Dental



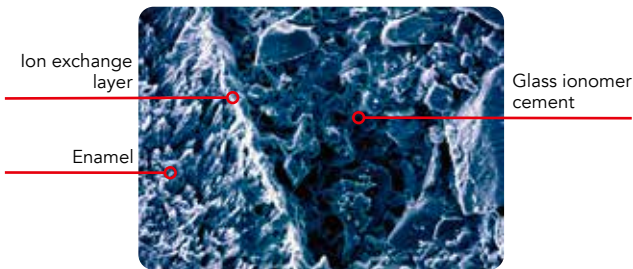
# Superior protection precisely when and where you need it

Child, adult or senior, each of them can benefit from the protection and fortification Fuji TRIAGE offers. This unique glass ionomer cement, with moisture tolerance is the ideal partner for patient and dentist in many cases!



- Self-adhesion and strong marginal seal without bonding or etching

- The fluidity and moisture tolerance of Fuji TRIAGE help it penetrate into deep pits and fissures



SEM Picture. Dr H. Ngo.  
An ion exchange layer is visible, which represents a strong chemical union



Dr. M. Blique, France



Dr. M. Basso, Italy

Moisture tolerance allows placement without the need for isolation or rubber dam.

- Aesthetic white colour or light pink colour for visualisation and monitoring

- Work at your own pace: self-set in 4 minutes or accelerated command set in just 20 to 40 sec\*



Optimal viscosity for flow and retention where it is placed



Dr. E. Van Amerongen,  
The Netherlands

\*Accelerated command set is only possible with Fuji TRIAGE Pink

Fuji TRIAGE is a versatile product for the prevention and control of caries. It is specifically designed to preserve healthy tooth structure and to promote remineralisation.

## Caries stabilisation

When a patient presents multiple active lesions, the use of Fuji TRIAGE will **seal** open cavities and **arrest** caries progression. Caries stabilisation techniques are particularly helpful when treating **elderly, dental phobic, medically compromised and very young patients.**

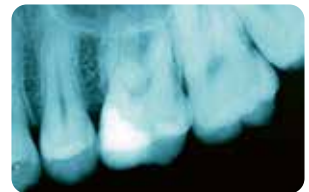


Dr. H. Ngo, Australia

Only soft dentine is removed using an ultra-slow hand piece or hand instruments. Two mm of clean margins will be prepared at the periphery for an optimized seal. Fuji TRIAGE will seal the demineralised dentine.

## Indirect pulp capping

In very deep cavities the layer of **softer demineralised dentine above the pulpal floor is left intact** to avoid pulpal exposure,\*\* and to **provide the opportunity for internal remineralisation.**



Dr. H. Ngo, Australia

Fuji TRIAGE is placed to create an effective seal and allow the dentine overlying the pulpal floor to heal.

## Minimal invasive restorations

The increasing use of **minimal preparation techniques** has created the need for a **more flowable** glass ionomer that **adapts well to micro-prepared cavities.** Fuji TRIAGE White is the preferred solution due to its viscosity, fast set, smooth surface finish and aesthetics.



Dr. M. Basso, Italy

Micro preparation can be performed using ultra-fine diamond burs, air abrasion or ozone therapies.

\*\* Providing the patient does not present with symptoms of irreversible pulpitis

a wide range of clinical situations

## Root surface protection and cervical erosion

**Exposed root surfaces** are at risk of **demineralisation associated with caries and erosion**. It is now possible to **actively protect** these at-risk surfaces by applying a thin film of Fuji TRIAGE onto the root surface.



Dr. H. Ngo, Australia

Root surface protection should be monitored, especially in patients with reduced saliva flow and diminished buffering capacity.

## Hypersensitivity treatment

Fuji TRIAGE's chemically-fused seal stops the flow of fluid in the dentinal tubules, thereby providing **instant and long-lasting relief from hypersensitivity**.



Dr. J. Frencken,  
The Netherlands

Seal then dentinal tubules with Fuji TRIAGE without prior etching or bonding.

## Intermediate restorations

Fuji TRIAGE is a great evidence-based choice for temporary and intermediate restorations. It provides superior protection against bacteria compared to zinc oxide/eugenol and zinc phosphate cements. Fuji TRIAGE also helps prevent secondary caries.



Dr. Jo Lasfargues, France

Using the light pink shade, Fuji TRIAGE is clearly identifiable to the patient as a temporary solution. If preferred, Fuji TRIAGE White can be used.

## Temporary endodontic sealing

When applied immediately after root canal filling, Fuji TRIAGE will ensure **an effective coronal seal** against microleakage.



Dr. A. Baraba, Croatia

After root canal therapy, Fuji TRIAGE is an ideal base for lamination, e.g., under composite restorations.

## Protect vulnerable Molars at the earliest stage

Protecting the newly-erupted immature molar, which is highly vulnerable to acid attack during the first 12 to 18 months, is critical.

In contrast to composite resins, Fuji TRIAGE bonds chemically to enamel and dentine in a moist environment and also protects the tooth surface from acid and bacterial attack.

### Fissure sealing



The thin nozzle and fluidity of Fuji TRIAGE help it penetrate into deep fissures. Several applications are possible with just one capsule.



The pink colour helps visualisation during placement and monitoring, and facilitates communication.

Dr. M. Blique, France

### Protection of hypomineralised molars (MIH)



Teeth with MIH are highly susceptible to post-eruptive breakdown and caries.



The fast and easy application is perfect for first-line treatment. Fuji TRIAGE bonds well to aprismatic enamel.

Prof. P. Gatón Hernández, Spain

## Simple and effective protection for young patients



# Maximum surface protection in a few easy steps



1. Mechanically remove plaque from the fissures using a brush cone.



2. Apply GC Dentin Conditioner to further clean the occlusal surface. Avoid over-drying the surface after rinsing.



3. Spread a thin film of Fuji TRIAGE over the occlusal surface, including pits and fissures.



4. Command set activation (accelerated self-set) in 20 – 40 seconds\* or self-set in 4 minutes.



5. Apply GC Fuji Varnish or GC Fuji Coat LC immediately following placement.

Dr. E. Van Amerongen,  
The Netherlands

\* Accelerated command set is only possible with Fuji TRIAGE Pink



## GC Fuji TRIAGE

### Fuji TRIAGE Capsules

50 capsules, (mixed volume per capsule 0.13 ml)

### Fuji TRIAGE Powder Liquid

1-1 package: 15 g powder, 10 g (8 ml) liquid, 6 g (5.7 ml) Dentin Conditioner, powder scoop, mixing pad

Available in White and Pink.

### Accessories for optimal results

To increase adhesion:

GC Cavity Conditioner / GC Dentin Conditioner

To prevent dehydration after the initial set:

GC Fuji Varnish / GC Fuji Coat LC

#### GC EUROPE N.V.

Head Office  
Researchpark,  
Haasrode-Leuven 1240  
Interleuvenlaan 33, B-3001 Leuven  
Tel. +32 16 74 10 00  
Fax.+32 16 40 48 32  
info.gce@gc.dental  
<https://www.gc.dental/europe>

#### GC UNITED KINGDOM Ltd.

Coopers Court Newport Pagnell  
Buckinghamshire  
MK16 8JS  
United Kingdom  
Tel. +44 1908 218 999  
Fax.+44 1908 218 900  
info.uk@gc.dental  
<https://www.gc.dental/europe/en-GB>