



G-ænial Universal Injectable

Syringe	Unitip	Shade
1ml (1.7g)	15x0.16ml (0.27g)	
901471	10006910	XBW
901472	10006911	BW
901473	10006896	A1
901474	10006897	A2
901475	10006898	A3
901476	10006899	A3.5
901477	10006900	A4
901478	10006901	B1
901479	10006902	B2
901480	10006903	CV
901481	10006904	CVD
901482	10006905	AO1
901483	10006906	AO2
901484	10006907	AO3
901485	10006908	JE
901486	10006909	AE



everX Flow Syringe 2ml (3.7g)

012898	Bulk shade
012899	Dentin shade



EQUIA Forte HT

901574	Intro Pack, 20 capsules A2 + 20 unitdoses of coat
901575	Intro Pack, 20 capsules A3 + 20 unitdoses of coat
901576	Intro Pack, 20 capsules B2 + 20 unitdoses of coat
901577	Promo Pack, 100 capsules A2 + 1 bottle of coat, 4ml
901578	Promo Pack, 2x50 capsules A2-A3 + 1 bottle of coat, 4ml
901579	Promo Pack, 100 capsules A3 + 1 bottle of coat, 4ml
901580	Promo Pack, 2x50 capsules A3-B2 + 1 bottle of coat, 4ml
901581	Clinic Pack, 200 capsules A2 + 1 bottle of coat, 4ml
901582	Clinic Pack, 200 capsules A3 + 1 bottle of coat, 4ml
901583	Clinic Pack, 200 capsules B2 + 1 bottle of coat, 4ml

Related products



G-Premio BOND
Universal bonding agent



G2-BOND Universal
Two-step universal bonding agent



G-ænial A'CHORD
Universal direct restorative

EQUIA Forte, everX Flow and G-ænial are trademarks of GC.

GC EUROPE N.V.
Head Office
Researchpark
Haasrode-Leuven 1240
Interleuvenlaan 33
B-3001 Leuven
Tel. +32.16.74.10.00
Fax. +32.16.40.48.32
info.gce@gc.dental
<https://europe.gc.dental>

GC UNITED KINGDOM Ltd.
Coopers Court
Newport Pagnell
UK-Bucks. MK16 8JS
Tel. +44.1908.218.999
Fax. +44.1908.218.900
info.uk@gc.dental
<https://europe.gc.dental/en-GB>

ZOLFEN 2115.06/22



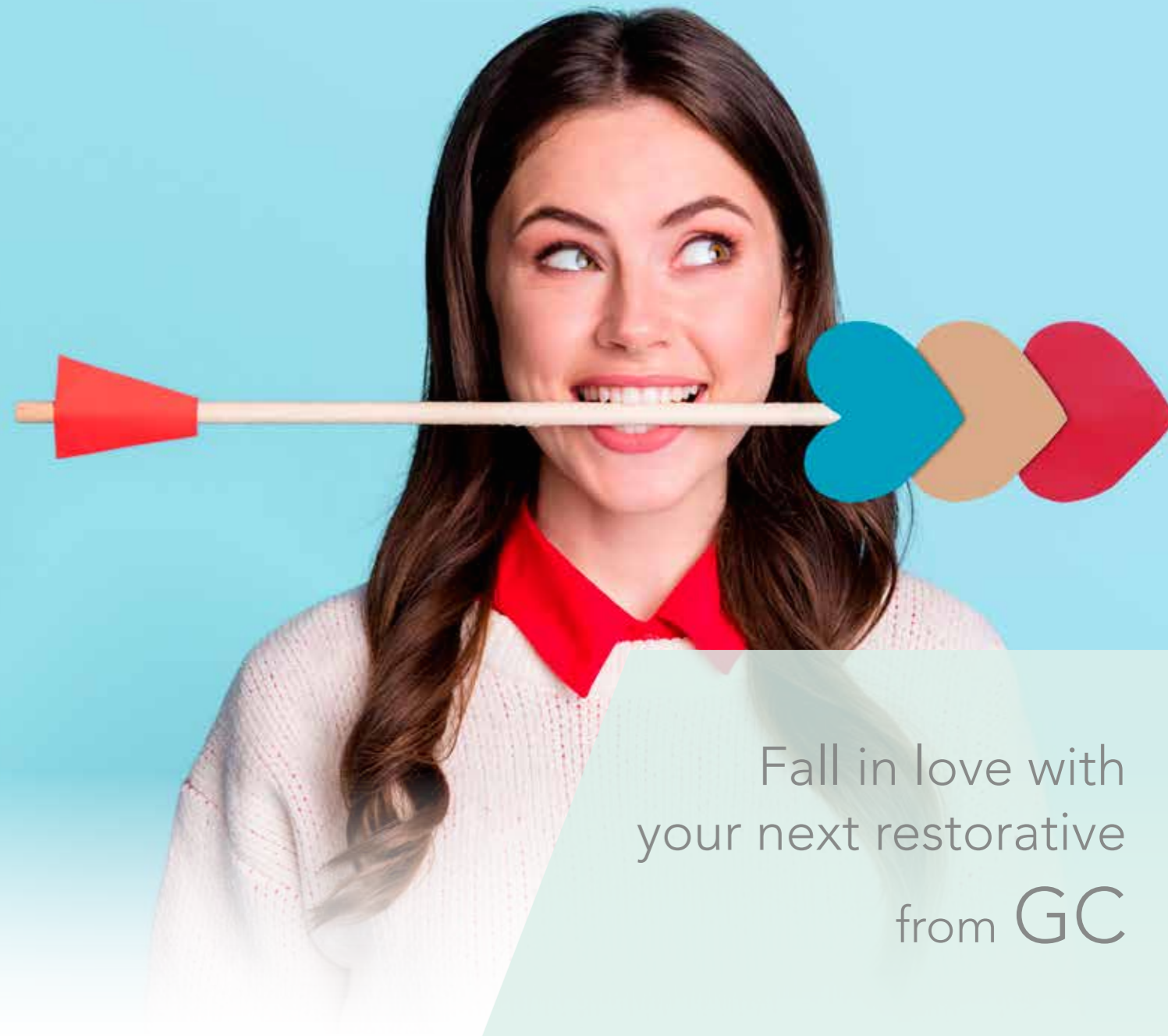
everX Flow™
Fibre-reinforced flowable composite for dentine replacement



G-ænial® Universal Injectable
High-strength restorative composite



EQUIA Forte™ HT
Cost-effective, long-term restorative alternative



Fall in love with
your next restorative
from GC



Since 1921
100 years of Quality in Dental



Every patient is different... and yet the same.


Each time a patient takes place in your chair, your treatment plan needs to be adapted and optimized to deliver the highest quality, time after time, for each and every individual. It's a difficult task that we love to help you with.

Simplified and efficient solutions for posterior restorations

GC products are created with the dentists and patients in mind. This means that we are committed to delivering efficient and easy-to-use products of the highest quality for every indication.

The reinforcing one

everX Flow
Short-fibre reinforced flowable composite



- ✦ Dentine replacement that **strengthens your restorations from within**
- ✦ **Crack-stopping** fibers
- ✦ **Easy bulk placement** up to 5.5 mm
- ✦ **Perfectly adapts** to cavity walls without slumping



Courtesy of Dr. J. Tapia Guadix, Spain
Courtesy of Dr. R. Novotny, Slovakia

Ideal to use for:

- ✦ Endo-treated teeth
- ✦ Large cavities
- ✦ Core build-ups



The injectable one

G-ænial Universal Injectable
High-strength restorative composite



- ✦ **Shape and contour** as you inject
- ✦ So strong, it can be used for **every cavity size**
- ✦ Long bendable tip to **reach every spot**
- ✦ **Unsurpassed polishability**



Courtesy of Dr. M. Kudelis, Lithuania
Courtesy of Dr. M. Peumans, Belgium

Ideal to use for:

- ✦ Cusp-by-cusp technique
- ✦ Injection moulding
- ✦ All direct posterior indications



The effortless one

EQUIA Forte HT
Cost-effective, long-term restorative alternative



- ✦ **Proven glass hybrid technology** with a synergistic protective coat
- ✦ **Biocompatible and moisture-tolerant**
- ✦ Bulk-fill and self-adhesive for **quick and easy placement**
- ✦ Smart strengthening with **ion exchange**



Courtesy of Dr. A. Pael, United Kingdom
Courtesy of Dr. P. Rouas, France

Ideal to use for:

- ✦ Challenging applications
- ✦ MIH
- ✦ Root caries
- ✦ Stamp technique

