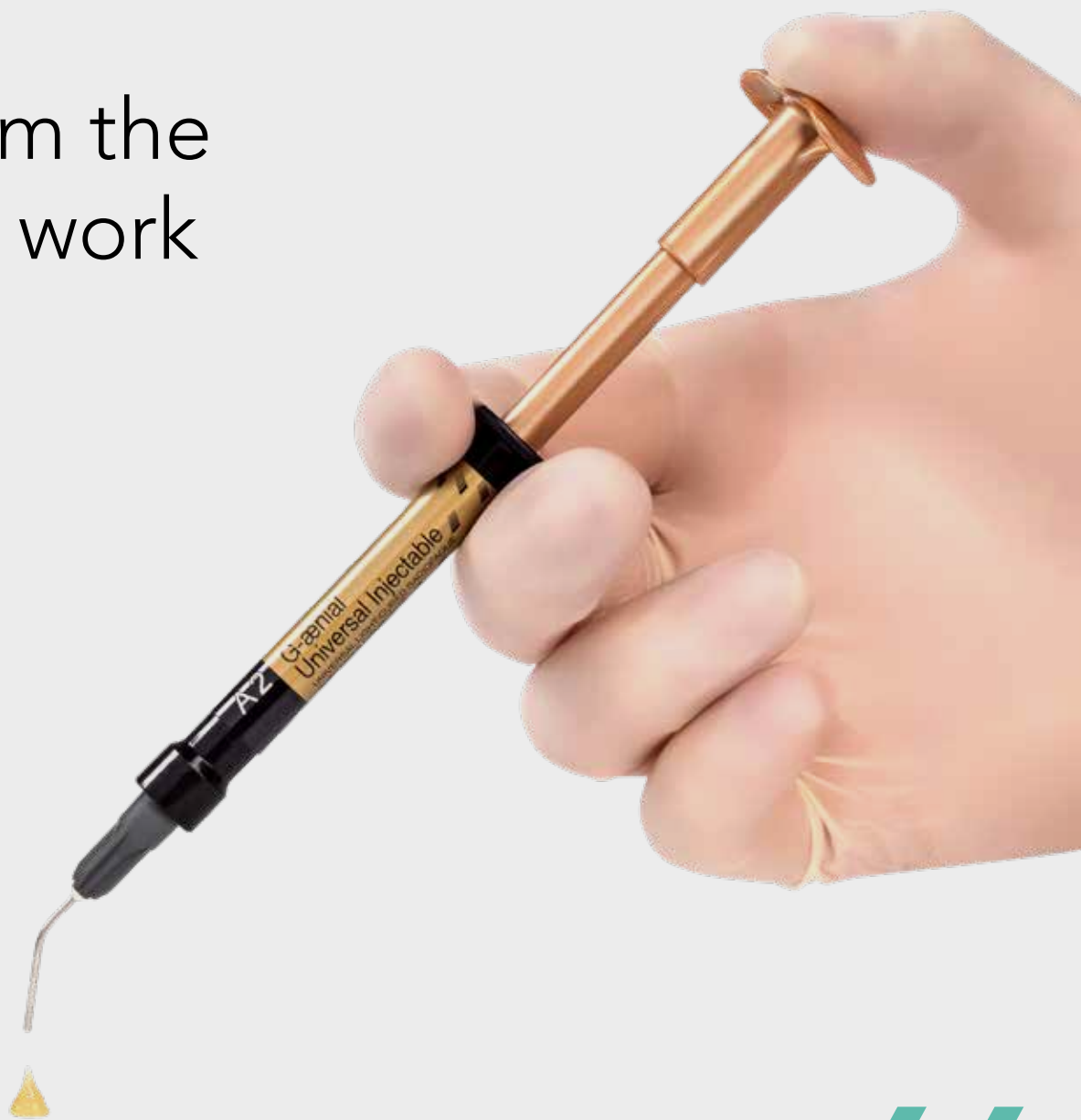


# G-ænial™ Universal Injectable

High Strength Restorative Composite

Transform the  
way you work



Since 1921  
100 years of Quality in Dental



# Welcome to the future

**G-ænial Universal Injectable** is destined to be a game-changer in restorative dentistry. With its unique characteristics it will truly transform the way you work.

World-leading technologies have enabled GC to define a new benchmark composite offering **exceptional strength, unsurpassed polishability** and fantastic, tooth-blending aesthetics.

But you'll be amazed at how it is **injectable and shapeable all at the same time**. It adapts perfectly to the cavity floor, but lets you build, shape and contour while you are injecting – because G-ænial Universal Injectable doesn't slump!

It will also save you time and money because placement is so much faster and because you don't waste any material at all – you only use what is needed.

Try it for yourself and embrace the future!  
You'll never look back.

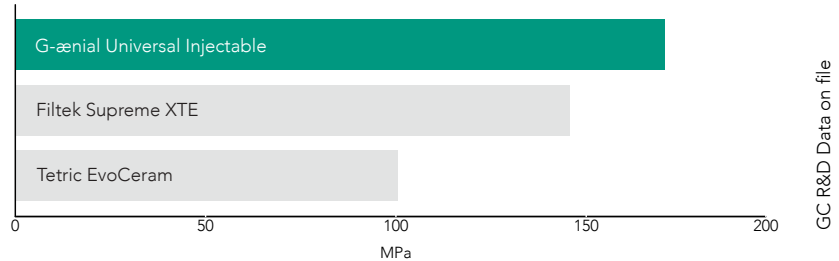


# Our strongest direct restorative ever\*

GC's world-leading filler technologies have allowed us to develop an injectable material that is significantly stronger than most conventional paste composite materials. It's a new paradigm in thinking that a composite with a more flowable consistency is actually your strongest option!

Exceptional  
strength  
and wear  
resistance

Flexural strength



Filtek Supreme XTE & Tetric EvoCeram are not trademarks of GC.

## Inject, shape and contour all at once

Because **G-ænial Universal Injectable** doesn't slump or string, you have total control to adapt, shape and contour as you inject for fast, effortless restorations. It adapts perfectly to the cavity floor and allows you to easily build contours, cusps and even proximal walls.

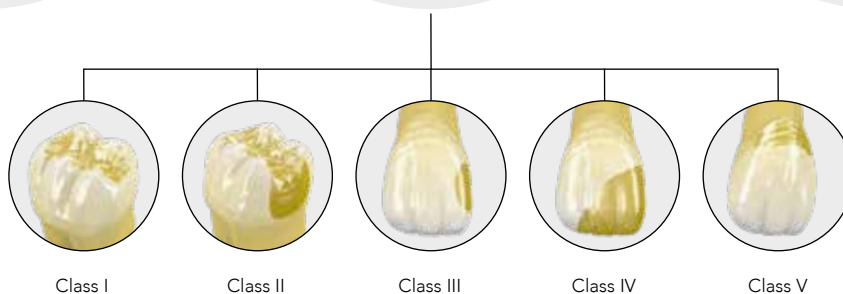
3 steps in 1 –  
shape and  
contour  
as you inject



Unsurpassed  
polishability  
with beautiful  
aesthetics

Universal  
application  
for all cavity  
classes

Faster  
placement  
time with  
no wastage

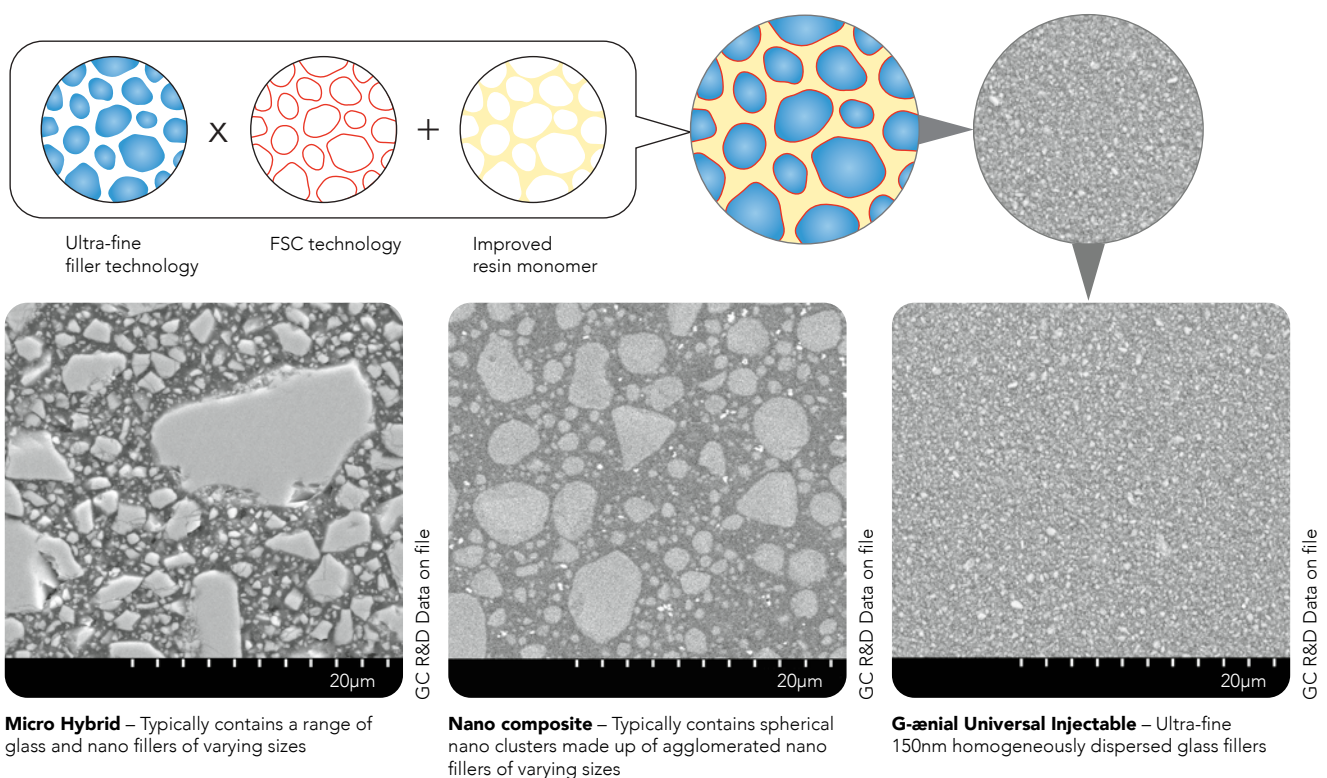


\*based on ISO 4049 testing

# World-leading innovation and technology

Our latest full-coverage silane coating (FSC) technology makes it possible to homogeneously and densely disperse ultra-fine 150nm fillers in the improved resin monomer matrix giving unparalleled strength, durability and energy-absorbing resilience with high radiopacity – 252% AI.

**3 in 1 Technologies** Ultra-fine fillers + Full silane coating + Improved resin monomer



## Innovative syringe design delivers with ease and no slumping

With effortless extrusion, our new syringe is a joy to use - and the bendable tips make precise delivery easy.



# Superior strength, wear resistance and polish retention

**G-ænial Universal Injectable's** high-density structure not only provides exceptional strength, but also greater wear resistance, unmatched high polish retention and high resistance to discoloration for long-lasting aesthetics.

## 3 in 1 Benefits

Exceptional strength

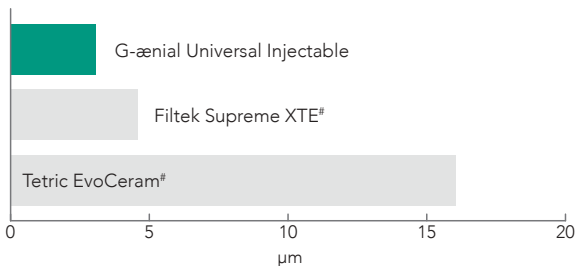


Unsurpassed surface integrity

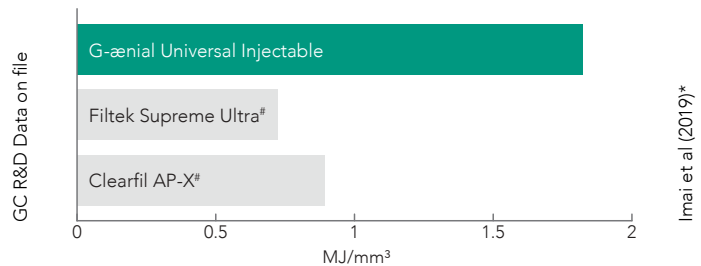


Long lasting aesthetics

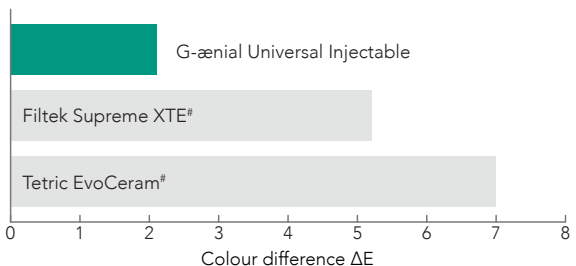
### 3-body wear



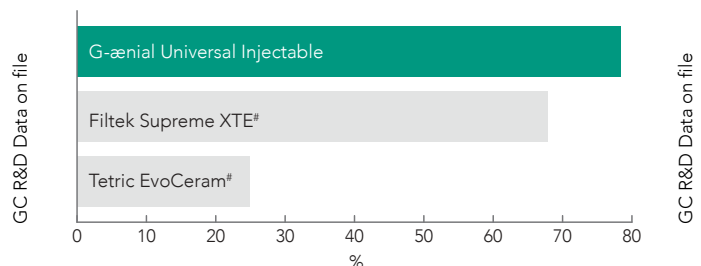
### Resilience (Toughness)



### Discolouration (at 7 days, 2% coffee solution)



### Gloss Retention (After toothbrush wear – 12,000 cycles)



## 3 in 1 Savings

Less time



No waste

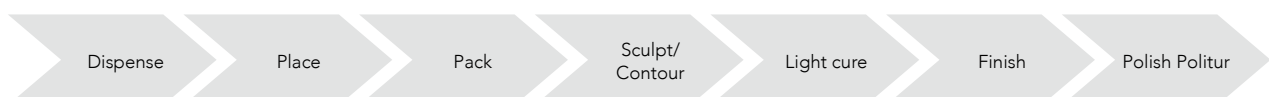


Less stress

## Save time, save material, save stress

With far fewer steps than conventional composite, the time savings for restorations are significant. **G-ænial Universal Injectable** also eliminates wastage. You only use what you need! And because **G-ænial Universal Injectable** doesn't string or slump the whole process is easier and the end result is less stress in your day.

### Conventional pastes



### G-ænial Universal Injectable



# Not trademarks of GC Corporation

\* Interrelation among the handling, mechanical, and wear properties of the newly developed flowable resin composites. Imai et al. Journal of the Mechanical Behavior of Biomedical Materials 89 (2019) 72–80



# Case Studies

## Class II restoration

Dr Javier Tapia Guadix – Spain



1. Removal of the old restoration & caries removal.



2. Undercuts can easily be reached thanks to the bendable tips.



3. Building the proximal wall using the enamel shade JE.



4. Removal of the sectional matrix after building the wall.



5. A class I procedure can now be followed; the dentin layer is created with the A4 shade.



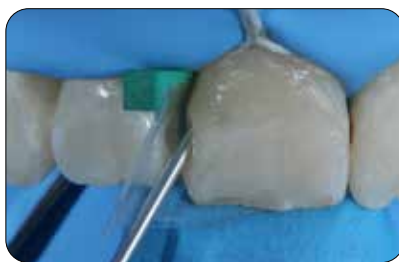
6. Final situation after finishing and polishing of the margins.

## Class III restorations

Dr Ahmed Al-Jaff, Iraq



1. Initial Class III cavities.



2. Injecting G-aenial Universal Injectable (A2).



3. Recall situation showing perfect integration.

## Management of early worn dentition

Dr Anthony Mak – Australia



1. Early wear evident on 40-year old patient needing conservative management.



2. Old composite restorations removed and teeth micro-etched. Build up and restorations on the occlusal surface using alternate teeth technique.



3. Final restorations using a single shade injection technique, shade A1.

## Injection moulding technique

Dr. Ali Salehi – France



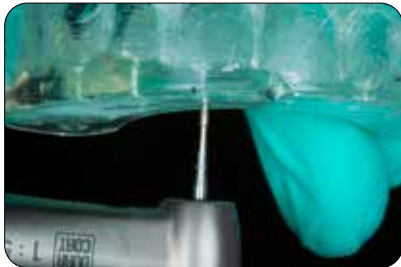
1. Model with wax-up of the desired tooth shape.



2. An impression tray is filled with EXACLEAR.



3. The desired shape is copied. The mould can be easily removed from the impression tray and the model.



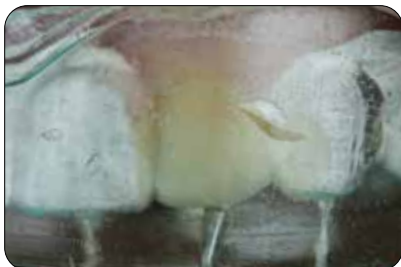
4. Holes are drilled in the EXACLEAR mould through which the composite will be injected.



5. Etching the enamel.



6. Application of the adhesive (G-Premio BOND).



7. Injection of the composite into the mould. This process is repeated for each tooth.



8. Finishing the vestibular and palatal margins.



9. Finishing the approximal margins.



10. Polishing the composite restorations.



11. Result after polishing.



12. Smile after treatment.

# G-ænial™ Universal Injectable

## Ordering information

### Kit

10003753

### Content

Injection Moulding Kit

1x Exaclear cartridge

+ 3x G-ænial Universal Injectable (A1, A2 & A3)

### Syringe

1 mL (1.7g)

### Unitip

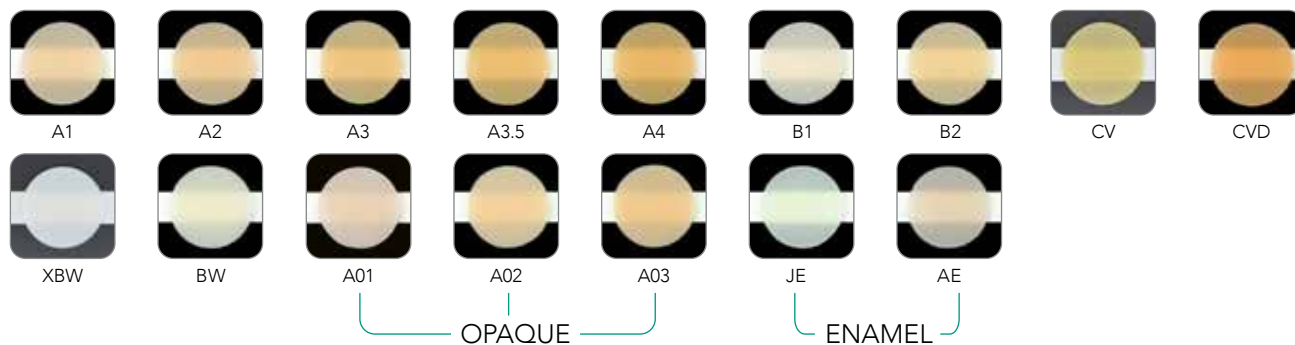
15x0.16mL

### Refill

10003705	10006896	GC G-ænial Universal Injectable, A1
10003706	10006897	GC G-ænial Universal Injectable, A2
10003707	10006898	GC G-ænial Universal Injectable, A3
10003708	10006899	GC G-ænial Universal Injectable, A3.5
10003709	10006900	GC G-ænial Universal Injectable, A4
10003710	10006901	GC G-ænial Universal Injectable, B1
10003711	10006902	GC G-ænial Universal Injectable, B2
10003717	10006908	GC G-ænial Universal Injectable, JE
10003718	10006909	GC G-ænial Universal Injectable, AE
10003714	10006905	GC G-ænial Universal Injectable, AO1
10003715	10006906	GC G-ænial Universal Injectable, AO2
10003716	10006907	GC G-ænial Universal Injectable, AO3
10003704	10006911	GC G-ænial Universal Injectable, BW
10003703	10006910	GC G-ænial Universal Injectable, XBW
10003712	10006903	GC G-ænial Universal Injectable, CV
10003713	10006904	GC G-ænial Universal Injectable, CVD
10003735		GC Dispensing tips long needle, 30 pcs.

### Category

Standard
Standard
Standard
Standard
Standard
Standard
Standard
Enamel
Enamel
Opaque
Opaque
Opaque
Bleach
Bleach
Cervical
Cervical



**DENTAL ADVISOR**  
Product insights you can trust.

"This material adapts beautifully and it retains cusp form without slumping"

"I was surprised at how well it flowed into deep restorations"

"Cuts restoration time very significantly and drastically reduces finishing time"

### GC EUROPE N.V.

Head Office  
Researchpark,  
Haasrode-Leuven 1240  
Interleuvenlaan 33, B-3001 Leuven  
Tel. +32 16 74 10 00  
Fax. +32 16 40 48 32  
info.gce@gc.dental  
<https://www.gc.dental/europe>

### GC UNITED KINGDOM Ltd.

Coopers Court Newport Pagnell  
Buckinghamshire  
MK16 8JS  
United Kingdom  
Tel. +44 1908 218 999  
Fax. +44 1908 218 900  
info.uk@gc.dental  
<https://www.gc.dental/europe/en-GB>