

One and
only **G-BOND™**
from GC.

GC



GC G-BOND™ Bottle Kit

Contains: One 5 ml bottle of G-BOND, one package of 50 micro-tips, one micro-tip handle, one dispensing dish and technique card.



GC G-BOND™ Unit Dose Kit

Contains: 50 x 0.1 ml Unit Doses of G-BOND, one package of 50 green disposable applicators and technique card.

Aesthetics made easy with **GC**.



GC GRADIA DIRECT

A light-cured composite for dentists to create quickly and easily, natural-looking, high performance anterior or posterior restorations. A simple single shade technique is usually sufficient but when required a selection of special shades can be added.



GC GRADIA DIRECT Flo

A micro-filled hybrid resin for lining cavities beneath GRADIA DIRECT. It has a free-flowing, no-run/no-stick formula that shapes perfectly to cavity walls, it is radiopaque and light-curable.

GC EUROPE N.V.
Head Office
Researchpark Haasrode-Leuven 1240
Interleuvenlaan 33
B - 3001 Leuven
Tel. +32.16.74.10.00
Fax. +32.16.40.48.32
info@gceurope.com
http://www.gceurope.com

GC

GC UNITED KINGDOM Ltd.
12-15, Coopers Court
Newport Pagnell
UK - Bucks. MK16 8JS
Tel. +44.1908.218.999
Fax. +44.1908.218.900
info@uk.gceurope.com
http://uk.gceurope.com

z O LF EN 8 55 10/10

One and only
G-BOND™ from GC.

One-component, one-coat bonding system
for light-cured composites

Advanced 7th generation bonding with
"nano-interaction" technology

GC

The **ONLY** ONE
you need –
so why waste
anymore time?



G-BOND in less than 30 seconds
you're done and
ready to move on.

A one-component, one-coat, advanced seventh generation bonding system, G-BOND gives you a strong, long-lasting bond between light-cured composite and both enamel and dentin, very quickly and very easily. And this time after time because it's unlike any other bonding system available. With G-BOND you can etch, desensitize, prime and bond, all with just ONE coat.

G-BOND is not technique sensitive so you don't have to worry about 'how wet' or 'how dry' the tooth surface is or whether it's 'over-etched' or 'under-etched', taking the guesswork out of the procedure. G-BOND is very easy to use, simply brush the formulation onto the tooth's bonding

surface, wait 5–10 seconds, then air thin with high pressure syringe air and light-cure for 10 seconds.

Try NEW easy-to-use G-BOND today and save time, prevent sensitivity and obtain reliable bonding without the guesswork.



Apply one coat of G-BOND with a brush to both dentine and enamel



Leave undisturbed for 5–10 seconds



Thin with high pressure syringe air



Light cure

No post-operative sensitivity

Because the dentin tubules are never exposed, G-BOND virtually eliminates post-operative sensitivity. G-BOND's 5% filler further seals the tubules and decreases pulpal sensitivity.

Nano-interaction technology

The success of G-BOND lies in its ability to form a non-conventional interface with the dentin with minimal decalcification and almost no exposure to collagen fibres. We call this interface a "nano-interaction zone" or NIZ. This nano-level reaction produces an insoluble calcium compound for a better bond that is less likely to deteriorate due to oral enzymes.

Strong, reliable, consistent bond

Whether wet or dry, on dentin or enamel, G-BOND produces a strong mechanical bond as well as, and more importantly, a reliable, consistent chemical bond thanks to a highly advanced formulation that contains phosphoric ester monomer for superior bonding strength to enamel, and 4-met monomer for adhesion to dentin.

Remarkably thin, bubble free bonding layer

G-BOND's nano-interaction technology creates a thin bonding layer of less than 300 nm. After application, maximum airflow will eliminate all air bubbles resulting in a thin layer that offers numerous advantages, including a frosty surface for much easier application of the first composite layer.

HEMA-free

While other products continue to use HEMA for its wetting properties, GC recognised that HEMA stays hydrophilic after polymerisation and so leading to water uptake, discoloration and possible loss of retention. G-BOND contains no HEMA in its formulation, resulting in strong durable adhesion properties.

Stable and simple to store

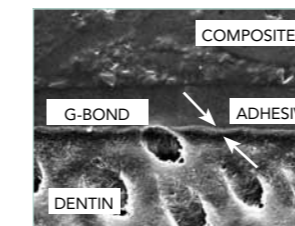
G-BOND is an extremely stable material and can be stored at room temperature for up to two years. The bottle cap should be replaced immediately after use.



Dentin surface after G-BOND application: (7000x SEM) shows demineralised smear sealing effect on the dentinal tubules



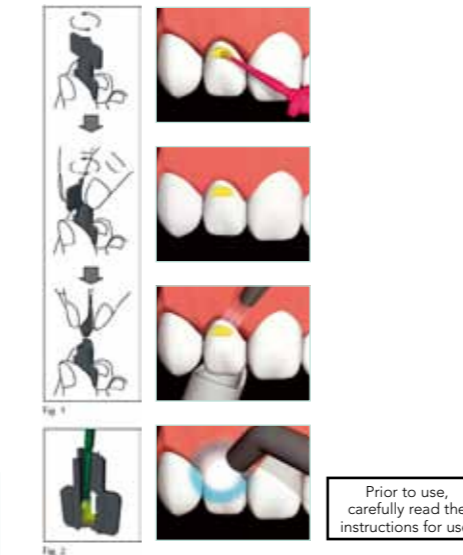
Enamel after G-BOND application: (7000x SEM) shows demineralisation of the smear layer and enamel crystal formations



G-BOND's bubble free interface and nano-interaction zone (NIZ) (less than 300 nm)



G-BOND's frosty surface for much easier application of the first composite layer



Prior to use, carefully read the instructions for use.

G-BOND™ Unit Dose ONE COMPONENT SELF-ETCHING LIGHT-CURED ADHESIVE

For use only by a dental professional in the recommended indications.

RECOMMENDED INDICATIONS

- Bonding of light cured composites and acid modified composites (compomers) to tooth structure.
- Bonding of dual cured luting and core build up composites to tooth structure as long as these materials are light cured.

CONTRAINDICATIONS

- Pulp capping.
- In rare cases the product may cause sensitivity in some people. If any such reactions are experienced, discontinue the use of the product and refer to a physician.

NOT TO BE USED

- In combination with chemically cured composite resin.
- In combination with eugenol containing materials as eugenol may hinder G-BOND from setting or bonding properly.
- In combination with desensitizers as desensitizers may hinder G-BOND from setting or bonding properly.
- In combination with dual cured luting and core build up composites in case these materials will not be light cured.

DIRECTIONS FOR USE

- CAVITY PREPARATION
Prepare tooth using standard techniques. Use rubber dam for protection. Dry the prepared tooth surfaces by gently blowing with an air syringe.
Note: For pulp capping, use calcium hydroxide.
- APPLICATION
a) Unscrew cap anticlockwise (Fig. 1).
b) Using the disposable applicator provided, mix the liquid thoroughly for 5 seconds as illustrated (Fig. 2), making sure to combine liquid from top and bottom of the container.
c) Immediately apply to the prepared enamel and dentin surfaces using the disposable applicator (Fig. 3).
d) Leave undisturbed for 5–10 seconds (Fig. 4).
e) Then, dry thoroughly for 5 seconds with oil free air under MAXIMUM air pressure. Use vacuum suction to prevent splatter of the adhesive (Fig. 5). The final result should be a thin, rough, adhesive film with the appearance of frosted glass and which does not visibly move under further air pressure.

Note:

- When removing from refrigerator after long term storage, leave the G-BOND Unit Dose to stand at room temperature for several minutes prior to use.
- When opening the cap, make sure to identify the top and bottom of the unit dose capsule.
- If the cap of the unit dose is too tight to open, do not try to open it with force. Use another unit dose.
- Non cut enamel should be treated with a 35–40% phosphoric acid gel, rinsed with water and gently dried before using G-BOND.
- Apply G-BOND immediately as the material contains a volatile solvent.
- Remove excess material remaining on the tooth (other than the surfaces to be bonded) using a sponge or cotton pellet as residue material is hard to remove after light curing.
- Should the applied material be contaminated with water, blood or saliva prior to light curing, wash and dry the tooth and repeat the procedure by re-applying material.

3. LIGHT CURING

Light cure using a visible light curing unit (Fig. 7).
Irradiation time
Halogen (700 mW/cm²): 10 seconds
Plasma Arc (2000 mW/cm²): 3 seconds
LED (700 mW/cm²): 10 seconds
In case where the light guide tip is more than 10 mm away from the surface to be irradiated, light cure for the following time.

Halogen (700 mW/cm²): 20 seconds
Plasma Arc (2000 mW/cm²): 6 seconds
LED (700 mW/cm²): 20 seconds

Note:

- Light cure completely for an effective bonding strength.
- Use a protective light shield or similar protective eye wear during light curing.

4A. PLACEMENT OF LIGHT-CURED COMPOSITES AND COMPOMERS

After having light cured the adhesive, follow manufacturer's instructions for use in order to place, contour and light cure the composite resin material of choice.

4B. PLACEMENT OF DUAL CURED COMPOSITES

After having light cured the adhesive, make sure to light cure the dual cured composite material separately. Self curing only will result in improper adhesion.

5. FINISHING

Adjust restoration and polish using standard techniques.

STORAGE

If not in use for a prolonged period of time, store in refrigerator, otherwise store at room temperature (1–28°C (33.8–82.4°F)).
Shelf life: 2 years from date of manufacture.

CAUTION

- G-BOND is flammable. Do not use near naked flame. Keep away from sources of ignition. Do not store large quantities in one area. Keep away from direct sunlight.
- G-BOND is volatile. Use in a well ventilated place.
- This material is disposable. Do not recap or reuse.
- In case of contact with eyes, flush immediately with water and seek medical attention.
- In case of contact with oral tissue or skin, immediately remove with a sponge or cotton pellet. After the restorative treatment is finished, rinse thoroughly with water.
- If the tissue contacted by the material turns white or forms a blister, advise the patient to leave the affected area undisturbed, until the mark disappears, usually in 2–3 days. To avoid contact, it is recommended to apply cocoa butter to the area where rubber dam cannot cover.
- Avoid inhalation or digestion of material.
- When spilt on the table or floor, immediately wipe off with a dry cloth.
- Do not mix with other products.
- Dispose of all waste according to local regulations.

MANUFACTURED by
GC CORPORATION, 76-1 Hasunuma-cho, Itabashi-ku, Tokyo, Japan 174-8585

DISTRIBUTED by
GC CORPORATION, 76-1 Hasunuma-cho, Itabashi-ku, Tokyo, Japan 174-8585

GC EUROPE N.V., Research-Park, Interleuvenlaan 33, B-3001 Leuven, Belgium,
TEL +32.16.74.10.00

GC AMERICA INC., 3737 West 127th Street, Alsip, IL 60803 U.S.A., TEL +1-708-597-0900

GC ASIA DENTAL PTE. LTD., 19 Loyang Way, #06-27 Singapore 508724, TEL +65 6546 7588