

# Smart Solutions from GC

for all your luting challenges

## Let's Join Forces!



# How to choose the optimal luting cement?

Today more than ever you are spoiled for choice when planning and delivering indirect restoration. From the moment your patient comes in, you have much to consider before deciding on the treatment plan.

As a dentist you know that no two patients are alike and it is therefore important to follow a holistic approach in treatment planning considering the choice of indirect restoration and type of preparation which is best suited to the patient's clinical situation.

An important part of this process is choosing the right luting cement



The key questions you should ask before making the final choice are:  
Which is the optimal luting cement to help me

Protect  
the tooth  
structure?

Protect  
the prosthetic  
restoration?

The selection of the optimal luting cement is the guarantee for a beautiful smile and long-term patient satisfaction



# Discover our High 5 solutions for all your luting challenges

With more than 100 years of experience and one of the most comprehensive product portfolios, we at GC believe we are the ideal partner to guide you towards the most appropriate luting solution.

Because after all, efficient luting is a team effort.

Each of the GC luting solution is suited to different clinical situations and offers you their unique features like physical properties, working time, protocol of use and cost...

- G-CEM ONE
- G-CEM Capsule



Universal self-adhesive resin cement



Adhesive resin cement

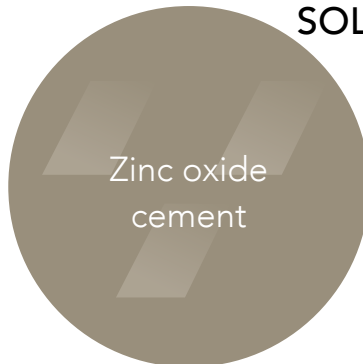
- G-CEM LinkForce (dual-cure)
- G-CEM Veneer (light-cure)



Resin-modified glass ionomer (RMGI) cement

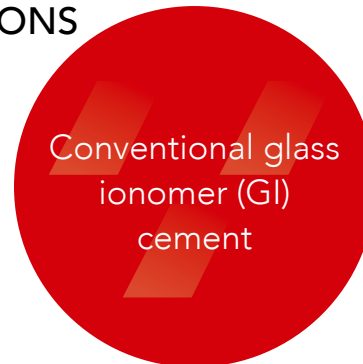
- GC Fuji PLUS
- GC FujiCEM 2
- GC FujiCEM Evolve

HIGH  
5  
GC LUTING SOLUTIONS



Zinc oxide cement

- FREEGENOL TEMPORARY PACK



Conventional glass ionomer (GI) cement

- GC Fuji I
- GC Fuji TEMP LT

Let's Join Forces!

Download the GC Luting Guide



Depending on the clinical situation, the first question you should ask yourself is: Should I CEMENT or BOND?

# When to cement?

Cementation is typically used when your preparations allow mechanical retention.

The following clinical aspects will define your choice for the optimal CEMENTATION procedure:

## Retentive Preparation



Select **GI** & **RMGI** cement that offers the best balance of ease of use, speed and tooth protection.

## Isolation not possible



Select **GI** or **RMGI** cement as they offer moisture tolerance with excellent chemical adhesion to the tooth.

## Moderate aesthetics needed



Select **GI** or **RMGI** cement when your clinical situation and/or selected substrate (zirconia, metal & porcelain fused to metal) does not require a very high aesthetic cement.

## Patients with special needs



Select **GI** or **RMGI** cement for high caries risk and geriatric patients.

## Your options

Conventional glass ionomer (GI) cement | GC's solution: **GC Fuji I**  
Resin-modified glass ionomer (RMGI) cement | GC's solutions: **GC Fuji PLUS**,  
**GC FujiCEM 2** and **GC FujiCEM Evolve**.

Source: Dr Lucile Dahan, France (1) and Prof Jean-François Lasserre, France (2, 3 and 4)

"Most of the time the margins of the preparation are subgingival and total control of humidity proves to be difficult!"

DR LUCILE DAHAN, FRANCE

# When to bond?

Bonding is typically used when extra adhesion is required or when aesthetics are of the utmost importance.

## Preparation is not retentive



Select **adhesive resin cement** or **universal self-adhesive cement with tooth primer** when the preparation is not retentive.

**Self-adhesive cement alone** (ease of use) can be used for moderate retentive preparations.

## Isolation possible



Select **self-adhesive** or **adhesive resin cement** when a dry working field can be assured.

## High aesthetic needed



Select **self-adhesive** or **adhesive resin cement** for highly aesthetic outcomes.

## Extra adhesion needed



Select **adhesive resin cement** or **universal self-adhesive cement with tooth primer** or **adhesive** for bonding veneers and hybrid ceramics (e.g. CERASMART270).

## Your options

Self-adhesive resin cement | GC's solutions: **G-CEM ONE** and **G-CEM Capsule**

Universal self-adhesive resin cement with tooth primer | GC's solution: **G-CEM ONE** with **G-CEM ONE Adhesive Enhancing Primer** or **G-CEM ONE** with **G-Premio BOND**

Adhesive resin cement | GC's solutions: **G-CEM LinkForce** (dual-cure) and **G-CEM Veneer** (light-cure)

Source: Prof Jean-François Lasserre, France (1, 2 and 3)

# Discover all of our luting solutions!

With one of the most comprehensive luting portfolios, we at GC can help you maintain your patient's smile.



## Our solutions for permanent cementation

Glass ionomer based cements	Composite resin based cements
<p><b>GC Fuji™ I</b></p>  <p>Conventional glass ionomer (GI) cement</p> <ul style="list-style-type: none"> <li>• Cost-effective solution</li> <li>• Resin-free cement</li> </ul> <p><b>Page 7</b></p>	<p><b>G-CEM ONE™ &amp; G-CEM™ CAPSULE</b></p>  <p>(Universal) Self adhesive resin cement</p> <ul style="list-style-type: none"> <li>• Efficient self-cure mode</li> <li>• Easy-to-use</li> </ul> <p><b>Page 10</b></p>
<p><b>GC Fuji PLUS®</b></p>  <p>Resin-modified glass ionomer (RMGI) cement</p> <ul style="list-style-type: none"> <li>• Long-term clinical success</li> <li>• Worry-free cement</li> </ul> <p><b>Page 8</b></p>	<p><b>G-CEM LinkForce™ (dual-cure)</b></p>  <p>Adhesive resin cement</p> <ul style="list-style-type: none"> <li>• High adhesion</li> <li>• High aesthetics</li> </ul> <p><b>Page 11</b></p>
<p><b>GC FujiCEM™ 2</b> <b>GC FujiCEM™ Evolve</b></p>  <p>Resin-modified glass ionomer (RMGI) cement</p> <ul style="list-style-type: none"> <li>• Easy-to-use</li> <li>• Versatile</li> <li>• High bond to zirconia</li> </ul> <p><b>Page 9</b></p>	<p><b>G-CEM® Veneer (light-cure)</b></p>  <p>Adhesive resin cement for restoration lower than 2 mm thick</p> <ul style="list-style-type: none"> <li>• High aesthetics</li> <li>• Easy placement</li> </ul> <p><b>Page 12</b></p>

## Our solutions for temporary cementation

Zinc oxide cement	Conventional glass ionomer cement
<p><b>FREEGENOL TEMPORARY PACK</b></p>  <p><b>Page 13</b></p>	<p><b>GC Fuji TEMP LT®</b></p>  <p><b>Page 13</b></p>



# GC Fuji I

Conventional Glass Ionomer cement

The biocompatible, resin-free luting solution with 25 years of great clinical success.

GC Fuji I, GC's first luting GI cement, is widely used across the world. Discover why GC Fuji I is still a material of choice.



Cost-efficient solution



Resin-free cement for patients allergic to methacrylate (resin)



Good solution for cementation on implant abutments. Easy removal of excesses considerably reduces the risk of peri-implantitis.

Source: Dr Emmanuel d'Incau, France

## Key clinical advantages

- Chemical adhesion to tooth structure, ensuring an excellent marginal seal
- Moisture-tolerant solution when a dry field cannot be assured
- Quick and easy without the need for etching and bonding steps of the tooth
- Resin-free cement for patients allergic to methacrylate (resin)
- Virtually no post-operative sensitivity: a pulp friendly solution

## Practical advantages

- Cost efficient and easy-to-use solution for metal-based-restorations
- Economic consideration: €€€€€€

## Shade range

- Powder/Liquid: Light yellow
- Capsules: Light yellow

## Clinical applications

	Metal / PFM	Zirconia / Alumina
Inlays / onlays	●	N.A.
Crowns / bridges	●	●
Posts/ inlay cores	●	-

"GC Fuji I is perfectly indicated for the permanent cementation of fixed elements on implant abutments. The removal of excess is simple and easy to control, thereby reducing the risk of peri-implantitis."

DR EMMANUEL D'INCAU, FRANCE

# GC Fuji PLUS

Resin-Modified Glass Ionomer cement



Long-term clinical success



Perfect balance between protection of the tooth and adhesion



Easy removal of excess



Predictable and worry-free solution

## Efficient and proven over 20 years - a predictable, worry-free solution.

GC Fuji PLUS is one of the most well-known products and it is considered a benchmark material in its class, offering the tooth protection of a glass ionomer cement balanced with the strength and aesthetics of a resin cement.

### Key clinical advantages

- Chemical adhesion to tooth structure, ensuring an excellent marginal seal
- Moisture-tolerant solution when a dry field cannot be assured
- Quick and easy: no need for etching and bonding of the tooth
- Rubbery consistency for easy removal of excess
- Virtually no post-operative sensitivity: a pulp friendly solution

### Practical advantages

- Proven and predictable performance for most routine cases
- Available in different shades
- Also available in extended working time (EWT) version for long-span bridges
- Economic consideration: €€€€€€

### Shade range

- Powder/Liquid: A3, Yellow, Translucent
- Capsules: A3, Yellow

### Clinical applications

	Metal / PFM	Feldspathic / leucite ceramics* (e.g. GC Initial LRF)	Lithium Disilicate (e.g. GC Initial LiSi Press & LiSi Block)	Zirconia / Alumina	Composite / Fibre-reinforced resin
Inlays / onlays	●	● (inlays)	●	N.A.	●
Crowns / bridges	●	-	●	●	●
Posts/ inlay cores	●	N.A.	N.A.	●	●

“Our office has been using GC Fuji Plus for almost 2 decades. I don’t remember any failure yet and we have cemented more than 5000 crowns & bridges!”

DR HAN HEESEN, NETHERLANDS

\* Feldspathic & leucite-reinforced ceramics



# GC FujiCEM 2 / GC FujiCEM Evolve

Resin-Modified Glass Ionomer cement

Simplicity is innovation!

The resin-modified glass ionomer cement in paste-paste delivery form. This easy-to-use and versatile luting cement is your perfect partner for most of your routine cementation.



Handmix

Automix



Easy dispensing

Easy removal of excess of GC FujiCEM Evolve

Source: Dr J. Tapia Guadix

## Key clinical advantages

- Chemical adhesion to tooth structure, ensuring an excellent marginal seal
- Moisture-tolerant: a "must-have" when moisture control cannot be guaranteed
- Quick and easy: no need for etching and bonding of the tooth
- Rubbery consistency for easy removal of excess, with tack-cure option for GC FujiCEM Evolve
- Virtually no post-operative sensitivity: a pulp friendly solution
- Strong bonding to restorative, mainly Zirconia for GC FujiCEM Evolve

## Practical advantages

- Choose from handmix or automix: the choice is yours!
- Economic consideration: €€€€€€

## Shade range

- GC FujiCEM 2: Light yellow
- GC FujiCEM Evolve: Universal

## Clinical applications

	Metal / PFM	Feldspathic / leucite ceramics* (e.g. GC Initial LRF)	Lithium Disilicate (e.g. GC Initial LiSi Press & LiSi Block)	Zirconia / Alumina	Composite / Fibre-reinforced resin
Inlays / onlays	●	● (inlays)	●	N.A.	●
Crowns / bridges	●	-	●	●	●
Posts/ inlay cores	●	N.A.	N.A.	●	●

"GC FujiCEM Evolve is a very user-friendly luting agent, combining ease of use, moisture tolerance and versatility. It is ideal to cement both zirconia and metal-ceramic restorations, particularly in the presence of iuxta- and sub-gingival margins. Furthermore, cement excess removal is extremely easy and safe and field isolation is not mandatory. A smart material to make cementation procedures easier and quicker."

PROF ROBERTO SORRENTINO, ITALY

\* Feldspathic & leucite-reinforced ceramics

# G-CEM ONE

Universal self-adhesive resin cement



Flexible: Optional fully-adhesive protocol provides optimal bond strength in retentive and non-retentive indications.



Easy excess removal with the option of tack curing



Long-lasting aesthetic results

## Looking for a solution to simplify your daily luting procedures, and even more?

Choose G-CEM ONE, a dual cure universal self-adhesive resin cement with high adhesive bond strength for daily procedures, which can also be used in challenging and non-retentive situations when applying the optional tooth primer or adhesive.

### Key clinical advantages

- **Reliable:** efficient chemical polymerization even under opaque or thick restorations
- **Flexible:** increased tooth adhesion thanks to the Touch Cure technology of the Adhesive Enhancing Primer (AEP) or the use of the universal bonding agent G-Premio BOND
- **Aesthetic:** excellent wear resistance for long lasting invisible margins

### Practical advantages

- **Universal:** reliable performance for any type of restoration, including non retentive ones (when using the Adhesive Enhancing Primer or G-Premio BOND)
- **Technique insensitive:** moisture tolerance, ideal viscosity, easy excess removal
- **Simple:** standardized protocol with very easy handling
- **Economic consideration:** €€€€€

### Shade range

- A2, Translucent, AO3, White Opaque

### Clinical applications

	Metal / PFM	Feldspathic / leucite ceramics* (e.g. GC Initial LRF)	Lithium Disilicate (e.g. GC Initial LiSi Press & LiSi Block)	Zirconia / Alumina	Composite / Fibre-reinforced resin	Hybrid ceramics (e.g. CERASMART270)
Inlays / onlays	●	●	●	●	●	●
Crowns / bridges	●	●	●	●	●	●
Veneers	N.A.	●	●	●	●	●
Posts/ inlay-cores	●	N.A.	N.A.	●	●	N.A.

"Excesses of G-CEM ONE are super easy to remove and the system is easy to use. We also like the flexibility to decide whether you need the primer or not and the assurance that everything sets well even in the self-cure mode. It's a great product!"

DR MELIKE AND DR DAVID BERGFORT, GERMANY

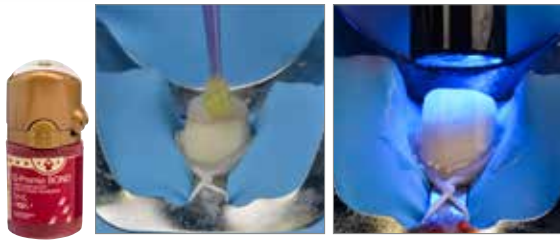
\* Feldspathic & leucite-reinforced ceramics

# G-CEM LinkForce

Dual-cure adhesive resin cement

**Strength and aesthetics in one system for all indications, all substrates.**

G-CEM LinkForce is the universal adhesive resin cement that is ideal to use whenever additional retention is needed and a must-have for all CAD/CAM ceramic and hybrid ceramic blocks such as CERASMART270.



Easy application of G-Premio BOND with or without prior etching (3µm) for optimal adhesion  
Light-curing of the thin bonding BOND (3µm) for optimal adhesion



One universal primer for stable adhesion to all substrates thanks to a very low film thickness  
Easy seating and perfect adaptation

Source: Dr Antonio Saiz-Pardo, Spain

## Key clinical advantages

- Secure adhesion in all situations with only one system, three base elements:
  - G-Premio BOND bonds to ALL Preparations with no compromises
  - G-Multi Primer ensures a stable adhesion to ALL Restorations
  - G-CEM LinkForce provides a strong link in ALL Indications
- Optimal light-curing feature for veneer indications
- Efficient self-cure mode, useful for luting more opaque or thick restorations

## Practical advantages

- Optional use of G-Premio BOND Dual-Cure Activator for post luting
- The universal, aesthetic and powerful solution to all your adhesive cementation challenges
- Choice of four aesthetic shades and their corresponding try-in pastes
- Economic consideration: €€€€€€

## Shade range

- A2, Translucent, Bleach, Opaque

## Clinical applications

	Metal / PFM	Feldspathic / leucite ceramics* (e.g. GC Initial LRF)	Lithium Disilicate (e.g. GC Initial LiSi Press & LiSi Block)	Zirconia / Alumina	Composite / Fibre-reinforced resin	Hybrid ceramics (e.g. CERASMART270)
Inlays / onlays	●	●	●	●	●	●
Crowns / bridges	●	●	●	●	●	●
Veneers	N.A.	●	●	●	●	●
Posts/ inlay-cores	●	N.A.	N.A.	●	●	N.A.

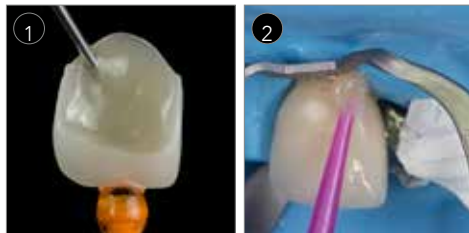
**"I use G-CEM LinkForce as a first choice in all clinical indications. Day after day it still surprises me."**

DR CASTI, ITALY

\* Feldspathic & leucite-reinforced ceramics

# G-CEM Veneer

Light-cure adhesive resin cement



Easy dispensing

Thixotropic consistency: easy removal of excess



Light-curing composite: high aesthetics over time

A versatile resin cement for easy luting of restorations with 2mm thick.

G-CEM Veneer: a light-cure resin cement for high aesthetic demand with easy placement featuring Full-coverage Silane Coating (FSC) technology.

## Key clinical advantages

- Thixotropic consistency for easy placement of veneers and easy excess removal.
- Superior performance thanks to **high filler rate** of 69% (w/w): high wear resistance, high bond and flexural strength for long-term aesthetics.
- The alternative to heated composites with less risk of failures for thin indirect restorations.

## Practical advantages

- Easy to use and universal system with G-Premio BOND and G-Multi PRIMER.
- 4 aesthetic shades matching all cases, with G-CEM Try-in pastes.
- Ergonomic syringe.
- Economic consideration: €€€€€

## Shade range

- A2, Translucent, Bleach, Opaque

## Clinical applications

	Glass-ceramics* (e.g. GC Initial LRF, GC Initial LiSi Press & LiSi Block)	Hybrid ceramics (e.g. CERASMART270)	Composite (e.g. GRADIA PLUS)
Veneers	●	●	●
Inlays / onlays	● (< 2.0 mm thickness)	● (< 2.0 mm thickness)	● (< 2.0 mm thickness)

“To me, G-CEM Veneer kit seems to be particularly suited for the modern luting challenges linked to minimally invasive ceramic restorations. It demonstrates a good flowability, while keeping a high viscosity in order to maintain good marginal sealing ability before polymerisation.”

PROF JEAN-FRANCOIS LASSERRE, FRANCE

\* Feldspathic, leucite-reinforced ceramics and lithium disilicate

# GC's temporary cements...

## FREEGENOL TEMPORARY PACK

Zinc oxide cement



### Key features

- All-purpose temporary solution
- Adjustable consistency and setting times
- Easy removal of excess
- Eugenol free, avoid interaction with resin cements

## GC Fuji TEMP LT

Conventional glass ionomer cement in Paste-pak cartridge



### Key features

- Assured retention and easy removal
- Easy seating thanks to low film thickness (6µm)
- Rubbery consistency for easy removal of excess
- Radiopaque
- Ideal for cementation on implant abutments

# Also discover GC's Primers...

Whether you prefer a specialised or a universal primer, GC has a solution.

## Universal solution G-Multi PRIMER

One universal primer for ALL your indirect restorations.



## Specialised solutions CERAMIC PRIMER II

A specialised primer for all aesthetic indirect restorations. Compatible with glass-ceramic, hybrid ceramic, zirconia, alumina and composite restorations.



## METAL PRIMER Z

The hero for all your metal and porcelain fused to metal restorations.



GC Luting navigation chart.  
Find the right cement(s) to master  
your luting challenges!

		Glass Ionomers			Resins			
		Self-cure			Dual Cure		Light-Cure	
		Conventional	Resin Modified		Self-adhesive	Universal	Adhesive	
		GC Fuji I	GC Fuji PLUS	GC FujiCEM Evolve FujiCEM 2	G-CEM ONE G-CEM Capsule	G-CEM ONE + AEP or G-Premio BOND	G-CEM Link Force	G-CEM Veneer
Crowns & bridges	Metal	●		●				
	Zirconia		●	●	●	●	●	—
	Lithium disilicate (e.g. GC Initial LiSi Press & LiSi Block)		●	●	●	●	●	—
	Composite (e.g. GC GRADIA PLUS)							—
	Feldspathic & Leucite reinforced ceramics (e.g. Initial LRF)	—						—
	Hybrid ceramics (e.g. CERASMART270)		—	—	—			
Inlays & onlays	Metal	●		●				—
	Zirconia		●	●	●	●	●	—
	Lithium disilicate (e.g. GC Initial LiSi Press & LiSi Block)		●	●	●	●	●	●*1
	Composite (e.g. GC GRADIA PLUS)	—						●*1
	Feldspathic & Leucite reinforced ceramics (e.g. Initial LRF)		inlays	inlays				●*1
	Hybrid ceramics (e.g. CERASMART270)		—	—	—			
Veneers	Lithium Disilicate (e.g. GC Initial LiSi Press & LiSi Block)							●*1
	Composite	—	—	—	—	●	●	●*1
	Feldspathic & Leucite reinforced ceramics (e.g. Initial LRF)	—	—	—	—	●	●	●*1
	Hybrid Ceramics (e.g. CERASMART270)							
Posts & inlay cores	Metal	●		●				—
	Zirconia	—	●	●	●	●	●	—
	Fibre reinforced	—						

Discover more features about GC luting cements

	Conventional glass ionomer		Resin-modified glass ionomer				Self-adhesive resin		Adhesive resin	
	GC Fuji I	GC Fuji I	GC Fuji PLUS	GC Fuji PLUS <sup>EWT*2</sup>	GC Fuji PLUS	GC FujiCEM 2 GC FujiCEM Evolve	G-CEM Capsule	G-CEM ONE	G-CEM LinkForce	G-CEM Veneer
Shades	Light yellow	Light yellow	Yellow, Translucent & A3	A3	Yellow & A3	Light yellow	A2, Translucent, AO3 & BO1	A2, Translucent, AO3 & White Opaque	A2, Translucent, Opaque & Bleach	A2, Translucent, Opaque & Bleach
Mixing time	20 sec	10 sec	20 sec	20 sec	10 sec	20 sec **	10 sec	N.A.	N.A.	N.A.
Working time	2 min	2 min 15	2 min 30	3 min 30	2 min	2 min 15	2 min 30	2 min 40 2 min 10 (with AEP)	3 min	N.A.
Final finishing time (commencing time)	4 min 30	4 min 30	4 min 30	5 min 45	4 min 15	4 min 30	4 min	4 min	4 min	N.A.

Notes: \*1 For indirect restorations with thin thickness (≤ 2mm) that enable the use of a purely light-curing technique. \*2: EWT: Extended Working Time: perfect for the cementation of bridges.

\*\* if handmix

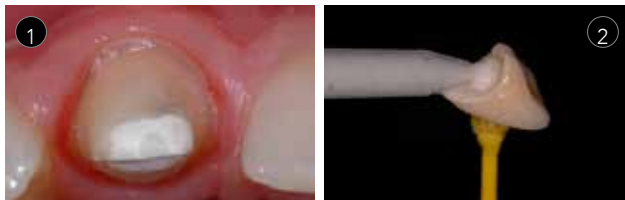


# Let's Join Forces! Discover our key luting solutions for all your luting challenges

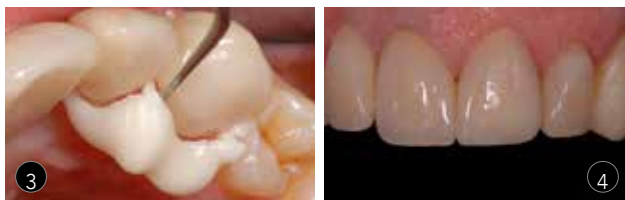
## GC FujiCEM 2, GC FujiCEM Evolve & GC Fuji PLUS

Resin-modified glass ionomer cement

Proven to be a benchmark in their class. They also are ideal worry-free solutions for your routine procedures, especially for metal, porcelain fused to metal & zirconia. They are your 'must-haves', especially when moisture control becomes a challenge!



- 1 | Perfect solution for subgingival margins!
- 2 | Easy dispensing
- 3 | Easy removal of excess
- 4 | Full protection for the tooth

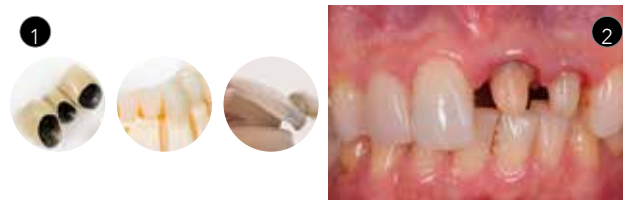


Source: Prof Jean-François Lasserre (1), Dr Frédéric Raux (2 and 4) & Dr Emmanuel d'Incau (3), France

## G-CEM ONE

Universal self-adhesive resin cement

Simple solution for all luting indications with predictable results. Even non-retentive indications can be covered thanks to the optional tooth primer with Touch Cure technology or universal adhesive G-Premio BOND. The excellent self-curing ability provides perfect results even with thick or opaque restorations.



- 1 | can be used for retentive preparation alone and for non retentive preparations in combination with G-CEM ONE AEP or G-Premio BOND
- 2 | Technique insensitive & moisture tolerant
- 3 | Easy handling and excess removal
- 4 | Aesthetic results in time



Source: Dr Kazunori Otani, Japan

## G-CEM LinkForce & G-CEM Veneer Adhesive resin cement

When uncompromised adhesion is needed, this product is THE solution. This universal adhesive resin cement allows you to work in a standardised way and offers a strong bond in all indications.







- 1 | Easy application of G-Premio BOND
- 2 | Light-curing of the thin bonding layer for optimal adhesion
- 3 | Universal Primer for stable adhesion to all substrates
- 4 | Easy seating and perfect adaption





Source: Dr Antonio Saiz-Pardo, Spain



GC Fuji I	
	1000032 Intro Package: 1x Powder Light Yellow (35 g) & 1x Liquid (20 mL)
	1000030 Refill Powder Light Yellow (35 g)
	1000031 Refill Liquid (20 mL)
	1000091 Refill Capsules Light Yellow (x 50)

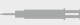
GC Fuji PLUS	
	10000157 Intro Package: Full Set A3 (15 g Powder A3, 7 mL Liquid & 6.5 mL Conditioner)
	10000088 Refill-EWT (extended working time version) Powder A3 (15 g)
	10000084 Refill Powder Yellow (15 g)
	10000158 Refill Powder Translucent (15 g)
	10000159 Refill Powder A3 (15 g)
	10000085 Refill Liquid (7 mL)
	10000087 Refill Capsules Yellow (x50)
	10000161 Refill Capsules A3 (x50)

GC FujiCEM 2	
	10003460 Automix Package: 2x Paste Pak cartridges (13.3 g) & 44x mixing tips
	10003459 Refill 2x Paste Pak cartridge (13.3 g / 7.2 mL)
	10003464 Refill Mixing Tips SL (x20)
	10003465 Refill Mixing Tips SL for Endo (x10)
	70000002 GC Paste Pak Dispenser



GC FujiCEM Evolve	
	10004926 Single Pack: 1x syringe (9.2 g / 5.0 mL), 15x GC Push and Click Tip Regular
	10004916 Triple Pack Handmix: 3x syringe (9.2 g / 5.0 mL), 1x Mixing Pad #22
	10004928 Triple Pack Automix: 3x syringe (9.2 g / 5.0 mL), 45x GC Push and Click Tip Regular
	10004917 Push and Click Tip Regular
	10004929 Push and Click Tip Endo


G-CEM	
	10000420 50 Capsules Assorted: 20x A2, 20x Translucent, 5x A03, 5x BO1
	10000416 Refill Capsules A2 (x50)
	10000417 Refill Capsules AO3 (x50)
	10000418 Refill Capsules Translucent (x50)
	10000419 Refill Capsules BO1 (x50)
	10000891 GC Capsule Elongation tip, 50 pcs

G-CEM ONE	
	10006920 System Kit: 1x syringe A2 (4.6 g / 2.7 mL), 1x syringe TR (4.6 g / 2.7 mL) 1x Adhesive Enhancing Primer (4 mL), 1x G-Multi PRIMER (5 mL), accessories
	10006918 Starter Kit A2: 1x syringe (4.6 g), 1x Adhesive Enhancing Primer (2 mL), accessories
	10006919 Starter Kit Translucent: 1x syringe (4.6 g), 1x Adhesive Enhancing Primer (2 mL), accessories
	100037114 Universal Starter Kit A2: 1x G-CEM ONE Syr.(4,6g), 8x GC Automix Tips Regular, 2x GC Automix Endo tips, 1x G-Premio BOND 5mL
	100037115 Universal Starter Kit Translucent: 1x G-CEM ONE Syr.(4,6g), 8x GC Automix Tips Regular, 2x GC Automix Endo tips, 1x G-Premio BOND 5mL
	100037116 Universal System Kit: 1x G-CEM ONE Syr. A2 (4,6g), 1x G-CEM ONE Syr. TR (4,6g), 15x GC Automix Tips Regular, 5x GC Automix endo tips, 1x G-Premio BOND 5mL, 1x G-Multi PRIMER 5mL
	10006921 Twin Refill A2, 2x syringes (4.6 g / 2.7 mL)
	10006922 Twin Refill Translucent, 2x syringes (4.6 g / 2.7 mL)
	10006923 Single Refill AO3, 1x syringe (4.6 g / 2.7 mL)
	10006924 Single Refill White Opaque, 1x syringe (4.6 g / 2.7 mL)
	10006925 Value Refill A2, 8x syringe (4.6 g / 2.7 mL)
	10006926 Value Refill Translucent, 8x syringe (4.6 g / 2.7 mL)
	10006833 G-CEM ONE Adhesive Enhancing Primer (4 mL) bottle refill

G-CEM LinkForce	
	10001338 System Kit: 1x syringe A2 (8.7 g / 5 mL), 1x syringe Translucent (8.7 g / 5 mL), G-Premio BOND (5 mL), G-Premio BOND DCA (3 mL), G-Multi PRIMER (5 mL), G-CEM Try-in Pastes (A2 & Translucent) (1.2 mL / 1.5 g), GC Etchant & accessories
	10001339 Starter Kit A2: 1x syringe A2 (8.7 g / 5 mL), G-Premio BOND (5 mL), G-Multi PRIMER (5 mL) & accessories
	10001340 Starter Kit Translucent (TR): 1x syringe Translucent (8.7 g / 5 mL), G-Premio BOND (5 mL), G-Multi PRIMER (5 mL) & accessories
	10001341 Refill A2 - 1x (8.7 g / 5 mL)
	10001342 Refill Translucent TR - 1x (8.7 g / 5 mL)
	10001343 Refill Opaque - 1x (8.7 g / 5 mL)
	10001344 Refill Bleach - 1x (8.7 g / 5 mL)
	10001484 GC G-CEM Try-in paste, syringe 1.5g/1.2ml A2
	10001485 GC G-CEM Try-in paste, syringe 1.5g/1.2ml Translucent
	10001486 GC G-CEM Try-in paste, syringe 1.5g/1.2ml Opaque
	10001487 GC G-CEM Try-in paste, syringe 1.5g/1.2ml Bleach
	10001461 G-Premio BOND (5 mL) bottle refill
	10001349 G-Premio BOND DCA (3 mL)
	10003289 GC Automix Tip for Endo (x10)
	10003335 GC Automix Tip Regular (x10)

G-CEM Veneer	
	10001382 Kit: 1x syringe A2 (1.7 g / 1 mL), 1x syringe TR (1.7 g / 1 mL), 1x G-CEM Try-in Paste Refill A2 (1.5 g / 2 mL), 1x G-CEM Try-in Paste Refill A2 (1.5 g / 2 mL), G-Premio BOND (5 mL), G-Multi PRIMER (5 mL), accessories
	10001383 Refill A2 (1.7 g / 1 mL)
	10001386 Refill Translucent (1.7 g / 1 mL)
	10001385 Refill Opaque (1.7 g / 1 mL)
	10001384 Refill Bleach (1.7 g / 1 mL)
	10001484 GC G-CEM Try-In Paste A2 (1.5 g / 1.2 mL)
	10001487 GC G-CEM Try-In Paste Translucent (1.5 g / 1.2 mL)
	10001486 GC G-CEM Try-In Paste Opaque (1.5 g / 1.2 mL)
	10001485 GC G-CEM Try-In Paste Bleach (1.5 g / 1.2 mL)
	10001461 G-Premio BOND (5 mL) bottle refill

Temporary Cements	
	10000009 FREEGENOL TEMPORARY PACK 1-1 Pack tubes (55 g Base, 20 g Accelerator, 2.5 mL Cleaner)
	10000856 GC Fuji TEMP LT 2x (13.3 g / 7.2 mL) Paste Pak cartridges 2x (13.3 g / 7.2 mL)

Primers Primers	
	10001350 G-Multi PRIMER (5 mL) Liquid
	10001202 GC CERAMIC PRIMER II (3 mL) Liquid
	10001204 GC CERAMIC PRIMER II Unit dose pack (10 pcs)
	10001265 GC METAL PRIMER Z (5 mL) Liquid

**GC EUROPE N.V. | Head Office**  
 Researchpark  
 Haasrode-Leuven 1240  
 Interleuvenlaan 33  
 B-3001 Leuven  
 Tel. +32.16.74.10.00  
 Fax. +32.16.40.48.32  
 info.gce@gc.dental  
<https://www.gc.dental/europe/en>

**GC UNITED KINGDOM Ltd.**  
 Coopers Court Newport Pagnell  
 Buckinghamshire MK16 8JS  
 United Kingdom  
 Tel. +44.1908.218.999  
 Fax. +44.1908.218.900  
 info.uk@gc.dental  
<https://www.gc.dental/europe/en-GB>