



Laying the  
groundwork  
for your  
aesthetics

Dedicated primers  
from **GC**  
for dental laboratory use

**GC**

# Durable bonding to ceramics and composites



**CERAMIC PRIMER II** is a specialised priming agent for all aesthetic indirect restorations.

For the additional application or repair of **GRADIA PLUS** or when individualizing GRADIA PLUS with GRADIA PLUS Lustre Paint use CERAMIC PRIMER II to ensure a good adhesion.



Apply CERAMIC PRIMER II before characterising your **CERASMART270** restorations with **OPTIGLAZE color**. For more in-depth effects, a cut-back technique can also be used in combination with GRADIA PLUS.



CERAMIC PRIMER II is your preferred partner to guarantee a strong interface.  
All-ceramics can be characterised with GRADIA PLUS, including zirconia frameworks.

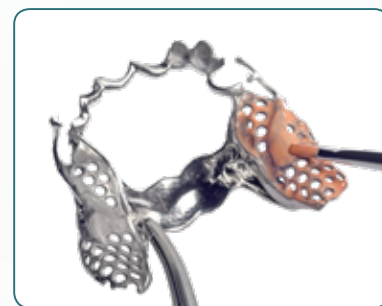
# The hero for all your metal-based frameworks



**METAL PRIMER Z** is a one-step resin-to-metal bonding agent.

For a strong connection between the metal framework and any type of resin-based material such as acrylics and methacrylate composites. An easy-to-use and proven bonding agent!

Before covering your metal framework with GRADIA PLUS Opaque, METAL PRIMER Z is used to create a chemical connection.



Besides its specific indication for priming metal-based frameworks, METAL PRIMER Z can alternatively also be used to bond to zirconia frameworks.

# The base for modifying dentures



**GC Acrylic Primer** increases the adhesion between light-curing composites and conventional acrylic resins used in dental laboratory procedures like the modification of denture teeth or denture base resins.





# All-in-one solution for luting and repair



**G-Multi PRIMER** is used for the pretreatment of restorations before luting with G-CEM LinkForce or G-CEM Veneer and can also be used for intraoral repairs. It contains three different chemical agents to ensure a perfect adhesion to all types of restorations.



008551	CERAMIC PRIMER II, 3mL
009295	METAL PRIMER Z, 5mL
901138	GC Acrylic Primer, 6mL
009553	G-Multi PRIMER, 5 mL

CERAMIC PRIMER II, CERASMART270, GC Acrylic Primer, G-CEM LinkForce, G-CEM Veneer, GRADIA PLUS, METAL PRIMER Z and OPTIGLAZE color are trademarks of GC.

**GC EUROPE N.V.**  
Head Office  
Researchpark  
Haasrode-Leuven 1240  
Interleuvenlaan 33  
B-3001 Leuven  
Tel. +32.16.74.10.00  
Fax. +32.16.40.48.32  
info.gce@gc.dental  
<http://www.gceurope.com>

**GC Nordic Danish Branch**  
Scandinavian Trade Building  
Gydevang 39-41  
DK-3450 Allerød  
Tel: +45 51 15 03 82  
info.denmark@gc.dental  
<http://denmark.gceurope.com>

# GC