

## STEP-BY-STEP CLINICAL APPLICATION

Example GC UNIFAST *TRAD*



Patient with metal-ceramic crown on tooth 12 to be replaced



Impression-taking before preparation



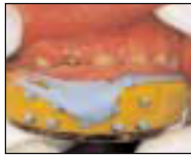
Finished preparation



Mix GC UNIFAST *TRAD* for 10-15 seconds



Fill impression with mixed GC UNIFAST *TRAD*



Place in the mouth



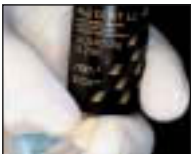
Remove 2'30" after start of mixing  
The material reaches a temperature of  $\pm 40^{\circ}\text{C}$



Temporary crown before finishing



Finishing the temporary crown 4 minutes after start of mixing



A shiny surface is achieved by application of GC Fuji COAT LC



Secure the temporary crown made of GC UNIFAST *TRAD* using GC Freegenol



End result

## GC PRODUCTS FOR TEMPORARY RESTORATIONS AT A GLANCE

### GC Provitec

Temporary Crown & Bridge material on Bis-acrylic composite basis



### GC FREEGENOL

Eugenol free temporary crown & bridge luting cement



### GC K.Y. PLIER

Plier for removal of temporary prosthetic appliances



## PACKAGING

### GC UNIFAST *TRAD*



#### • REFILLS

100 g powder, ivory, N.3X, N.8  
250 g powder, ivory, N.3X, N.8  
1 kg powder, ivory, N.3X, N.8  
100 g liquid  
250 g liquid

### GC UNIFAST *LC*



#### • INTRODUCTORY PACKAGE

Powder A2, A3, B2, B3, C2, translucent, each 30 g  
Liquid 2 x 60 g

#### • REFILLS

50 g powder A2, A3, B2, B3, C2, translucent  
2 x 15 g liquid

z 0 LF GB 6 35 - 04/99

**GC EUROPE N.V.**  
Head Office  
Interleuvenlaan 13  
B - 3001 Leuven  
Tel. +32.16.39.80.50  
Fax. +32.16.40.02.14  
E-mail info@gceurope.com  
http://www.gceurope.com

**GC UNITED KINGDOM Ltd.**  
22, Coopers Court  
Newport Pagnell  
UK - Bucks. MK16 8JS  
Tel. +44.1908.218.999  
Fax. +44.1908.218.900  
E-mail info@uk.gceurope.com  
http://uk.gceurope.com

© Vita is a registered trademark of Vita Zahnfabrik, Bad Säckingen, Germany.

**'GC'**  
FIRST IN QUALITY

## GC UNIFAST

TEMPORARY CROWN & BRIDGE MATERIAL BASED ON METHYL METHACRYLATE

## GC UNIFAST in the spotlights

- **HIGHLY ECONOMICAL**
- **INTELLIGENT SETTING BEHAVIOUR WITH MEMORY EFFECT**
- **FAST OR CONTROLLABLE (VLC) WORKING TIME**

# GC UNIFAST

## FROM PROBLEM TO SOLUTION

Temporary treatment of prepared teeth and gaps is an essential part of successful, well fitting prosthetic work, and must take account of functional, periodontal and aesthetic aspects.

Practice shows that a single dental material cannot meet all these diverse requirements.

These considerations led GC to develop **GC UNIFAST TRAD** and the light-cured equivalent **GC UNIFAST LC** both matched precisely to the requirements of users.

Short-term, temporary restoration, the most common indication, imposes very specific requirements on the material, such as

- speed of treatment,
- problem-free removal during the setting phase
- and economical procedure.

**GC UNIFAST<sup>1</sup>**, based on methyl methacrylate resin, fulfils these requirements superbly. The advantages of this class of material perfectly satisfy the particular demands associated with the short-term provision of temporary

- inlays or onlays,
- single crowns
- and short-span bridges

<sup>1</sup> The following information applies equally to the products **GC UNIFAST TRAD** and **GC UNIFAST LC**

## PRODUCT CHARACTERISTICS

Methyl methacrylate is a key factor in the suitability of **GC UNIFAST** for use in practice.

The good wettability of powder and liquid makes it easy to produce a homogeneous, bubble-free mix.

**GC UNIFAST's** typical rubbery elasticity allows problem-free removal of the temporary restoration, even from preparations with slight undercuts or in poorly accessible preparation sites.

Another advantage is the recovery of **GC UNIFAST**, known as its "memory effect". This effectively prevents any lasting deformation during removal, which is a problem known with other materials.

In order to meet the aesthetic requirements for a prosthetic restoration, there is a choice of several shades for both versions of **GC UNIFAST**. Good colour matching and colour stability fulfil the needs for tooth-colour temporary restoration.



Aesthetic prosthetic restorations



Problem-free removal

## PRODUCT ADVANTAGES

### Highly economical

Methyl methacrylate has a good cost-benefit ratio. The hand-mixed version does not require any expensive accessories.

### GC UNIFAST TRAD - practice-oriented working time

This aspect, which is important for economical and time-saving treatment of patients, is covered perfectly by **GC UNIFAST TRAD**. Only 2'30" after mixing, the temporary restoration can be removed from the mouth.

### GC UNIFAST LC - working without time pressure

This shows the advantage of a specialist product. The light curing gives the practitioner time for adjustment and carrying out repairs. Even the most complicated indications can be handled perfectly without pressure of time.

2'30"

GC UNIFAST TRAD

Practice-orientated working time



GC UNIFAST LC

Working without time pressure