

GC Implant Aadva™



Product Catalogue

GC Tech.Europe



EN

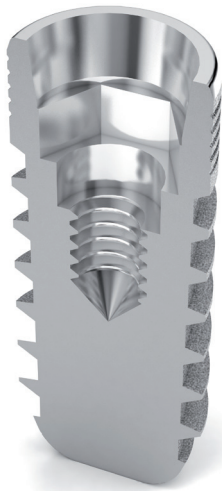
Contents

Implants	5
Standard Implants	7
Tapered Implants	7
Short Implants	7
Cover Screws	8
Healing Screws	8
Healing Screws Vario	9
Surgical Tools	11
Depth Gauge	13
Implant Drivers	13
Surgical Kit	14 - 15
Drills	16 - 18
Direction and Depth Indicator S	18
Prosthetic Kit	19
Screw Drivers	20
SR Abutment Drivers	20
Torque Wrench S	20
Abutment Remover	20
Impression taking	21
Implant Impression Copings	22
Implant Analog	22
Provi Abutments	22
Abutments	23
Ready Abutments	24 - 26
Smart Abutments	27 - 29
Prep Abutments	29
SR Abutments	30 - 33
SR Abutments single-unit	34 - 35
UCLA Abutments	36
Ball Abutments	36 - 37
Locator™ Abutments	37 - 38
Digital CAD/CAM solutions	39
Aadva Scan Body	40
Aadva Printed Model Analog	41
Tools	41
CAD/CAM Tools	42
Universal Hybrid Abutment	42
Ti-Base Abutments	43 - 44
Preferred Milling Partners	45

Innovative implant technology

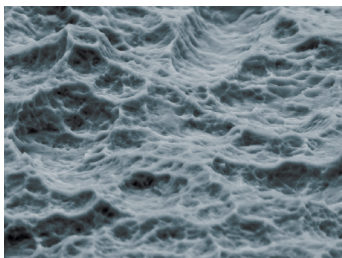
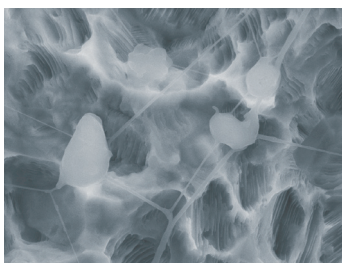
The GC Aadva Implant system is based on a pioneering implant-prosthetic synergy and CAD/CAM dentistry concept. The expertly crafted GC Aadva Implant range offers a complete solution for your implant cases. All components of the system are state-of-the-art and incorporate GC's commitment to quality and decades of research and expertise in dental material production and development. The 21st century is the period of health and GC is dedicated to contribute towards improved oral health for all people.

The GC Aadva implant system integrates the latest acquired scientific-based evidence



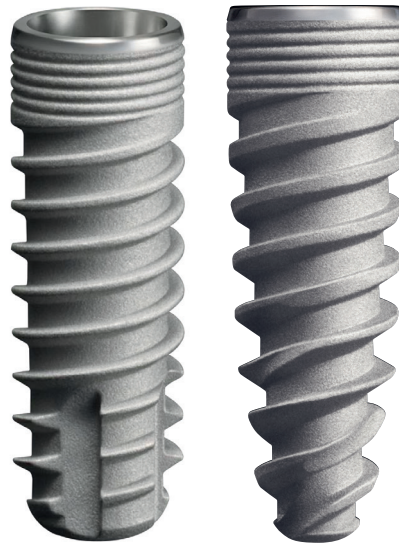
Hexagonal interlocking of the conical sealed connection.

- Simplifies the fitting and positioning of prosthetic parts.



Surface roughness technology for enhanced osseointegration.

- Homogeneously micro-structured topography using GC's technological expertise (Anchor® Surface Technology)
- Grade 5 titanium alloy selected for its high quality.



'Standard' Implant

'Tapered' Implant

Progressive threads on the implant body

- Optimises primary stability by respecting the bone physiology.



'Short' Implant

Implant Features

- Diameter reduced, platform switching.
- Optimised thread- and implant geometry for maximal bone to implant contact.
- Rounded apex for more security in treatment.
- Machined neck for periimplantitis prophylaxis.
- Balanced conicity of implant body for secure primary stability while protecting the bone.
- Self tapping thread for smooth and minimal invasive insertion.

Cumulative effect of shifting and switching platform.

- Active preservation of hard and soft tissue to obtain and maintain aesthetic and functional integration.

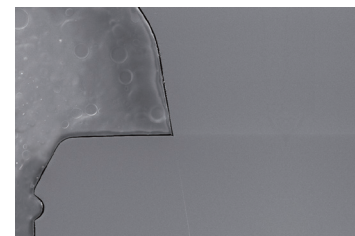
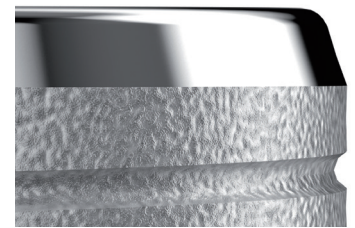


External angulated geometry implant collar.

- Promotes the stabilization of the biological width by initiation of an attachment area for epithelial connective tissue.
- Reduces the risk of peri-implantitis

Coronal micro threads.

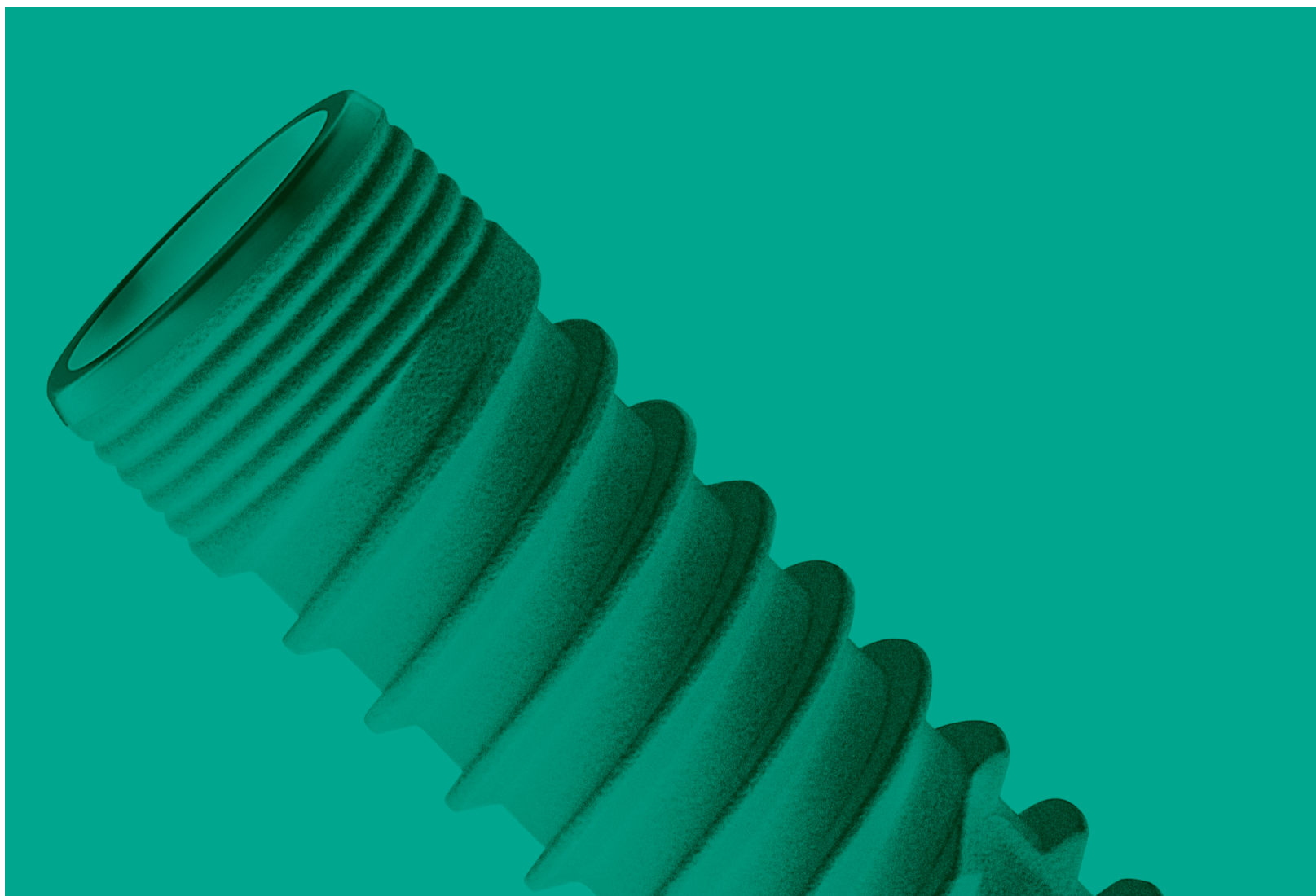
- Promotes rigidity of the implant collar and distributes the peripheral bone stress.



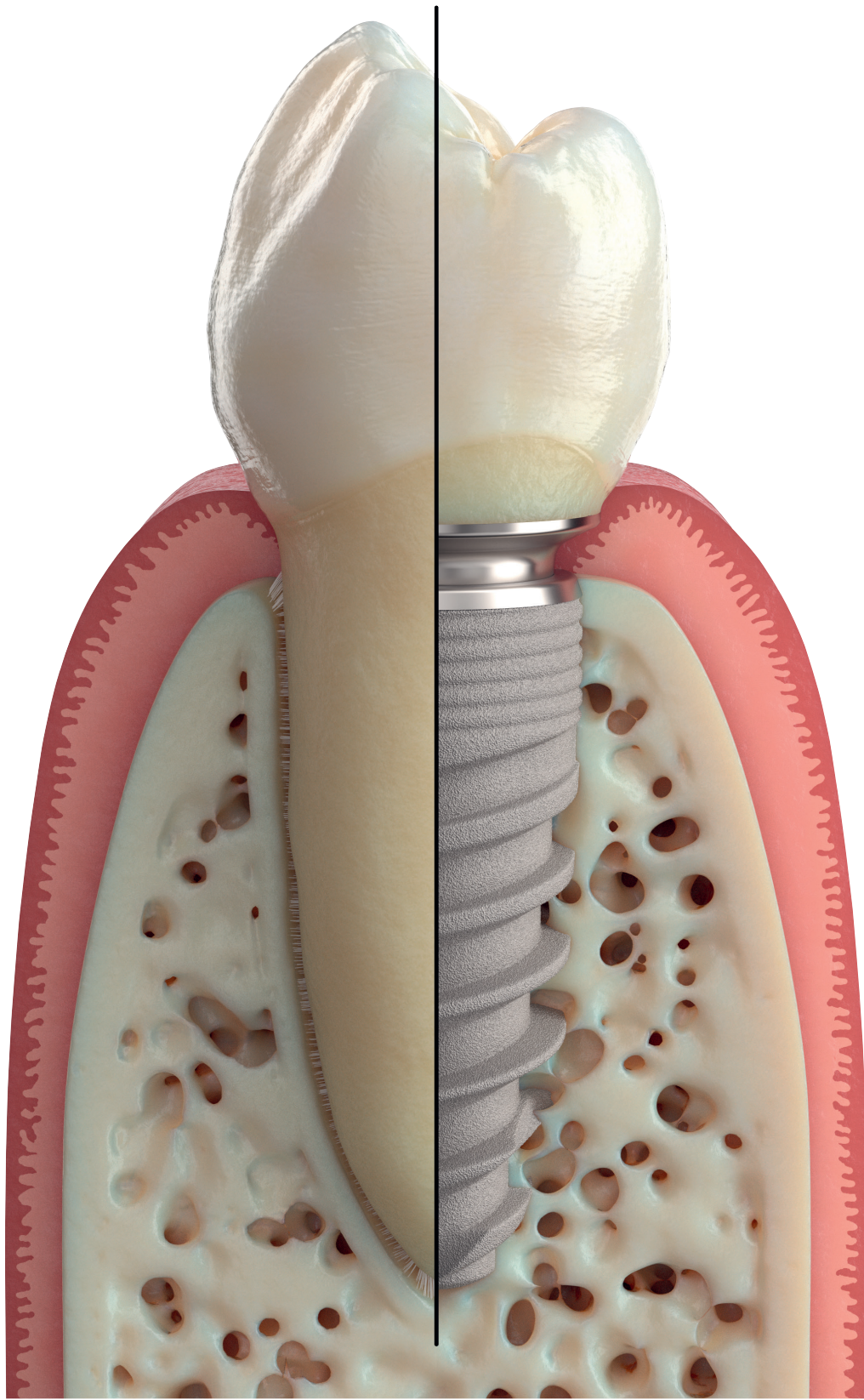
Conical seal design.

- Prevents bacterial infiltration and maintains the biological width.
- Promotes hermeticity of the joint.
- Enhances a homogeneous distribution of mechanical stresses.
- Guarantees a stable prosthetic connection.



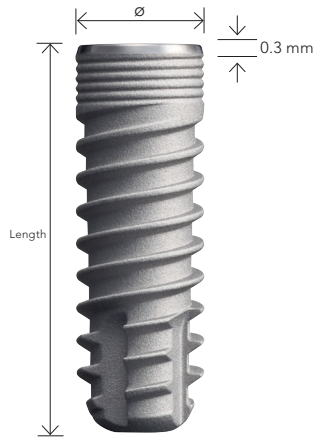


Implants



Standard Implants

Material: Titanium Alloy, Sterile



Standard Implant Narrow Ø3.3

810237	Standard Implant Narrow	8 mm
810238	Standard Implant Narrow	10 mm
810239	Standard Implant Narrow	12 mm
810240	Standard Implant Narrow	14 mm

Standard Implant Regular Ø4.0

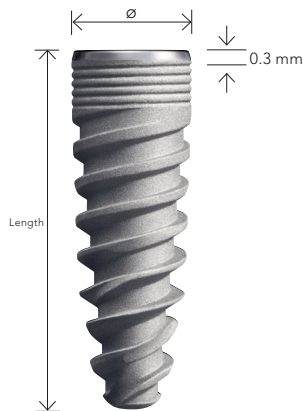
810241	Standard Implant Regular	8 mm
810242	Standard Implant Regular	10 mm
810243	Standard Implant Regular	12 mm
810244	Standard Implant Regular	14 mm

Standard Implant Wide Ø5.0

810245	Standard Implant Wide	8 mm
810246	Standard Implant Wide	10 mm
810247	Standard Implant Wide	12 mm

Tapered Implants

Material: Titanium Alloy, Sterile



Tapered Implant Narrow Ø3.3

810248	Tapered Implant Narrow	8 mm
810249	Tapered Implant Narrow	10 mm
810250	Tapered Implant Narrow	12 mm
810251	Tapered Implant Narrow	14 mm

Tapered Implant Regular Ø4.0

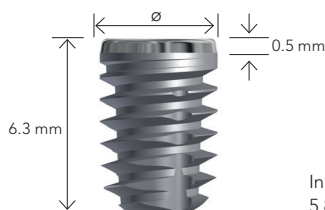
810252	Tapered Implant Regular	8 mm
810253	Tapered Implant Regular	10 mm
810254	Tapered Implant Regular	12 mm
810255	Tapered Implant Regular	14 mm

Tapered Implant Wide Ø5.0

810256	Tapered Implant Wide	8 mm
810257	Tapered Implant Wide	10 mm
810258	Tapered Implant Wide	12 mm

Short Implants

Material: Titanium Alloy, Sterile



Short Implant

810263	Short Implant Ø 4.2mm, Narrow connection, L 6.3mm
810264	Short Implant Ø 5.2mm, Regular/Wide Conn., L 6.3mm



Cover Screws

Cover Screw



Recommended Torque
5 - 10 N cm (Light Finger Force)

Narrow



810135

Regular



810136

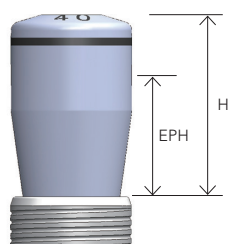
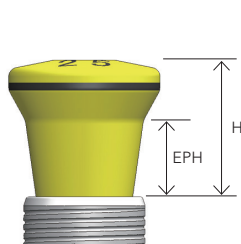
Material: Titanium Alloy, Sterile

Wide



810137

Healing Screws - Vis de Cicatrisation



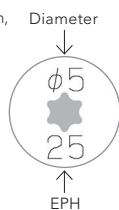
Recommended Torque
5 - 10 N cm (Light Finger Force)

Material: Titanium Alloy, Sterile

* For 810143 only.
EPH is measured as figure above - EPH se mesure comme ci-dessus

Healing Screw Narrow

Example: Diameter = Ø5.0 mm,
EPH = 2.5 mm















Blank = Ø4.0 mm
Ø5 = Ø5.0 mm
Ø6 = Ø6.0 mm

10 = 1.0 mm
25 = 2.5 mm
40 = 4.0 mm

Healing Screw Regular

Healing Screw Wide

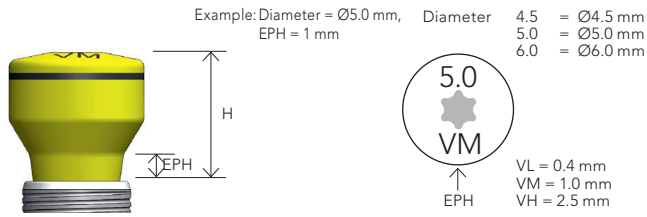
		Ø4.0		
EPH Height H	1.0	2.5	4.0	
	3.0	4.5	6.0	
				
	810138	810139	810140	
		Ø4.0		
EPH Height H	1.0	2.5	4.0	
	3.0	4.5	6.0	
				
	810141	810142	810143	
		Ø5.0		
EPH Height H	1.0	2.5	4.0	
	3.0	4.5	6.0	
				
	810144	810145	810146	
		Ø6.0		
EPH Height H	1.0	2.5	4.0	
	3.0	4.5	6.0	
				
	810147	810148	810149	

Scale: 1:1 Unit: mm

Healing Screws Vario

Material: Titanium Alloy, Sterile

Recommended Torque
5 - 10 N cm (Light Finger Force)



Healing Screw Vario Narrow

Ø4.5

Healing Screw Vario Regular

Ø5.0

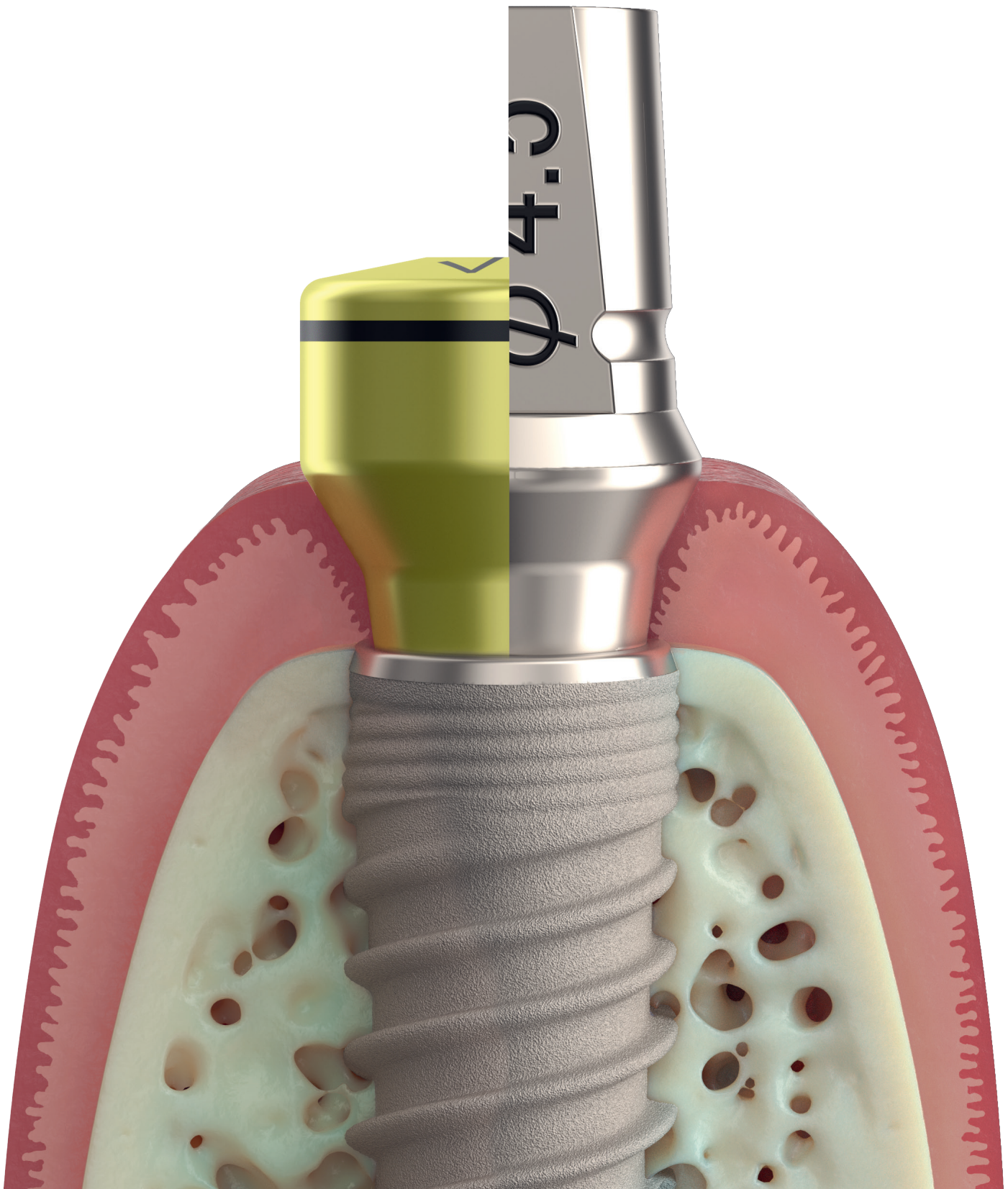
Healing Screw Vario Wide

Ø6.0

	LOW	MEDIUM	HIGH
EPH Height H	0.4 3.25	1.0 4.75	2.5 6.5
	 810295	 810296	 810297
EPH Height H	0.4 3.25	1.0 4.75	2.5 6.5
	 810298	 810299	 810300
EPH Height H	0.4 3.25	1.0 4.75	2.5 6.5
	 810301	 810302	 810303

Scale: 1:1 Unit: mm







Surgical Tools



Depth Gauge

Depth Gauge

810290



Material: Stainless Steel DLC Coated

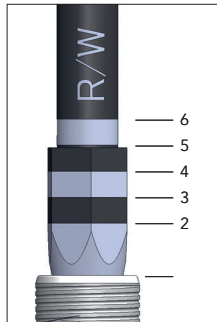
126

Implant Drivers

Implant Driver HP

Material: Stainless Steel DLC Coated

* Used with the Handpiece (Motor)
Not for use with Wrench Adaptor !

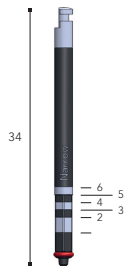


Narrow

Middle
810267

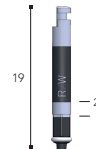


Long
810268

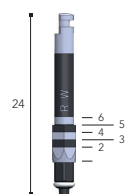


Regular/Wide

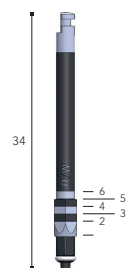
Short
810269



Middle
810270



Long
810271



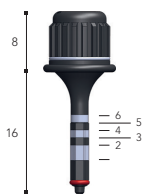
Implant Driver Wrench

* Used with the Torque Wrench

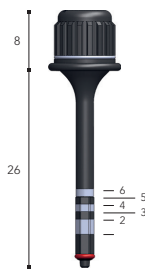


Narrow

Middle
810272

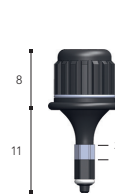


Long
810273

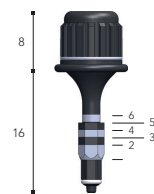


Regular/Wide

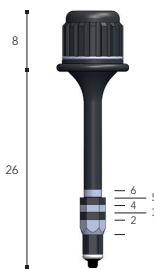
Short
810274



Middle
810275



Long
810276

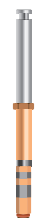


Narrow

Middle
810367



Long
810368



Regular/Wide

Middle
810370



Long
810371



Implant Driver HP S

* Used with Handpiece or Wrench Adaptor S



Scale: 1:1 Unit: mm

Surgical Kit

Aadva Surgical Kit S

810395 Aadva Surgical Kit S, including instruments

Torque Wrench S

Not included in the Kit

810389

Start Bur

Short
810073



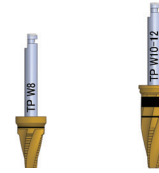
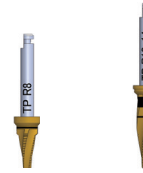
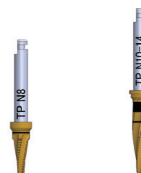
Drill Extension S

810391



Tapered Implant Drill

Narrow		Regular		Wide	
8 mm	10-14 mm	8 mm	10-14 mm	8 mm	10-12 mm
810193	810196	810194	810197	810195	810198

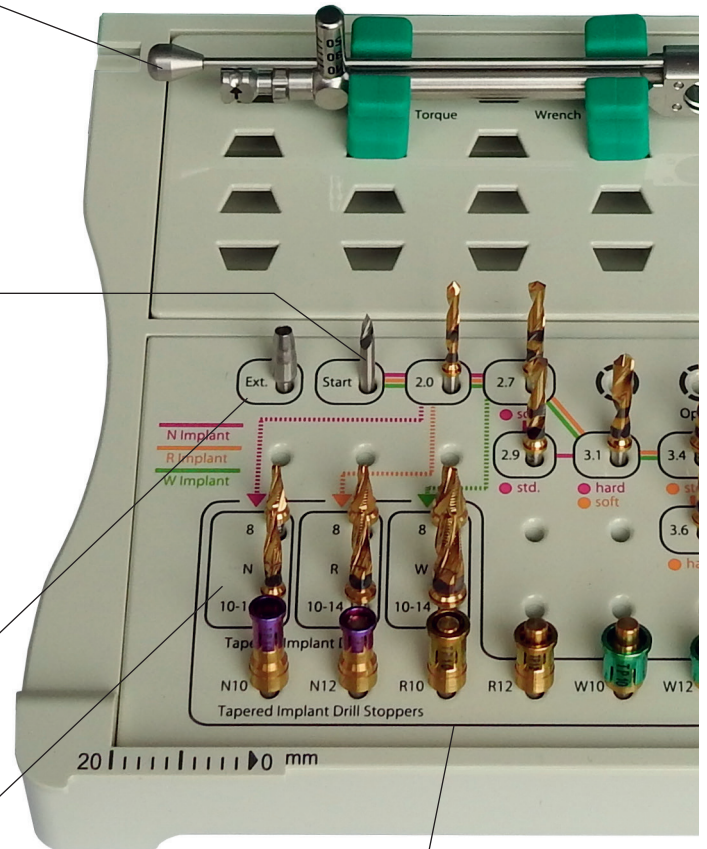


Tapered Implant drill stopper

Narrow	Regular	Wide
for: • tapered N,10 mm • tapered N,12 mm • Countersink N	• tapered R,10 mm • tapered R,12 mm • Countersink R	• tapered W,10 mm • tapered W,12 mm • Countersink W



810209 Tapered Implant Drill Stopper Set (incl. above 6 drill stoppers)



Wrench Adaptor S for HP instruments

Not included in the Kit

810460



Direction and Depth Indicator S

810388



Implant Driver HP S

Narrow

Regular/Wide

Middle 810367 Long 810368

Middle 810370 Long 810371



Screw Driver HP

Short 810277 Middle 810278 Long 810279



Twist Drill

Ø2.0 Short 810074



Ø2.7 Short 810080



Ø2.9 Short 810076



Ø3.1 Short 810082



Ø3.4 Short 810084



Ø3.6 Short 810078



Ø3.9 Short 810086



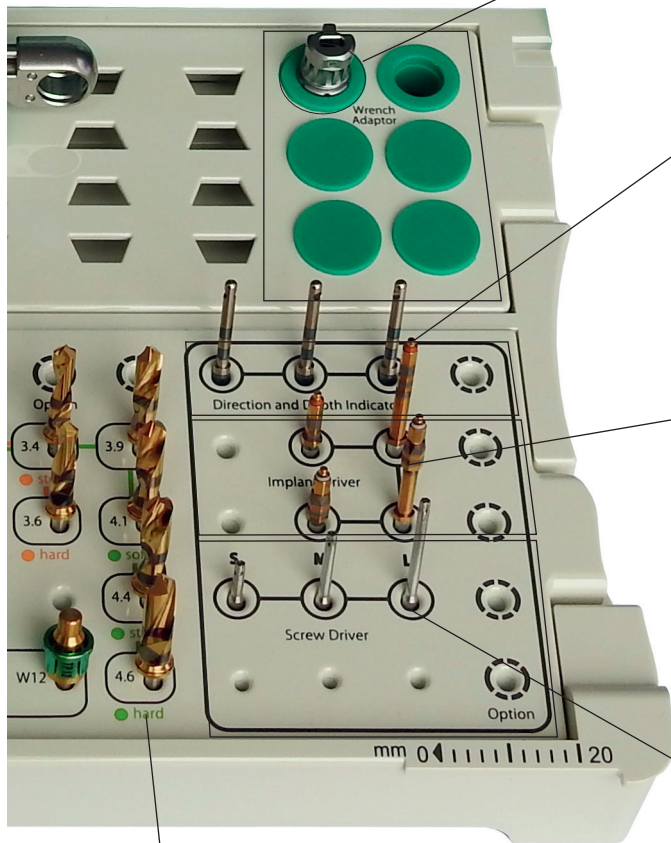
Ø4.1 Short 810088



Ø4.4 Short 810090



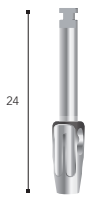
Ø4.6 Short 810092



Drills

Drill Extension S

810391

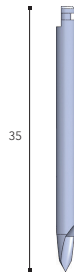


Start Burr

Short
810073



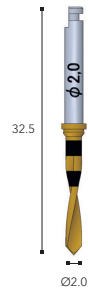
Long
810094



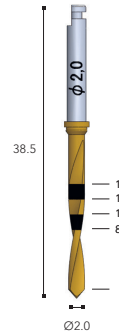
Twist Drill

Ø2.0

Short
810074

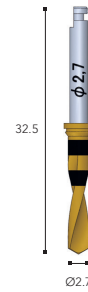


Long
810075

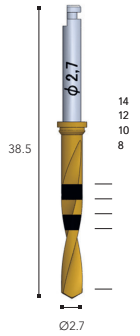


Ø2.7

Short
810080

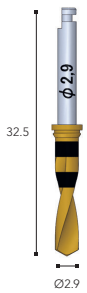


Long
810081

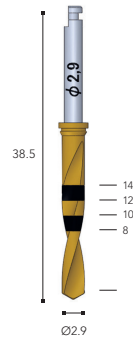


Ø2.9

Short
810076

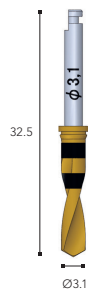


Long
810077

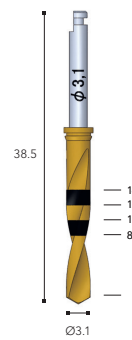


Ø3.1

Short
810082

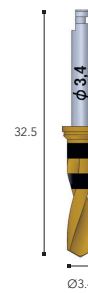


Long
810083

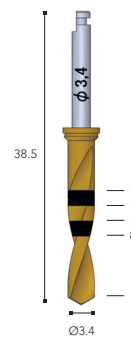


Ø3.4

Short
810084

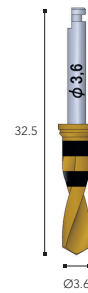


Long
810085

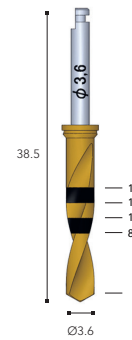


Ø3.6

Short
810078

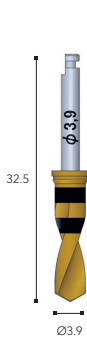


Long
810079

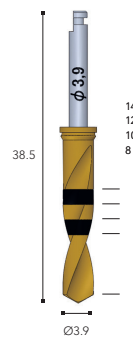


Ø3.9

Short
810086

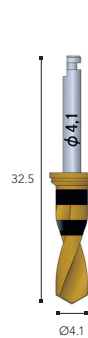


Long
810087

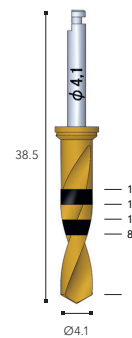


Ø4.1

Short
810088

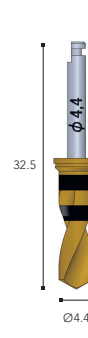


Long
810089

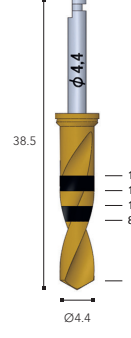


Ø4.4

Short
810090

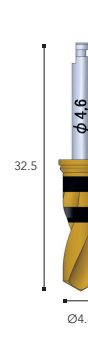


Long
810091

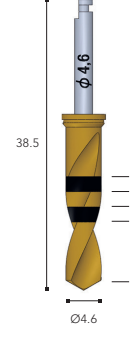


Ø4.6

Short
810092



Long
810093



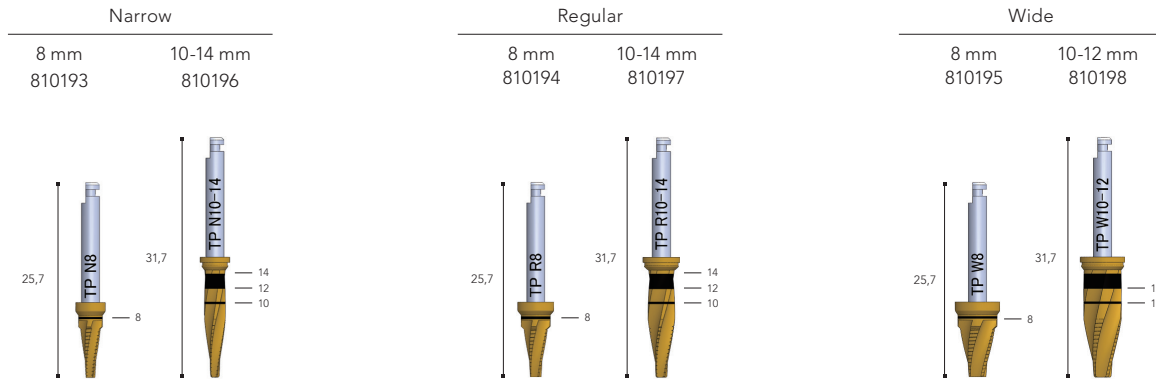
Material: Stainless Steel



Caution: The additional depth of drill preparation is up to 1 mm. Tip colored in black at base of implant represents this added length on radiographic template.

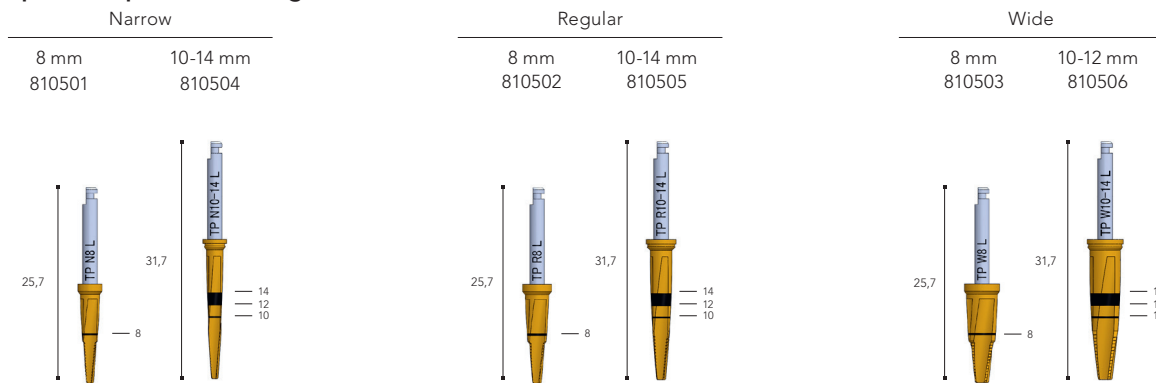
Scale: 1:1 Unit: mm

Tapered Implant Drill Short



- ⚠** 1. Use Tapered Drills and stoppers between 500-700 rpm. Stoppers are available for Tapered Implant Drills when drilling to the depth of 10mm and 12mm. Because of their geometry, Tapered Implant Drills Long are not to be used with stoppers.
 2. Use sufficient cooling during drilling.

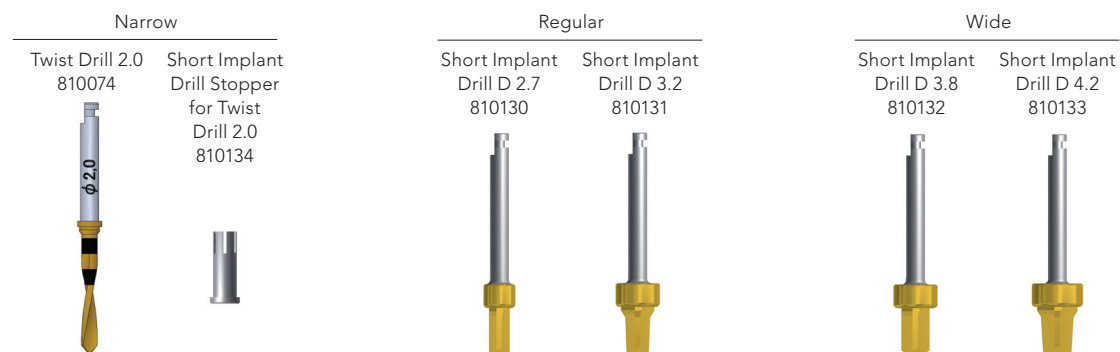
Tapered Implant Drill Long



Countersink Drills

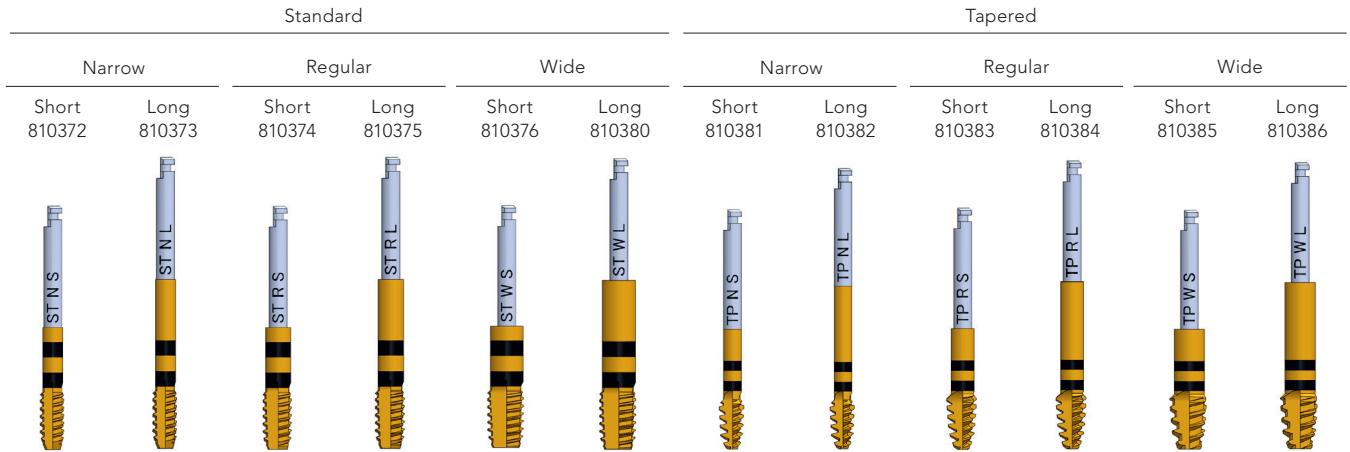


Short Implant Drills



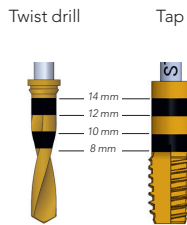
Scale: 1:1 Unit: mm

Tap for Standard and Tapered Implant

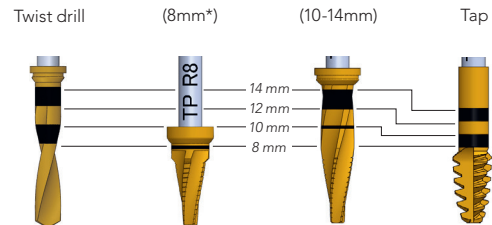


Tap for Standard and Tapered Implant - Position of laser marking

■ For Standard Implant



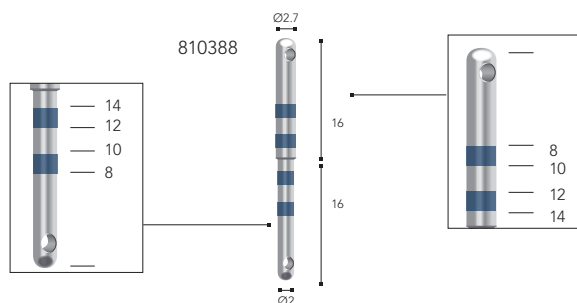
■ For Tapered Implant



*Except for 8 mm line, position of laser marking of Tapered Implant Tap is different from Twist Drill and Tapered Implant Drill in order to enable the appropriate insertion torque of implant. Therefore, except for 8 mm, the tapping depth is shallower than the implant length.

Direction and Depth Indicator S

Material: Titanium



Prosthetic Kit

Aadva Prosthetic Kit S

810393 Aadva Prosthetic Kit S, including instruments

Driver for SR & Ball Abutment
SR Abutment HP Driver

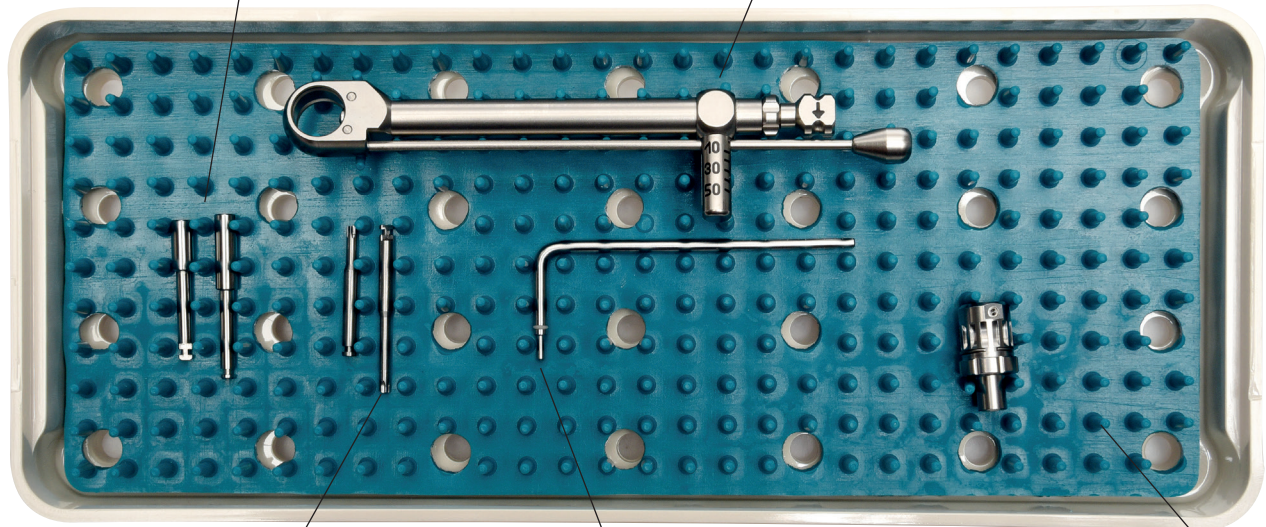
Short
810283

Middle
810284

Torque Wrench S

Not included in the Kit

810389



Screw Driver HP

Short
810277

Middle
810278

Abutment Remover

810287

Wrench Adaptor S for HP instruments

Not included in the Kit

810460

Torque recommendations



▀ Abutment screw, mono-block abutment and ball abutment: 20 N/cm



▀ SR abutment prosthetic screw: 10 N/cm



▀ Locator abutment: 30 N/cm

Screw Drivers

Screw Driver HP

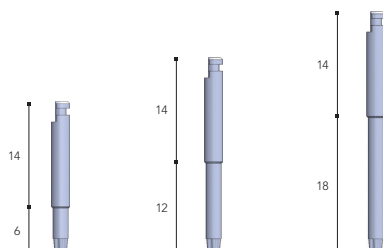
* Used with Handpiece (Motor) or Wrench Adaptor



Short
810277

Middle
810278

Long
810279



Screw Driver Wrench

* Used with the Torque Wrench

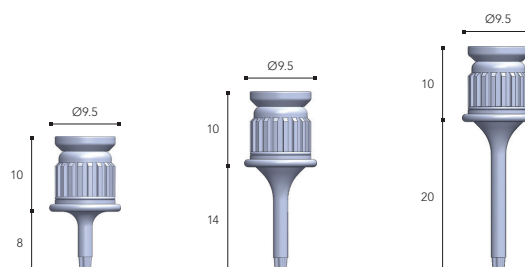


Short
810280

Middle
810281

Material: Stainless Steel

Long
810282



SR Abutment Drivers - Clef de Vissage Pilier SR et Boule

• For SR Abutment and Ball Abutment.

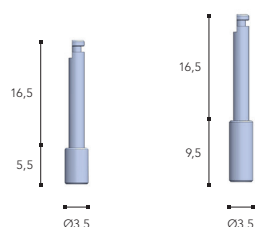
SR Abutment Driver HP

* Used with Handpiece (Motor) or Wrench Adaptor



Short
810283

Middle
810284



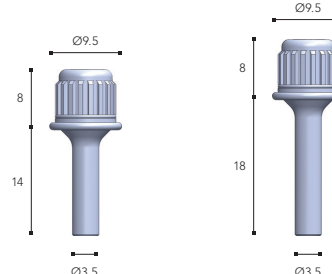
SR Abutment Driver Wrench

* Used with the Torque Wrench



Short
810285

Middle
810286



Material: Stainless Steel

Torque Wrench S



97.5

810389

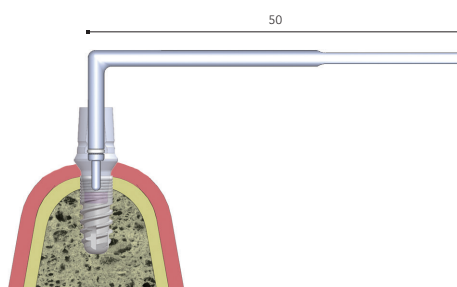
Material: Stainless Steel

Abutment Remover

Abutment Remover

810287

Material: Stainless Steel



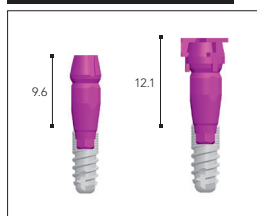
Scale: 1:1 Unit: mm



Impression taking

Implant Impression Copings

Transfer Type



Transfer Cap

- Quantity: 10
- Material: Plastic

Implant Impression Coping Transfer

- Includes Transfer Cap (Quantity: 5) and Transfer Screw (Quantity: 1).

Material: Titanium Alloy

Narrow



810234

Regular



810235

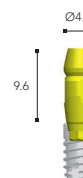
Wide



810236



810051



810052



810053

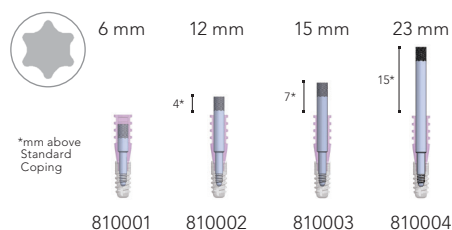
Pick Up Type

Implant Impression Coping Pick Up

Material: Titanium Alloy

Implant Guide Pin

Material: Titanium Alloy



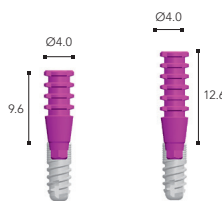
810001

810002

810003

810004

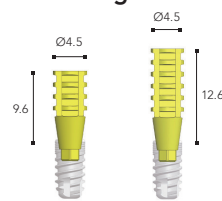
Narrow



standard
810048

long
810119

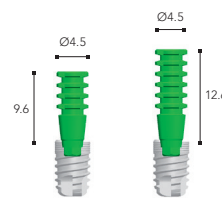
Regular



standard
810049

long
810120

Wide



standard
810050

long
810121

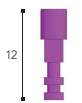
Sets:

- 810116 Implant Impression Coping PickUp Set EPH Narrow Standard (Coping + Pin 12 mm)
- 810117 Implant Impression Coping PickUp Set EPH Regular Standard (Coping + Pin 12 mm)
- 810118 Implant Impression Coping PickUp Set EPH Wide Standard (Coping + Pin 12 mm)
- 810122 Implant Impression Coping PickUp Set EPH Narrow Long (Coping + Pin 15 mm)
- 810123 Implant Impression Coping PickUp Set EPH Regular Long (Coping + Pin 15 mm)
- 810124 Implant Impression Coping PickUp Set EPH Wide Long (Coping + Pin 15 mm)

Implant Analog

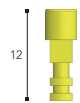
Material: Titanium Alloy

Narrow



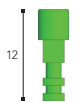
810018

Regular



810019

Wide



810020

Provi Abutment

- Includes Abutment Screw.

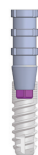
Recommended Torque
20 N•cm

Material: Titanium Alloy

Hexed

Anti-Rotational

Provi Abutment
Hexed
Narrow



810010

Provi Abutment
Hexed
Regular/Wide



810011

Non Hex

Non Anti-Rotational

Provi Abutment
Non Hex
Narrow



810012

Provi Abutment
Non Hex
Regular/Wide



810013

Material: Titanium Alloy

Abutment Screw



810005

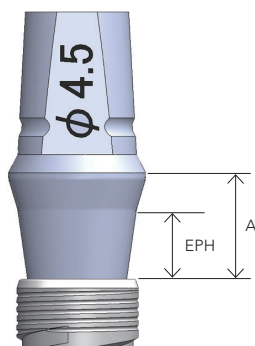
Scale: 1:1 Unit: mm



Abutments

Ready Abutments

Material: Titanium Alloy



Hexed
Anti-Rotational

Recommended Torque
20 N•cm

Ready Abutment Hexed Narrow

- Includes Abutment Screw.

	Ø4.5			
EPH	0.4	1.0	2.5	4.0
Height A	0.8	2.0	3.5	5.0
	810304	810150	810151	810152

Ready Abutment Hexed Regular/Wide

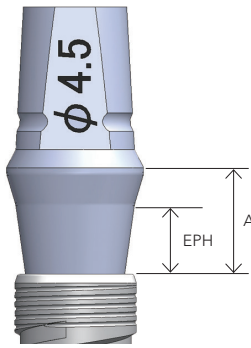
- Includes Abutment Screw.

	Ø4.5			
EPH	0.4	1.0	2.5	4.0
Height A	0.8	2.0	3.5	5.0
	810305	810153	810154	810155

	Ø6.5		
EPH	1.0	2.5	4.0
Height A	2.0	3.5	5.0
	810156	810157	810158

Ready Abutments

Material: Titanium Alloy



Non Hex
Non Anti-Rotational

Recommended Torque
20 N•cm

Ready Abutment Non Hex Narrow

- Abutment Screw integrated

		Ø4.5		
EPH		1.0	2.5	4.0
Height A		2.0	3.5	5.0
		810159	810160	810161

Ready Abutment Non Hex Regular/Wide

- Abutment Screw integrated.

		Ø4.5		
EPH		1.0	2.5	4.0
Height A		2.0	3.5	5.0
		810162	810163	810164

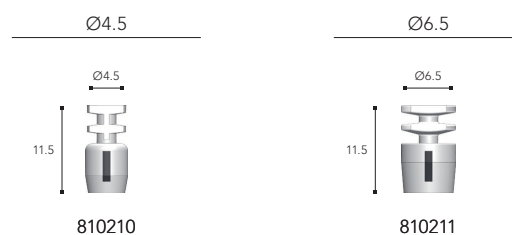
		Ø6.5		
EPH		1.0	2.5	4.0
Height A		2.0	3.5	5.0
		810165	810166	810167

Ready Abutments - Impression & Prosthetic Tools

Ready Abutment Impression Cap

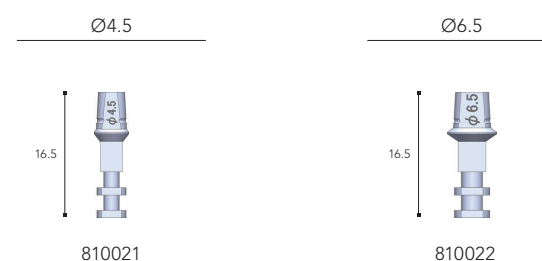
- Compatible with:
Ready Abutment Hexed
Ready Abutment Non Hex

Material: Plastic



Ready Abutment Analog

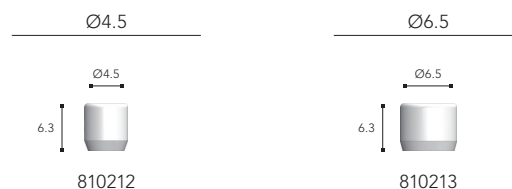
Material: Titanium Alloy



Ready Abutment Protective Cap

- Compatible with:
Ready Abutment Hexed
Ready Abutment Non Hex

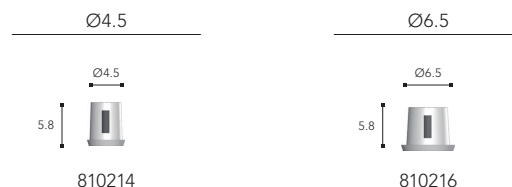
Material: Plastic



Ready Abutment Burnout Cap Crown

- Compatible with:
Ready Abutment Hexed

Material: Plastic



Ready Abutment Burnout Cap Bridge

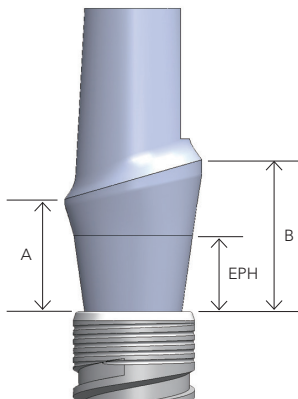
- Compatible with:
Ready Abutment Hexed
Ready Abutment Non Hex

Material: Plastic



Smart Abutments (Straight)





Material: Titanium Alloy



Recommended Torque
20 N•cm





Smart Abutment Narrow




- Includes Abutment Screw.

		Ø4.5			
EPH	0.4	1.0	2.5	4.0	
Height A	0.8	2.2	3.7	5.2	
Height B	2.1	3.5	5.0	6.5	
					
	810306	810054	810055	810056	

Smart Abutment Regular/Wide

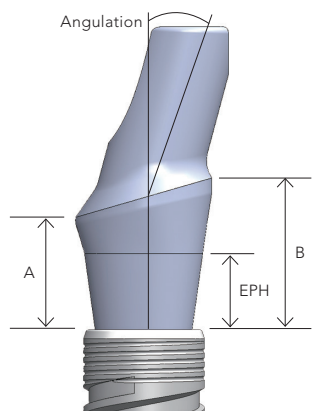
- Includes Abutment Screw.

		Ø4.5			
EPH	0.4	1.0	2.5	4.0	
Height A	0.8	2.2	3.7	5.2	
Height B	2.1	3.5	5.0	6.5	
					
	810307	810057	810058	810059	

		Ø6.5		
EPH		1.0	2.5	4.0
Height A		2.2	3.7	5.2
Height B		3.5	5.0	6.5
				
		810060	810061	810062

Smart Abutments (Angulated 15°)





Material: Titanium Alloy



Recommended Torque
20 N•cm





Smart Abutment 15° Narrow




- Includes Abutment Screw.

	Ø4.5			
EPH	0.4	1.0	2.5	4.0
Height A	0.8	2.2	3.7	5.2
Height B	2.1	3.5	5.0	6.5
				
	810308	810063	810064	810065

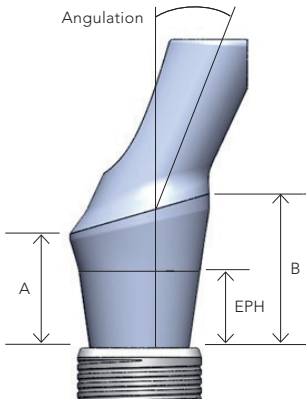
Smart Abutment 15° Regular/Wide

- Includes Abutment Screw.

	Ø4.5			
EPH	0.4	1.0	2.5	4.0
Height A	0.8	2.2	3.7	5.2
Height B	2.1	3.5	5.0	6.5
				
	810309	810066	810067	810068

	Ø6.5		
EPH	1.0	2.5	4.0
Height A	2.2	3.7	5.2
Height B	3.5	5.0	6.5
			
	810069	810070	810071

Smart Abutments (Angulated 25°)



Material: Titanium Alloy

		Ø4.5			
EPH	0.4	1.0	2.5	4.0	
Height A	0.8	2.2	3.7	5.2	
Height B	2.1	3.5	5.0	6.5	
		810490	810491	810492	810493

Smart Abutment 25° Narrow

- Includes Abutment Screw.

		Ø4.5			
EPH	0.4	1.0	2.5	4.0	
Height A	0.8	2.2	3.7	5.2	
Height B	2.1	3.5	5.0	6.5	
		810494	810495	810496	810497

Smart Abutment 25° Regular/Wide

- Includes Abutment Screw.

		Ø6.5		
EPH	1.0	2.5	4.0	
Height A	2.2	3.7	5.2	
Height B	3.5	5.0	6.5	
		810498	810499	810500

Prep Abutments



Recommended Torque
20 N•cm

Material: Titanium Alloy

Prep Abutment Narrow

- Includes Abutment Screw.



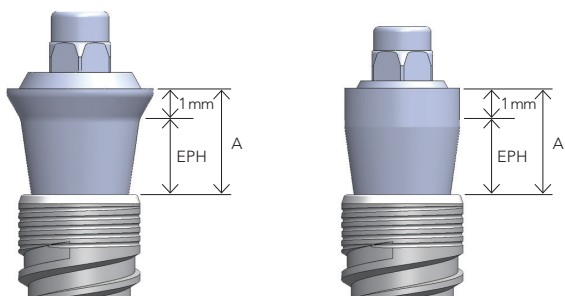
Prep Abutment Regular/Wide

- Includes Abutment Screw.



Scale: 1:1 Unit: mm

SR Abutments (Straight)



Non Hex
Non Anti-Rotational

Material: Titanium Alloy, Sterile

- Installed Using SR Abutment Driver
HP
Short: 810283
Middle: 810284
- Wrench
Short: 810285
Middle: 810286

Recommended Torque 20 N•cm

SR Abutment Narrow

• Includes SR Abutment Holder.

Ø3.8			
EPH	1.0	2.5	4.0
Height A	2.0	3.5	5.0
Height B			
	810168	810169	810170

SR Abutment Regular

• Includes SR Abutment Holder.

Ø3.8

Ø4.8

Ø3.8*			
EPH	1.0	2.5	4.0
Height A	2.0	3.5	5.0
Height B			
	810171	810172	810173

* CAUTION: Make sure that all prosthetic parts used are NARROW

Ø4.8			
EPH	1.0	2.5	4.0
Height A	2.0	3.5	5.0
Height B			
	810174	810175	810176

SR Abutment Wide

• Includes SR Abutment Holder.

Ø6.0			
EPH	1.0	2.5	4.0
Height A	2.0	3.5	5.0
Height B			
	810177	810178	810179

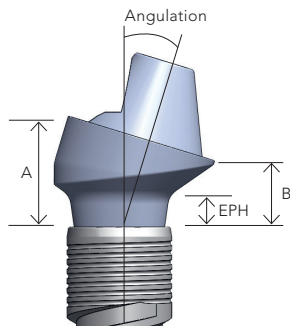
SR Abutments (Angulated)

SR Abutment 17°, 30° Narrow

Material: Titanium Alloy, Sterile

- Includes Angled SR Abutment Screw and Angled SR Abutment Holder.

Recommended Torque 20 N•cm

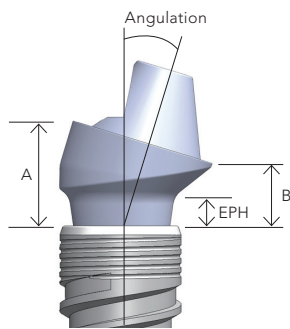


		Ø4.8			
		17°		30°	
EPH		1.0	2.5	1.0	2.5
Height A		3.5	5.0	4.5	6.0
Height B		2.1	3.6	2.1	3.6
		810310	810311	810312	810313

! Make sure that all prosthetic parts used are REGULAR

SR Abutment 17°, 30° Regular/Wide

- Includes Angled SR Abutment Screw and Angled SR Abutment Holder.



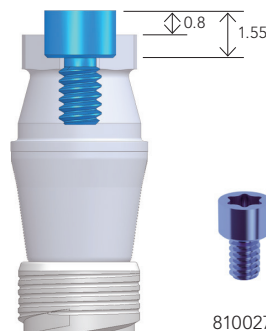
		Ø4.8			
		17°		30°	
EPH		1.0	2.5	1.0	2.5
Height A		3.5	5.0	4.5	6.0
Height B		2.1	3.6	2.1	3.6
		810180	810182	810181	810183

SR Ti Screw

Material: Titanium Alloy



Recommended Torque 10 N•cm

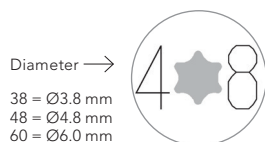


810027

SR Abutment Protective Cap

Material: Titanium

Example: Diameter = Ø4.8 mm



Ø3.8	Ø4.8	Ø6.0
3.5	3.95	3.95
810029	810030	810031

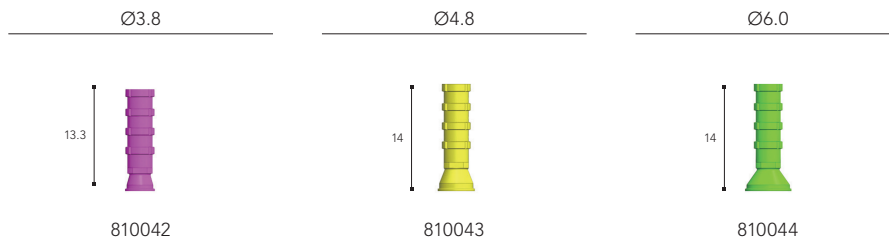
Recommended Torque 5 - 10 N•cm (Light Finger Force)

Scale: 1:1 Unit: mm

SR Abutments - Impression & Prosthetic Tools

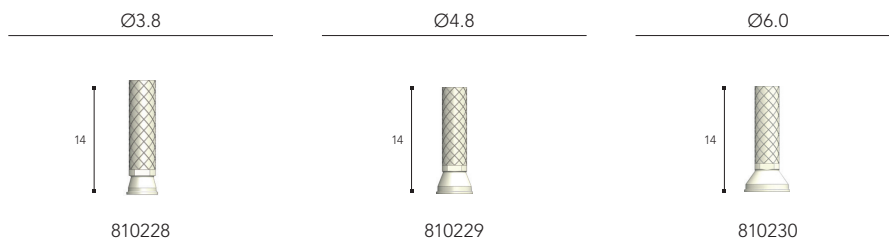
SR Abutment Provi Coping Ti

Material: Titanium Alloy



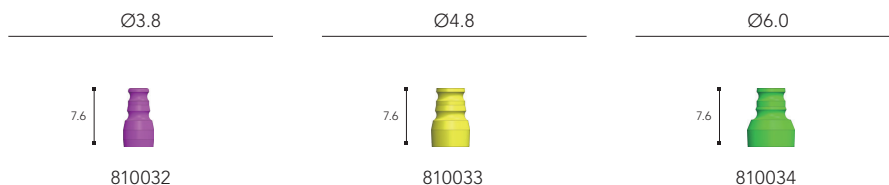
SR Abutment Provi Coping Plastic

Material: Plastic



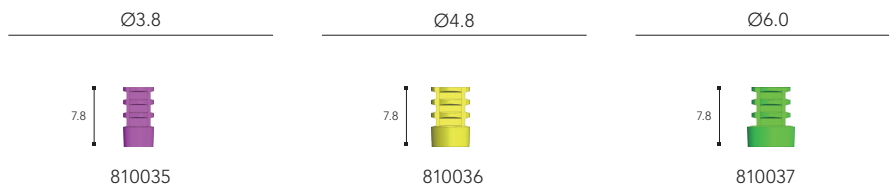
SR Abutment Impression Coping Transfer

Material: Titanium Alloy



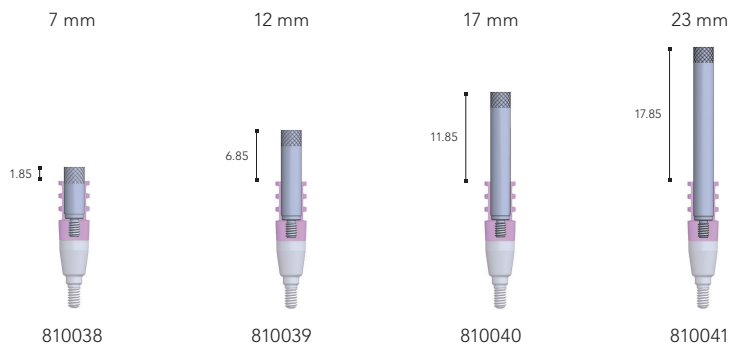
SR Abutment Impression Coping Pick u

Material: Titanium Alloy



SR Abutment Guide Pin

Material: Stainless Steel



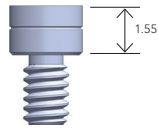
SR Abutments - Impression & Prosthetic Tools

SR Lab Screw



For Lab use only

Material: Stainless Steel



810028

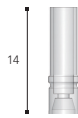
SR Plastic Cylinder

Material: Plastic

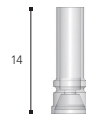
Ø3.8

Ø4.8

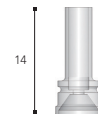
Ø6.0



810218



810219



810220

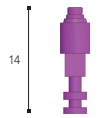
SR Abutment Analog

Material: Titanium Alloy

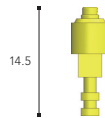
Ø3.8

Ø4.8

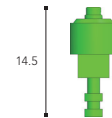
Ø6.0



810045



810046



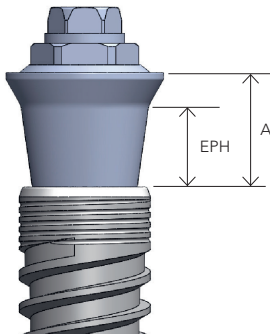
810047



Scale: 1:1 Unit: mm

SR Abutments single-unit

Material: Titanium Alloy



Hexed
Anti-Rotational

Recommended Torque
 20 N•cm

SR Abutment single-unit Narrow

- Includes Abutment Screw.

	Ø3.8		
EPH	1.0	2.5	4.0
Height A	2.0	3.5	5.0
	Ø3.8	Ø3.8	Ø3.8
	810467	810468	810469

SR Abutment single-unit Regular

- Includes Abutment Screw.

	Ø3.8		
EPH	1.0	2.5	4.0
Height A	2.0	3.5	5.0
	Ø3.8	Ø3.8	Ø3.8
	810470	810471	810472

	Ø4.8		
EPH	1.0	2.5	4.0
Height A	2.0	3.5	5.0
	Ø4.8	Ø4.8	Ø4.8
	810473	810474	810475

SR Abutment single-unit Wide

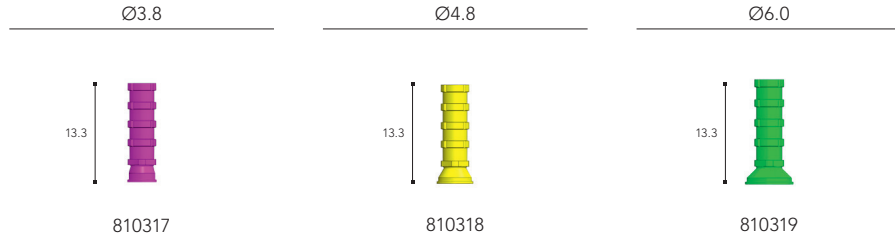
- Includes Abutment Screw.

	Ø6.0		
EPH	1.0	2.5	4.0
Height A	2.0	3.5	5.0
	Ø6.0	Ø6.0	Ø6.0
	810476	810477	810478

SR Abutments single-unit - Impression & Prosthetic Tools

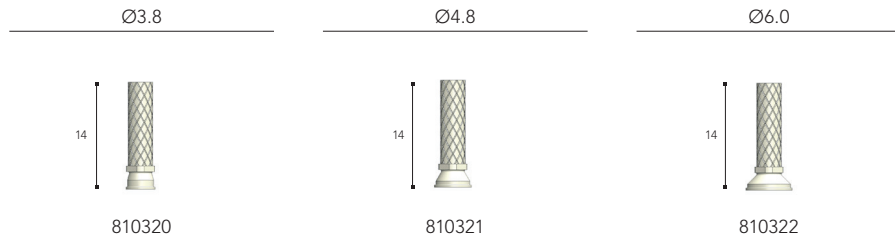
SR Abutment Provi Coping Ti single-unit

Material: Titanium Alloy



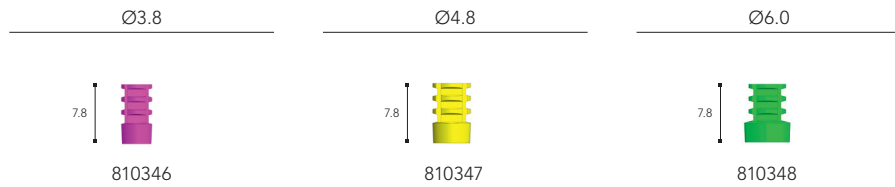
SR Abutment Provi Coping Plastic single-unit

Material: Plastic



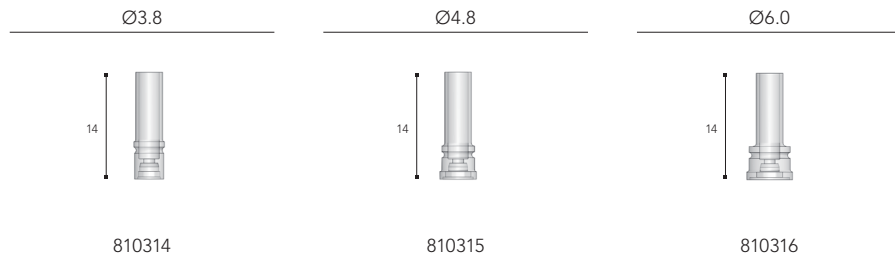
SR Abutment Impression Coping Pick up single-unit

Material: Titanium Alloy



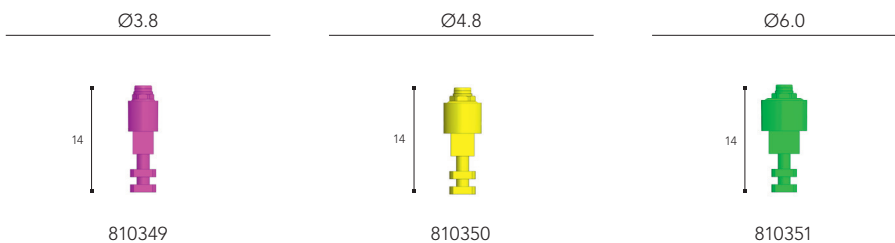
SR Plastic Cylinder single-unit

Material: Plastic



SR Abutment Analog single-unit

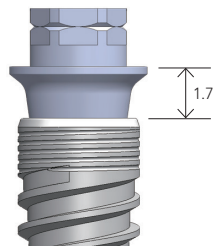
Material: Titanium Alloy



UCLA Abutments

• Includes UCLA Waxing Sleeve and Abutment Screw.

Material: Gold Alloy



Recommended Torque
20 N•cm

Hexed
Anti-Rotational

**UCLA Abutment
Hexed
Narrow**



810006

**UCLA Abutment
Hexed
Regular/Wide**



810007

Non Hex
Non Anti-Rotational

**UCLA Abutment
Non Hex
Narrow**



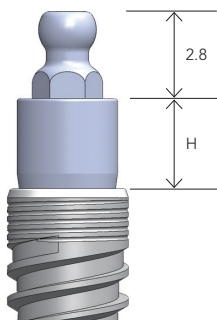
810008

**UCLA Abutment
Non Hex
Regular/Wide**



810009

Ball Abutments



• Installed Using SR Abutment Driver HP
Short: 810283
Middle: 810284

Wrench
Short: 810285
Middle: 810286

Recommended Torque
20 N•cm

Ball Abutment Narrow

Material: Titanium Alloy, Sterile

• Includes Ball Abutment Holder



H1.0



810184

H3.0



810185

H5.0



810186

Ball Abutment Regular/Wide

Material: Titanium Alloy, Sterile

• Includes Ball Abutment Holder



H1.0



810187

H3.0



810188

H5.0



810189

Ball Abutments

Ball Attachment Cap

- O-Ring pre-mounted.

Material: Titanium Alloy



O-Ring (Ball Attachment)

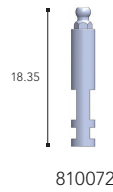
- Quantity: 10

Material: Nitrile Rubber



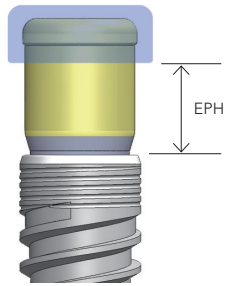
Ball Abutment Analog

Material: Stainless Steel



Locator™ Abutments

Material: Titanium Alloy



Recommended Torque
30 N•cm

Locator™ Abutment Narrow

EPH	1.0	2.0	3.0	4.0	5.0	6.0
	810098	810099	810100	810101	810102	810103

Locator™ Abutment Regular/Wide

EPH	1.0	2.0	3.0	4.0	5.0	6.0
	810104	810105	810106	810107	810108	810109

*Locator™ is a registered trademark of Zest Anchors, LLC

Scale: 1:1 Unit: mm

Locator™ Abutments - Prosthetic Tools

Locator™ Core Tool

- Quantity: 1
- Material: Stainless Steel



Locator™ Impression Coping

- Quantity: 4 810111
- Material: Aluminum Alloy



Locator™ Male Processing Package

- Quantity: 2 packs 810112
- Includes Denture Cap with Black Processing Male, 3 Replacement Males (Blue, Pink, Clear), Replacement Males and White Block-Out Spacer



Locator™ Female Analog (4 mm Diameter)

- Quantity: 4 810113
- Material: Aluminum Alloy



Further original Locator™ items, as e.g. shown below, please purchase from your dental dealer

Locator™ Insert Driver (Latch-Type Connection)

- Quantity: 1
- Material: Stainless Steel
- * used with the Handpiece (Motor)

810129
23 mm



Locator™ Angle Measurement Guide

- Quantity: 1
- Material: Stainless Steel



Locator™ Parallel Post

- Quantity: 4
- Material: Polyethylene



Locator™ Black Processing Replacement Male

- Quantity: 4
- Material: Polyethylene



Locator™ Processing Spacer

- Quantity: 4
- Material: POM



Locator™ Abutment Holder/Retaining Sleeve

- Quantity: 4
- Material: Polysulfone



Locator™ Replacement Male

- Quantity: 4
- Material: Nylon

Farbe		Retention
blue / bleu		1.5 lbs. / 680 g
pink / rose		3 lbs. / 1,361 g
transparent		5 lbs. / 2,268 g
grey / gris		0 lbs. / 0 g
red / rouge		0.5-1.5 lbs. / 226-680 g
orange		2 lbs. / 907 g
green / vert		3-4 lbs. / 1,361-1,814 g

Locator™ White Block-Out Spacer

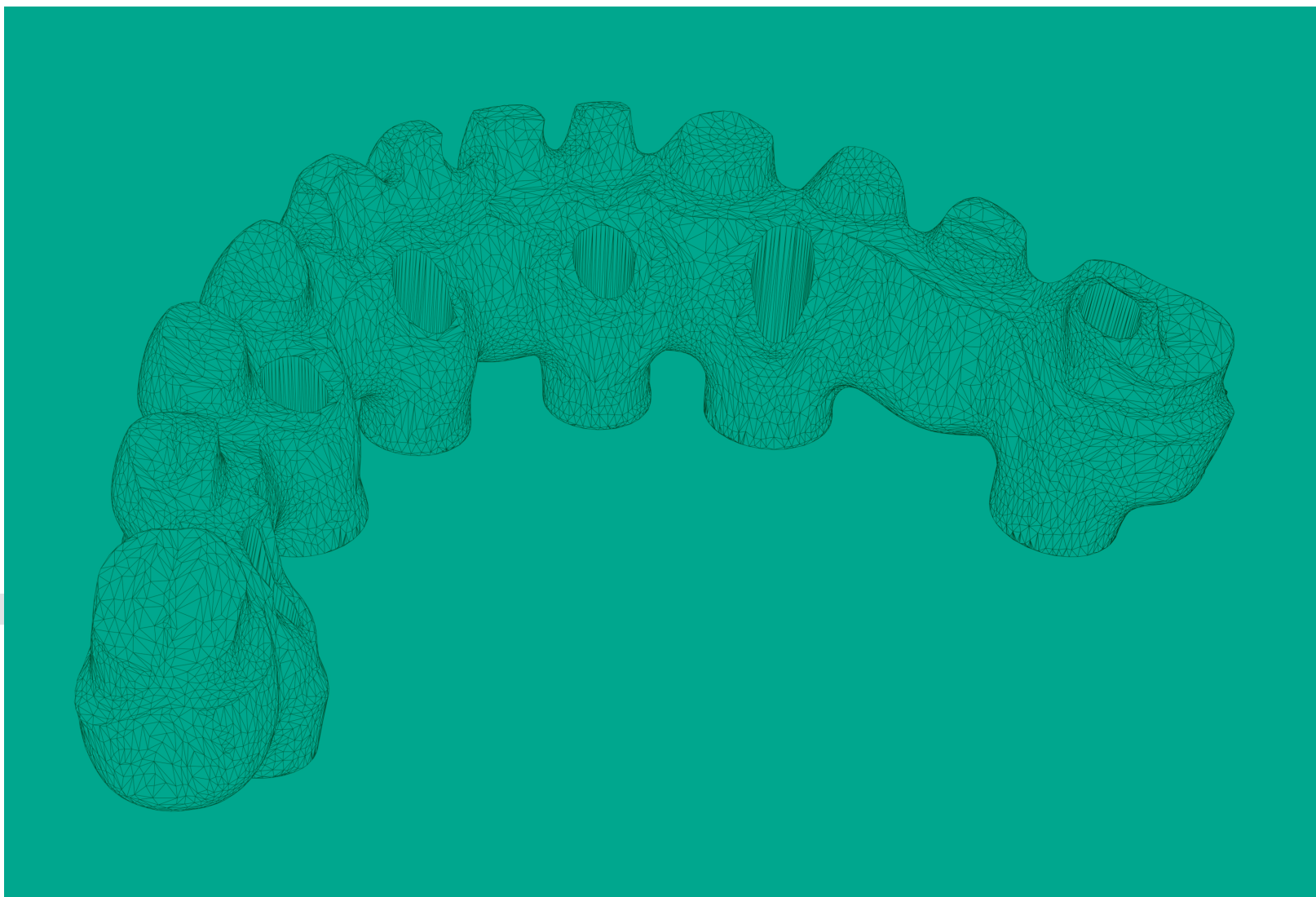
- Quantity: 20
- Material: Silicone



Locator™ Extended Range Male Processing Package

- Quantity: 2 packs
- Includes Denture Cap with Black Processing Male, 3 Replacement Males (Blue, Pink, Clear) and White Block-Out Spacer

Scale: 1:1 Unit: mm



Digital CAD/CAM solutions

Aadva Scan Body

Secure screw for easy handling in the mouth

Integrated in libraries of major digital systems

Radiopaque, colour-coded titanium connection reusable and sterilisable

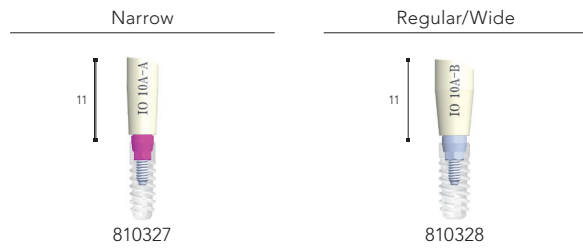


Dedicated analogs for 3D printed models

Offer precise positioning over uses

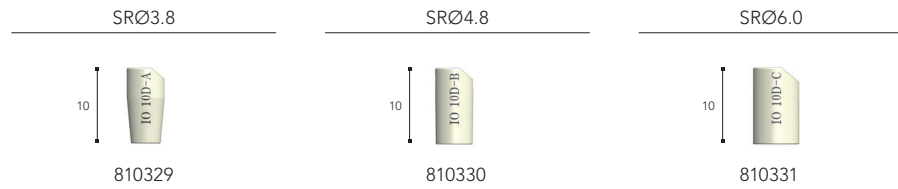
Aadva Scan Body

Material: Plastic, Titanium Alloy



Aadva SR Abutment Scan Body

Material: Plastic, Titanium Alloy



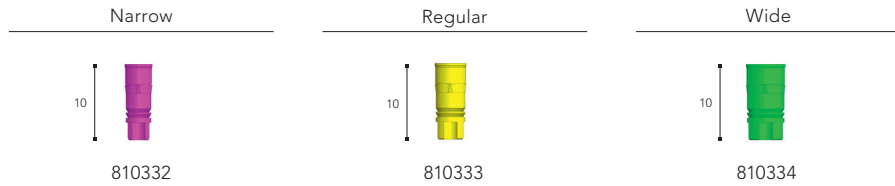
Scale: 1:1 Unit: mm



Aadva Printed Model Analog

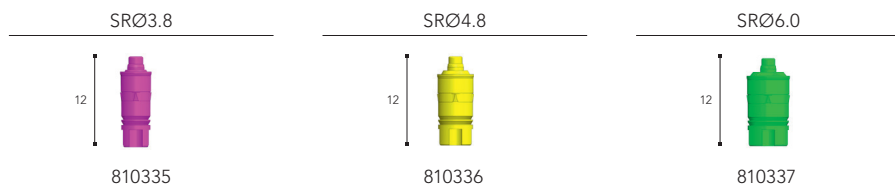
Printed Model Analog

Material: Titanium Alloy



Printed Model SR Abutment Analog

Material: Titanium Alloy

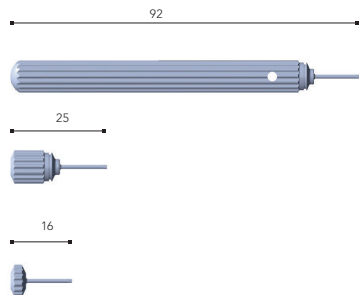


Scale: 1:1 Unit: mm



Tools

Screw Driver for Aadva Scan Body



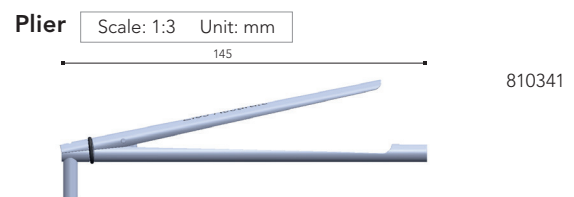
Long
810340

Short
810339

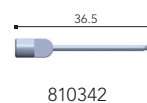
Very short
810338

Scale: 1:2 Unit: mm

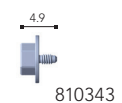
Tools for Printed Model Analog



Insertion Pin x2

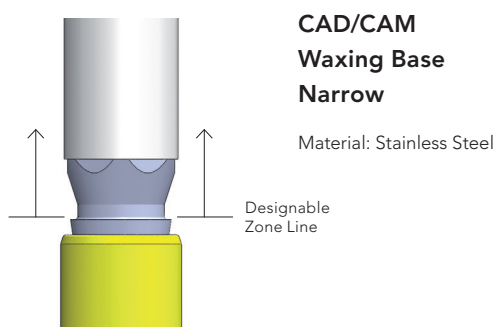


Insertion Screw x5

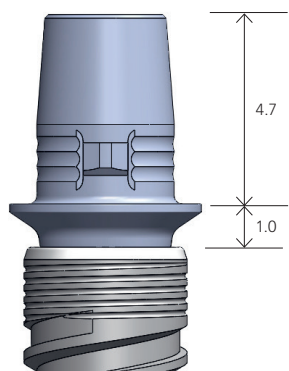


Scale: 1:2 Unit: mm

CAD/CAM Tools



Universal Hybrid Abutment



Recommended Torque
20 N•cm

- Includes Abutment Screw.

Material: Titanium Alloy

Universal Hybrid Abutment Narrow



Universal Hybrid Abutment Regular/Wide



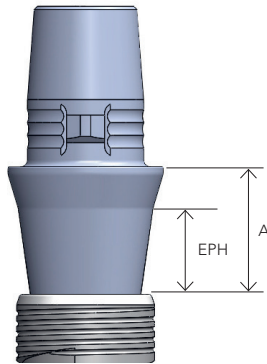
Scan Post for Universal Hybrid Abutment Narrow



Scan Post for Universal Hybrid Abutment Regular/Wide



Ti-Base Abutments



Recommended Torque
20 N•cm

Material: Titanium Alloy

Ti-Base Abutment Narrow

- Includes Abutment Screw.












S-type

Ti-Base Abutment Regular/Wide

- Includes Abutment Screw.

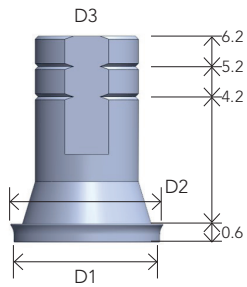
L-type



OPTIMAL FOR HEALING SCREW VARIO				
	LOW	MEDIUM	HIGH	
		Ø4.5, S-type		
EPH Height A	0.4 0.8	1.0 2.0	2.5 3.5	4.0 5.0
	4.7 	4.7 	4.7 	4.7 
		810479	810480	810481
		Ø4.5, L-type		
EPH Height A	0.4 0.8	1.0 2.0	2.5 3.5	4.0 5.0
	4.7 	4.7 	4.7 	4.7 
		810483	810484	810485
		Ø6.5, L-type		
EPH Height A		1.0 2.0	2.5 3.5	4.0 5.0
		4.7 	4.7 	4.7 
		810487	810488	810489

Scale: 1:1 Unit: mm

Ti-Base for SR abutment



Recommended Torque
10 N•cm

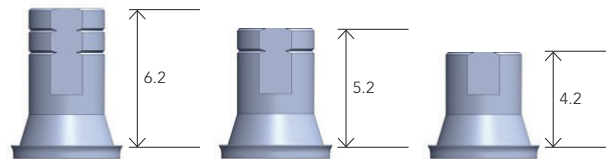
Material: Titanium Alloy

Ref.		D1	D2	D3
810396	SR Ti-Base Ø3.8	3.8	4.0	3.2
810397	SR Ti-Base Ø4.8	4.8	5.0	3.4
810398	SR Ti-Base Ø6.0	6.0	6.2	3.8

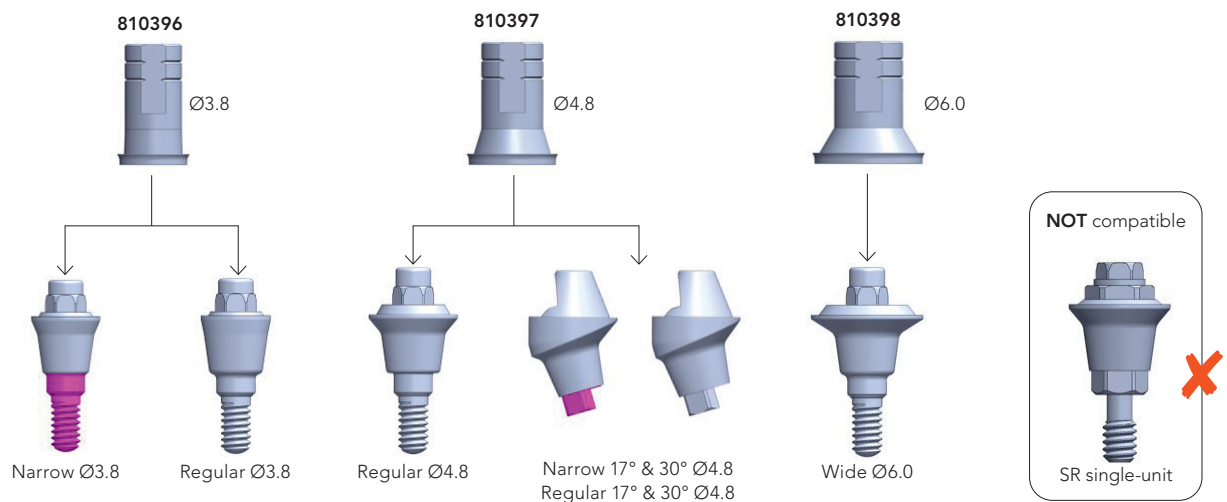
[mm]

Adjustable height

- The height of the Ti-Base can be adjusted and adapted to the specific case requirement by cutting the post at the marking line.
- The digital library contains 3 kind of libraries of Ti-Base for SR Abutment with the 3 different heights.



Compatibility with the SR abutment range – overview



SR Ti-Base	compatible with SR Abutment	
SR Ti-Base Ø3.8	SR Abutment Narrow Ø3.8 EPH 1.0	SR Abutment Regular Ø3.8 EPH 1.0
	SR Abutment Narrow Ø3.8 EPH 2.5	SR Abutment Regular Ø3.8 EPH 2.5
	SR Abutment Narrow Ø3.8 EPH 4.0	SR Abutment Regular Ø3.8 EPH 4.0
SR Ti-Base Ø4.8		SR Abutment Regular Ø4.8 EPH 1.0
		SR Abutment Regular Ø4.8 EPH 2.5
	SR Abutment 17° Narrow Ø4.8 EPH 1.0	SR Abutment Regular Ø4.8 EPH 4.0
	SR Abutment 17° Narrow Ø4.8 EPH 2.5	SR Abutment 17° Regular/Wide Ø4.8 EPH 1.0
	SR Abutment 30° Narrow Ø4.8 EPH 1.0	SR Abutment 17° Regular/Wide Ø4.8 EPH 2.5
	SR Abutment 30° Narrow Ø4.8 EPH 2.5	SR Abutment 30° Regular/Wide Ø4.8 EPH 1.0
SR Ti-Base Ø6.0		SR Abutment 30° Regular/Wide Ø4.8 EPH 2.5
		SR Abutment Wide Ø6.0 EPH 1.0
		SR Abutment Wide Ø6.0 EPH 2.5
		SR Abutment Wide Ø6.0 EPH 4.0

Preferred Milling Partners

A Preferred Milling Partner is a milling centre with coordinated processes for GC Aadva implant related works and other GC based prosthetic works.

As a customer you will benefit from:

- high-precision restorations with an excellent surface quality
- high quality standards: materials and restorations are scientifically tested
- coordinated products and systems to finalize the restorations

We have established a cooperation with several licence partners.
Please check our website for the most recent overview of licence partners.

We trust that with these licence partners you will be able to source superior quality and services meeting today's requirements.
Our team of sales specialists remain at your disposal for any question you might have.





For more information
please contact:

GC Tech.Europe GmbH

Harkortstr. 2
D-58339 Breckerfeld
Germany
Tel.: +49 2338 801980
Fax: +49 2338 801985
info@gctech.eu
http://gctech.eu

For more information
please contact:

GC UNITED KINGDOM Ltd.

Coopers Court Newport Pagnell
Buckinghamshire
MK16 8JS
United Kingdom
Tel.: +44 1908 21 89 99
Fax: +44 1908 21 89 00
info.uk@gc.dental
http://uk.gceurope.com

