



Characteristics

- Shape memory properties
- Efficient
- Superelasticity
- Available in aesthetic version

BIO-ACTIVETM **light**

BIO-ACTIVETM

Force and flexibility
mastered



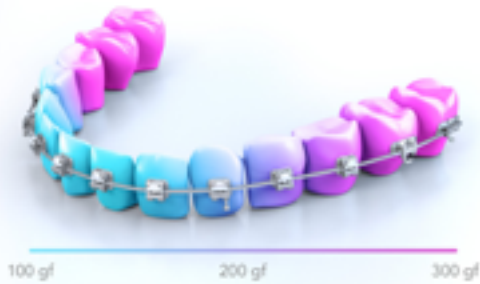
Experts in Orthodontics

GC Orthodontics America
www.gorthodontics.com

BIOACTIVE™ light allows you begin treatment with large diameter archwires (.020" x .020") and activate third-order bends. Size .018" x .018" will soon be available. The biomechanical properties (force, superelasticity and shape memory) are equivalent to small diameter archwires such as Initialloy™ .014" (50 gf) on the incisors, Initialloy™ .018" (150 gf) on the lateral section and Initialloy™ .020" (230 gf) on the molars.

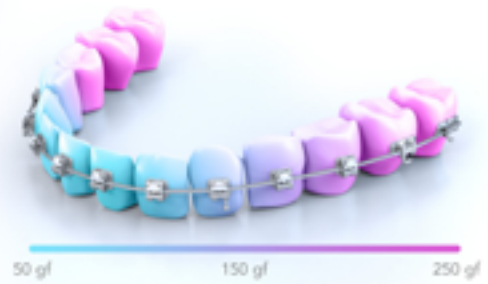
BIO-ACTIVE™

- .016"x.016" and .016"x.022"-Archwires 80g (Incisors) - 240g (Molars)
- .018"x.018" and .021"x.028"-Archwires 100g (Incisors) à 300g (Molars) in standard version



BIO-ACTIVE™ light

- .018"x.018" and .020"x.020"-Archwires 50g (Incisors) - 250g (Molars) in light version

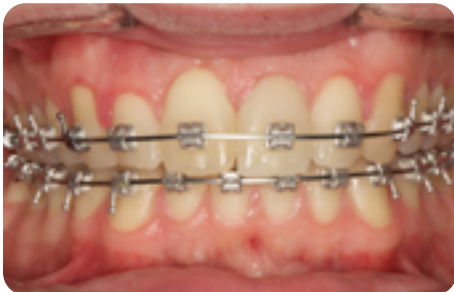


Clinical Case BIO-ACTIVE™ light

Sebastian L. *13.10.2016



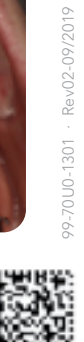
Sebastian L. * 21.12.2016



*Photos by Dr. Stéfano Troiani (DDS, MSc), Siegen (Germany)

For more information go to www.gcorthodontics.eu

This healthcare product is a regulated Class II medical device conforming to CE marking regulations. Reserved for healthcare professionals. Read instructions on information label carefully before using



GC Orthodontics America
 11535 S, Central Avenue · Alsip, IL 60803 · USA
 Tel 888-332-4883 · info.gco.usa@gc.dental