

# Chic. mini

## Mini Ceramic Bracket An aesthetic revolution

Hi Aesthetic



### Features

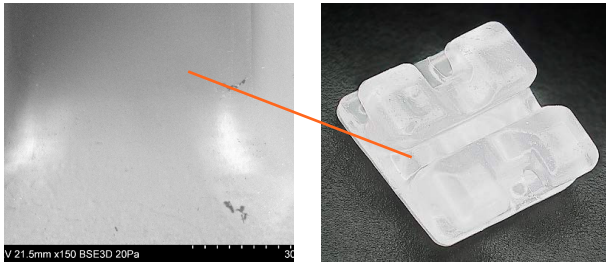
- Discreet design
- Designed for patient comfort
- Transparent, pure alumina Polycrystalline ceramic
- Fine particles
- Mimicking
- Designed to minimize staining
- Notch for easy removal



GC Orthodontics Europe GmbH

Harkortstraße 2 · 58339 Breckerfeld · Germany  
Tel +49.2338.801.888 · info.gco.germany@gc.dental





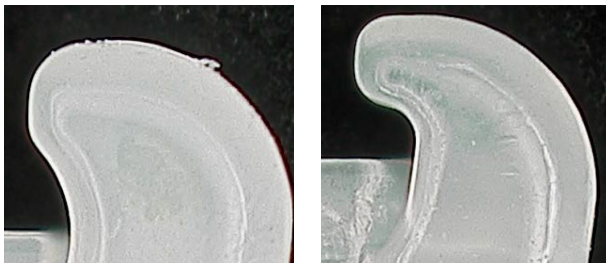
## Low friction

The chamfered parts at the ends of the groove are injected as a single piece, eliminating protrusions caused by the mold seal, and reducing the risk of bowing under severe conditions. Additionally, a unique groove polishing process helps achieve smooth arc sliding.



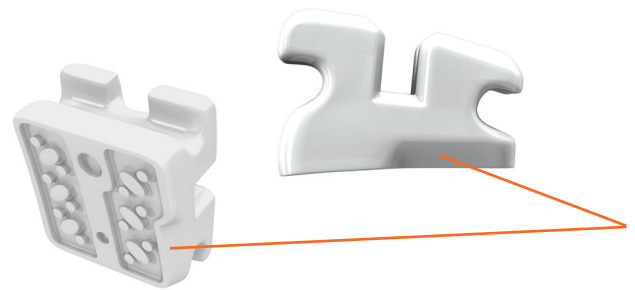
## Mini size

The new design for lower incisors is intended to optimize space between brackets, which may assist in archwire insertion during the first appointment, particularly in cases of severe crowding.



## Hook: new design

This new hook shape secures elastics or chains.



## Easy removal

With its preformed notch on the base, Chic. mini can be safely applied while maintaining adhesion strength, offering similar performance as a full-size bracket.



**Chic. mini is manufactured by TOMY Inc.**, a well-known bracket manufacturer since 2000. Brackets are available in standard and mini sizes.  
Available in MBT Type and Roth Type.

## Bracket & Archwire Combination

Pair Chic with our Initalloy NiTi memory archwires, Bio-Active, and Bio-Edge. Rhodium-treated archwires are also available for enhanced aesthetic appeal.



We recommend using GC Ortho Connect™ for bonding your brackets. This is an one step system with the primer included in the composite.

