

LEGEND

mini/medium Rhodium

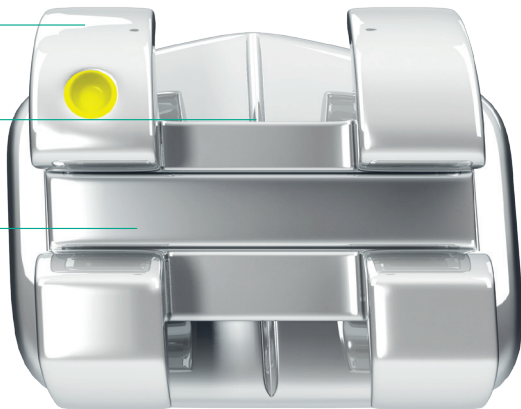
Standard Metal Rhodium Bracket

Rh Rhodium

Rhomboid bracket
For easy bracket placement

Long axis line
For accurate positioning

Aerospace steel



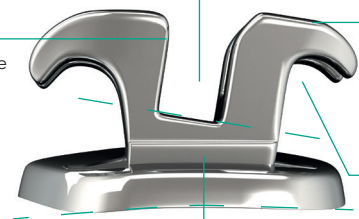
Triple chamfered slot
For easy wire engagement and to eliminate archwire binding & notching

CNC milled slot

Smooth swept tie wings
Engineered to minimize occlusal interference

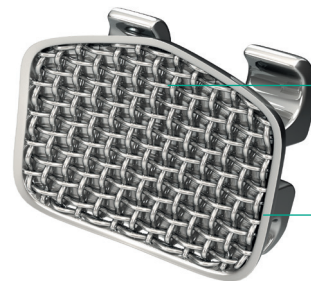
Large undercuts
For easy ligation

Torque in base



Micro-etched, 80 gauge mesh pad
Better bonding strength

Anatomic base
Follows the curve of each tooth

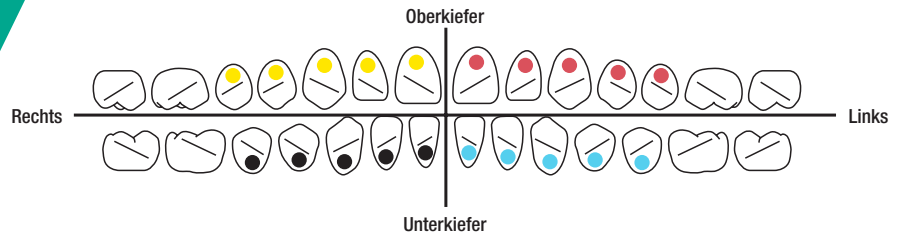


LEGEND™ mini Rhodium features the same characteristics as the standard bracket but with enhanced aesthetics. LEGEND™ mini is manufactured by metal injection (MIM) and its slot undergoes a CNC (Computer Numerical Controlled) process guaranteeing an exact slot size of .018" x .018" or .022" so that the bracket information is precisely expressed. Its anatomical mesh base ensures maximum bracket retention on the tooth.



Design Features

- Made out of aerospace strength steel
- Rhodium coated for improved aesthetic
- Laser-fused hook options designed for malleability and strength
- Anatomically correct bonding pad for each tooth
- In/Outs compatible between medium & mini



We recommend using GC Ortho Connect™ for bonding your brackets. This is a one step system with the primer included in the composite.

Bracket combinations

You can combine LEGEND™ Rhodium brackets with Chic Ceramic brackets for a complete aesthetic result.



The LEGEND™ range is manufactured by TOMY Inc. in Yumoto, Japan.

Orthodontists worldwide have been using TOMY brackets since the launch of their first bracket in 1961. Today, TOMY is recognized as one of the leading orthodontic manufacturers. LEGEND is available in standard and mini sizes, metal and rhodium finishes and in various prescriptions.

Available in MBT Type, Roth Type and Bi Dimensional.

Bracket & Archwire Combination

Combining LEGEND Rhodium with our Initalloy, BIO-ACTIVE, and BIO-EDGE thermal NiTi archwires. Rhodium-coated archwires are also available for a discreet orthodontic bracket system.

