

# everX Flow™

Short-fibre reinforced flowable composite

Strong  
to the core



# everX Flow from GC

## Strong to the core

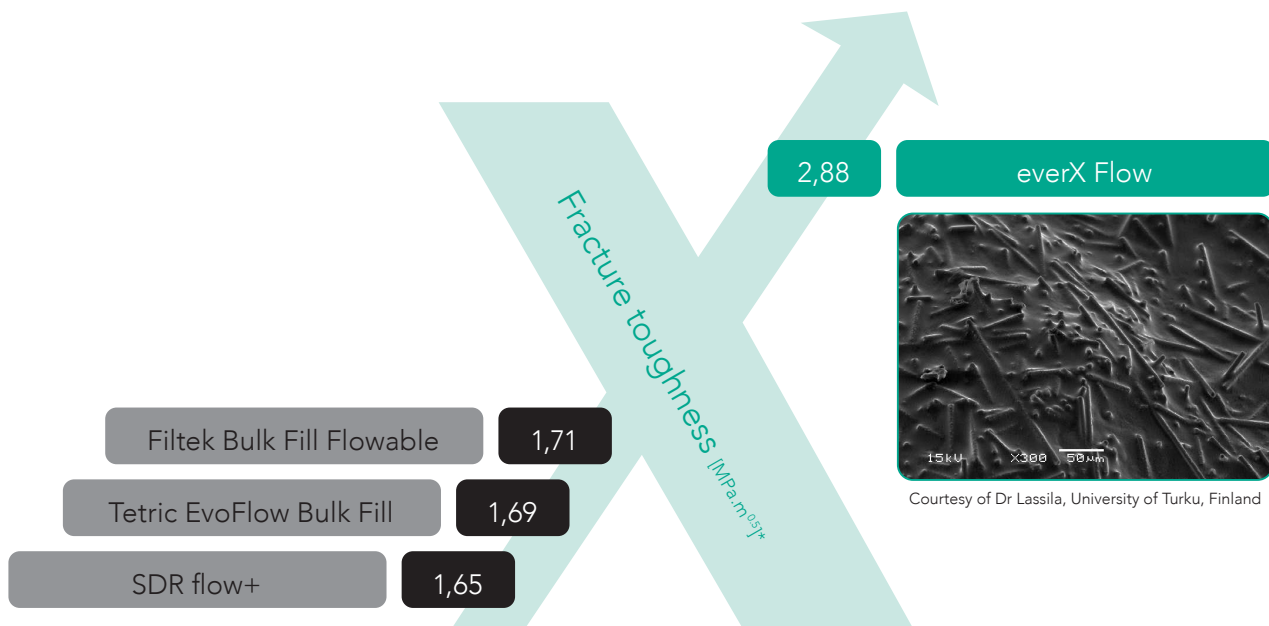
Discover **everX Flow**, a short-fibre reinforced flowable composite designed to **reinforce restorations**. Following the same principle as the iron rebar in construction, the glass fibres in **everX Flow** strengthen restorations and **prevent them from cracking**.

Now a new simplified procedure, allows **everX Flow** to be **directly placed into Class II cavities**, without coverage of the proximal surfaces. With its easy application, its two shades and its incredible strength, everX Flow is **your go-to product for all your direct restorations**, as well as **core build-up preparations**.



## A superior fracture toughness for durable large restorations

Most composites offer perfect features for enamel replacement: high wear resistance and aesthetics. However, they are not able to equal dentine when it comes to resistance to fracture. everX Flow overcomes this issue and possesses an **excellent fracture toughness close to that of dentine** thanks to a **high amount of short fibres** strongly bonded to the resin matrix. This enables the material to **efficiently reinforce large posterior restorations**, in combination with a conventional composite as enamel layer.



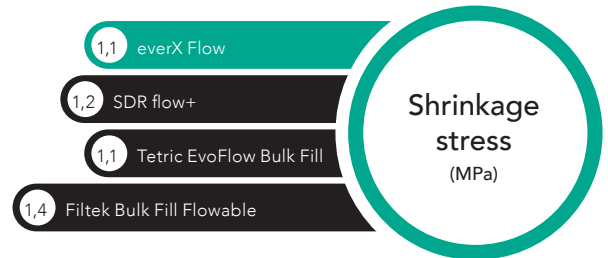
\* Source: GCC R&D - Data on file.  
Test performed following ASTM E399-90 (1997).

# Perfect thixotropy for an **easy placement** and a **great adaptation**



Courtesy of  
Dr Javier Tapia Guadix, Spain

Thanks to its optimal thixotropy, everX Flow will easily **adapt to every preparation** and help to **avoid porosities**. Its controlled flow also enables you to place it in upper molars **without slumping**.



Source: GCC R&D - Data on file.

## Two shades to answer **all your needs**



Optimal for **deep posterior cavities**

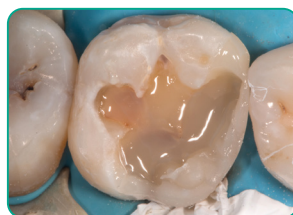


Optimal for **more aesthetic results** and for **core build-up**

## Optimal to **reinforce** large cavities and achieve long-term **aesthetic results**



Cavity preparation



Application of **everX Flow**  
(Dentin shade)



Final layer with Essentia (Universal  
shade) or **G-aenial Posterior**



Post-operative situation

Courtesy of  
Georg Benjamin, Germany



Cavity preparation



Application of **everX Flow**  
(Bulk shade)



Final layer with **G-aenial Universal  
Injectable** (A3 shade)



Post-operative situation

Courtesy of  
Dr Lucile Dahan, France

# everX Flow from GC

## Strong to the core



**Bulk shade**  
for deep cavities

**Dentin shade**  
for highly aesthetic results



Prepare the cavity



In case of a Class II cavity, build the missing walls with a conventional composite or place everX Flow directly into the Class II or large cavity



Fill the cavity with everX Flow



Final result after covering with a conventional composite

everX Flow	
0139F012-0010	everX Flow, Syringe 2 ml (3.7g) Bulk shade
0139F013-0010	everX Flow, Syringe 2 ml (3.7g) Dentin shade

## Also discover



G-Premio BOND  
Universal bonding agent



G-aenial Universal Injectable  
High-strength injectable restorative



G-aenial A'CHORD  
Universal paste composite



G-aenial ANTERIOR / POSTERIOR  
Light-cured radiopaque composite restorative

everX Flow, G-Premio BOND, G-aenial Universal Injectable, G-aenial A'CHORD and G-aenial ANTERIOR / POSTERIOR are trademarks of GC. Filtek Bulk Fill Flowable, SDR flow+ and Tetric EvoFlow Bulk Fill are not trademarks of GC.

### GC ASIA DENTAL PTE LTD

5 Tampines Central 1,  
Tampines Plaza 2, #06-01  
Singapore 529541  
Tel. +65 6546 7588  
gcasia@gc.dental  
www.gc.dental/sea