



Since 1921
100 years of Quality in Dental



ADVANCING 40 YEARS OF CONSISTENT IMPRESSIONS

EXA Advanced™

Hydrophilic Vinyl Polysiloxane Impression Material

EXA Advanced™ Normal Set:

- Higher tear strength
- Consistently accurate
- No voids, no folds
- Exceptional value, cost effective
- Consistently great impressions every time



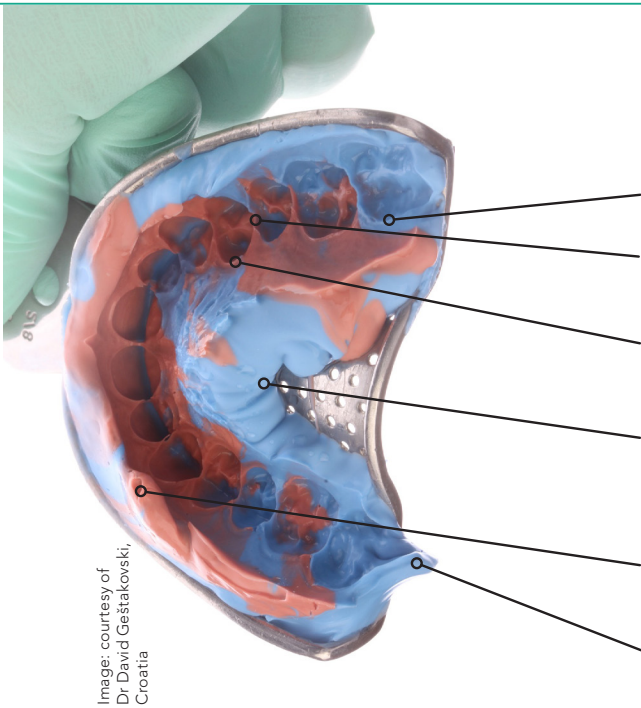


Image: courtesy of Dr. David Gešćakovski, Croatia

The quality of an EXA brand

Rigidity and elasticity in perfect balance for optimal results

Resistant to tearing for an accurate reproduction of the finest preparation margins.

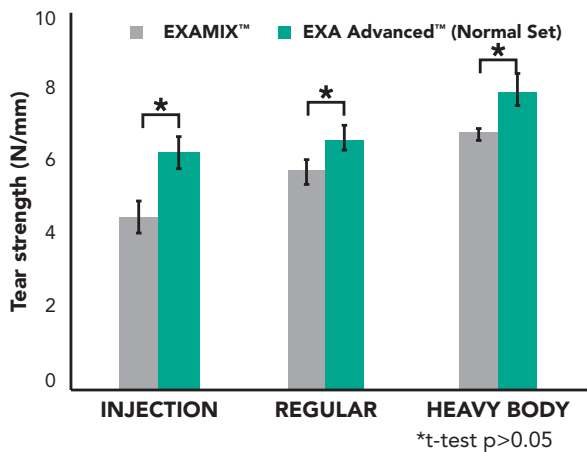
Hydrophilic to capture all details required for an accurate reproduction

Elasticity, together with a favourable smell and taste of the material for the best possible comfort for both patients and practitioners

Fully recovers from the deformation that takes place upon removal from the patient's mouth.

Maintains its accuracy during days of storage and transport, due to an excellent dimensional stability

Higher Tear Strength Compared to EXAMIX™



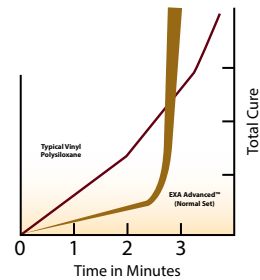
EXA Advanced™ (Normal Set) is an easy-to-use precision VPS impression material that flows better under pressure, is thixotropic, and has working time of up to 2 minutes. It offers exceptional dimensional stability, elastic recovery and tear strength, and "immediate pour" capability.

Snap Set Cure Rate

Extended Working Time

EXA Advanced™ (Normal Set) has a specifically designed cure rate with a "snap set" feature. This gives up to 2 minutes to manipulate and seat the material, but with less time in the mouth, something your patients will appreciate.

¹Data on file at GC America Inc.



Vinyl Polysiloxane Impression Material Usage Guide

Technique	Tray Material	Wash or Syringe Material
Single Mix Also Monophase, Medium Viscosity, Single Phase or Single Impression	● Monophase	● Monophase
Double Mix	● Heavy Body OR ● Monophase +	● Regular OR ● Injection
Double Arch - Three Function	● Monophase OR ● Heavy Body +	● Regular OR ● Injection
Putty-Wash Also 2-Step Putty Wash	● Putty +	● Regular OR ● Injection
Simultaneous Also 1-Step Putty Wash or Dimple Technique	● Putty +	● Regular OR ● Injection

Normal Set:

138200 EXA Advanced™ Heavy Body Normal Set 2 Pack
138400 EXA Advanced™ Regular Type Normal Set 2 Pack

138600 EXA Advanced™ Monophase Normal Set 2 Pack
138800 EXA Advanced™ Injection Type Normal Set 2 Pack

