

G-ænial® Universal Injectable

High Strength Restorative Composite

Transform the
way you work



Since 1921
100 years of Quality in Dental



Welcome to the future

G-ænial® Universal Injectable is destined to be a game-changer in restorative dentistry. With its unique characteristics it will truly transform the way you work.

World-leading technologies have enabled GC to define a new benchmark composite offering **exceptional strength, unsurpassed polishability** and fantastic, tooth-blending aesthetics.

But you'll be amazed at how it is **injectable and shapeable all at the same time**. It adapts perfectly to the cavity floor, but lets you build, shape and contour while you are injecting – because G-ænial® Universal Injectable doesn't slump!

It will also save you time and money because placement is so much faster and because you don't waste any material at all – you only use what is needed.

Try it for yourself and embrace the future!
You'll never look back.

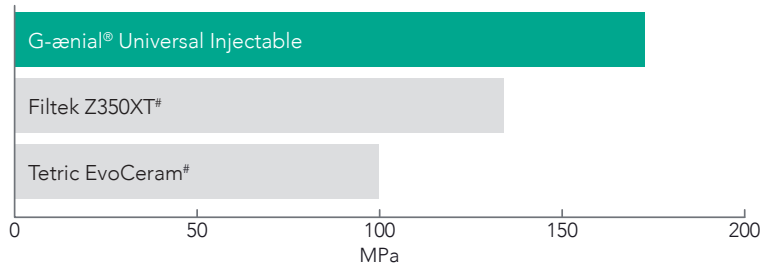


Our strongest direct restorative ever*

GC's world-leading filler technologies have allowed us to develop an injectable material that is significantly stronger than most conventional paste composite materials. It's a new paradigm in thinking that a composite with a more flowable consistency is actually your strongest option!

Exceptional
strength
and wear
resistance

Flexural strength



GC R&D Data on file

Inject, shape and contour all at once

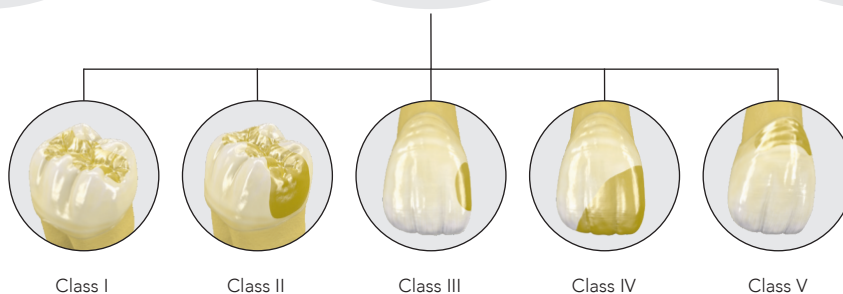
Because **G-ænial® Universal Injectable** doesn't slump or string, you have total control to adapt, shape and contour as you inject for fast, effortless restorations. It adapts perfectly to the cavity floor and allows you to easily build contours, cusps and even proximal walls.



Unsurpassed
polishability
with beautiful
aesthetics

Universal
application
for all cavity
classes

Faster
placement
time with
no wastage

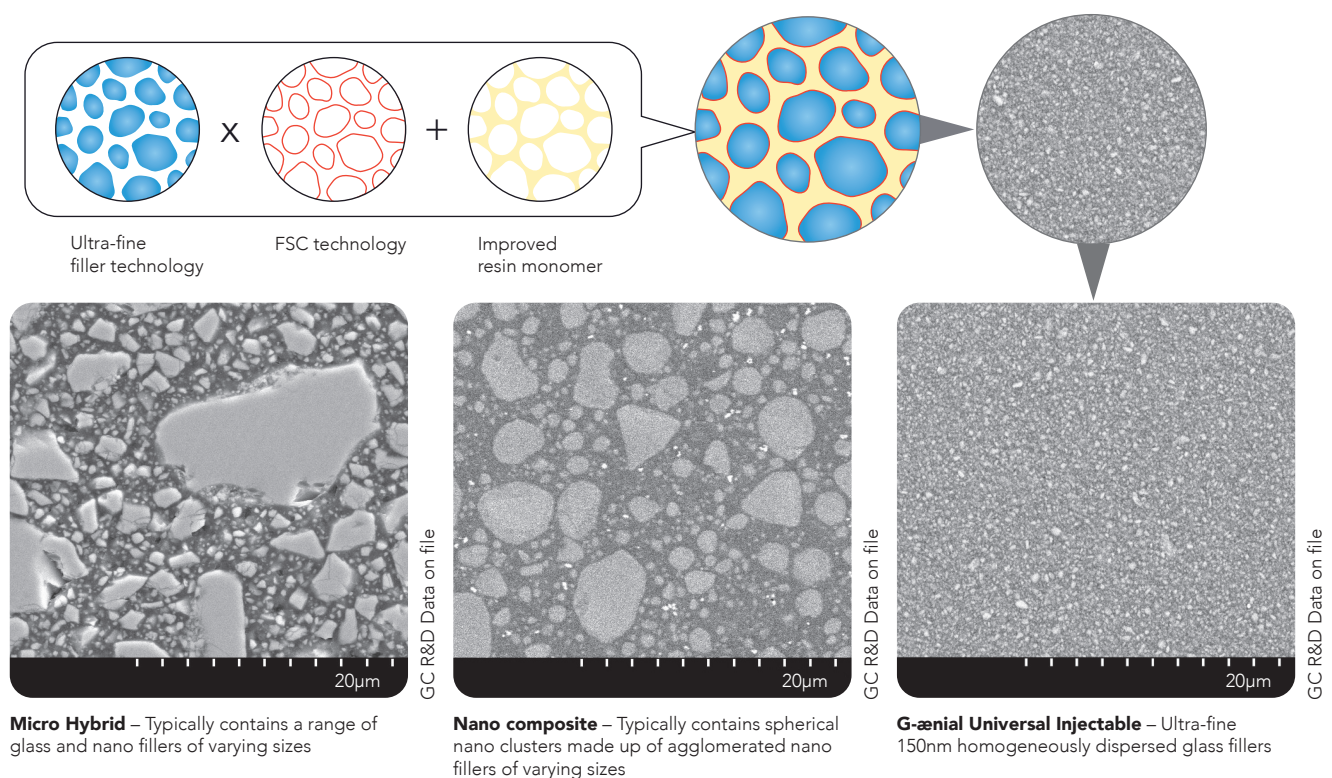


*based on ISO 4049 testing

World-leading innovation and technology

Our latest full-coverage silane coating (FSC) technology makes it possible to homogeneously and densely disperse ultra-fine 150nm fillers in the improved resin monomer matrix giving unparalleled strength, durability and energy-absorbing resilience with high radiopacity – 252% AI.

3 in 1 Technologies Ultra-fine fillers + Full silane coating + Improved resin monomer



Innovative syringe design delivers with ease and no slumping

With effortless extrusion, our new syringe is a joy to use - and the bendable tips make precise delivery easy.



Superior strength, wear resistance and polish retention

G-ænial® Universal Injectable's high-density structure not only provides exceptional strength, but also greater wear resistance, unmatched high polish retention and high resistance to discoloration for long-lasting aesthetics.

3 in 1 Benefits

Exceptional strength

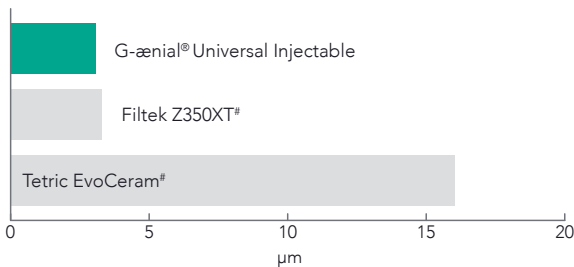


Unsurpassed surface integrity

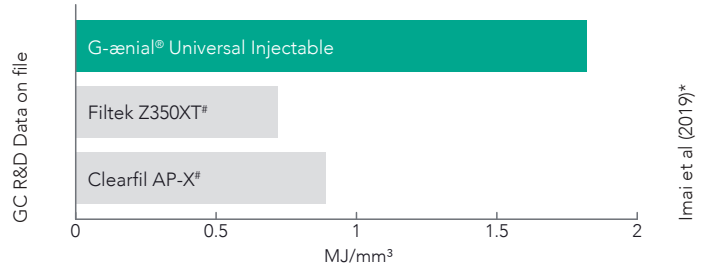


Long lasting aesthetics

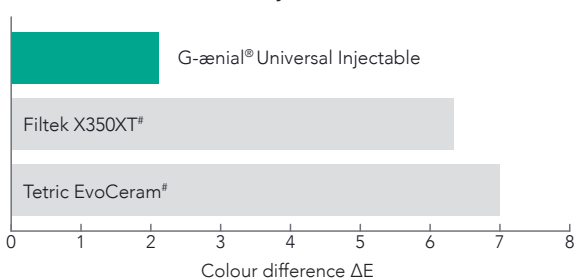
3-body wear



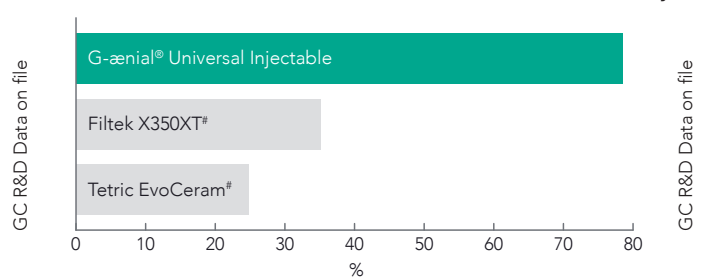
Resilience (Toughness)



Discolouration (at 7 days, 2% coffee solution)



Gloss Retention (After toothbrush wear – 12,000 cycles)



3 in 1 Savings

Less time



No waste



Less stress

Save time, save material, save stress

With far fewer steps than conventional composite, the time savings for restorations are significant. **G-ænial® Universal Injectable** also eliminates wastage. You only use what you need! And because **G-ænial® Universal Injectable** doesn't string or slump the whole process is easier and the end result is less stress in your day.

Conventional pastes



G-ænial® Universal Injectable



Not trademarks of GC Corporation

* Interrelation among the handling, mechanical, and wear properties of the newly developed flowable resin composites. Imai et al. Journal of the Mechanical Behavior of Biomedical Materials 89 (2019) 72–80

Case Studies

Class II restoration

Dr Javier Tapia Guadix, Spain



1. Removal of the old restoration & caries removal.



2. Undercuts can easily be reached thanks to the bendable tips.



3. Building the proximal wall using the enamel shade JE.



4. Removal of the sectional matrix after building the wall.



5. A class I procedure can now be followed; the dentin layer is created with the A4 shade.



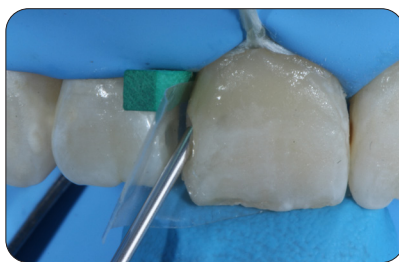
6. Final situation after finishing and polishing of the margins.

Class III restorations

Dr Ahmed Al-Jaff, Iraq



1. Initial Class III cavities.



2. Injecting G-aenial Universal Injectable (A2).



3. Recall situation showing perfect integration.

Management of early worn dentition

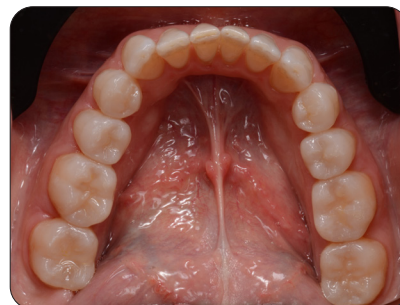
Dr Anthony Mak, Australia



1. Early wear evident on 40-year old patient needing conservative management.



2. Old composite restorations removed and teeth micro-etched. Build up and restorations on the occlusal surface using alternate teeth technique.



3. Final restorations using a single shade injection technique, shade A1.

Injection moulding technique

Dr. Ali Salehi, France



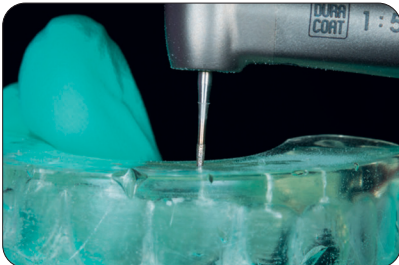
1. Model with wax-up of the desired tooth shape.



2. An impression tray is filled with EXACLEAR.



3. The desired shape is copied. The mould can be easily removed from the impression tray and the model.



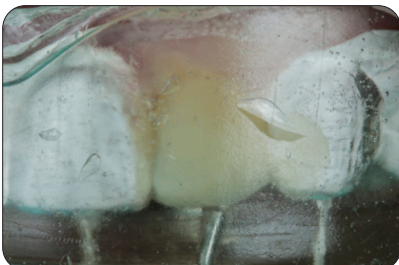
4. Holes are drilled in the EXACLEAR mould through which the composite will be injected.



5. Etching the enamel.



6. Application of the adhesive (G-Premio BOND).



7. Injection of the composite into the mould. This process is repeated for each tooth.



8. Finishing the vestibular and palatal margins.



9. Finishing the approximal margins.



10. Polishing the composite restorations.



11. Result after polishing.



12. Smile after treatment.

G-ænial® Universal Injectable

Ordering information

Syringe

1 mL (1.7g)

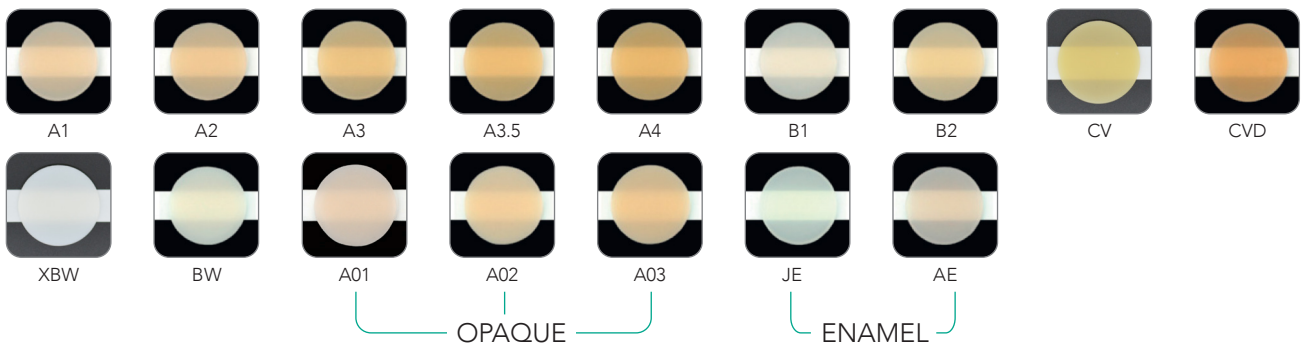
0138F119-0010
0138F119-0020
0138F119-0030
0138F119-0040
0138F119-0050
0138F119-0060
0138F119-0070
0138F119-0130
0138F119-0140
0138F119-0100
0138F119-0110
0138F119-0120
0138F119-0160
0138F119-0150
0138F119-0080
0138F119-0090

Refill

GC G-ænial® Universal Injectable, A1
GC G-ænial® Universal Injectable, A2
GC G-ænial® Universal Injectable, A3
GC G-ænial® Universal Injectable, A3.5
GC G-ænial® Universal Injectable, A4
GC G-ænial® Universal Injectable, B1
GC G-ænial® Universal Injectable, B2
GC G-ænial® Universal Injectable, JE
GC G-ænial® Universal Injectable, AE
GC G-ænial® Universal Injectable, AO1
GC G-ænial® Universal Injectable, AO2
GC G-ænial® Universal Injectable, AO3
GC G-ænial® Universal Injectable, BW
GC G-ænial® Universal Injectable, XBW
GC G-ænial® Universal Injectable, CV
GC G-ænial® Universal Injectable, CVD

Category

Standard
Standard
Standard
Standard
Standard
Standard
Standard
Enamel
Enamel
Opaque
Opaque
Opaque
Bleach
Bleach
Cervical
Cervical



DA DENTAL ADVISOR
Product insights you can trust.

"This material adapts beautifully and it retains cusp form without slumping"

"I was surprised at how well it flowed into deep restorations"

"Cuts restoration time very significantly and drastically reduces finishing time"

GC ASIA DENTAL PTE LTD

5 Tampines Central 1,
Tampines Plaza 2, #06-01
Singapore 529541
Tel. +65 6546 7588
gcasia@gc.dental
www.gc.dental/sea

