

G-CEM LinkForce™



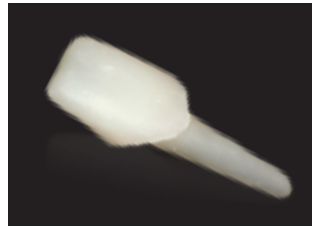
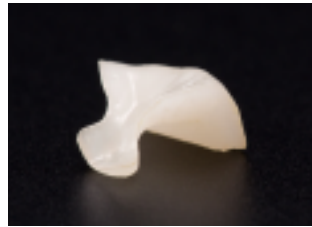
./GCE./

One universal system,

Introducing G-CEM LinkForce™

Now you can secure all your indirect restorations with one aesthetic resin cement solution.

- **Universal indications**
- **Uncompromising strength and adhesion**
- **Fast and easy application**
- **Aesthetic and durable margins**
- **Consistent quality and performance**



three strong links

LINK 1

G-Multi PRIMER



LINK 2

G-Premio BOND



LINK 3

G-CEM LinkForce™



LINK 1: G-Multi PRIMER

One primer for all substrates

G-Multi PRIMER uses three different chemical bonding agents to ensure perfect adhesion in all situations to all substrates. By adding silane to the primer (and not to the dentine adhesive), stability of adhesion is assured.



Case study

CERASMART™ hybrid ceramic bonded with G-CEM LinkForce™. Dr Anthony Mak.

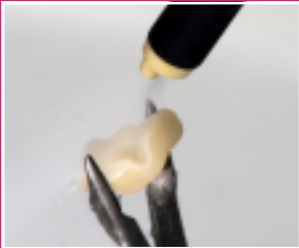
LINK 1: G-Multi PRIMER to the prepared indirect restoration



After trial fit, the CERASMART™ onlay is cleaned



Pre-treat with 5% HF (Hydrofluoric acid) for 60 secs



Clean with water and dry



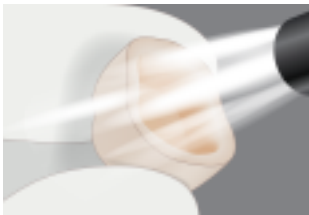
Apply a thin layer of G-Multi PRIMER to create a durable chemical bond. Dry with an air syringe

Simple application

- Same procedure for all substrates, no confusion

Stabilised formulation

- No refrigeration
- 2 year shelf life



Apply and air dry, no waiting

LINK 2: G-Premio BOND

A premium chemical bonding formulation

Featuring three functional monomers in a proven formulation, G-Premio BOND delivers a no compromise adhesive performance to all prepared tooth surfaces including liners and composite or metal cores.



Case study

CERASMART™ hybrid ceramic bonded with G-CEM LinkForce™. Dr Anthony Mak.

LINK 2: Dual cure mode – G-Premio BOND mixed with Dual Cure Activator applied to the prepared tooth



Selective etch of enamel, rinse and dry



Dual cure mode was selected. 1 drop each of G-Premio BOND and Dual Cure Activator were dispensed and mixed



The mixed bond was applied to the prepared enamel, dentine and composite liner and left for 20 secs



The surface was then dried with maximum air pressure for 5 secs to remove all water from the bond layer

Light cure mode – G-Premio BOND

A quick and convenient option is to simply apply G-Premio BOND and light cure. This immediately seals the dentine, and the low film thickness of just 3µm ensures that there is no risk of the bond thickness compromising fit.



Apply G-Premio BOND. Wait 10 secs



Dry with MAXIMUM AIR PRESSURE for 5 secs

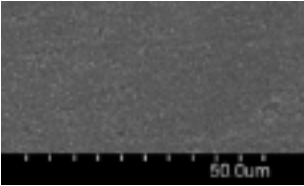


Light cure for 10 secs

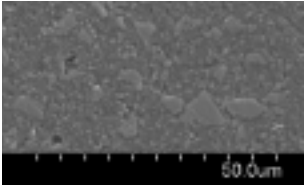
LINK 3: G-CEM LinkForce™

Class leading strength and aesthetics

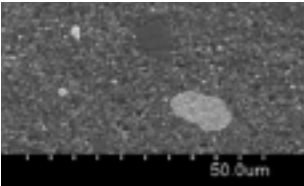
G-CEM LinkForce™ provides durable retention and long term margin aesthetics through enhanced dual cure polymerisation systems and incorporation of high density, single dispersion glass filler technology.



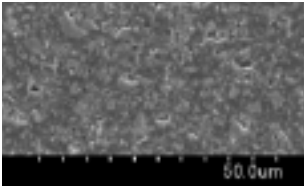
G-CEM LinkForce™



RelyX Ultimate



Multilink Automix



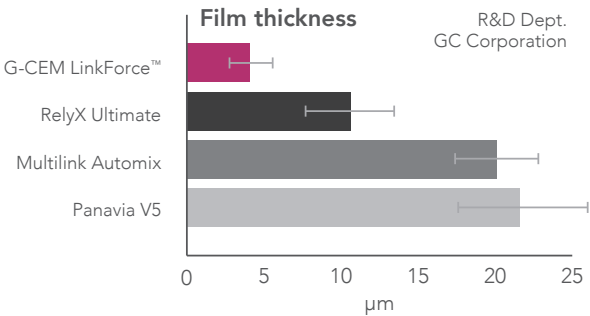
Panavia V5

Source: R&D Dept. GC Corporation



Very low film thickness

- Just 4µm
- Guaranteed adaptation



Consistent handling and clean up

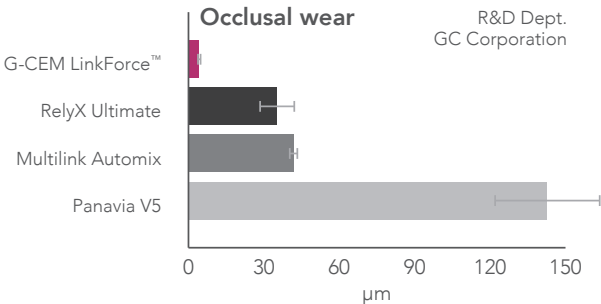
The extruded excess G-CEM LinkForce™ has minimal slump, so after 1-2 secs tack curing, excess cement is simple to remove, breaking cleanly from the margins.



Dr Yoshikazu Kawamoto

High strength and wear resistance

- High density, single dispersion glass fillers
- Excellent polish
- Less chance of plaque retention



Case study

CERASMART™ hybrid ceramic bonded with G-CEM LinkForce™. Dr Anthony Mak.

LINK 3: G-CEM LinkForce™



G-CEM LinkForce™ is applied to the internal surface of the CERASMART™ onlay



After seating, light cure for 1–2 secs. Excess is removed



Apply air barrier (optional) and light cure all surfaces



CERASMART™ onlay bonded with G-CEM LinkForce™

Consistency in aesthetics

Available in a range of 4 shades, with tooth-like fluorescence, convenient automix delivery and matching Try-In Pastes. When bonding veneers, or for more aesthetically demanding applications, there is a clear path to follow for shade checking and achieving predictable aesthetic outcomes.

Translucent
(clear translucent)
Perfect for very thin restorations to preserve the original shade



A2
(A2 translucent)
The standard for luting most of your prostheses



Opaque
(universal opaque)
Used to mask discoloured substrates when needed



Bleach
(bleach opaque)
Adapted for ultra white restorations to increase opacity and value



Strong. Dependable. Universal.



G-CEM LinkForce™ is a dual cure adhesive resin cement solution built on **three strong links** that ensure uncompromising, consistent and reliable adhesion.

G-CEM LinkForce™ Starter Kit

- 1 x G-CEM LinkForce™ A2 OR Translucent 8.7g (5mL)
- 20 x GC Automix Tip Regular
- 1 x G-Multi PRIMER (5mL)
- 1 x G-Premio BOND (5mL)

Refills

- G-CEM LinkForce™ 8.7g (5mL)
(Translucent / A2 / Opaque / Bleach)
- G-CEM LinkForce™ Try-In Paste 1.5g (1.2mL)
(Translucent / A2 / Opaque / Bleach)
- G-Premio BOND, 5mL
- G-Premio BOND DCA, 3mL
- G-Multi-PRIMER, 5mL



GC Asia Dental Pte Ltd
11 Tampines Concourse #03-05
Singapore 528729

T: +65 6546 7588
F: +65 6546 7577
sea.gcasiadental.com