

# *initial*™ IQ ONE SQIN

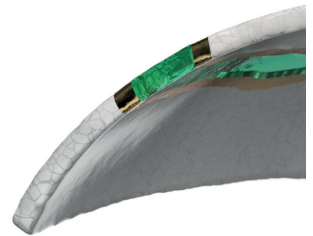
Paintable  
colour-and-form  
ceramic system



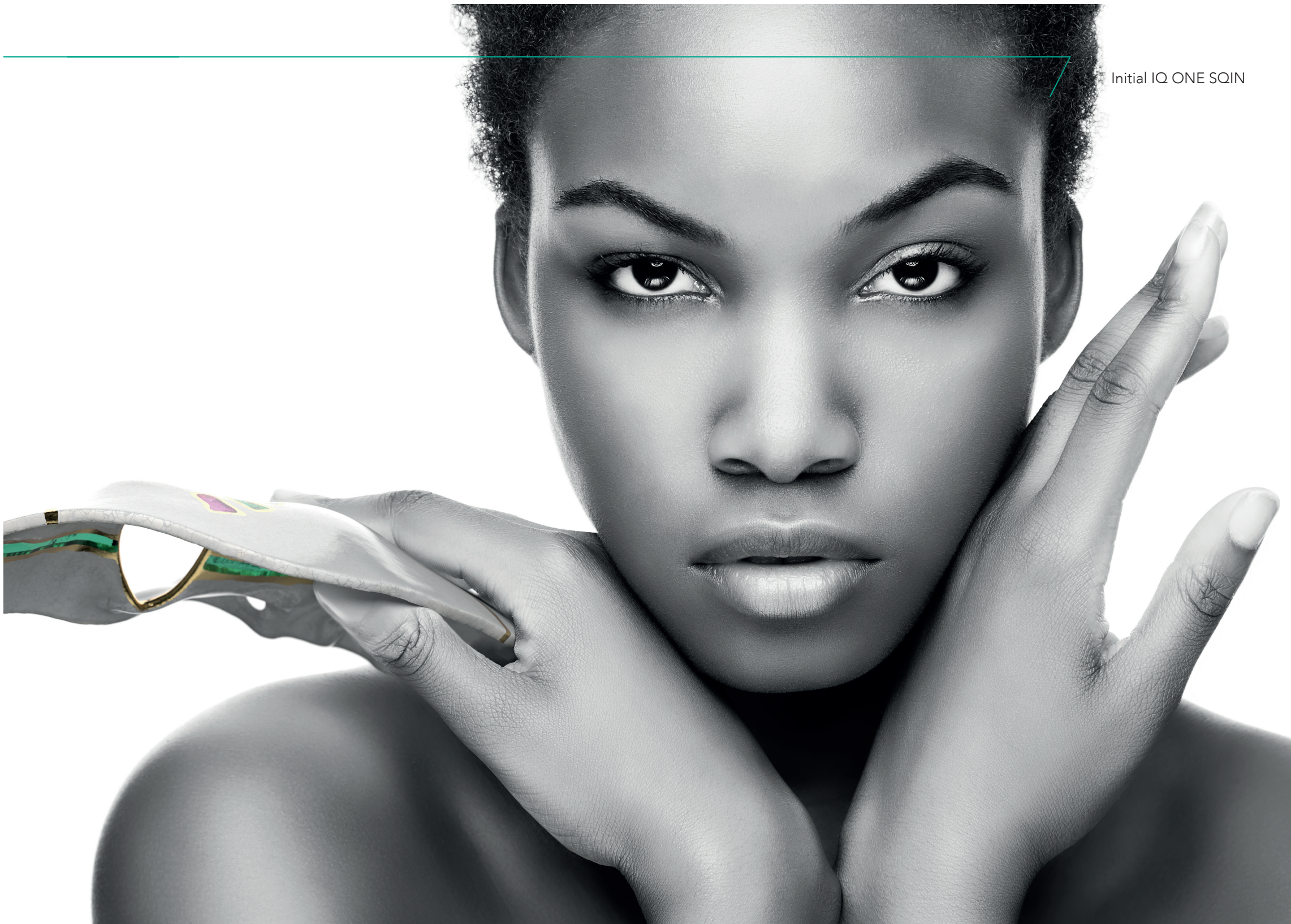
# 90 % of all teeth are ordered in a key shade...

For some time now, it has been possible to make posterior restorations from a single material such as lithium disilicate or zirconia, which are sufficiently aesthetic without laborious layering techniques. Monolithic work is increasing.

With **GC Initial IQ ONE SQIN** – the paintable colour-and-form ceramic system – aesthetically appealing restorations suitable for the anterior region, can be achieved in the same simple way. Based on the GC Initial «IQ philosophy», the system consists of different ceramic materials that are perfectly adapted to be used together assuring an efficient and aesthetically convincing finalization of monolithic and buccally reduced restorations.



Initial IQ ONE SQIN



## Initial IQ Lustre Pastes ONE

The most versatile paintable ceramic for external staining as well as internal characterization of substructures. When used with SQIN, it also serves as the connection firing.

- ✓ Ready-to-use consistency
- ✓ Inherent fluorescence
- ✓ 3D colour deepness

## Initial IQ SQIN

Completes the final contour of your restorations offering vitality, texture and natural gloss.

- ✓ Easy form and texture
- ✓ Self-glazing effect
- ✓ 3D surface structure



## Initial Spectrum Stains

Fine powder stains for extra individual effects.

- ✓ Infinite colour nuances
- ✓ Can be mixed with Lustre Pastes ONE or SQIN

With GC Initial IQ ONE SQIN – the paintable colour-and-form ceramic system – you can quickly and easily achieve high aesthetic results, comparable to conventionally layered restorations but with a significant time gain.



# How does it work? You choose...

## Micro-layering technique (micro-buccally reduced monolithics)

GC Initial IQ Lustre Pastes ONE are used as a colour and individualization layer assuring a perfect connection firing before application of the SQIN powders. In the micro-layering technique, SQIN is easily applied in a layer thickness of 0.1 – 0.6 mm over the painted and fired Lustre Pastes ONE surface. Thanks to the refined mixture of feldspar-based glasses, a lifelike 3D-effect is created, resulting in colour deepness and lifelike translucency.

Mixed with the Form and Texture liquid, the SQIN powders become a highly compact and dense ceramic slurry. Their unique application and modelling properties will facilitate individual surface texturing with self-glazing properties after ceramic firing.

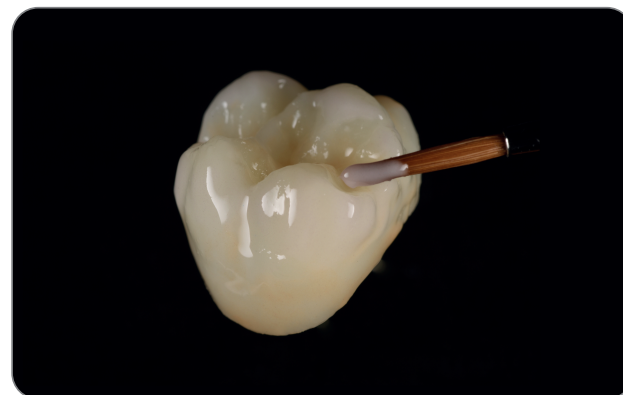
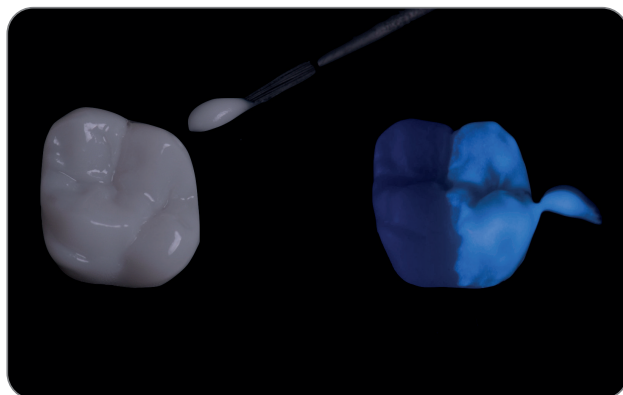


# ...what you paint is what you get!

## Painting technique (monolithics)

Available in a ready-to-use consistency, the GC Initial IQ Lustre Pastes ONE feldspar-based 3D paint-on ceramic adds colour deepness and lifelike translucency with a very natural glaze to your monolithic restorations.

The pastes can be applied in a thicker layer guaranteeing unsurpassed vitality and a very natural glaze. With their inherent fluorescence, they are fine-tuned to boost the fluorescence of your monolithic restorations, especially when using the Lustre Pastes ONE Neutral FLUO (L-NFL).

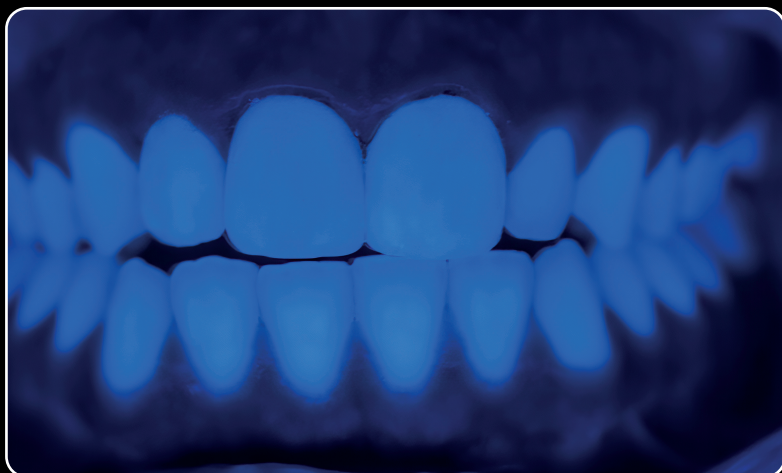




Aesthetic



# Beauty within



Natural fluorescence



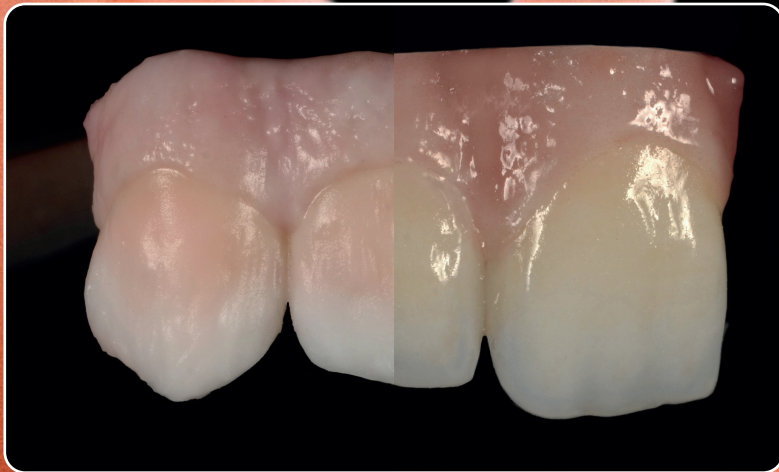
Red and white aesthetics



Maximal aesthetics within a micro-layer



# Easy and time-saving



Create form and fine texture in the wet stage.  
No changes after firing.



Initial IQ Lustre Pastes ONE also serve as connection firing.

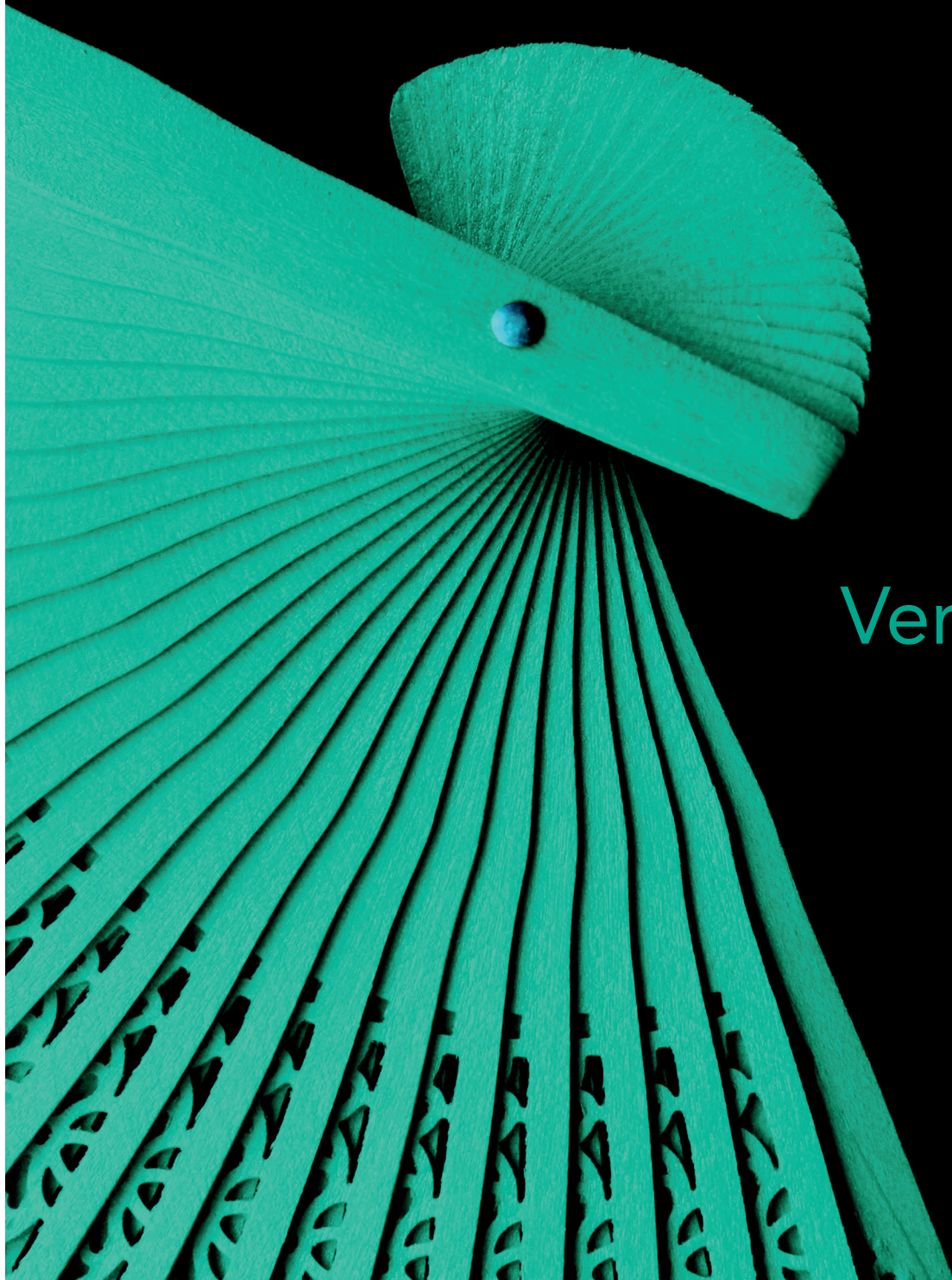


Self-glazing properties.  
Get a beautiful glazed finish in one single firing.

A close-up, artistic photograph of an hourglass. The sand is a vibrant teal color and is captured in motion, falling from the upper bulb into the lower bulb. The lighting is dramatic, highlighting the texture of the sand and the glass of the hourglass against a dark background. The overall mood is one of precision and time.

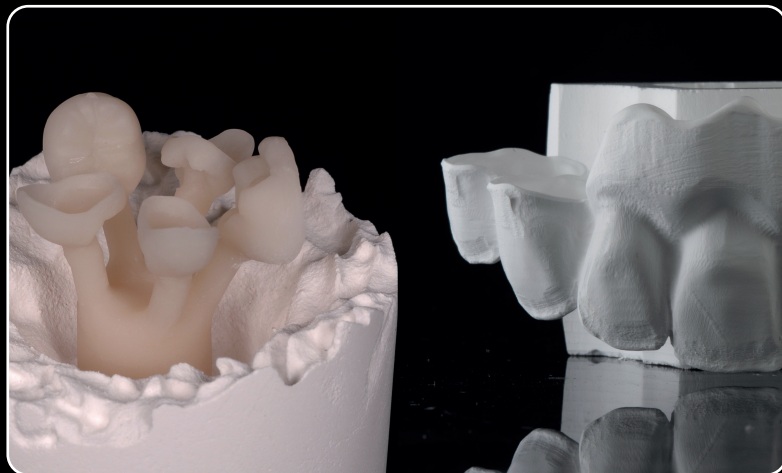
Initial IQ ONE SQIN

Practical



Versatile

# One system...



...for all your Zr and LDS full ceramic realizations



...for micro-layering as well as painting techniques



...for anterior and posterior restorations





## GC Initial IQ ONE SQIN SYSTEM SET

- 10x SPS Stain (SPS-1 / 2 / 7 / 8 / 13 / 14 / 17 / 18 / 19 / 20), 3g
- 1x SPS Glaze Fluo (GL-FLUO), 10g
- 1x SPS Glaze Liquid, 25ml
- 2x IQ LP ONE Lustre Paste Neutral (L-N / L-NFL), 4g
- 4x IQ LP ONE Lustre Body Shade (L-A / B / C / D), 4g
- 6x IQ LP ONE Enamel Effect Shade (L-3 / 6 / 8 / 9 / 10 / OP), 4g
- 1x IQ LP ONE/NF Diluting Liquid, 8ml
- 1x IQ LP ONE/NF Refresh Liquid, 8ml
- 5x IQ SQIN Powder Dentin (Body A / B / C / D / BL-D), 10g
- 5x IQ SQIN Powder Enamel (E-57 / 58 / 59 / 60 / BL-E), 10g
- 1x IQ SQIN Powder Translucent Opal Booster (TO), 10g
- 3x IQ SQIN Powder GUM (light, dark, neutral), 10g
- 1x IQ SQIN Form & Texture Liquid, 25ml
- 1x IQ LP ONE Mixing Dish
- 1x IQ LP ONE Brush 00
- 1x IQ LP ONE Brush 2
- 1x IQ LP ONE Plastic Cover
- 1x IQ ONE SQIN Technical Manual
- 1x IQ LP ONE Colour Chart
- 1x SPS Colour Chart



## GC Initial IQ SQIN SHADES SET

- 5x IQ SQIN Powder Dentin (Body A / B / C / D / BL-D), 10g
- 5x IQ SQIN Powder Enamel (E-57 / 58 / 59 / 60 / BL-E), 10g
- 1x IQ SQIN Powder Translucent Opal Booster (TO), 10g
- 3x IQ SQIN Powder GUM (light, dark, neutral), 10g
- 1x IQ SQIN Form & Texture Liquid, 25ml
- 1x IQ SQIN Technical Manual



## GC Initial IQ Lustre Pastes ONE - V-SHADES SET

- 2x IQ LP ONE Lustre Paste Neutral (L-N / L-NFL), 4g
- 4x IO LP ONE Lustre Body Shade (L-A / B / C / D), 4g
- 10x IQ LP ONE Enamel Effect Shade (L-1 / L-2 / L-3 / L-4 / L-5 / L-6 / L-7 / L-8 / L-9 / L-10), 4g
- 1x IQ LP ONE Enamel Effect Opal (L-OP), 4g
- 1x IQ LP ONE Enamel Effect Value (L-V), 4g
- 1x IQ LP ONE/NF Diluting Liquid, 8ml
- 1x IQ LP ONE/NF Refreshing Liquid, 8ml
- 1x IQ LP ONE Mixing dish
- 1x IQ LP ONE Brush 00
- 1x IQ LP ONE Brush 2
- 1x IQ LP ONE Colour Chart
- 1x IQ LP ONE Technical Manual

# ONE SQIN technique – for all your zirconia and lithium disilicate restorations

- ✓ Create form and fine texture details in the wet stage – No changes after firing.
- ✓ Self-glazing properties – Get a beautiful glazed finish in one single firing.
- ✓ Optimal fluorescence level – Ensures the look of natural teeth under all light circumstances.
- ✓ Maximal aesthetics within a micro-layer.



Photo courtesy:  
ZTM Michael Brüschi (Germany): p7 (middle and right image); p9 (middle right and bottom right image); p13 (left side of middle left, upper right and right side of bottom right image)  
MDT Leonardo Cavallo (Italy): p7 (left image); p9 (upper left image)  
MDT Patric Freudenthal (Sweden): p13 (right side of middle left image)  
ZTM Stefan Roozen (Austria): p6 and p10; p13 (left side of bottom right image)

---

*initial*<sup>TM</sup> IQ ONE SQIN

---



**GC ASIA DENTAL PTE LTD**

5 Tampines Central 1,  
Tampines Plaza 2, #06-01  
Singapore 529541  
Tel. +65 6546 7588  
gcasia@gc.dental  
<https://www.gc.dental/sea>

z L L F EN 7 80 05/21