



Apply, shape,  
smooth,  
enjoy!

Direct  
Composite  
application just  
got easier  
with GC Modeling Liquid



Since 1921  
100 years of Quality in Dental

# Simplify your composite work using GC Modeling Liquid with your brush or instruments

With the right tools, a smooth and well-sculpted direct composite restoration is achievable, resulting in a nice aesthetic outcome.

Using GC Modeling Liquid and a brush to adapt composites is a true game changer.



Quick & easy application and shaping

Using a **brush wetted with GC Modeling Liquid** results in a **quick and easy application and shaping** of composites.



A smooth finish for a shorter finishing procedure

Adapting the final layer of composite using a wetted brush aids in achieving a **smoother** surface and it **simplifies the finishing procedure**.



Invisible for great aesthetic results

GC Modeling Liquid becomes **fully transparent after light-curing** — giving **nice aesthetic results**.



The brush technique works well with **GC Modeling Liquid** as a wetting resin.

- **Low viscosity** for ease of use
- **Completely invisible** after light-curing
- **Simple & quick application**
- **350 drops** per bottle
- Compatible with **all direct composites**
- Storage at **room temperature**



# Apply, shape, smooth, enjoy!



Dispense one drop of GC Modeling Liquid on a pad.



Protect it from the light with a cover.



Touch the drop with the brush or instrument in order to moisten it.



Remove the excess thoroughly using a gauze swab.



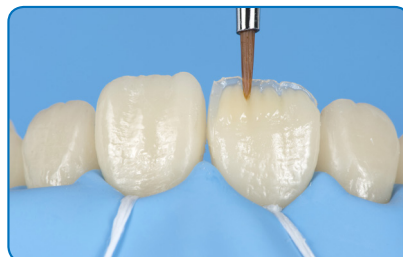
Use your instrument or brush to apply the composite.



Use the flat brush to adapt and shape the composite.



Contouring and removal of excess composite using your instrument.



Model the dentin mamelons using a round brush.



Shape and smoothen the final layer of composite using a wetted flat brush or instrument.

## Also great for posterior cases

A round brush helps to build the cusps and refine the design of the fissures.



Apply the composite using your wetted instrument.



The brush can be used to adapt the material cusp by cusp.



GC Modeling Liquid and the brush aide to recreate the fissures and refine anatomy.

Get ready for **easy composite application**  
with GC Modeling Liquid & Composite manipulation brushes



GC Modeling Liquid, Refill 6mL

Discover **great handling and aesthetics**  
with GC paste composites



G-aenial A'CHORD®



G-aenial® Anterior / Posterior



Since 1921  
100 years of Quality in Dental.

GC Asia Dental Pte Ltd  
5 Tampines Central 1, Tampines Plaza 2  
#06-01, Singapore 529541

E: [gcasia@gc.dental](mailto:gcasia@gc.dental)  
[www.gc.dental/sea](http://www.gc.dental/sea)